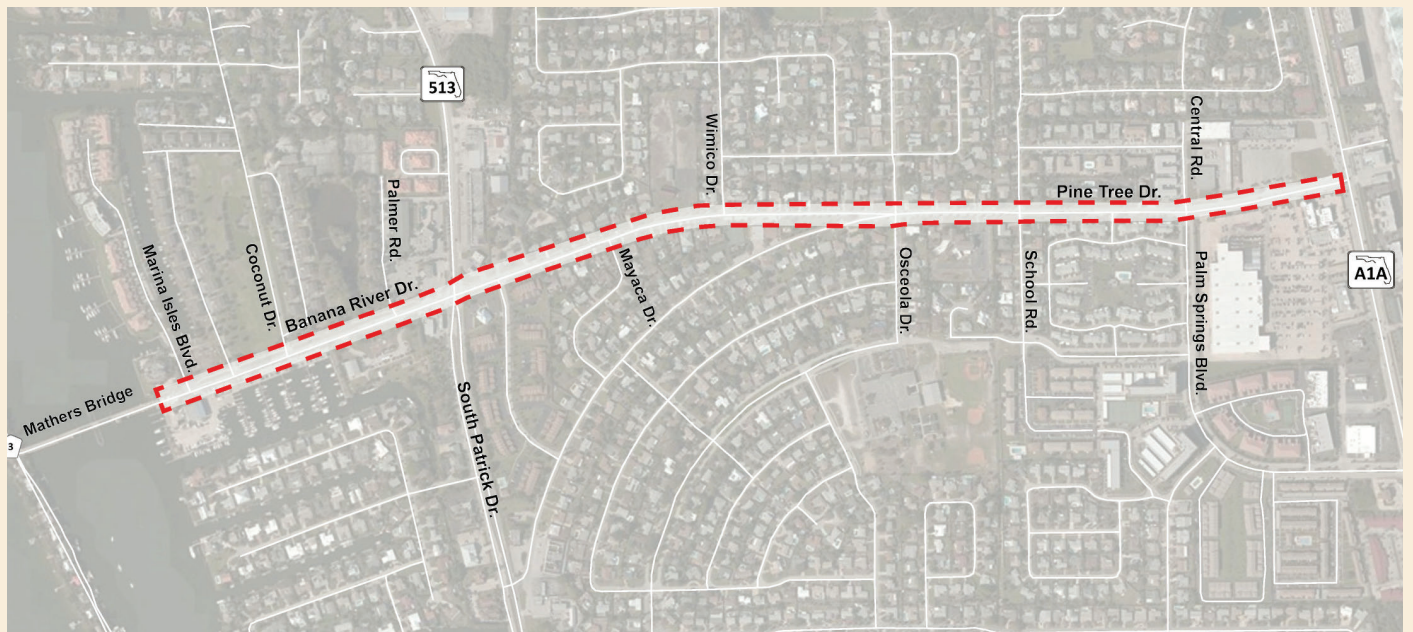




# INDIAN HARBOUR BEACH Florida

## BANANA RIVER/PINE TREE DRIVE COMPLETE STREETS STUDY

## PROJECT FACT SHEET



### PROJECT DESCRIPTION

The Banana River/Pine Tree Drive Complete Streets Study is looking at how to incorporate enhanced multi-modal solutions to improve pedestrian and bicycle movement along the corridor. The study is focused on the segment from Mathers Bridge on the west end to SR A1A on the east.

### NEXT STEPS

- Identify preferred improvements
- Develop cost estimates
- Present recommendations

#### Visit the study webpage at:

<http://spacecoasttpo.com/projects-and-studies/sct-po-corridor-studies/banana-river-pine-tree-drive-complete-street-feasibility-study/>

### TO FIND OUT MORE ABOUT THE STUDY CONTACT:

Laura Carter  
SCTPO Project Manager  
Phone: (321) 690-6890  
Email: [laura.carter@brevardfl.gov](mailto:laura.carter@brevardfl.gov)



Space Coast TPO  
2725 Judge Fran Jamieson Way  
Viera, FL 32940  
Phone: 321-690-6890  
E-Mail: [tpostaff@brevardfl.gov](mailto:tpostaff@brevardfl.gov)  
[www.sctpo.com](http://www.sctpo.com)

Public participation is solicited without regard to race, color, national origin, age, sex religion, disability or family status. Persons wishing to express their concerns relative to compliance with Title VI may do so by contacting Abby Hemenway, Title VI Coordinator, at 321-690-6890 or [abby.hemenway@brevardfl.gov](mailto:abby.hemenway@brevardfl.gov).