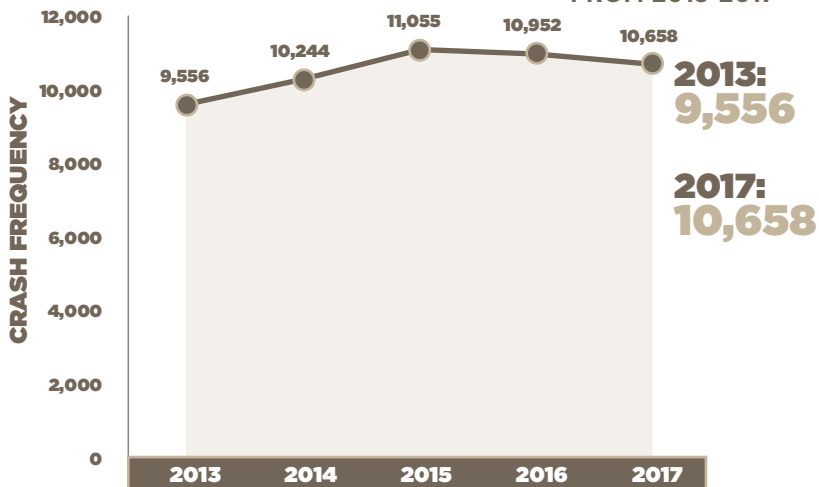


2017 STATE OF THE SYSTEM SAFETY STATISTICS



COUNTYWIDE NUMBER OF CRASHES ▲ **10.3%** INCREASE FROM 2013-2017



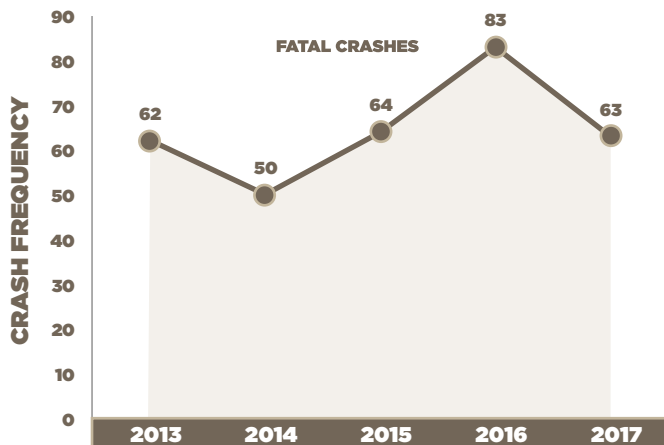
ABOUT

The Space Coast Transportation Planning Organization (TPO) annually evaluates the state of Brevard's transportation system. The results are summarized in the State of the System (SOS) report. The SOS considers usage and performance trends of various transportation modes -- highways, transit, seaport, airport and space. This summary highlights a few of the safety metrics reviewed as part of the SOS safety analysis: number of Countywide crashes, intersection and corridor crashes, fatal crashes, vulnerable road user crashes, lane departure crashes, impaired driving crashes, and distracted driving crashes.

FATAL CRASHES



▲ **1.6%** INCREASE FROM 2013-2017



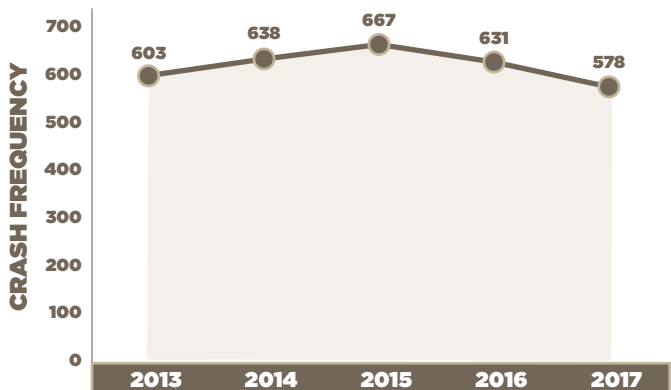
VULNERABLE ROAD USERS



▼ **4.1%** DECREASE FROM 2013-2017

PEDESTRIAN BICYCLE MOTORCYCLE

VULNERABLE ROAD USER CRASHES

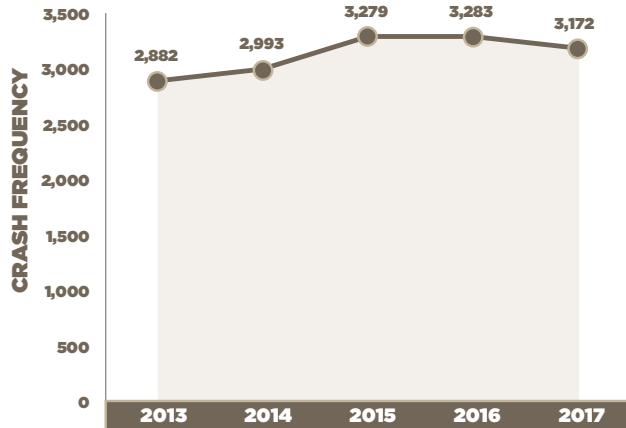


INTERSECTION CRASHES



2013: 2,882
2017: 3,172

10.1%
INCREASE
FROM 2013-2017

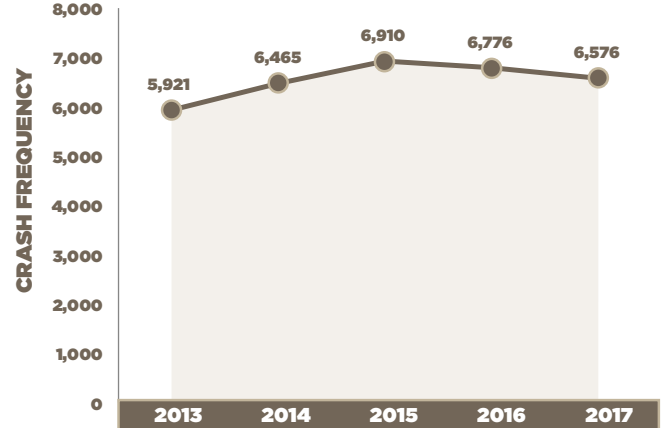


CORRIDOR CRASHES



2013: 5,921
2017: 6,576

11.1%
INCREASE
FROM 2013-2017

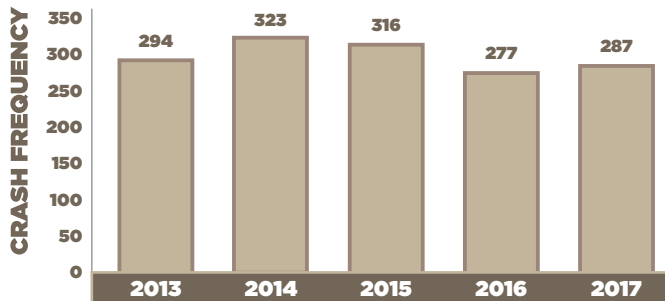


IMPAIRED DRIVING CRASHES



2013: 294
2017: 287

2.4%
DECREASE
FROM 2013-2017

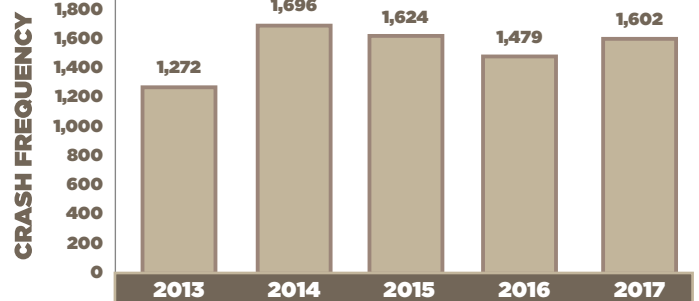


DISTRACTED DRIVING CRASHES



2013: 1,272
2017: 1,602

25.9%
INCREASE
FROM 2013-2017



HIGH CRASH INTERSECTIONS

Street 1	Street 2	Number of Crashes
Babcock Street	Palm Bay Road	77
Eau Gallie Boulevard	US 1	54
Minton Road	Emerson Drive	53
Wickham Road	Sarno Road	52
Babcock Street	Malabar Road	51
Wickham Road	US 192	49
Malabar Road	San Filippo Drive	48
SR 520	S Courtenay Parkway	46
Lake Washington Road	Wickham Road	46
S. Patrick Drive	Eau Gallie Boulevard	44

HIGH CRASH CORRIDORS

Corridor	From	To	Number of Crashes
US 192	Wickham Road	Babcock Street	199
N Courtenay Parkway	SR 520	SR 528	179
Babcock Street	Palm Bay Road	US 192	155
SR A1A	Cocoa Isles Boulevard	SR 520	145
Wickham Road	Sarno Road	Parkway Drive	133
Babcock Street	Malabar Road	Palm Bay Road	132
US 1	Sarno Road	Pineda Causeway	128
Palm Bay Road	Minton Road	Hollywood Boulevard	126
US 1	Strawbridge Avenue	Sarno Road	124
US 1	SR 528	SR 405	120

For more information, please contact the Space Coast Transportation Planning Organization:

2725 Judge Fran Jamieson Way
Building B, Room 105, MS #82
Melbourne, FL 32940

321.690.6890
tpostaff@spacecoasttpo.com
www.spacecoasttpo.com



VIEW THE COMPLETE REPORT ONLINE AT WWW.SPACECOASTTPO.COM