



# 2017 STATE OF THE SYSTEM



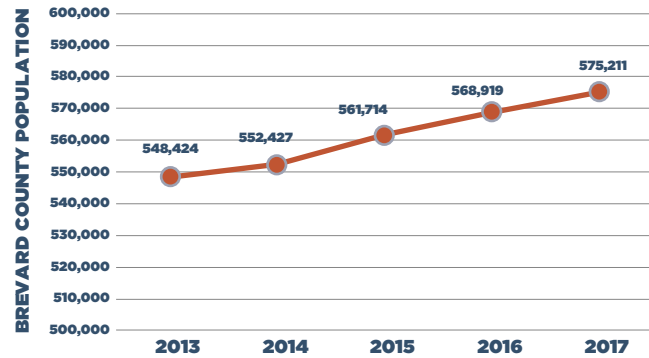
## ABOUT

The Space Coast Transportation Planning Organization (TPO) annually evaluates the state of Brevard's transportation system. The results are summarized in the State of the System (SOS) report. The SOS considers usage and performance trends of various transportation modes -- highways, transit, seaport, airport and space. Safety, mobility and congestion levels are monitored. Long term trends and possible problem locations are identified. Thus, the SOS provides technical guidance to the TPO on where and how state and federal dollars can be programmed to enhance Brevard's transportation system.

## POPULATION OVERALL GROWTH

**4.9% INCREASE**

**2013: 548,424**  
**2017: 575,211**



## TRAFFIC VOLUMES

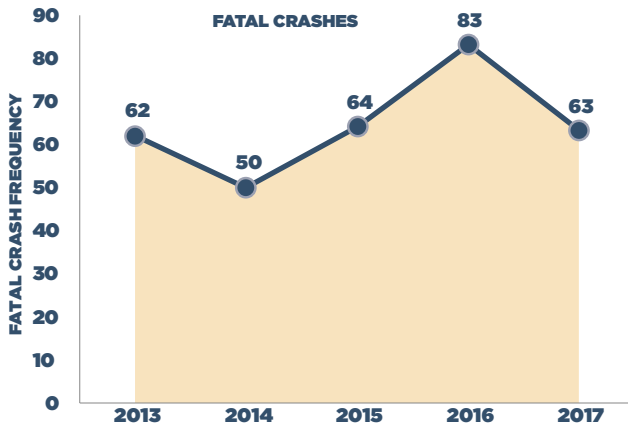
**11.2% INCREASE FROM 2013-2017**



## CRASH TRENDS

### FATAL CRASHES

**1.6% INCREASE FROM 2013-2017**

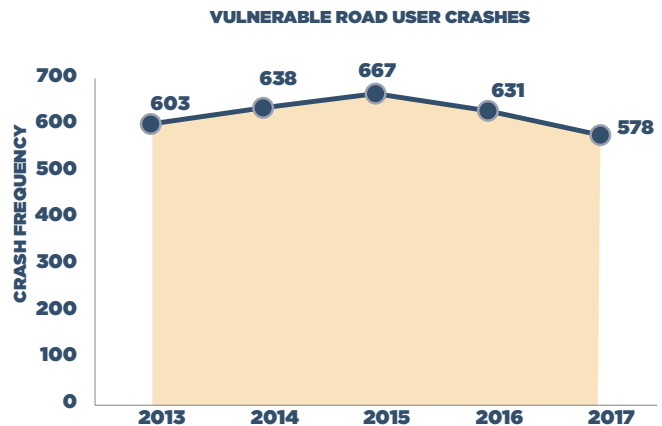


### VULNERABLE ROAD USERS



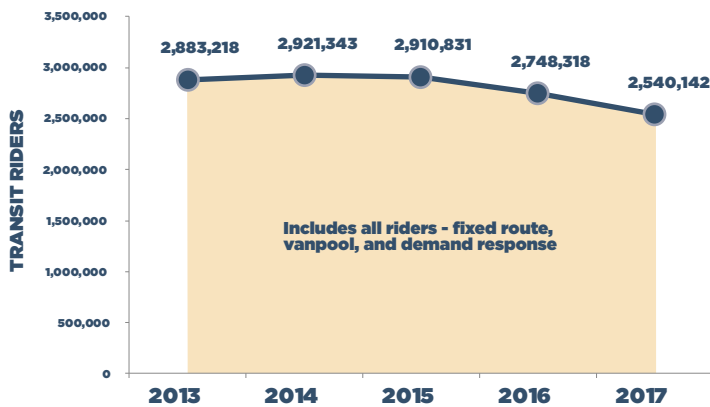
PEDESTRIAN BICYCLE MOTORCYCLE

**4.1% DECREASE FROM 2013-2017**



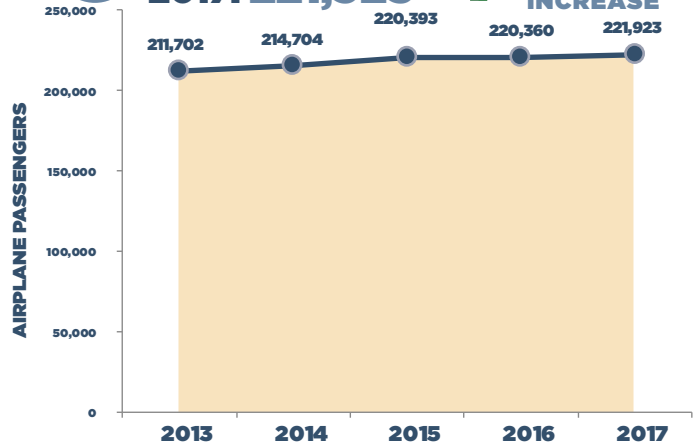
## SPACE COAST AREA TRANSIT RIDERS PER YEAR

2013: 2,883,218  
2017: 2,540,142 **11.9% DECREASE**



## ORLANDO MELBOURNE INTERNATIONAL AIRPORT PASSENGERS

2013: 211,702  
2017: 221,923 **4.8% INCREASE**



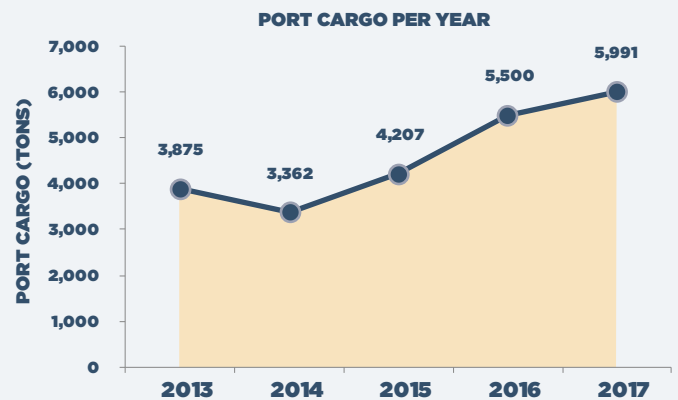
## CRUISE PASSENGERS (MILLIONS)

2013: 3.7  
2017: 4.2 **14.1% INCREASE**

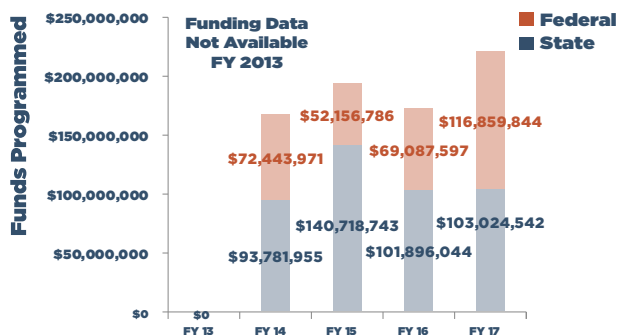


## PORT CARGO (TONS)

2013: 3,875  
2017: 5,991 **54.6% INCREASE**



## FEDERAL AND STATE FUNDS PROGRAMMED



## SPACE MISSIONS PER YEAR

2013: 10  
2017: 19  
2022: 67



**670% INCREASE ANTICIPATED**

For more information, please contact the Space Coast Transportation Planning Organization:

2725 Judge Fran Jamieson Way  
Building B, Room 105, MS #82  
Melbourne, FL 32940

321.690.6890  
tpostaff@spacecoasttpo.com  
www.spacecoasttpo.com



VIEW THE COMPLETE REPORT ONLINE AT [WWW.SPACECOASTTPO.COM](http://WWW.SPACECOASTTPO.COM)