

BREVARD COUNTY TRANSIT SERVICES

TRANSIT ASSET MANAGEMENT PLAN

2020 UPDATE



Brevard County Transit Services
d/b/a Space Coast Area Transit
401 South Varr Ave
Cocoa FL 32922
321-635-7815
November 1, 2020

Contents

Accountable Executive Statement 3

Introduction 5

Policy 6

Asset Management Approach 6

Transit Asset Management (TAM) Plan Elements 7

Performance Targets and Measures..... 7

Federal Transit Administration’s State of Good Repair Performance Measures by Asset Class..... 7

Performance Measures of Vehicles 8

Performance Measures for Facilities and Equipment..... 8

Attachment A – Capital Asset Inventory 9

Attachment B – Condition Assessment of Capital Assets 23

Attachment C – Performance Metric and Target Goals..... 27

Attachment D – Prioritization Projects 31

Appendix A – Organizational Charts 35

Accountable Executive Statement

Brevard County Transit Services Department, dba Space Coast Area Transit, is the public transportation provider for Brevard County, Florida. It is a department of the Brevard County Board of County Commissioners county government. The elected County Commissioners make decisions and approve policies which the County Manager and departments implement. See the Brevard County and Brevard County Transit Services organizational charts in Appendix A.

I am the Accountable Executive for the compilation and implementation of the Transit Asset Management (TAM) Plan, under the authority of the Board of County Commissioners. This Annual Update is done in conjunction with County Asset Management, the County Facilities Construction Manager, our Maintenance General Manager, Manager of Operations and Maintenance, Vanpool Coordinator, Finance Officer, Manager of Administration, and Executive Administrative Assistant. We have carefully catalogued all of our rolling stock, set useful life benchmarks for Brevard County Transit Services vehicles, evaluated the state of good repair, set target goals and projected realistic replacement schedules. We also carefully catalogued all of our facilities and TAM Plan eligible equipment. We did condition assessments, set target goals and prioritized repair and replacement of facilities and equipment where needed.

Brevard County Transit Services made measurable progress toward our Asset targets this year. We retired 4 Fixed Route Buses, 4 Cutaway Paratransit Buses, 1 Volunteers in Motion Van, and 4 Non-Revenue Service Vehicles that were past their Useful Life Benchmark. We reduced 6 Agency Vanpool Vans and 13 Commuter Vanpool Vans that were past their Useful Life.

In their place we added 2 new 35' Gillig Trolleys, 3 Turtle Top Ford E-450 and 4 Turtle Top Freightliner Cutaway Buses, and 4 lower mileage and newer Non-Revenue Service Vehicles from the vanpool fleet. As to the Agency and Commuter Vanpool fleets, we had too many spare vans, so we downsized the fleet. We started the transition of the Commuter Vanpool Vans to Enterprise owned vehicles with 3 new vans.

The Performance Metric percentage of vehicles that exceeded their Useful Life Benchmark improved nearly across all categories. We expect continued progress next year, with more new buses and vans on order.



Administration Office
401 S. Varr Avenue
Cocoa, FL 32922
Office: 321.635.7815
Fax: 321.633.1905



Facilities and Equipment also showed good progress with some construction projects and improvements completed or in progress. The biggest Facilities project of demolition of the condemned building on King Street adjacent to our Cocoa Terminal, and construction of a new employee parking lot and landscaping was delayed. It is now slated to begin this fiscal year.

The Updated Plan has been submitted to the Space Coast Transportation Planning Organization and upon approval will be submitted to the Florida Department of Transportation.

A handwritten signature in blue ink that reads "Scott Nelson".

Scott Nelson
Transit Director
Brevard County Transit Services
November 1, 2020



RideLine 321.633.1878

321Transit.com

Vanpool 321.952.4562

Introduction

Brevard County Board of County Commissioners operates Fixed Route, Paratransit and Vanpool Services as Brevard County Transit Services. Brevard County is located on the East Central Coast of Florida, and is 72 miles along the Atlantic Ocean and approximately 26.5 miles wide. Brevard County Transit Services operates a network of 20 fixed routes, providing service on weekdays and Saturdays from 5:10 am to 11:35 pm and Sunday service operates from 7:45 am to 5:55 pm. Brevard County Transit Services is the designated Transportation Disadvantaged Coordinator of the state and provides paratransit services throughout the County. This service includes the American with Disabilities (ADA) complementary paratransit service, which operates during the same days and hours of service as the fixed routes.

Brevard County Transit Services operates a fleet of 72 Federal Transportation Administration funded buses for fixed-route and paratransit service. Brevard County Transit Services' vehicles are used interchangeably in both modes. The bus fleet consists of 23-, 24-, 28-, 30-, 35- and 40 foot small and large buses.

Brevard County Transit Services also oversees the operations of a vanpool service that is managed under contract with Commute with Enterprise. This service is operated with FTA-funded vans. The vans are leased to individuals for use in commuter vanpools and to human service agencies that provide demand-response transportation.

Vehicles included in the direct operations at Brevard County Transit Services are maintained through a maintenance contract that is rebid every 5 years in accordance with Federal Transit Administration procurement standards. The vehicles are serviced in the maintenance bays at each terminal location and the contract includes preventive maintenance schedules. Vehicles operated by Commute with Enterprise and their contracted agencies are not included in Brevard County Transit Services' fleet maintenance contract.

Brevard County Transit Services operates from an FTA-funded North Terminal maintenance facility located at 401 South Varr Ave in Cocoa and a South Terminal maintenance facility located at 460 South Harbor City Blvd in Melbourne. The Cocoa location also houses the main administrative offices.

Policy

Brevard County Transit Services is committed to effectively managing its capital assets and maintaining its system in a State of Good Repair (SGR) to enhance safety, reduce maintenance costs, increase reliability and improve service delivery. This policy outlines the departments approach to overall asset management, identifies responsibility for monitoring and administering the Transit Asset Management (TAM) Plan and is established to ensure compliance with Federal laws and regulations including,

- ✓ 49 U.S.C. 5326(b)(2) and 5326(a)(2)(A), Section 3.1.2
- ✓ 49 U.S.C. 5326(b)(2) and 5326(a)(2)(A), Section 3.1.4
- ✓ 49 U.S.C. 5326(b)(2) and 5326(a)(2)(A), Section 3.1.5
- ✓ 49 U.S.C. 5326(b)(2) and 5326(a)(2)(A), Section 3.1.6
- ✓ 49 U.S.C. 5326(b)(3), Sections 3.1.3 and 3.2
- ✓ 49 U.S.C. 5326(c)(2), Sections 3.1.1 and 3.2
- ✓ 49 U.S.C. 5326(c)(3)(A), Sections 3.1.1 and 3.2
- ✓ 49 U.S.C. 5326(c)(3)(B), Sections 3.1.1 and 3.2
- ✓ 49 CFR 625 Subpart C, National TAM System final rule

Asset Management Approach

Transit Agency Business Benefits	Asset Management Approach
Improve customer service	<ul style="list-style-type: none"> • Improves on-time performance, service operations, and vehicle and facility cleanliness. • Reduces missed trips, slow orders, and facility shutdowns. • Focuses investments around customer-centered goals and metrics.
Improve productivity, reduced safety risks, and reduced costs	<ul style="list-style-type: none"> • Maintains assets more effectively, using condition-based approaches and predictive and preventive maintenance strategies to reduce costs while improving service delivery. • Reduces chances of maintenance-related safety hazards due to improved asset condition.
Data for decision-making	<ul style="list-style-type: none"> • Better aligns spending with County’s goal and objectives to obtain the greatest return from limited funds. • Incorporates lifecycle cost, risk and performance trade-offs into operations and capital programming. • Improves visibility for budgeting maintenance work and for understanding other costs or financial risks due to major component and/or other replacement needs. • Provides better understanding of the relationships between investments and outcomes (condition, safety, operations) and can lead to more accurate estimates of system needs to meet a target condition.

Better data for improved stakeholder communications

- Improves transparency and accountability leading to improved relationships with stakeholders.
- Provides more accurate and timely data to communicate with oversight boards and customers.

Transit Asset Management (TAM) Plan Elements

The Transit Asset Management Plan includes the following required elements:

1. An inventory of assets: A listing and information of Brevard County Transit Services capital assets, as defined by the Federal Transit Administration (FTA)
2. A condition assessment of inventoried assets: A rating of Brevard County Transit Services' capital assets' physical state.
3. Description of a decision support tool: An analytic process or tool that (1) assists in capital asset investment prioritization and/or (2) estimates capital needs over time.
4. A prioritized list of investments: A prioritized list of projects or programs to manage or improve the State of Good Repair of capital assets.

Performance Targets and Measures

Assets sufficiently maintained at their full performance level are instrumental to Brevard County Transit Services' ability to provide reliable service and minimize operating the maintenance costs over the lifecycle of buses, equipment and facilities. TAM provides a process for performance planning and establishing the strategy for transit capital assets to be maintained in a state of good repair.

Federal Transit Administration's State of Good Repair Performance Measures by Asset Class

Asset Class	Performance Measure	Definition
Rolling Stock All revenue vehicles	Age / Mileage	% of revenue vehicles within a particular asset class have met or exceeded their Useful Life Benchmark (ULB)
Equipment Maintenance equipment or non-revenue vehicles	Age / Mileage	% of vehicles that have met or exceeded their Useful Life Benchmark (ULB)
Facilities All building or structures	Condition	% of facilities with a condition rating below 3.0 on FTA's Transit Economic Requirements Model (TERM) Scale

Performance Measures of Vehicles

The default State of Good Repair performance measures as set by the Federal Transit Administration for asset categories of vehicles are as follows:

Asset	Useful Life	Source
Large Heavy-Duty Transit Buses 35'-40'	12 years/500,000 miles	FTA Circular 5010.1E
Small Heavy-Duty Transit Buses 30'	10 years/350,000 miles	FTA Circular 5010.1E
Medium Medium-Duty Transit Buses 25'-35', Sprinter Buses	7 years/200,000 miles	FTA Circular 5010.1E
Medium Light-Duty Transit Buses 25'-35', BOC Vehicles, Expansion Vans	5 years/150,000 miles	FTA Circular 5010.1E
Light-Duty Vehicles (Vans, Sedans, Light-Duty Buses), Support Vehicles, BOC (15-19 Passengers), <30 ft	4 years/100,000 miles	FTA Circular 5010.1E

Brevard County Transit Services has set the Useful Life Benchmark (ULB) for its vehicles based on our investment in good maintenance practices and our particular operating environment. Our ULB considers the geography of our county (long distances from North to South), our service frequency, and operating hours. Our ULB is not the same as "Useful Life" for the Federal Transit Administration grant programs. We accumulate higher miles than average on our buses and plan to replace major components such as remanufactured engines and transmissions while they are still relatively "young" in years.

Our ULB also considers the durability, reliability, serviceability and functionality to our service needs. Some vehicles have been found to be better than others in our fleet. This is reflected in our calculation of ULB and projected replacement schedules as seen in Attachments B, C, and D.

Performance Measures for Facilities and Equipment

The condition measure used is the five-point scale used by Federal Transit Administration's TERM Scale. This scale has the following values:

Rating	Condition	Description
5	Excellent	No visible defects, new or near new condition, may still be under warranty, if applicable.
4	Good	Good condition, but no longer new, may be slightly defective or deteriorated, but is overall functional
3	Adequate	Moderately deteriorated or defective; but has not exceeded useful life
2	Marginal	Defective or deteriorated in need of replacement; exceeded useful life
1	Poor	Critically damaged or in need of immediate repair; well past useful life

Facilities and equipment are deemed to be in good repair if they have a rating of 3, 4 or 5 on this scale. Likewise, facilities and equipment are deemed not to be in good repair if they have a rating of 1 or 2.

Attachment A – Capital Asset Inventory

ATTACHMENT A
CAPITAL ASSET INVENTORY - ROLLING STOCK

Invent. no	Type	Asset description	Location	Cap.date	Acquis.val.
BUSES					
3330172000	BUS	2007 35' GILLIG	FIXED ROUTE	11/06/2007	304,972.50
3330173000	BUS	2007 35' GILLIG	FIXED ROUTE	11/06/2007	304,972.50
3330174000	BUS	2007 35' GILLIG	FIXED ROUTE	11/06/2007	304,972.50
3330175000	BUS	2007 35' GILLIG	FIXED ROUTE	11/06/2007	304,972.50
3330176000	BUS	2007 35' GILLIG	FIXED ROUTE	11/06/2007	131,580.00
3330177000	BUS	2007 35' GILLIG	FIXED ROUTE	11/06/2007	131,580.00
3330178000	BUS	2007 40' GILLIG	FIXED ROUTE	11/07/2007	240,000.00
3330179000	BUS	2007 40' GILLIG	FIXED ROUTE	11/07/2007	240,000.00
3330193000	BUS	2011 35' GILLIG LF	FIXED ROUTE	07/14/2011	349,601.00
3330194000	BUS	2011 35' GILLIG LF	FIXED ROUTE	07/14/2011	349,601.00
3330195000	BUS	2011 35' GILLIG LF	FIXED ROUTE	07/14/2011	349,601.00
3330196000	BUS	2011 35' GILLIG LF	FIXED ROUTE	07/14/2011	349,601.00
3330197000	BUS	2011 35' GILLIG LF	FIXED ROUTE	07/14/2011	349,601.00
3330198000	BUS	2011 35' GILLIG LF	FIXED ROUTE	07/14/2011	349,601.00
3330199000	BUS	2011 35' GILLIG LF	FIXED ROUTE	07/14/2011	347,287.00
3330200000	BUS	2011 35' GILLIG LF	FIXED ROUTE	07/14/2011	347,287.00
3330201000	BUS	2011 35' GILLIG LF	FIXED ROUTE	12/29/2011	350,887.00
3330202000	BUS	2011 35' GILLIG LF	FIXED ROUTE	12/29/2011	350,887.00
3330203000	BUS	2011 35' GILLIG LF	FIXED ROUTE	12/29/2011	350,887.00
3330204000	BUS	2011 35' GILLIG LF	FIXED ROUTE	12/29/2011	350,887.00
3330205000	BUS	2011 35' GILLIG LF	FIXED ROUTE	12/29/2011	350,887.00
3330206000	BUS	2011 35' GILLIG LF	FIXED ROUTE	12/29/2011	350,887.00
3330207000	BUS	2011 40' GILLIG LF	FIXED ROUTE	01/04/2012	355,650.00
3330208000	BUS	2011 40' GILLIG LF	FIXED ROUTE	01/04/2012	355,650.00
3330227000	BUS	2013 35' GILLIG LF	FIXED ROUTE	12/11/2013	388,088.00
3330228000	BUS	2013 40' GILLIG LF	FIXED ROUTE	12/11/2013	392,289.00
3330229000	BUS	2013 40' GILLIG LF	FIXED ROUTE	12/11/2013	392,289.00
3330230000	BUS	2013 35' GILLIG LF	FIXED ROUTE	12/17/2013	388,088.00
3330231000	BUS	2015 40' GILLIG LF	FIXED ROUTE	02/04/2015	408,710.00
3330232000	BUS	2015 40' GILLIG LF	FIXED ROUTE	02/04/2015	408,710.00
3330233000	BUS	2015 40' GILLIG LF	FIXED ROUTE	02/04/2015	408,710.00

ATTACHMENT A
CAPITAL ASSET INVENTORY - ROLLING STOCK

Invent. no	Type	Asset description	Location	Cap.date	Acquis.val.
3330234000	BUS	2015 35' GILLIG LF	FIXED ROUTE	02/04/2015	403,640.00
3330236000	BUS	2016 35' GILLIG LF	FIXED ROUTE	09/16/2016	296,489.40
3330237000	BUS	2016 35' GILLIG LF	FIXED ROUTE	09/16/2016	296,489.40
3330238000	BUS	2016 35' GILLIG LF	FIXED ROUTE	09/16/2016	296,489.40
3330239000	BUS	2016 35' GILLIG LF	FIXED ROUTE	09/16/2016	296,489.40
3330240000	BUS	2016 35' GILLIG LF	FIXED ROUTE	09/16/2016	296,489.40
3330241000	BUS	2018 30' GILLIG LF	FIXED ROUTE	06/08/2018	424,310.00
3330242000	BUS	2018 30' GILLIG LF	FIXED ROUTE	06/08/2018	424,310.00
3330243000	BUS	2018 30' GILLIG LF	FIXED ROUTE	06/08/2018	424,310.00
3330244000	BUS	2018 30' GILLIG LF	FIXED ROUTE	06/08/2018	424,310.00
3330246000	BUS	2020 35' GILLIG LF TROLLEY	FIXED ROUTE	02/20/2020	558,817.00
3330251000	BUS	2020 35' GILLIG LF TROLLEY	FIXED ROUTE	04/20/2020	558,817.00
3330185000	BUS	2011 23' GLAVAL TITAN II	PARATRANSIT	05/04/2011	88,000.00
3330186000	BUS	2011 23' GLAVAL TITAN II	PARATRANSIT	05/04/2011	88,000.00
3330187000	BUS	2011 23' GLAVAL TITAN II	PARATRANSIT	05/04/2011	88,000.00
3330189000	BUS	2011 23' GLAVAL TITAN II	PARATRANSIT	05/04/2011	88,000.00
3330190000	BUS	2011 23' GLAVAL TITAN II	PARATRANSIT	05/04/2011	88,000.00
3330191000	BUS	2011 23' GLAVAL TITAN II	PARATRANSIT	05/04/2011	88,000.00
3330192000	BUS	2011 23' GLAVAL TITAN II	PARATRANSIT	05/04/2011	88,000.00
3330210000	BUS	2012 23' GLAVAL TITAN II	PARATRANSIT	09/30/2012	87,971.00
3330211000	BUS	2012 23' GLAVAL TITAN II	PARATRANSIT	09/30/2012	87,971.00
3330212000	BUS	2012 23' GLAVAL TITAN II	PARATRANSIT	09/30/2012	87,971.00
3330213000	BUS	2012 23' GLAVAL TITAN II	PARATRANSIT	09/30/2012	87,971.00
3330214000	BUS	2012 23' GLAVAL TITAN II	PARATRANSIT	09/30/2012	87,971.00
3330215000	BUS	2012 23' GLAVAL TITAN II	PARATRANSIT	09/30/2012	87,971.00
3330217000	BUS	2012 23' GLAVAL TITAN II	PARATRANSIT	01/02/2013	87,871.00
3330218000	BUS	2013 28' CHAMPION INTERNATIONAL DEFENDER	PARATRANSIT	02/22/2013	112,576.00
3330219000	BUS	2013 28' CHAMPION INTERNATIONAL DEFENDER	PARATRANSIT	02/22/2013	112,576.00
3330220000	BUS	2013 28' CHAMPION INTERNATIONAL DEFENDER	PARATRANSIT	02/22/2013	112,576.00

ATTACHMENT A
CAPITAL ASSET INVENTORY - ROLLING STOCK

Invent. no	Type	Asset description	Location	Cap.date	Acquis.val.
3330221000	BUS	2013 28' CHAMPION INTERNATIONAL DEFENDER	PARATRANSIT	02/22/2013	112,576.00
3330222000	BUS	2013 28' CHAMPION INTERNATIONAL DEFENDER	PARATRANSIT	02/22/2013	112,576.00
3330224000	BUS	2013 28' CHAMPION INTERNATIONAL DEFENDER	PARATRANSIT	02/22/2013	112,576.00
3330225000	BUS	2013 28' CHAMPION INTERNATIONAL DEFENDER	PARATRANSIT	02/22/2013	112,576.00
3330226000	BUS	2013 28' CHAMPION INTERNATIONAL DEFENDER	PARATRANSIT	02/22/2013	112,576.00
3330248000	BUS	2020 24' FORD E450 TURTLE TOP	PARATRANSIT	05/14/2020	102,055.00
3330249000	BUS	2020 24' FORD E450 TURTLE TOP	PARATRANSIT	05/14/2020	102,055.00
3330250000	BUS	2020 24' FORD E450 TURTLE TOP	PARATRANSIT	05/14/2020	102,055.00
3330245000	BUS	2020 30' FREIGHTLINER TURTLE TOP	PARATRANSIT	01/07/2020	179,909.00
3330247000	BUS	2020 30' FREIGHTLINER TURTLE TOP	PARATRANSIT	03/31/2020	179,909.00
3330254000	BUS	2020 30' FREIGHTLINER TURTLE TOP	PARATRANSIT	09/30/2020	179,909.00
3330255000	BUS	2020 30' FREIGHTLINER TURTLE TOP	PARATRANSIT	09/30/2020	179,909.00
VANS - PARATRANSIT SERVICE					
3291664000	VAN	2016 MV-1 WHEELCHAIR MOBILITY VENTURE	VIM	09/01/2017	47,923.00
3291665000	VAN	2016 MV-1 WHEELCHAIR MOBILITY VENTURE	VIM	09/01/2017	47,923.00
3291669000	VAN	2017 DODGE GRAND CARAVAN	VIM	10/01/2017	48,897.00
3291670000	VAN	2017 DODGE GRAND CARAVAN	VIM	10/01/2017	48,897.00
3291671000	VAN	2017 DODGE GRAND CARAVAN	VIM	10/01/2017	48,897.00
3291672000	VAN	2017 DODGE GRAND CARAVAN	VIM	10/01/2017	48,897.00
3291673000	VAN	2017 DODGE GRAND CARAVAN	VIM	10/01/2017	48,897.00
NON-REVENUE VEHICLES					
3290993000	SUV	2003 FORD EXPLORER	ADMIN	09/12/2002	22,959.00
3291298000	SUV	2009 FORD EXPLORER	ADMIN	09/30/2008	20,542.00
3291478000	SUV	2013 FORD ESCAPE	ADMIN	03/08/2013	18,247.00
3281503000	TRUCK	2009 FORD F-150	ADMIN	09/30/2008	16,802.00
3281799000	TRUCK	2018 FORD F-150	ADMIN	08/13/2018	21,954.25

ATTACHMENT A
CAPITAL ASSET INVENTORY - ROLLING STOCK

Invent. no	Type	Asset description	Location	Cap.date	Acquis.val.
3291320000	VAN	2009 FORD E-350	ADMIN	04/29/2009	29,511.00
3291401000	VAN	2011 DODGE GRAND CARAVAN	ADMIN	09/02/2011	23,448.38
3291392000	VAN	2011 DODGE GRAND CARAVAN	ADMIN	09/02/2011	23,448.08
3291398000	VAN	2011 DODGE GRAND CARAVAN	ADMIN	09/02/2011	23,448.08
3291399000	VAN	2011 DODGE GRAND CARAVAN	ADMIN	09/02/2011	23,448.08
3291405000	VAN	2011 DODGE GRAND CARAVAN	ADMIN	09/02/2011	23,448.08
3291440000	VAN	2012 FORD E-350 VAN	ADMIN	12/09/2013	32,014.00
3291491000	VAN	2013 FORD E-350 VAN	ADMIN	12/09/2013	33,978.00
3291492000	VAN	2013 FORD E-350 VAN	ADMIN	12/09/2013	33,978.00
3291504000	VAN	2013 FORD E-150 VAN	ADMIN	12/09/2013	28,735.00

VANS - AGENCY PARATRANSIT VANPOOL SERVICE

3291304000	VAN	2009 FORD E-350 VAN	VANPOOL	04/08/2009	39,153.00
3291307000	VAN	2009 FORD E-350 VAN	VANPOOL	04/08/2009	39,153.00
3291319000	VAN	2009 FORD E-350 VAN	VANPOOL	04/29/2009	29,511.00
3291324000	VAN	2009 FORD E-350 VAN	VANPOOL	04/29/2009	29,511.00
3291367000	VAN	2010 FORD E-350 VAN	VANPOOL	07/09/2010	40,144.00
3291369000	VAN	2010 FORD E-350 VAN	VANPOOL	07/09/2010	38,379.00
3291370000	VAN	2010 FORD E-350 VAN	VANPOOL	07/09/2010	38,379.00
3291375000	VAN	2010 FORD E-350 VAN	VANPOOL	07/09/2010	38,379.00
3291425000	VAN	2011 FORD E-350 VAN	VANPOOL	12/16/2011	43,030.00
3291426000	VAN	2011 FORD E-350 VAN	VANPOOL	12/16/2011	43,030.00
3291427000	VAN	2011 FORD E-350 VAN	VANPOOL	12/16/2011	43,030.00
3291429000	VAN	2011 FORD E-350 VAN	VANPOOL	12/16/2011	43,030.00
3291430000	VAN	2011 FORD E-350 VAN	VANPOOL	12/16/2011	43,030.00
3291431000	VAN	2011 FORD E-350 VAN	VANPOOL	01/25/2012	38,993.00
3291506000	VAN	2013 FORD E-350 VAN	VANPOOL	12/19/2013	42,411.00
3291507000	VAN	2013 FORD E-350 VAN	VANPOOL	12/19/2013	42,411.00
3291508000	VAN	2013 FORD E-350 VAN	VANPOOL	12/19/2013	42,411.00
3291509000	VAN	2013 FORD E-350 VAN	VANPOOL	12/19/2013	45,300.00
3291510000	VAN	2013 FORD E-350 VAN	VANPOOL	12/19/2013	45,300.00
3291511000	VAN	2013 FORD E-350 VAN	VANPOOL	12/19/2013	45,300.00

ATTACHMENT A
CAPITAL ASSET INVENTORY - ROLLING STOCK

Invent. no	Type	Asset description	Location	Cap.date	Acquis.val.
3291512000	VAN	2013 FORD E-350 VAN	VANPOOL	12/19/2013	45,300.00
3291513000	VAN	2013 FORD E-350 VAN	VANPOOL	12/19/2013	45,300.00
3291514000	VAN	2014 FORD E-350 VAN	VANPOOL	01/16/2014	45,300.00
3291515000	VAN	2014 FORD E-350 VAN	VANPOOL	01/16/2014	45,300.00
3291516000	VAN	2014 FORD E-350 VAN	VANPOOL	01/16/2014	45,300.00
3291517000	VAN	2014 FORD E-350 VAN	VANPOOL	01/16/2014	45,300.00
3291518000	VAN	2014 FORD E-350 VAN	VANPOOL	01/16/2014	45,300.00
3291519000	VAN	2014 FORD E-350 VAN	VANPOOL	01/16/2014	45,300.00
3291731000	VAN	2018 FORD TRANSIT VAN	VANPOOL	11/28/2017	29,000.00
3291733000	VAN	2018 FORD TRANSIT VAN	VANPOOL	11/28/2017	29,000.00
3291734000	VAN	2018 FORD TRANSIT VAN	VANPOOL	11/28/2017	29,000.00
3291736000	VAN	2018 FORD TRANSIT VAN	VANPOOL	11/28/2017	29,000.00

VANS - COMMUTER VANPOOL SERVICE

3291316000	VAN	2009 FORD E-350 VAN	VANPOOL	04/29/2009	29,511.00
3291322000	VAN	2009 FORD E-350 VAN	VANPOOL	04/29/2009	29,511.00
3291326000	VAN	2009 FORD E-350 VAN	VANPOOL	04/29/2009	29,511.00
3291346000	VAN	2010 FORD E-350 VAN	VANPOOL	05/12/2010	31,600.00
3291352000	VAN	2010 FORD E-350 VAN	VANPOOL	05/12/2010	31,600.00
3291355000	VAN	2010 FORD E-350 VAN	VANPOOL	05/12/2010	30,616.00
3291358000	VAN	2010 FORD E-350 VAN	VANPOOL	05/12/2010	30,616.00
3291359000	VAN	2010 FORD E-350 VAN	VANPOOL	05/12/2010	30,616.00
3291360000	VAN	2010 FORD E-350 VAN	VANPOOL	05/12/2010	30,616.00
3291395000	VAN	2011 DODGE GRAND CARAVAN	VANPOOL	09/02/2011	23,448.08
3291396000	VAN	2011 DODGE GRAND CARAVAN	VANPOOL	09/02/2011	23,448.08
3291403000	VAN	2011 DODGE GRAND CARAVAN	VANPOOL	09/02/2011	23,448.08
3291449000	VAN	2012 FORD E-350 VAN	VANPOOL	12/14/2011	32,014.00
3291490000	VAN	2013 FORD E-350 VAN	VANPOOL	12/09/2013	33,978.00
3291493000	VAN	2013 FORD E-350 VAN	VANPOOL	12/09/2013	33,978.00
3291495000	VAN	2013 FORD E-350 VAN	VANPOOL	12/09/2013	33,978.00
3291496000	VAN	2013 FORD E-350 VAN	VANPOOL	12/09/2013	33,978.00
3291497000	VAN	2013 FORD E-350 VAN	VANPOOL	12/09/2013	33,978.00
3291498000	VAN	2013 FORD E-350 VAN	VANPOOL	12/09/2013	33,978.00

ATTACHMENT A
CAPITAL ASSET INVENTORY - ROLLING STOCK

Invent. no	Type	Asset description	Location	Cap.date	Acquis.val.
3291501000	VAN	2013 FORD E-350 VAN	VANPOOL	12/09/2013	33,978.00
3291502000	VAN	2013 FORD E-150 VAN	VANPOOL	12/09/2013	28,735.00
3291503000	VAN	2013 FORD E-150 VAN	VANPOOL	12/09/2013	28,735.00
3291505000	VAN	2013 FORD E-150 VAN	VANPOOL	12/09/2013	28,735.00
3291674000	VAN	2018 FORD TRANSIT VAN	VANPOOL	11/28/2017	29,000.00
3291675000	VAN	2018 FORD TRANSIT VAN	VANPOOL	11/28/2017	29,000.00
3291676000	VAN	2018 FORD TRANSIT VAN	VANPOOL	11/28/2017	29,000.00
3291677000	VAN	2018 FORD TRANSIT VAN	VANPOOL	11/28/2017	29,000.00
3291678000	VAN	2018 FORD TRANSIT VAN	VANPOOL	11/28/2017	29,000.00
3291679000	VAN	2018 FORD TRANSIT VAN	VANPOOL	11/28/2017	25,386.00
3291680000	VAN	2018 FORD TRANSIT VAN	VANPOOL	11/28/2017	25,386.00
3291681000	VAN	2018 FORD TRANSIT VAN	VANPOOL	11/28/2017	25,386.00
3291682000	VAN	2018 FORD TRANSIT VAN	VANPOOL	11/28/2017	25,386.00
3291683000	VAN	2018 FORD TRANSIT VAN	VANPOOL	11/28/2017	25,386.00
3291684000	VAN	2018 FORD TRANSIT VAN	VANPOOL	11/28/2017	25,386.00
3291685000	VAN	2018 FORD TRANSIT VAN	VANPOOL	11/28/2017	25,386.00
3291686000	VAN	2018 FORD TRANSIT VAN	VANPOOL	11/28/2017	25,386.00
3291728000	VAN	2018 FORD TRANSIT VAN	VANPOOL	11/28/2017	29,000.00
3291729000	VAN	2018 FORD TRANSIT VAN	VANPOOL	11/28/2017	29,000.00
3291730000	VAN	2018 FORD TRANSIT VAN	VANPOOL	11/28/2017	29,000.00
3291732000	VAN	2018 FORD TRANSIT VAN	VANPOOL	11/28/2017	29,000.00
3291735000	VAN	2018 FORD TRANSIT VAN	VANPOOL	11/28/2017	29,000.00
3291737000	VAN	2018 FORD TRANSIT VAN	VANPOOL	11/28/2017	29,000.00
3291738000	VAN	2018 FORD TRANSIT VAN	VANPOOL	11/28/2017	25,386.00
3291739000	VAN	2018 FORD TRANSIT VAN	VANPOOL	11/28/2017	25,386.00
3291740000	VAN	2018 FORD TRANSIT VAN	VANPOOL	11/28/2017	25,386.00
3291741000	VAN	2018 FORD TRANSIT VAN	VANPOOL	11/28/2017	25,386.00
3291742000	VAN	2018 FORD TRANSIT VAN	VANPOOL	11/28/2017	25,386.00
3291743000	VAN	2018 FORD TRANSIT VAN	VANPOOL	11/28/2017	25,386.00
3291744000	VAN	2018 FORD TRANSIT VAN	VANPOOL	11/28/2017	29,000.00
3291828000	VAN	2018 FORD SMART ACCESS VAN	VANPOOL	01/10/2019	66,921.00
3291829	VAN	2018 FORD SMART ACCESS VAN	VANPOOL	01/10/2019	66,921.00

BUS INVENTORY

Location	SCAT	Year	Asset Mgmt	Fuel	Model	Engine	Transmission	VIN Number	Plate	Length	Doors	Seats & WC Positions	Lift	Fare Box	Camera	Sign	Grant Purchased	Eligible Retire Date	Scheduled Retire Date	Life Miles 09/25/2020
South	2211	2011	3330185	Dsl	Glaval Titan II	6.6L Duramax	GM Hydro	1GB9G5AL4A1181855	TC6928	23'	1	14+6	Braun	Diamond	Apollo 4	None	FTA	2016	2020	211,606
South	2212	2011	3330189	Dsl	Glaval Titan II	6.6L Duramax	GM Hydro	1GB9G5AL2A1183460	TC6933	23'	1	14+6	Braun	Diamond	Apollo 4	None	FTA	2016	2022	237,140
North	2213	2011	3330186	Dsl	Glaval Titan II	6.6L Duramax	GM Hydro	1GB9G5AL3A1183600	TC6927	23'	1	14+6	Braun	Diamond	Apollo 4	None	FTA	2016	2020	238,206
South	2214	2011	3330190	Dsl	Glaval Titan II	6.6L Duramax	GM Hydro	1GB9G5AL8A1183687	TC6934	23'	1	14+6	Braun	Diamond	Apollo 4	None	FTA	2016	2023	226,979
South	2215	2011	3330187	Dsl	Glaval Titan II	6.6L Duramax	GM Hydro	1GB9G5AL7A1183860	TC6931	23'	1	14+6	Braun	Diamond	Apollo 4	None	FTA	2016	2020	247,848
South	2216	2011	3330191	Dsl	Glaval Titan II	6.6L Duramax	GM Hydro	1GB9G5AL5A1184151	TC6930	23'	1	14+6	Braun	Diamond	Apollo 4	None	FTA	2016	2020	261,762
North	2218	2011	3330192	Dsl	Glaval Titan II	6.6L Duramax	GM Hydro	1GB9G5ALXA1184241	TC6932	23'	1	14+6	Braun	Diamond	Apollo 4	None	FTA	2016	2021	194,159
South	2321	2012	3330210	Dsl	Glaval Titan II	6.6L Duramax	GM Hydro	1GB6G5BL2C1161026	TC9765	23'	1	15+4	Braun	Diamond	Apollo 4	None	FTA	2017	2021	246,676
South	2322	2012	3330211	Dsl	Glaval Titan II	6.6L Duramax	GM Hydro	1GB6G5BLXC1180732	TC9766	23'	1	15+4	Braun	Diamond	Apollo 4	None	FTA	2017	2020	245,159
South	2324	2012	3330214	Dsl	Glaval Titan II	6.6L Duramax	GM Hydro	1GB6G5BL2C1180658	TC9768	23'	1	15+4	Braun	Diamond	Apollo 4	None	FTA	2017	2022	239,072
South	2325	2012	3330213	Dsl	Glaval Titan II	6.6L Duramax	GM Hydro	1GB6G5BL2C1181051	TC9769	23'	1	15+4	Braun	Diamond	Apollo 4	None	FTA	2017	2020	254,387
North	2326	2012	3330215	Dsl	Glaval Titan II	6.6L Duramax	GM Hydro	1GB6G5BL7C1181062	TC9770	23'	1	15+4	Braun	Diamond	Apollo 4	None	FTA	2017	2020	275,382
North	2327	2012	3330212	Dsl	Glaval Titan II	6.6L Duramax	GM Hydro	1GB6G5BLXC1181542	TC9771	23'	1	15+4	Braun	Diamond	Apollo 4	None	FTA	2017	2022	232,628
South	2332	2012	3330217	Dsl	Glaval Titan II	6.6L Duramax	GM Hydro	1GB6G5BL3C1184749	TC9774	23'	1	15+4	Braun	Diamond	Apollo 4	None	FTA	2017	2020	235,109
North	2401	2019	3330248	Gas	Ford E450 Turtle Top	6.8L V10	Ford Torqueshift 6 Speed	1FDFE4FS3KDC43868	TH7756	24'	1	14+4	Braun NCL1000	Diamond	Apollo HD 7	None	5310	2025	2026	12,482
North	2402	2019	3330249	Gas	Ford E450 Turtle Top	6.8L V10	Ford Torqueshift 6 Speed	1FDFE4FS5KDC43869	TH7754	24'	1	14+4	Braun NCL1000	Diamond	Apollo HD 7	None	5310	2025	2026	11,425
North	2403	2019	3330250	Gas	Ford E450 Turtle Top	6.8L V10	Ford Torqueshift 6 Speed	1FDFE4FS1KDC43870	TH7755	24'	1	14+4	Braun NCL1000	Diamond	Apollo HD 7	None	5310	2025	2026	9,747
North	2811	2013	3330219	Dsl	Champion Int'l -Def	MaxxFORCE 7	Allison	5WEXWSK2DH418829	TD0735	28'	1	20+6	Braun	Diamond	Apollo 4	Twin Vision	FTA	2018	2023	190,180
North	2812	2013	3330226	Dsl	Champion Int'l -Def	MaxxFORCE 7	Allison	5WEXWSK6DH418834	TD0734	28'	1	20+6	Braun	Diamond	Apollo 4	Twin Vision	FTA	2018	2021	189,510
North	2813	2013	3330220	Dsl	Champion Int'l -Def	MaxxFORCE 7	Allison	5WEXWSK8DH418835	TD0728	28'	1	20+6	Braun	Diamond	Apollo 4	Twin Vision	FTA	2018	2022	187,484
North	2814	2013	3330221	Dsl	Champion Int'l -Def	MaxxFORCE 7	Allison	5WEXWSK2DH418832	TD0733	28'	1	20+6	Braun	Diamond	Apollo 4	Twin Vision	FTA	2018	2022	191,933
North	2816	2013	3330224	Dsl	Champion Int'l -Def	MaxxFORCE 7	Allison	5WEXWSK0DH418828	TD0727	28'	1	20+6	Braun	Diamond	Apollo 4	Twin Vision	FTA	2018	2023	186,751
North	2817	2013	3330222	Dsl	Champion Int'l -Def	MaxxFORCE 7	Allison	5WEXWSK0DH418831	TD0732	28'	1	20+6	Braun	Diamond	Apollo 4	Twin Vision	FTA	2018	2021	217,876

BUS INVENTORY

Location	SCAT	Year	Asset Mgmt	Fuel	Model	Engine	Transmission	VIN Number	Plate	Length	Doors	Seats & WC Positions	Lift	Fare Box	Camera	Sign	Grant Purchased	Eligible Retire Date	Scheduled Retire Date	Life Miles 09/25/2020
South	2818	2013	3330225	Dsl	Champion Int'l -Def	MaxxForce 7	Allison	5WEXWSKXDH418836	TD0731	28'	1	20+6	Braun	Diamond	Apollo 4	Twin Vision	FTA	2018	2020	201,181
South	2819	2013	3330218	Dsl	Champion Int'l -Def	MaxxForce 7	Allison	5WEXWSK9DH418830	TD0730	28'	1	20+6	Braun	Diamond	Apollo 4	Twin Vision	FTA	2018	2021	194,148
North	3021	2018	580331	Dsl	Gillig LF	CUM ISL	Allison	15GGE2718J3093398	TG2607	30'	1	27+3	Lift-U	GFI	Apollo HD 8	Twin Vision	FTA	2030	2032	137,764
South	3022	2018	580330	Dsl	Gillig LF	CUM ISL	Allison	15GGE271XJ3093399	TG2605	30'	1	27+3	Lift-U	GFI	Apollo HD 8	Twin Vision	FTA	2030	2032	79,033
South	3023	2018	580329	Dsl	Gillig LF	CUM ISL	Allison	15GGE2712J3093400	TG2606	30'	1	27+3	Lift-U	GFI	Apollo HD 8	Twin Vision	FTA	2030	2032	97,766
South	3024	2018	580332	Dsl	Gillig LF	CUM ISL	Allison	15GGE2714J3093401	TG2604	30'	1	27+3	Lift-U	GFI	Apollo HD 8	Twin Vision	FTA	2030	2032	83,384
South	3031	2019	3330245	Dsl	Freightliner Turtle Top	CUM 6.7L	Allison B220	4UZADPFD3LCLY5757	TH2660	30'	1	20+4	Braun NCL1000	Diamond	Apollo HD 7	Luminator	FTA	2025	2027	19,046
South	3032	2019	3330247	Dsl	Freightliner Turtle Top	CUM 6.7L	Allison B220	4UZADPFD1LCLY5756	TH7771	30'	1	20+4	Braun NCL1000	Diamond	Apollo HD 7	Luminator	FTA	2025	2027	13,655
North	3033	2019	3330255	Dsl	Freightliner Turtle Top	CUM 6.7L	Allison B220	4UZADPFD7LCLY5759	TH9737	30'	1	20+4	Braun NCL1000	Diamond	Apollo HD 7	Luminator	5310	2025	2027	1,654
North	3034	2019	3330254	Dsl	Freightliner Turtle Top	CUM 6.7L	Allison B220	4UZADPFD5LCLY5758	TH9751	30'	1	20+4	Braun NCL1000	Diamond	Apollo HD 7	Luminator	5310	2025	2027	1,414
North	3505	2020	3330246	Dsl	Gillig LF Trolley	CUM LD 280HP	Allison B400R	15GGB2717L3194010	TH8299	35'	2	28+3	Lift-U LU18	GFI	Apollo HD 8	Luminator	FTA	2032	2034	3,543
North	3506	2020	3330251	Dsl	Gillig LF Trolley	CUM LD 280HP	Allison B400R	15GGB2719L3194011	TI0202	35'	2	28+3	Lift-U LU18	GFI	Apollo HD 8	Luminator	FTA	2032	2034	4,303
South	3510	2007	3330172	Dsl	Gillig LF	CUM ISL	Allison	15GGB271471078460	TA9658	35'	2	30+2	Lift-U	GFI	Apollo HD 8	Luminator	FTA	2019	2022	589,661
North	3511	2007	3330173	Dsl	Gillig LF	CUM ISL	Allison	15GGB271671078461	TA9659	35'	2	30+2	Lift-U	GFI	Apollo HD 8	Luminator	FTA	2016	2021	769,635
South	3512	2007	3330174	Dsl	Gillig LF	CUM ISL	Allison	15GGB271871078462	TA9660	35'	2	30+2	Lift-U	GFI	Apollo HD 8	Luminator	FTA	2019	2022	654,751
North	3513	2007	3330175	Dsl	Gillig LF	CUM ISL	Allison	15GGB271X71078463	TA9661	35'	2	30+2	Lift-U	GFI	Apollo HD 8	Luminator	FTA	2016	2021	713,076
North	3520	2007	3330176	Dsl	Gillig LF	CUM ISL	Allison	15GGB271171078464	TB2428	35'	1	33+4	Lift-U	GFI	Apollo HD 8	Luminator	FTA	2019	2022	614,262
South	3521	2007	3330177	Dsl	Gillig LF	CUM ISL	Allison	15GGB271371078465	TB2429	35'	1	33+4	Lift-U	GFI	Apollo HD 8	Luminator	FTA	2019	2022	617,692
North	3531	2011	3330193	Dsl	Gillig LF	CUM ISL	Allison	15GGB2711B1179917	TC3180	35'	2	30+2	Lift-U	GFI	Apollo HD 8	Twin Vision	FTA	2023	2022	613,683
South	3532	2011	3330194	Dsl	Gillig LF	CUM ISL	Allison	15GGB2713B1179918	TC3181	35'	2	30+2	Lift-U	GFI	Apollo HD 8	Twin Vision	FTA	2023	2024	447,509
North	3533	2011	3330195	Dsl	Gillig LF	CUM ISL	Allison	15GGB2715B1179919	TC3182	35'	2	30+2	Lift-U	GFI	Apollo HD 8	Twin Vision	FTA	2023	2025	442,354
North	3534	2011	3330196	Dsl	Gillig LF	CUM ISL	Allison	15GGB2711B1179920	TC3183	35'	2	30+2	Lift-U	GFI	Apollo HD 8	Twin Vision	FTA	2023	2024	463,088
South	3535	2011	3330197	Dsl	Gillig LF	CUM ISL	Allison	15GGB2713B1179921	TC3184	35'	2	30+2	Lift-U	GFI	Apollo HD 8	Twin Vision	FTA	2023	2022	576,221
North	3536	2011	3330198	Dsl	Gillig LF	CUM ISL	Allison	15GGB2715B1179922	TC3185	35'	2	30+2	Lift-U	GFI	Apollo HD 8	Twin Vision	FTA	2023	2024	458,875

BUS INVENTORY

Location	SCAT	Year	Asset Mgmt	Fuel	Model	Engine	Transmission	VIN Number	Plate	Length	Doors	Seats & WC Positions	Lift	Fare Box	Camera	Sign	Grant Purchased	Eligible Retire Date	Scheduled Retire Date	Life Miles 09/25/2020
North	3541	2011	3330199	Dsl	Gillig LF	CUM ISL	Allison	15GGB2717B1179923	TC3186	35'	1	30+4	Lift-U	GFI	Apollo HD 8	Twin Vision	FTA	2023	2023	474,882
South	3542	2011	3330200	Dsl	Gillig LF	CUM ISL	Allison	15GGB2719B1179924	TC3187	35'	1	30+4	Lift-U	GFI	Apollo HD 8	Twin Vision	FTA	2023	2023	479,262
North	3551	2011	3330201	Dsl	Gillig LF	CUM ISL	Allison	15GGB2719B1180118	TC8400	35'	2	30+2	Lift-U	GFI	Apollo HD 8	Twin Vision	FTA	2023	2024	466,013
North	3552	2011	3330202	Dsl	Gillig LF	CUM ISL	Allison	15GGB2710B1180119	TC8401	35'	2	30+2	Lift-U	GFI	Apollo HD 8	Twin Vision	FTA	2023	2023	500,146
South	3553	2011	3330203	Dsl	Gillig LF	CUM ISL	Allison	15GGB2717B1180120	TC8402	35'	2	30+2	Lift-U	GFI	Apollo HD 8	Twin Vision	FTA	2023	2023	532,432
South	3554	2011	3330204	Dsl	Gillig LF	CUM ISL	Allison	15GGB2719B1180121	TC8403	35'	2	30+2	Lift-U	GFI	Apollo HD 8	Twin Vision	FTA	2023	2023	563,497
South	3555	2011	3330205	Dsl	Gillig LF	CUM ISL	Allison	15GGB2710B1180122	TC8404	35'	2	30+2	Lift-U	GFI	Apollo HD 8	Twin Vision	FTA	2023	2025	459,902
South	3556	2011	3330206	Dsl	Gillig LF	CUM ISL	Allison	15GGB2712B1180123	TC8405	35'	2	30+2	Lift-U	GFI	Apollo HD 8	Twin Vision	FTA	2023	2023	525,973
North	3561	2013	3330227	Dsl	Gillig LF	CUM ISL	Allison	15GGB2715D1182774	TD5615	35'	2	31+2	Lift-U	GFI	Apollo HD 8	Twin Vision	FTA	2025	2026	423,649
North	3562	2013	3330230	Dsl	Gillig LF	CUM ISL	Allison	15GGB2717D1182775	TD5616	35'	2	31+2	Lift-U	GFI	Apollo HD 8	Twin Vision	FTA	2025	2026	452,094
South	3571	2015	3330234	Dsl	Gillig LF	CUM ISL	Allison	15GGB2718F1185350	TE0157	35'	2	29+3	Lift-U	GFI	Apollo HD 8	Twin Vision	FTA	2027	2027	235,150
North	3581	2016	3330236	Dsl	Gillig LF	CUM ISL	Allison	15GGB2718G1189187	TF3565	35'	2	29+3	Lift-U	GFI	Apollo HD8	Twin Vision	FTA	2028	2028	268,809
North	3582	2016	3330237	Dsl	Gillig LF	CUM ISL	Allison	15GGB271XG1189188	TF3566	35'	2	29+3	Lift-U	GFI	Apollo HD8	Twin Vision	FTA	2028	2028	220,739
South	3583	2016	3330238	Dsl	Gillig LF	CUM ISL	Allison	15GGB2711G1189189	TF3564	35'	2	29+3	Lift-U	GFI	Apollo HD8	Twin Vision	FTA	2028	2028	301,867
South	3584	2016	3330239	Dsl	Gillig LF	CUM ISL	Allison	15GGB2718G1189190	TF3563	35'	2	29+3	Lift-U	GFI	Apollo HD8	Twin Vision	FTA	2028	2028	262,466
South	3585	2016	3330240	Dsl	Gillig LF	CUM ISL	Allison	15GGB271XG1189191	TF3573	35'	2	29+3	Lift-U	GFI	Apollo HD8	Twin Vision	FTA	2028	2028	277,332
North	4010	2007	3330178	Dsl	Gillig LF	CUM ISL	Allison	15GGD271271078466	TB2430	40'	2	34+2	Lift-U	GFI	Apollo HD8	Luminator	FTA	2019	2021	660,488
North	4011	2007	3330179	Dsl	Gillig LF	CUM ISL	Allison	15GGD271471078467	TB2431	40'	2	34+2	Lift-U	GFI	Apollo HD8	Luminator	FTA	2016	2021	765,922
North	4021	2011	3330207	Dsl	Gillig LF	CUM ISL	Allison	15GGD2711B1180124	TC8406	40'	2	37+2	Lift-U	GFI	Apollo HD8	Twin Vision	FTA	2023	2023	506,310
South	4022	2011	3330208	Dsl	Gillig LF	CUM ISL	Allison	15GGD2713B1180125	TC8407	40'	2	37+2	Lift-U	GFI	Apollo HD8	Twin Vision	FTA	2023	2023	546,217
North	4031	2013	3330229	Dsl	Gillig LF	CUM ISL	Allison	15GGD2719D1182772	TD5613	40'	2	38+2	Lift-U	GFI	Apollo HD8	Twin Vision	FTA	2025	2025	554,443
South	4032	2013	3330228	Dsl	Gillig LF	CUM ISL	Allison	15GGD2710D1182773	TD5614	40'	2	38+2	Lift-U	GFI	Apollo HD8	Twin Vision	FTA	2025	2026	411,332
North	4041	2015	3330232	Dsl	Gillig LF	CUM ISL	Allison	15GGD2715F1185347	TE0155	40'	2	35+3	Lift-U	GFI	Apollo HD8	Twin Vision	FTA	2027	2027	434,098
North	4042	2015	3330233	Dsl	Gillig LF	CUM ISL	Allison	15GGD2717F1185348	TE0156	40'	2	35+4	Lift-U	GFI	Apollo HD8	Twin Vision	FTA	2027	2027	360,394

BUS INVENTORY

Location	SCAT	Year	Asset Mgmt	Fuel	Model	Engine	Transmission	VIN Number	Plate	Length	Doors	Seats & WC Positions	Lift	Fare Box	Camera	Sign	Grant Purchased	Eligible Retire Date	Scheduled Retire Date	Life Miles 09/25/2020
South	4043	2015	3330231	Dsl	Gillig LF	CUM ISL	Allison	15GGD2719F1185349	TE0154	40'	2	35+3	Lift-U	GFI	Apollo HD8	Twin Vision	FTA	2027	2027	296,058

ADMINISTRATION VEHICLE INVENTORY

Administration Support Vehicle Inventory

Location	Veh.#	Year	Make	Model	Asset#	VIN#	Plate#	Passenger	WC	Life Miles 09/25/2020
North	1001	2002	Ford	Explorer	3290993	1FMZU62K62UD46784	205962	5	No	110,145
South	1016	2009	Ford	Explorer	3291298	1FMEU63E19UA04693	TB5683	5	No	71,256
North	1017	2009	Ford	F150	3281503	1FTRF12W49KA47529	TB5691	2	No	72,159
North	1022	2013	Ford	Escape	3291478	1FMCU0F75DUC80482	TC3553	5	No	44,823
South	1030	2011	Dodge	Gr.Caravan	3291401	2D4RN4DGXBR769530	TC3330	7	No	150,324
North	1031	2009	Ford	E350	3291320	1FDSS31L19DA48167	TB5733	15	No	54,031
South	1032	2018	Ford	F150	3281799	1FTMF1CB1JKF06946	TG2632	2	No	8,573
North	1033	2011	Dodge	Gr.Caravan	3291392	2D4RN4DG9BR769521	TC3189	7	No	135,256
North	1034	2011	Dodge	Gr.Caravan	3291405	2D4RN4DG6BR769802	TC3331	7	No	115,351
South	1035	2011	Dodge	Gr.Caravan	3291399	2D4RN4DG1BR769528	TC3328	7	No	149,855
South	1036	2012	Ford	E350	3291440	1FDSS3BL8CDA09386	TC8389	12	No	136,958
North	1037	2013	Ford	E350	3291492	1FDSS3BL3DDB22454	TD6351	11	No	117,933
South	1038	2013	Ford	E150	3291504	1FDNE1BW9DDB20677	TD7472	8	No	103,598
North	1039	2011	Dodge	Gr.Caravan	3291398	2D4RN4DGXBR769527	TC3191	7	No	103,561
South	1040	2013	Ford	E350	3291491	1FDSS3BL1DDB22453	TD6353	11	No	109,423

Volunteers in Motion Vehicle Inventory

Location	Veh.#	Year	Make	Model	Asset#	VIN#	Plate#	Passenger	WC	Life Miles 09/25/2020
	1601	2016	Mobility Ventures	MV-1	3291665	57WMD2C66GM100362	TF5167	3	Yes	6,984
	1602	2016	Mobility Ventures	MV-1	3291664	57WMD2C65GM100529	TF5168	3	Yes	12,149
	1701	2017	Dodge	Grand Caravan SXT	3291670	2C7WDGCGOHR794065	TF9163	5	Yes	31,533
	1702	2017	Dodge	Grand Caravan SXT	3291671	2C7W DGCG4HR794067	TF9164	5	Yes	19,780
	1703	2017	Dodge	Grand Caravan SXT	3291672	2C7WDGCG6HR794068	TF9165	5	Yes	19,803
	1704	2017	Dodge	Grand Caravan SXT	3291673	2C7WDGCG7HR781460	TF9166	5	Yes	12,072
	1705	2017	Dodge	Grand Caravan SXT	3291669	2C7WDGCG8HR794069	TF9167	5	Yes	25,448

ATTACHMENT A
CAPITAL ASSET INVENTORY - FACILITIES AND EQUIPMENT

Invent. no	Type	Asset description	Location	Cap.date	Acquis.val.
FACILITIES					
9012000100	FACILITIES	LAND - 401 VARR AVE, COCOA	NORTH TERMINAL	08/28/1990	142,200.00
9128006200	FACILITIES	MAIN BUILDING - 401 VARR AVE, COCOA	NORTH TERMINAL	09/24/1992	839,214.00
9128006200	FACILITIES	GARAGE AND BAY - 401 VARR AVE, COCOA	NORTH TERMINAL	08/31/1995	129,368.00
	FACILITIES	ADMINISTRATION ADDITION - 401 VARR AVE, COCOA	NORTH TERMINAL	09/24/1992	185,333.06
	FACILITIES	BUILDING MODULAR - TRAINING CENTER - 401 VARR AVE, COCOA	NORTH TERMINAL	10/01/2006	80,316.07
9128001300	FACILITIES	PARKING LOT - 401 VARR AVE, COCOA	NORTH TERMINAL	09/20/1984	35,873.00
	FACILITIES	1125 W KING ST PROPERTY - FUTURE PARKING EXPANSION	NORTH TERMINAL	05/09/2017	
	FACILITIES	FUEL ISLAND CANOPY - 401 VARR AVE, COCOA	NORTH TERMINAL	04/30/2017	270,157.87
	FACILITIES	TANK - 10,000 GAL ABOVE GROUND STORAGE TANK #2	NORTH TERMINAL	04/18/2005	45,000.00
	FACILITIES	TANK - 1,000 GAL ABOVE GROUND STORAGE TANK #4	NORTH TERMINAL	04/18/2005	35,000.00
9025009700	FACILITIES	LAND - 460 HARBOR CITY, MELBOURNE	SOUTH TERMINAL	10/01/1985	86,320.00
9128006500	FACILITIES	OFFICES - 460 HARBOUR CITY, MELBOURNE	SOUTH TERMINAL	10/01/1995	232,316.00
9128006500	FACILITIES	GARAGE AND BAY - 460 HARBOR CITY, MELBOURNE	SOUTH TERMINAL	10/01/1995	
9102005900	FACILITIES	GARAGE/TIRE BUILDING - 460 HARBOUR CITY, MELBOURNE	SOUTH TERMINAL	10/01/1995	50,000.00
9128001300	FACILITIES	PARKING LOT - 460 HARBOR CITY, MELBOURNE	SOUTH TERMINAL	09/20/1984	35,873.00
	FACILITIES	FUEL ISLAND CANOPY MELBOURNE SCAT	SOUTH TERMINAL	03/31/2008	110,660.79
4310165000	FACILITIES	TANK - 10,000 GAL ABOVE GROUND STORAGE TANK #2	SOUTH TERMINAL	04/18/2005	45,000.00
4310166000	FACILITIES	TANK - 1,000 GAL ABOVE GROUND STORAGE TANK #4	SOUTH TERMINAL	04/18/2005	35,000.00
SHELTER					
	SHELTER	BUS SHELTER @ N. WICKHAM ROAD - EFSC	EFSC - MELBOURNE	09/30/2007	54,789.45
	SHELTER	TRANSFER STATION - 1700 NEW HAVEN AVE, MELBOURNE - MELBOURNE SQUARE MALL	MELBOURNE MALL	04/14/2014	175,259.92

ATTACHMENT A
CAPITAL ASSET INVENTORY - FACILITIES AND EQUIPMENT

Invent. no	Type	Asset description	Location	Cap.date	Acquis.val.
EQUIPMENT					
0188931000	EQUIPMENT	CONSOLE SYMPHONY DISPATCH HARRIS	NORTH TERMINAL	09/30/2016	42,349.50
0940094000	EQUIPMENT	VAULT STATIONARY GENFARE	NORTH TERMINAL	06/30/2011	32,000.00
0940093000	EQUIPMENT	VAULT STATIONARY GENFARE	SOUTH TERMINAL	06/22/2011	32,000.00
5040343000	EQUIPMENT	GENERATOR 100KW SPECTRUM - 460 HARBOR CITY, MELBOURNE	SOUTH TERMINAL	11/07/1996	21,378.00
5040354000	EQUIPMENT	GENERATOR 100 KW SPECTRUM - 401 VARR AVE, COCOA	NORTH TERMINAL	09/18/1997	21,378.00
	EQUIPMENT	PLATFORM BUS LIFT STERTIL-KONI SKYLIFT - 401 S. VARR AVE, COCOA	NORTH TERMINAL	06/01/2017	238,792.22
	EQUIPMENT	PLATFORM BUS LIFT STERTIL-KONI SKYLIFT - 460 S. HARBOR CITY, MELBOURNE	SOUTH TERMINAL	03/30/2019	337,235.22
	EQUIPMENT	VAC & PRESSURE WASH SYSTEMS - 401 VARR AVE, COCOA	NORTH TERMINAL	04/30/2017	61,196.30
	EQUIPMENT	VAC & PRESSURE WASH SYSTEMS - 460 S HARBOR CITY, MELBOURNE	SOUTH TERMINAL		
	EQUIPMENT	OUTSIDE LIGHTING - 401 VARR AVE, COCOA	NORTH TERMINAL	10/01/2014	109,372.09
	EQUIPMENT	OUTSIDE LIGHTING - 460 HARBOR CITY, MELBOURNE	SOUTH TERMINAL	10/01/2014	105,444.73
	EQUIPMENT	SURVEILLANCE SECURITY SYSTEM - 401 VARR AVE, COCOA	NORTH TERMINAL	10/01/2014	115,139.46
	EQUIPMENT	SURVEILLANCE SECURITY SYSTEM - 460 HARBOR CITY, MELBOURNE	SOUTH TERMINAL	10/01/2014	97,868.28
SOFTWARE					
	SOFTWARE	SOFTWARE - TRAPEZE SOFTWARE GROUP	NORTH TERMINAL	08/01/2005	65,948.00

Attachment B – Condition Assessment of Capital Assets

ATTACHMENT B
CONDITION ASSESSMENT OF CAPITAL ASSETS

Asset Category	Asset Class	Individual Asset(s)	Fleet Size	Vehicle/ Equipment Age	FTA Years Useful Life Benchmark (ULB)	SCAT Years Useful Life Benchmark (ULB)	Years Remaining	Average Lifetime Miles	FTA State of Good Repair (SGR)	SCAT Miles Useful Life Benchmark (ULB)	Miles Remaining	Exceed Useful Life Benchm ark (ULB)	FY 20 Performance Metric (% Exceeding ULB)
Rolling Stock	Bus (BU) Fixed Route (43 Vehicles)	2007 35' Gillig LF	6	13	12	14	1	659,846	500,000	650,000	-9,846	E	19%
		2007 40' Gillig LF	2	13	12	14	1	713,205	500,000	650,000	-63,205	E	
		2011 35' Gillig LF	14	9	12	14	5	536,008	500,000	650,000	113,992		
		2011 40' Gillig LF	2	9	12	14	5	526,264	500,000	650,000	123,736		
		2013 35' Gillig LF	2	7	12	14	7	437,872	500,000	650,000	212,128		
		2013 40' Gillig LF	2	7	12	14	7	482,888	500,000	650,000	167,112		
		2015 35' Gillig LF	1	5	12	14	9	235,150	500,000	650,000	414,850		
		2015 40' Gillig LF	3	5	12	14	9	363,517	500,000	650,000	286,483		
		2016 35' Gillig LF	5	4	12	14	10	266,243	500,000	650,000	383,757		
		2018 30' Gillig LF	4	2	10	12	10	99,487	350,000	500,000	400,513		
		2020 35' Gillig LF Trolley	2	0	12	14	14	3,923	500,000	650,000	646,077		
	Cutaway Bus (CU) Paratransit (29 Vehicles)	2011 23' Glaval Titan II	7	9	5	7	-2	231,100	150,000	175,000	-56,100	E	76%
		2012 23' Glaval Titan II	7	8	5	7	-1	246,916	150,000	175,000	-71,916	E	
		2013 28' Champion Int'l Defender	8	7	5	6	-1	194,883	150,000	160,000	-34,883	E	
		2020 24' Ford E450 Turtletop	3	0	5	7	7	11,218	200,000	200,000	188,782		
		2020 30' Freightliner Turtletop	4	0	5	7	6	8,942	200,000	200,000	191,058		
	Van (VN) Volunteers in Motion (7 Vehicles)	2016 MV-1	2	4	4	7	3	9,567	100,000	100,000	90,433		0%
		2017 Dodge Grand Caravan	5	3	4	7	4	21,727	100,000	100,000	78,273		
	Non-Revenue Service Vehicles (15 Vehicles)	2002 Ford Explorer	1	18	4	9	-9	110,145	100,000	125,000	14,855	E	67%
		2009 Ford Explorer	1	11	4	9	-2	71,256	100,000	125,000	53,744	E	
		2009 Ford F-150 Pick-Up	1	11	4	9	-2	72,159	100,000	125,000	52,841	E	
		2009 Ford E-350 Van	1	11	4	9	-2	54,031	100,000	125,000	70,969	E	
		2011 Dodge Grand Caravan	5	9	4	9	0	130,869	100,000	125,000	-5,869	E	
		2012 Ford E-350 Van	1	8	4	9	1	136,958	100,000	125,000	-11,958	E	
		2013 Ford Escape	1	7	4	9	2	44,823	100,000	125,000	80,177		
		2013 Ford E-350 Van	2	7	4	9	2	113,678	100,000	125,000	11,322		
		2013 Ford E-150 Van	1	7	4	9	2	103,598	100,000	125,000	21,402		
	2018 Ford F-150 Pick-Up	1	2	4	9	7	8,573	100,000	125,000	116,427			
	Agency Paratransit Vanpool Vans (39 Vehicles)	2009 Ford E-350 Van	6	11	4	7	-4	61,624	100,000	100,000	38,376	E	41%
		2010 Ford E-350 Van	3	10	4	7	-3	99,766	100,000	100,000	234	E	
		2011 Dodge Grand Caravan	1	9	4	6	-3	131,487	100,000	100,000	-31,487	E	
		2011 Ford E-350 Van	6	9	4	7	-2	110,829	100,000	100,000	-10,829	E	
		2013 Ford E-350 Van	8	7	4	7	0	57,623	100,000	100,000	42,377		
		2014 Ford E-350 Van	6	6	4	7	1	56,646	100,000	100,000	43,354		
Commuter Vanpool Vans (39 Vehicles)	2018 Ford Transit Van	9	2	4	6	4	26,691	100,000	100,000	73,309		41%	
	2009 Ford E-350 Van	1	11	4	6	-5	50,227	100,000	100,000	49,773	E		
	2010 Ford E-350 Van	3	10	4	6	-4	79,846	100,000	100,000	20,154	E		
	2011 Dodge Grand Caravan	2	9	4	6	-3	107,078	100,000	100,000	-7,078	E		
	2012 Ford E-350 Van	1	8	4	6	-2	90,631	100,000	100,000	9,369	E		
	2013 Ford E-150 Van	3	7	4	6	-1	105,127	100,000	100,000	-5,127	E		
	2013 Ford E-350 Van	6	7	4	6	-1	97,997	100,000	100,000	2,003	E		
2018 Ford Transit Van	23	2	4	6	4	26,334	100,000	100,000	73,666				

ATTACHMENT B
CONDITION ASSESSMENT OF CAPITAL ASSETS

	Type	Asset description	Location	Condition Assessment TERM Rating	FY20 Peformance Metric (under TERM 3.0)	FY Target (to be in SGR)	Notes
FACILITIES							
	FACILITIES	LAND - 401 VARR AVE, COCOA	NORTH TERMINAL	4			UPGRADES TO TRANSIT CENTER 2019
	FACILITIES	MAIN BUILDING - 401 VARR AVE, COCOA	NORTH TERMINAL	4			REPAINTED AND INTERIOR REMODELED IN 2018. AC REPLACED, ROOF RECOATED 2020.
	FACILITIES	GARAGE AND BAY - 401 VARR AVE, COCOA	NORTH TERMINAL	5			REFURBISHED IN 2017. NEW FLOOR COATING 2020.
	FACILITIES	ADMINISTRATION ADDITION - 401 VARR AVE, COCOA	NORTH TERMINAL	4			REPAINTED INSIDE AND OUT; INTERIOR REMODELED IN 2018
	FACILITIES	BUILDING MODULAR - TRAINING CENTER - 401 VARR AVE, COCOA	NORTH TERMINAL	3			REPLACED A/C UNITS IN 2017. FLOOR REPAIRS IN 2018.
	FACILITIES	PARKING LOT - 401 VARR AVE, COCOA	NORTH TERMINAL	3		FY2021	BEGAN MULTIPHASE PLAN TO REPLACE CRACKED CONCRETE. PHASE IA COMPLETED 2020.
	FACILITIES	1125 W KING ST PROPERTY - FUTURE PARKING EXPANSION	NORTH TERMINAL	1	X	FY2021	PLAN TO DEMOLISH CONDEMNED BUILDING AND CONSTRUCT PARKING LOT 2021.
	FACILITIES	FUEL ISLAND CANOPY - 401 VARR AVE, COCOA	NORTH TERMINAL	5			REPLACED IN 2017
	FACILITIES	TANK - 10,000 GAL ABOVE GROUND STORAGE TANK - DIESEL	NORTH TERMINAL	4			SAND BLASTED AND REPAINTED 2020
	FACILITIES	TANK - 1,000 GAL ABOVE GROUND STORAGE TANK - GASOLINE	NORTH TERMINAL	3		FY2021	REPAINTED 2020. CONSIDERING REPLACEMENT WITH LARGER TANK.
	FACILITIES	LAND - 460 HARBOR CITY BLVD, MELBOURNE	SOUTH TERMINAL	3			
	FACILITIES	OFFICES - 460 HARBOR CITY BLVD, MELBOURNE	SOUTH TERMINAL	4		FY2021	REFURBISHED IN 2011. REPAINTED EXTERIOR IN 2018. NEW ALARM SYSTEM 2018; INTERIOR OFFICES REMODELED 2020. NEED A/C REPAIRS.
	FACILITIES	GARAGE AND BAY - 460 HARBOR CITY BLVD, MELBOURNE	SOUTH TERMINAL	5			FINISHED COMPLETE ELECTRICAL, LIGHTING INSTALLATION, FLOOR COATING, PAINT REFURBISHMENT 2019
	FACILITIES	GARAGE/TIRE BUILDING - 460 HARBOR CITY BLVD, MELBOURNE	SOUTH TERMINAL	4			REPAINTED AND ELECTRICAL UPGRADE IN 2014
	FACILITIES	PARKING LOT - 460 HARBOR CITY BLVD, MELBOURNE	SOUTH TERMINAL	2	X	FY2021	NEEDS REPAIRS, SEAL COAT, STRIPING
	FACILITIES	FUEL ISLAND CANOPY MELBOURNE SCAT	SOUTH TERMINAL	4			REPLACED IN 2008
	FACILITIES	TANK - 10,000 GAL ABOVE GROUND STORAGE TANK - DIESEL	SOUTH TERMINAL	3			REPAINTED IN 2018
	FACILITIES	TANK - 1,000 GAL ABOVE GROUND STORAGE TANK - GASOLINE	SOUTH TERMINAL	3		FY 2022	REPAINTED IN 2018. CONSIDERING REPLACING WITH LARGER TANK.
SHELTERS							
	SHELTER	BUS SHELTER @ N. WICKHAM ROAD - EFSC	EFSC - MELBOURNE	3			INSTALLED IN 2007
	SHELTER	TRANSFER STATION - 1700 NEW HAVEN AVE, MELBOURNE - MELBOURNE SQUARE MALL	MELBOURNE MALL	4			INSTALLED IN 2014
EQUIPMENT							
	EQUIPMENT	CONSOLE SYMPHONY DISPATCH HARRIS	NORTH TERMINAL	5			INSTALLED IN 2017
	EQUIPMENT	VAULT STATIONARY GENFARE	NORTH TERMINAL	4			INSTALLED IN 2011
	EQUIPMENT	VAULT STATIONARY GENFARE	SOUTH TERMINAL	4			INSTALLED IN 2011

ATTACHMENT B
CONDITION ASSESSMENT OF CAPITAL ASSETS

	Type	Asset description	Location	Condition Assessment TERM Rating	FY20 Peformance Metric (under TERM 3.0)	FY Target (to be in SGR)	Notes
	EQUIPMENT	GENERATOR 100KW SPECTRUM - 460 HARBOR CITY BLVD, MELBOURNE	SOUTH TERMINAL	4			NEW FUEL TANK IN 2016. GEN SET REPLACED IN 2016. TRANSFER SWITCH REPLACED IN 2019
	EQUIPMENT	GENERATOR 100 KW SPECTRUM - 401 VARR AVE, COCOA	NORTH TERMINAL	3			NEW FUEL TANK IN 2008. TRANSFER SWITCH REPLACED IN 2018.
	EQUIPMENT	PLATFORM BUS LIFT STERTIL-KONI SKYLIFT - 401 VARR AVE, COCOA	NORTH TERMINAL	5			NEW LIFT IN 2017
	EQUIPMENT	PLATFORM BUS LIFT STERTIL-KONI SKYLIFT - 460 S. HARBOR CITY BLVD, MELBOURNE	SOUTH TERMINAL	5			NEW LIFT IN 2018
	EQUIPMENT	VAC & PRESSURE WASH SYSTEMS - 401 VARR AVE, COCOA	NORTH TERMINAL	5			INSTALLED IN 2017
	EQUIPMENT	VAC & PRESSURE WASH SYSTEMS - 460 S. HARBOR CITY BLVD, MELBOURNE	SOUTH TERMINAL	4			PRESSURE WASHER REPLACED IN 2018. VACUUM IS OLDER.
	EQUIPMENT	OUTSIDE LIGHTING - 401 VARR AVE, COCOA	NORTH TERMINAL	4			REPLACED WITH LED'S IN 2018
	EQUIPMENT	OUTSIDE LIGHTING - 460 HARBOR CITY BLVD, MELBOURNE	SOUTH TERMINAL	4		FY2021	INSTALLED IN 2014. NEED UPGRADES.
	EQUIPMENT	SURVEILLANCE SECURITY SYSTEM - 401 VARR AVE, COCOA	NORTH TERMINAL	3			CAMERAS INSTALLED IN 2014. BUT SOME NOT WORKING. NEEDS MAINTENANCE
	EQUIPMENT	SURVEILLANCE SECURITY SYSTEM - 460 HARBOR CITY BLVD, MELBOURNE	SOUTH TERMINAL	3		FY2021	INSTALLED IN 2014. NEED MAINTENANCE
SOFTWARE							
	SOFTWARE	SOFTWARE - TRAPEZE SOFTWARE GROUP	NORTH TERMINAL	2	X	FY2021	INSTALLED IN 2005; WILL BE REPLACED WITH NEW INTELLIGENT TRANSPORTATION SYSTEM EQUIPMENT PURCHASE

Attachment C – Performance Metric and Target Goals

ATTACHMENT C
PERFORMANCE METRIC AND TARGET GOALS

Asset Category	Asset Class	Individual Asset(s)	FY 20 Performance Metric (%)	FY 21 Target (% in SCG)	FY 22 Target (% in SCG)	FY 23 Target (% in SCG)	FY 24 Target (% in SCG)	Notes FY2021
Rolling Stock	Bus (BU) Fixed Route (43 Vehicles)	2007 35' Gillig LF	19%	18%	13%	38%	32%	Purchasing 2 new 35' Gillig LF Hybrids and 1 35' LF Trolley Retiring 1 2011 35' Gillig
		2007 40' Gillig LF						
		2011 35' Gillig LF						
		2011 40' Gillig LF						
		2013 35' Gillig LF						
		2013 40' Gillig LF						
		2015 35' Gillig LF						
		2015 40' Gillig LF						
		2016 35' Gillig LF						
		2018 30' Gillig LF						
	2020 35' Gillig LF Trolley							
	Cutaway Bus (CU) Paratransit (29 Vehicles)	2011 23' Glaval Titan II	76%	52%	28%	10%	0%	Purchasing 7 Paratransit Buses Retiring 7 Buses
		2012 23' Glaval Titan II						
		2013 28' Champion Int'l Defender						
2020 24' Ford E450 Turtletop								
2020 30' Freightliner Turtletop								
Van (VN) Volunteers in Motion (7 Vehicles)	2016 MV-1	0%	0%	0%	0%	22%	Purchasing 2 New Vans	
	2017 Dodge Grand Caravan							
Non-Revenue Service Vehicles (15 Vehicles)	2002 Ford Explorer	67%	60%	73%	81%	88%	Replace 1 Service Vehicle	
	2009 Ford Explorer							
	2009 Ford F-150 Pick-Up							
	2009 Ford E-350 Van							
	2012 Dodge Grand Caravan							
	2012 Ford E-350 Van							
	2013 Ford Escape							
	2013 Ford E-350 Van							
2013 Ford E-150 Van								
2018 Ford F-150 Pick-Up								
Agency Paratransit Vanpool Vans (39 Vehicles)	2009 Ford E-350 Van	41%	38%	40%	28%	28%	Purchasing 9 new vans Retire 9 vans	
	2010 Ford E-350 Van							
	2011 Dodge Grand Caravan							
	2011 Ford E-350 Van							
	2013 Ford E-350 Van							
	2014 Ford E-350 Van							
2018 Ford Transit Van								
Commuter Vanpool Vans (39 Vehicles)	2009 Ford E-350 Van	41%	30%	15%	0%	0%	Transition to vehicles owned by Enterprise. Started with 3 in 2020 plan to switch 6 more. Will retire corresponding number of county owned vans	
	2010 Ford E-350 Van							
	2011 Dodge Grand Caravan							
	2012 Ford E-350 Van							
	2013 Ford E-150 Van							
	2013 Ford E-350 Van							
2018 Ford Transit Van								

ATTACHMENT C
PERFORMANCE METRIC AND TARGET GOALS

Asset Category	Type	Asset description	Location	FY20 Condition Assessment TERM Rating	FY20	FY21 Target	FY22 Target	FY23 Target	FY24 Target	Notes
FACILITIES										
	FACILITIES	LAND - 401 VARR AVE, COCOA	NORTH TERMINAL	4						
	FACILITIES	MAIN BUILDING - 401 VARR AVE, COCOA	NORTH TERMINAL	4	SGR					
	FACILITIES	GARAGE AND BAY - 401 VARR AVE, COCOA	NORTH TERMINAL	5	SGR					FLOOR COATING
	FACILITIES	ADMINISTRATION ADDITION - 401 VARR AVE, COCOA	NORTH TERMINAL	4		X				INTERIOR CUBICLE REMODELING
	FACILITIES	BUILDING MODULAR - TRAINING CENTER - 401 VARR AVE, COCOA	NORTH TERMINAL	3					X	REPLACE MODULAR BUILDING WITH OFFICE BUILDING.
	FACILITIES	PARKING LOT - 401 VARR AVE, COCOA	NORTH TERMINAL	3		X				REPLACE CRACKED CONCRETE SLABS FY2020-2021.
	FACILITIES	1125 W KING ST PROPERTY - FUTURE PARKING EXPANSION	NORTH TERMINAL	1		X				PLANNED DEMOLITION OF BUILDING AND CONSTRUCT PARKING LOT FY2021.
	FACILITIES	FUEL ISLAND CANOPY - 401 VARR AVE, COCOA	NORTH TERMINAL	5						
	FACILITIES	TANK - 10,000 GAL ABOVE GROUND STORAGE TANK - DIESEL FUEL	NORTH TERMINAL	4	SGR					
	FACILITIES	TANK - 1,000 GAL ABOVE GROUND STORAGE TANK - UNLEADED GASOLINE	NORTH TERMINAL	3		X				CONSIDERING REPLACING WITH LARGER TANK
	FACILITIES	LAND - 460 HARBOR CITY BLVD, MELBOURNE	SOUTH TERMINAL	3						
	FACILITIES	OFFICES - 460 HARBOR CITY BLVD, MELBOURNE	SOUTH TERMINAL	4		X				AC REPAIRS
	FACILITIES	GARAGE AND BAY - 460 HARBOR CITY BLVD, MELBOURNE	SOUTH TERMINAL	5						
	FACILITIES	GARAGE/TIRE BUILDING - 460 HARBOR CITY BLVD, MELBOURNE	SOUTH TERMINAL	4						
	FACILITIES	PARKING LOT - 460 HARBOR CITY BLVD, MELBOURNE	SOUTH TERMINAL	2		X				PLANNED REPAIRS, SEAL COAT, STRIPING IN FY2021.
	FACILITIES	FUEL ISLAND CANOPY MELBOURNE SCAT	SOUTH TERMINAL	4						
	FACILITIES	TANK - 10,000 GAL ABOVE GROUND STORAGE TANK - DIESEL FUEL	SOUTH TERMINAL	3						
	FACILITIES	TANK - 1,000 GAL ABOVE GROUND STORAGE TANK - UNLEADED GASOLINE	SOUTH TERMINAL	3			X			CONSIDERING REPLACING WITH LARGER TANK.
SHELTERS										
	SHELTER	BUS SHELTER @ N. WICKHAM ROAD - EFSC	EFSC - MELBOURNE	3						
	SHELTER	TRANSFER STATION - 1700 NEW HAVEN AVE, MELBOURNE - MELBOURNE SQUARE MALL	MELBOURNE MALL	4						

ATTACHMENT C
PERFORMANCE METRIC AND TARGET GOALS

Asset Category	Type	Asset description	Location	FY20 Condition Assessment TERM Rating	FY20	FY21 Target	FY22 Target	FY23 Target	FY24 Target	Notes
EQUIPMENT										
	EQUIPMENT	CONSOLE SYMPHONY DISPATCH HARRIS	NORTH TERMINAL	5						
	EQUIPMENT	VAULT STATIONARY GENFARE	NORTH TERMINAL	4						
	EQUIPMENT	VAULT STATIONARY GENFARE	SOUTH TERMINAL	4						
	EQUIPMENT	GENERATOR 100KW SPECTRUM - 460 HARBOR CITY BLVD, MELBOURNE	SOUTH TERMINAL	4	SGR					
	EQUIPMENT	GENERATOR 100 KW SPECTRUM - 401 VARR AVE, COCOA	NORTH TERMINAL	3						
	EQUIPMENT	PLATFORM BUS LIFT STERTIL-KONI SKYLIFT - 401 VARR AVE, COCOA	NORTH TERMINAL	5						
	EQUIPMENT	PLATFORM BUS LIFT, STERTIL-KONI SKYLIFT - 460 S HARBOR CITY BLVD, MELBOURNE	SOUTH TERMINAL	5						
	EQUIPMENT	VAC & PRESSURE WASH SYSTEMS - 401 VARR AVE, COCOA	NORTH TERMINAL	5						
	EQUIPMENT	VAC & PRESSURE WASH SYSTEMS - 460 S. HARBOR CITY BLVD, MELBOURNE	SOUTH TERMINAL	5						
	EQUIPMENT	OUTSIDE LIGHTING - 401 VARR AVE, COCOA	NORTH TERMINAL	4						REPLACED WITH LED LIGHTING 2020
	EQUIPMENT	OUTSIDE LIGHTING - 460 HARBOR CITY BLVD, MELBOURNE	SOUTH TERMINAL	4						REPLACED WITH LED LIGHTING 2020
	EQUIPMENT	SURVEILLANCE SECURITY SYSTEM - 401 VARR AVE, COCOA	NORTH TERMINAL	3		X				SOME CAMERA UPGRADES
	EQUIPMENT	SURVEILLANCE SECURITY SYSTEM - 460 HARBOR CITY BLVD, MELBOURNE	SOUTH TERMINAL	3		X				SOME CAMERA UPGRADES
SOFTWARE										
	SOFTWARE	SOFTWARE - TRAPEZE SOFTWARE GROUP	NORTH TERMINAL	2		X				WILL BE REPLACED IN NEW ITS SYSTEM EQUIPMENT PURCHASE, PLANNED FY2021.

Attachment D – Prioritization Projects

ATTACHMENT D
PRIORITIZATION PROJECTIONS

Asset Category	Asset Class	Fleet Quantity	FY 20	FY 21	FY 22	FY 23	FY 24
Rolling Stock	Bus (BU) Fixed Route	43	8 exceeded 19%	8 exceeded 18% 3 New Buses Retire 1 Bus	6 exceeded 13% 3 New Buses Retire 2 Buses	18 exceeded 38% 4 New Buses Retire 3 Buses	15 exceeded 32% 5 New Buses Retire 5 Buses
	Cutaway Bus (CU) Paratransit	29	22 exceeded 76%	15 exceeded 52% 7 New Buses Retire 7 Buses	8 exceeded 28% 7 New Buses Retire 7 Buses	3 exceeded 10% 6 New Buses Retire 5 Buses	0 exceeded 0% 3 New Buses Retire 3 Buses
	Van (VN) Volunteers in Motion	7	0 exceeded 0%	0 exceeded 0% 2 New Vans	0 exceeded 0%	0 exceeded 0%	2 exceeded 22%
	Non-Revenue Service Vehicles	15	10 exceeded 67%	9 exceeded 60% Replace Ford Explorer	11 exceeded 73% 2 Replacement Vans	13 exceeded 81% 2 Replacement Vans	14 exceeded 88% 2 Replacement Vehicles
	Agency Paratransit Vanpool Vans	39	16 exceeded 41%	15 exceeded 38% 9 New Vans Retire 9 Vans	12 exceeded 40% Retire 9 Vans	7 exceeded 28% Retire 5 Vans	7 exceeded 28%
	Commuter Vanpool Vans	39	16 exceeded 41%	10 exceeded 30% Retire 6 vans Transition to vans owned by Enterprise (6 New Vans)	4 exceeded 15% Retire 6 Vans Replace with 6 new Enterprise Vans	0 exceeded 0% Retire 5 Vans Replace with 6 new Enterprise Vans	0 exceeded 0% Retire 4 Vans Replace with 6 new Enterprise Vans

ATTACHMENT D
PRIORITIZATION PROJECTIONS

	Type	Asset description	Location	FY20 Condition Assessment TERM Rating	FY20	FY21	FY22	FY23	FY24
FACILITIES									
	FACILITIES	LAND - 401 VARR AVE, COCOA	NORTH TERMINAL	4					
	FACILITIES	MAIN BUILDING - 401 VARR AVE, COCOA	NORTH TERMINAL	4	SGR				
	FACILITIES	GARAGE AND BAY - 401 VARR AVE, COCOA	NORTH TERMINAL	5	SGR				
	FACILITIES	ADMINISTRATION ADDITION - 401 VARR AVE, COCOA	NORTH TERMINAL	4		X			
	FACILITIES	BUILDING MODULAR - TRAINING CENTER - 401 VARR AVE, COCOA	NORTH TERMINAL	3					X
	FACILITIES	PARKING LOT - 401 VARR AVE, COCOA	NORTH TERMINAL	3		X			
	FACILITIES	1125 W KING ST PROPERTY - FUTURE PARKING	NORTH TERMINAL	1		XX			
	FACILITIES	FUEL ISLAND CANOPY - 401 VARR AVE, COCOA	NORTH TERMINAL	5					
	FACILITIES	TANK - 10,000 GAL ABOVE GROUND STORAGE TANK	NORTH TERMINAL	4	SGR				
	FACILITIES	TANK - 1,000 GAL ABOVE GROUND STORAGE TANK	NORTH TERMINAL	3		X			
	FACILITIES	LAND - 460 HARBOR CITY BLVD, MELBOURNE	SOUTH TERMINAL	3					
	FACILITIES	OFFICES - 460 HARBOR CITY BLVD, MELBOURNE	SOUTH TERMINAL	4		X			
	FACILITIES	GARAGE AND BAY - 460 HARBOR CITY BLVD, MELBOURNE	SOUTH TERMINAL	5					
	FACILITIES	GARAGE/TIRE BUILDING - 460 HARBOR CITY BLVD, MELBOURNE	SOUTH TERMINAL	4					
	FACILITIES	PARKING LOT - 460 HARBOR CITY BLVD, MELBOURNE	SOUTH TERMINAL	2		X			
	FACILITIES	FUEL ISLAND CANOPY MELBOURNE SCAT	SOUTH TERMINAL	4					
	FACILITIES	TANK - 10,000 GAL ABOVE GROUND STORAGE TANK - DIESEL FUEL	SOUTH TERMINAL	3					
	FACILITIES	TANK - 1,000 GAL ABOVE GROUND STORAGE TANK - UNLEADED GASOLINE	SOUTH TERMINAL	3			X		
SHELTERS									
	SHELTER	BUS SHELTER @ N. WICKHAM ROAD - EFSC	EFSC - MELBOURNE	3					
	SHELTER	TRANSFER STATION - 1700 NEW HAVEN AVE, MELBOURNE - MELBOURNE SQUARE MALL	MELBOURNE MALL	4					
EQUIPMENT									
	EQUIPMENT	CONSOLE SYMPHONY DISPATCH HARRIS	NORTH TERMINAL	5					
	EQUIPMENT	VAULT STATIONARY GENFARE	NORTH TERMINAL	4					
	EQUIPMENT	VAULT STATIONARY GENFARE	SOUTH TERMINAL	4					
	EQUIPMENT	GENERATOR 100KW SPECTRUM - 460 HARBOR CITY BLVD, MELBOURNE	SOUTH TERMINAL	4	SGR				
	EQUIPMENT	GENERATOR 100 KW SPECTRUM - 401 VARR AVE, COCOA	NORTH TERMINAL	3					
	EQUIPMENT	PLATFORM BUS LIFT STERTIL-KONI SKYLIFT - 401 VARR AVE, COCOA	NORTH TERMINAL	5					
	EQUIPMENT	PLATFORM BUS LIFT, STERTIL-KONI SKYLIFT - 460 S HARBOR CITY BLVD, MELBOURNE	SOUTH TERMINAL	5					

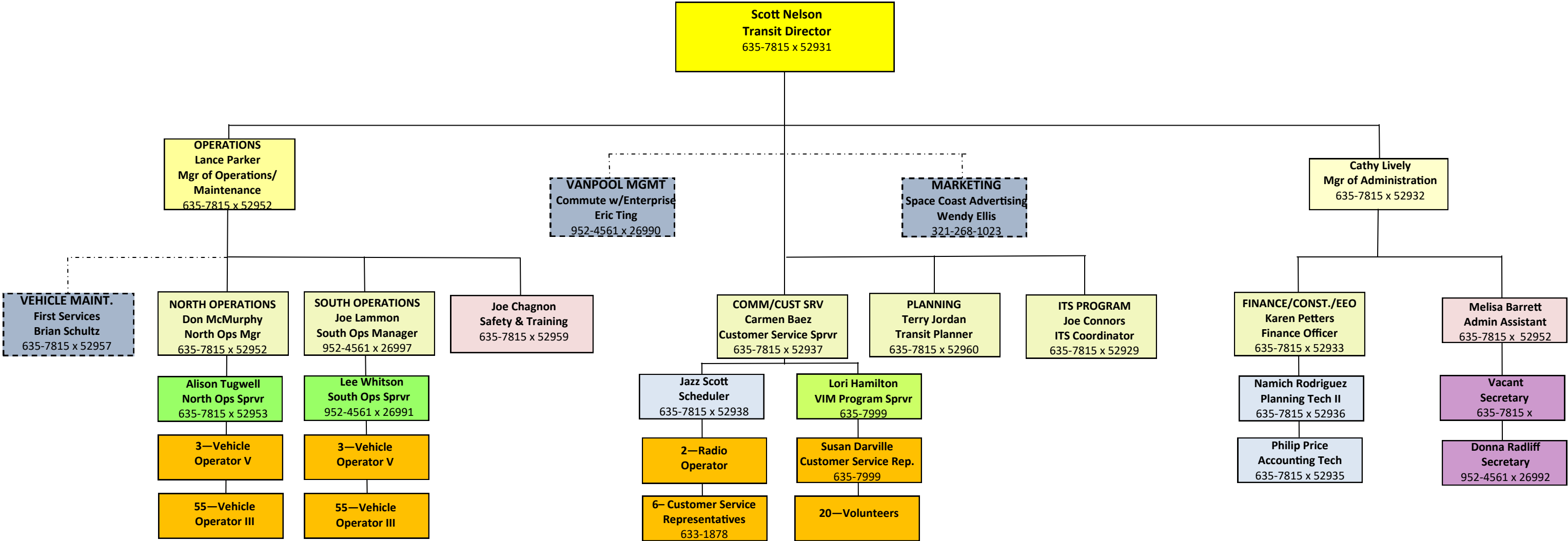
ATTACHMENT D
PRIORITIZATION PROJECTIONS

	Type	Asset description	Location	FY20 Condition Assessment TERM Rating	FY20	FY21	FY22	FY23	FY24
	EQUIPMENT	VAC & PRESSURE WASH SYSTEMS - 401 VARR AVE, COCOA	NORTH TERMINAL	5					
	EQUIPMENT	VAC & PRESSURE WASH SYSTEMS - 460 S HARBOR CITY BLVD, MELBOURNE	SOUTH TERMINAL	5					
	EQUIPMENT	OUTSIDE LIGHTING - 401 VARR AVE, COCOA	NORTH TERMINAL	4					
	EQUIPMENT	OUTSIDE LIGHTING - 460 HARBOR CITY BLVD, MELBOURNE	SOUTH TERMINAL	4					
	EQUIPMENT	SURVEILLANCE SECURITY SYSTEM - 401 VARR AVE, COCOA	NORTH TERMINAL	3		X			
	EQUIPMENT	SURVEILLANCE SECURITY SYSTEM - 460 HARBOR CITY BLVD, MELBOURNE	SOUTH TERMINAL	3		X			
SOFTWARE									
	SOFTWARE	SOFTWARE - TRAPEZE SOFTWARE GROUP	NORTH TERMINAL	2		X			

XX= HIGHER PRIORITY

Appendix A – Organizational Charts

Transit Services Department



CITIZENS OF BREVARD COUNTY

COMMISSIONERS

RITA PRITCHETT, DISTRICT 1
 BRYAN LOBER, DISTRICT 2
 JOHN TOBIA, DISTRICT 3
 CURT SMITH, DISTRICT 4
 KRISTINE ISNARDI, DISTRICT 5

(607-6901) TITUSVILLE
 (454-6601) MERRITT ISLAND
 (633-2075) PALM BAY
 (633-2044) VIERA
 (253-6611) PALM BAY

COUNTY MANAGER
FRANK ABBATE
 633-2001

COUNTY ATTORNEY
 Eden Bentley
 633-2090

COURT ADMINISTRATOR
 MARK VAN BEVER
 633-2171
 JC-Viera

CLERK OF THE CIRCUIT COURT
 SCOTT ELLIS
 637-2017
 BC GC-N

STATE ATTORNEY
 PHIL ARCHER
 617-7510
 GC-Viera

PUBLIC DEFENDER
 BLAISE TRETTIS
 617-7373
 GC-Viera

CLERK TO THE BOARD
 Kimberly Powell
 637-2001
 BC GC-N

FINANCE DEPARTMENT
 STEVE BURDETT
 637-2002
 BC GC-N

DEVELOPMENT & ENVIRONMENTAL SERVICES GROUP
JOHN DENNINGHOFF
 ASSISTANT COUNTY MANAGER
 633-2002

SUPPORT SERVICES GROUP
FRANK ABBATE
 COUNTY MANAGER
 633-2001

PUBLIC SAFETY GROUP
MATTHEW WALLACE, PUBLIC SAFETY DIRECTOR
 637-5390

COMMUNITY SERVICES GROUP
JIM LIESENFELT
 ASSISTANT COUNTY MANAGER
 633-2003

MOSQUITO CONTROL
 Joseph Faella, Director
 264-5032

NATURAL RESOURCES MANAGEMENT
 Virginia Barker, Director
 633-2016

BUDGET OFFICE
 Jill Hayes, Director
 633-2153

FIRE RESCUE
 Mark Schollmeyer, Fire Chief
 633-2056

HOUSING & HUMAN SERVICES
 Ian Golden, Director
 633-2007

LIBRARY SERVICES
 Jeff Thompson, Director
 633-1801

PLANNING & DEVELOPMENT
 Tad Calkins, Director
 633-2070

PUBLIC WORKS
 Marc Bemath, Director
 617-7202

CENTRAL SERVICES
 Steven Darling, Director
 637-5492

EMERGENCY MANAGEMENT
 John Scott, Interim Director
 637-6670

PARKS & RECREATION
 Mary Ellen Donner, Director
 633-2046

TOURISM DEVELOPMENT
 Peter Cranis, Director
 433-4470

SOLID WASTE MANAGEMENT
 Euripides Rodriguez, Director
 633-2042

UTILITY SERVICES
 Edward Fontanin, Director
 633-2091

COMMUNICATIONS/SCGTV
 Don Walker, Director
 690-6843

MEDICAL EXAMINER
 Sajid Qaiser, MD
 633-1981

TRANSIT SERVICES
 Scott Nelson, Director
 635-7815

UNIVERSITY OF FLORIDA/ EXTENSION SERVICES
 Beth Shephard, Director
 633-1702

VALKARIA AIRPORT
 Steve Borowski, Manager
 952-4590

HUMAN RESOURCES
 Jerry Visco, Director
 633-2034

PUBLIC SAFETY OFFICE
 Matthew Wallace, Director
 637-5390

INFORMATION TECHNOLOGY
 Jeff McKnight, Director
 617-7395