

Indialantic

Population: 2,804

Source: 2013-2017 American Community Survey 5-Year Estimates



25%

Residents under 18



19%

Residents above 65



3%

Households with no car



0

Public & Charter Schools



5

Parks



Sidewalks

3

Miles of Existing

2

Miles of Prioritized

Miles



Trails

James H. Nance Park
A1A Urban Trail



0

Bus Stops without Sidewalk Connection

Major Employers

- Raytheon Cyber Solutions, Inc.
- Belleair East Health Care Center
- Crown Plaza

Major Destinations

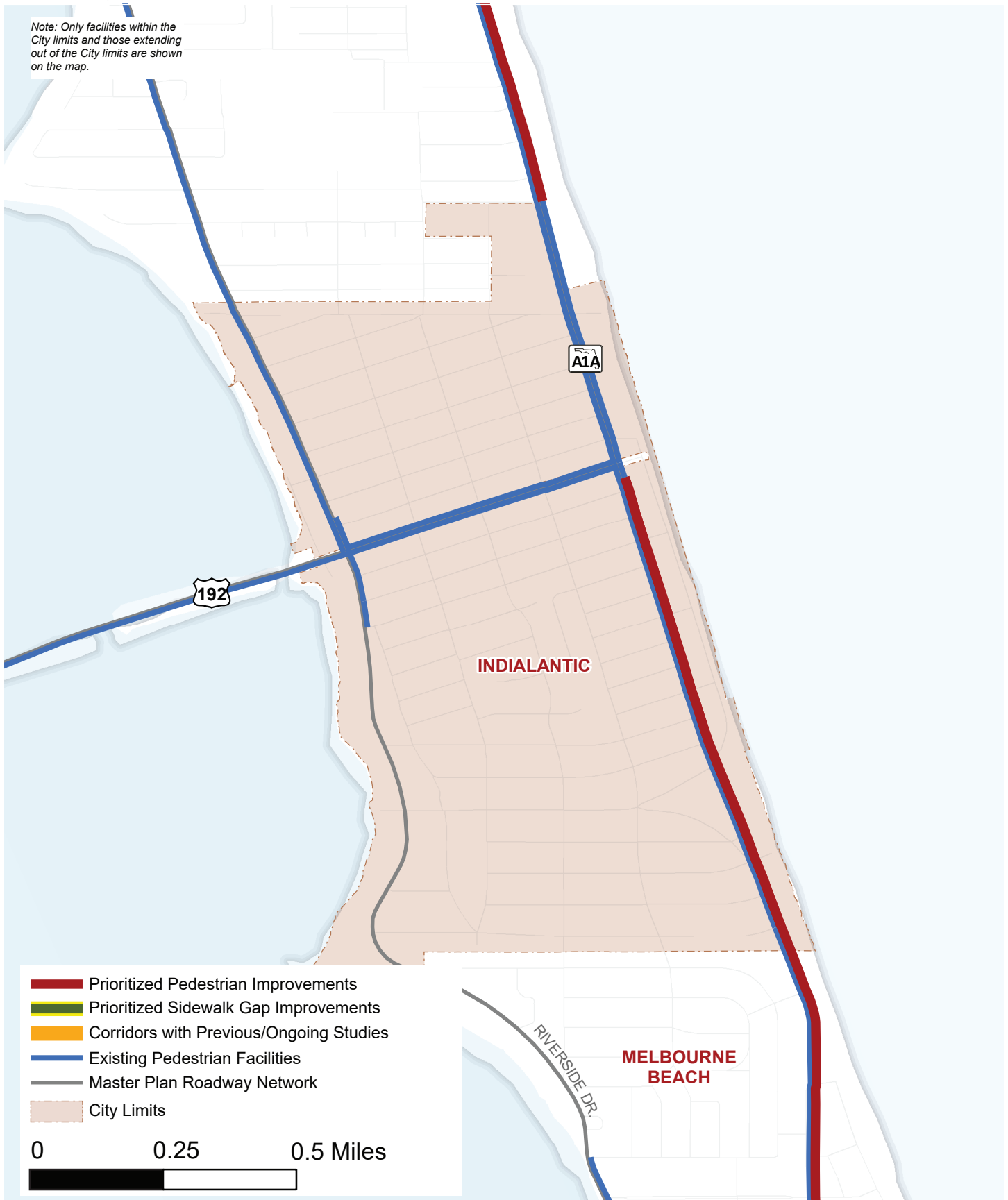
- Beach Access
- Riverside Park
- Sea Turtle Preservation Society



Indialantic

Prioritized Pedestrian Improvements

Note: Only facilities within the City limits and those extending out of the City limits are shown on the map.

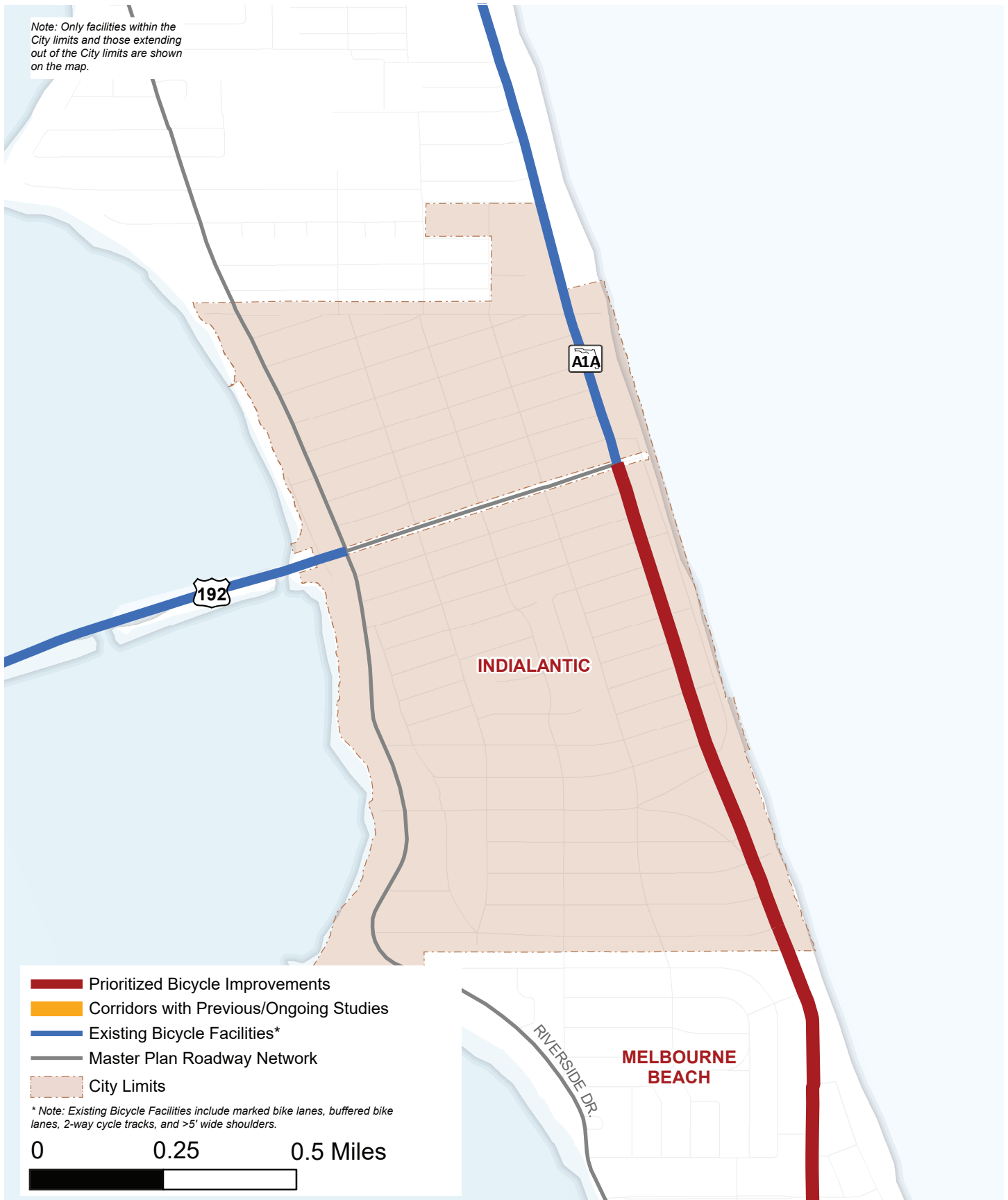




Indialantic

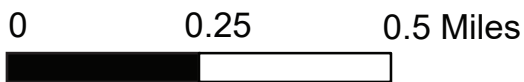
Prioritized Bicycle Improvements

Note: Only facilities within the City limits and those extending out of the City limits are shown on the map.



- Prioritized Bicycle Improvements
- Corridors with Previous/Ongoing Studies
- Existing Bicycle Facilities*
- Master Plan Roadway Network
- City Limits

* Note: Existing Bicycle Facilities include marked bike lanes, buffered bike lanes, 2-way cycle tracks, and >5' wide shoulders.





Indialantic
**Prioritized Bicycle & Pedestrian
 Improvements**

Sidewalk Gap List

Road Name	Start Point of Pedestrian Improvement	End Point of Pedestrian Improvement	Previous Study
N/A	N/A	N/A	N/A

Top Ranked Prioritized Pedestrian Improvements

Road Name	Start Point of Pedestrian Improvement	End Point of Pedestrian Improvement	Previous Study
SR A1A*	Avenue B	US 192 (5th Avenue)	N/A

* Note: Corridor is identified as a part of the primary East Coast Greenway alignment

Top Ranked Prioritized Bicycle Improvements

Road Name	Start Point of Bicycle Improvement	End Point of Bicycle Improvement	Previous Study
SR A1A	Ocean Avenue	US 192 (5th Avenue)	N/A