

SCHOOL ROUTES ANALYSIS

ROY ALLEN ELEMENTARY SCHOOL

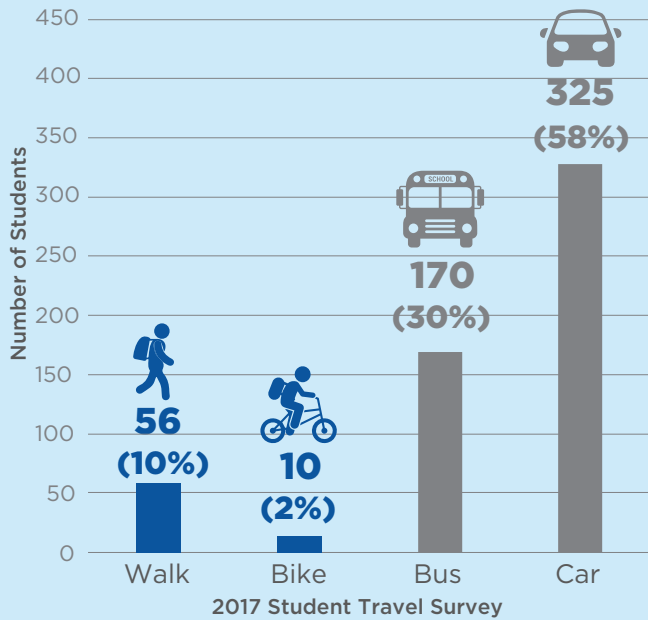


GRAPHICAL SUMMARY REPORT

JULY 2020



Student Travel Modes (2017)



Total Bicycle & Pedestrian Crashes within Study Area

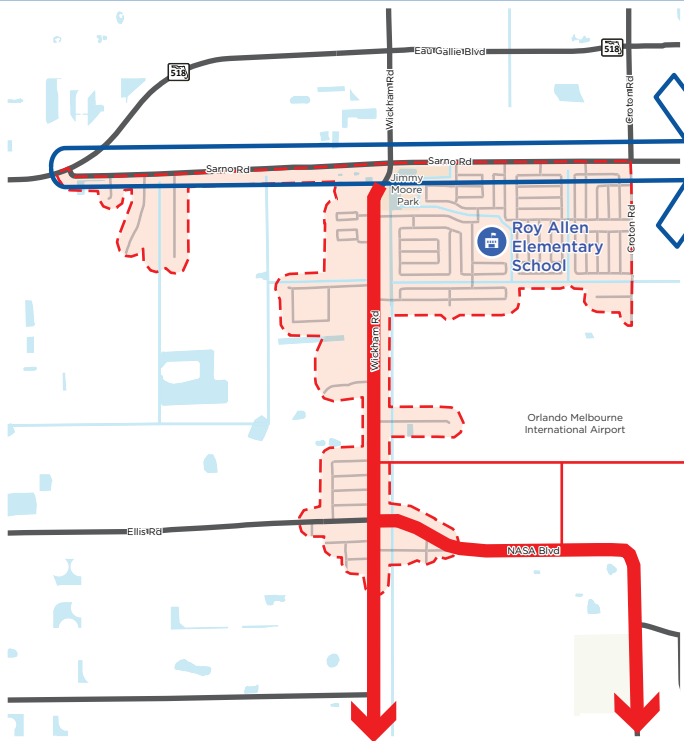


School Aged Bicycle & Pedestrian Crashes within Study Area



2014 to 2018 Crashes from University of Florida's Signal Four Analytics Database

Signals and Crossings within Study Area



Previous & Ongoing Plans

Sarno Road Corridor Study (2018)

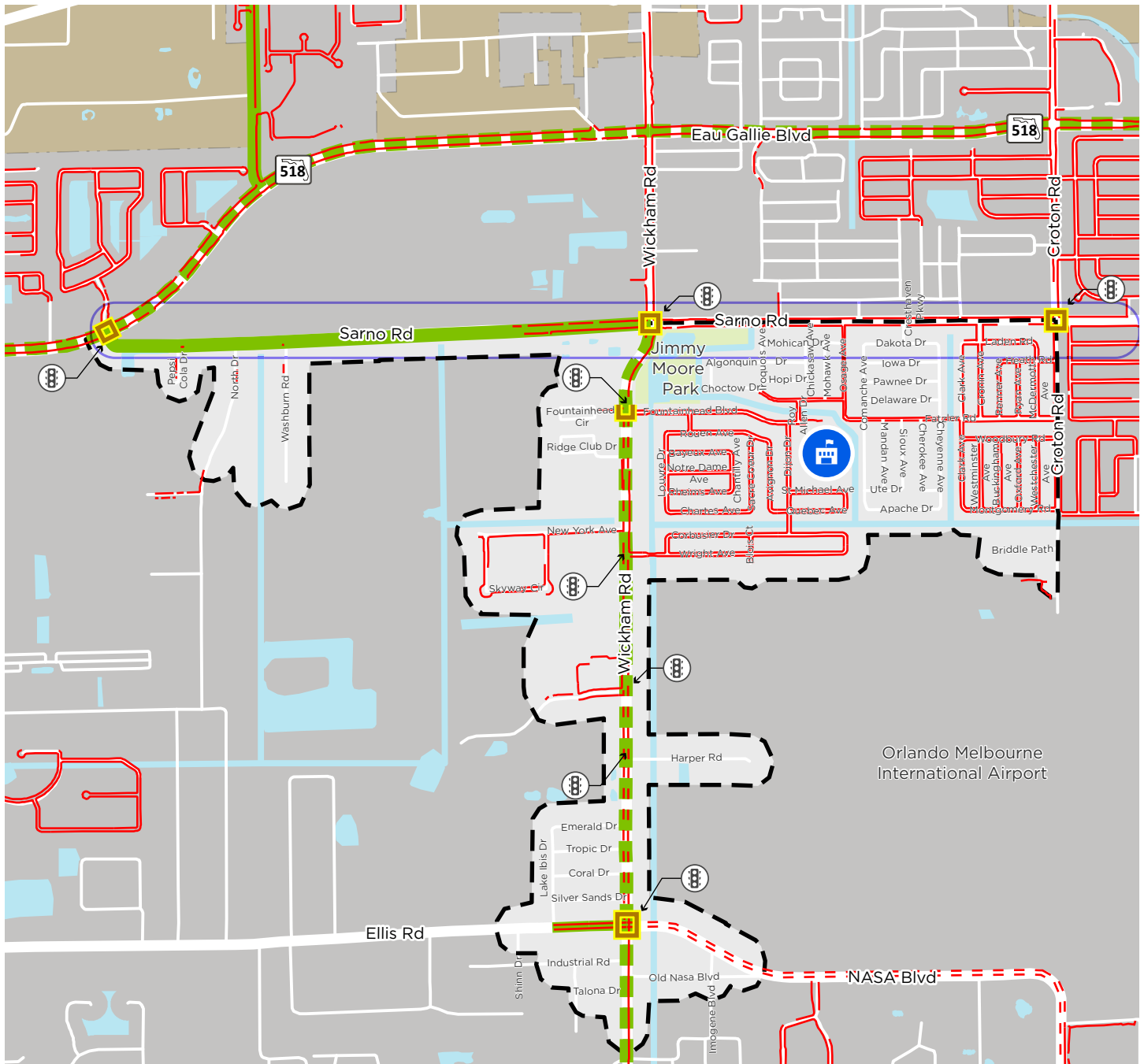
- Reconstruct sidewalks from Wickham Road to US 1 to 8' where possible (both sides of roadway).
- Construct 8' wide sidewalks along Sarno Road from Eau Gallie Boulevard to Wickham Road (both sides of roadway).
- Construct a five-lane urban roadway section from Croton Road to Apollo Boulevard.
- Develop a comprehensive landscaping plan.

Bicycle & Pedestrian Master Plan (Ongoing)

- Bicycle Facilities and Sidewalks prioritized along Wickham Road.
- Sidewalks prioritized along NASA Boulevard.

Figure 1: Background Information

School Routes Analysis
Roy Allen Elementary School



- | | | | | | | | |
|--|--|--|---|--|-----------------------------------|--|-------------------------------|
| | Roy Allen Elementary School | | Marked Crosswalks across Major Streets | | Study Area | | City of Melbourne |
| | Existing Sidewalk | | Existing Bicycle Facilities* | | Sarno Road Corridor Study | | Unincorporated Brevard County |
| | Prioritized Sidewalk (As per Draft Bicycle & Pedestrian Master Plan) | | Prioritized Bicycle Facilities* (As per Draft Bicycle & Pedestrian Master Plan) | | Traffic Signals within Study Area | | |

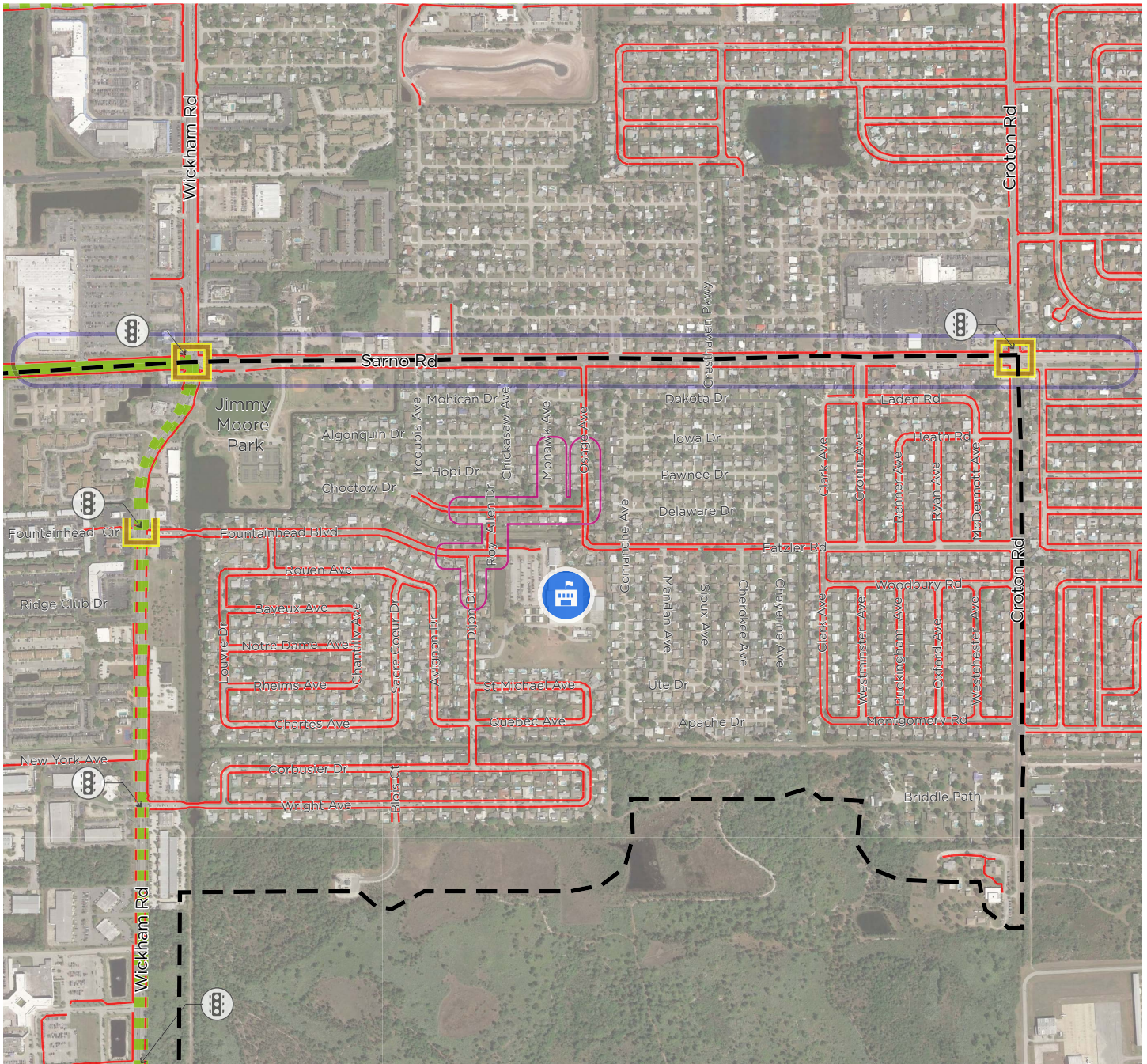
* Note: Existing Bicycle Facilities include marked bike lanes, buffered bike lanes, 2-way cycle tracks, and $\geq 5'$ wide shoulders. Draft Bicycle and Pedestrian Master Plan does not identify specific bicycle facility types for Prioritized Bicycle Facilities.



Figure 2: Existing and Planned Bicycle and Pedestrian Facilities



School Routes Analysis
Roy Allen Elementary School



Roy Allen Elementary School



Existing Sidewalk



Prioritized Sidewalk
(As per Draft Bicycle & Pedestrian Master Plan)




Marked Crosswalks
across Major Streets




Traffic Signals within
Study Area

 Existing Bicycle Facilities*

 Prioritized Bicycle Facilities*
(As per Draft Bicycle & Pedestrian Master Plan)

* Note: Existing Bicycle Facilities include marked bike lanes, buffered bike lanes, 2-way cycle tracks, and $\geq 5'$ wide shoulders. Draft Bicycle and Pedestrian Master Plan does not identify specific bicycle facility types for Prioritized Bicycle Facilities.

 Sarno Road Corridor Study

 School Zone

 Study Area



Figure 3: Existing Conditions School Context Aerial Map

School Routes Analysis
Roy Allen Elementary School

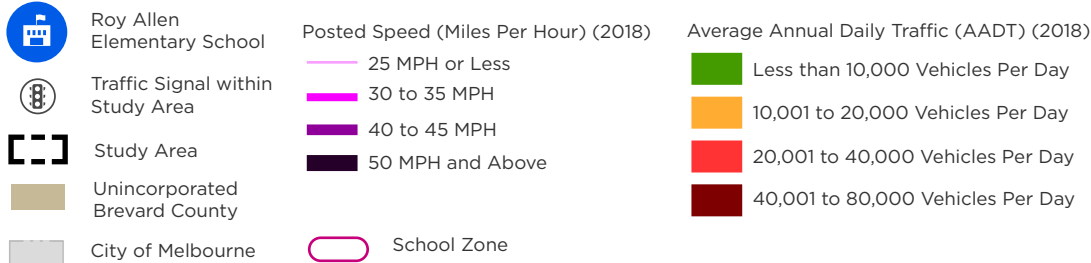
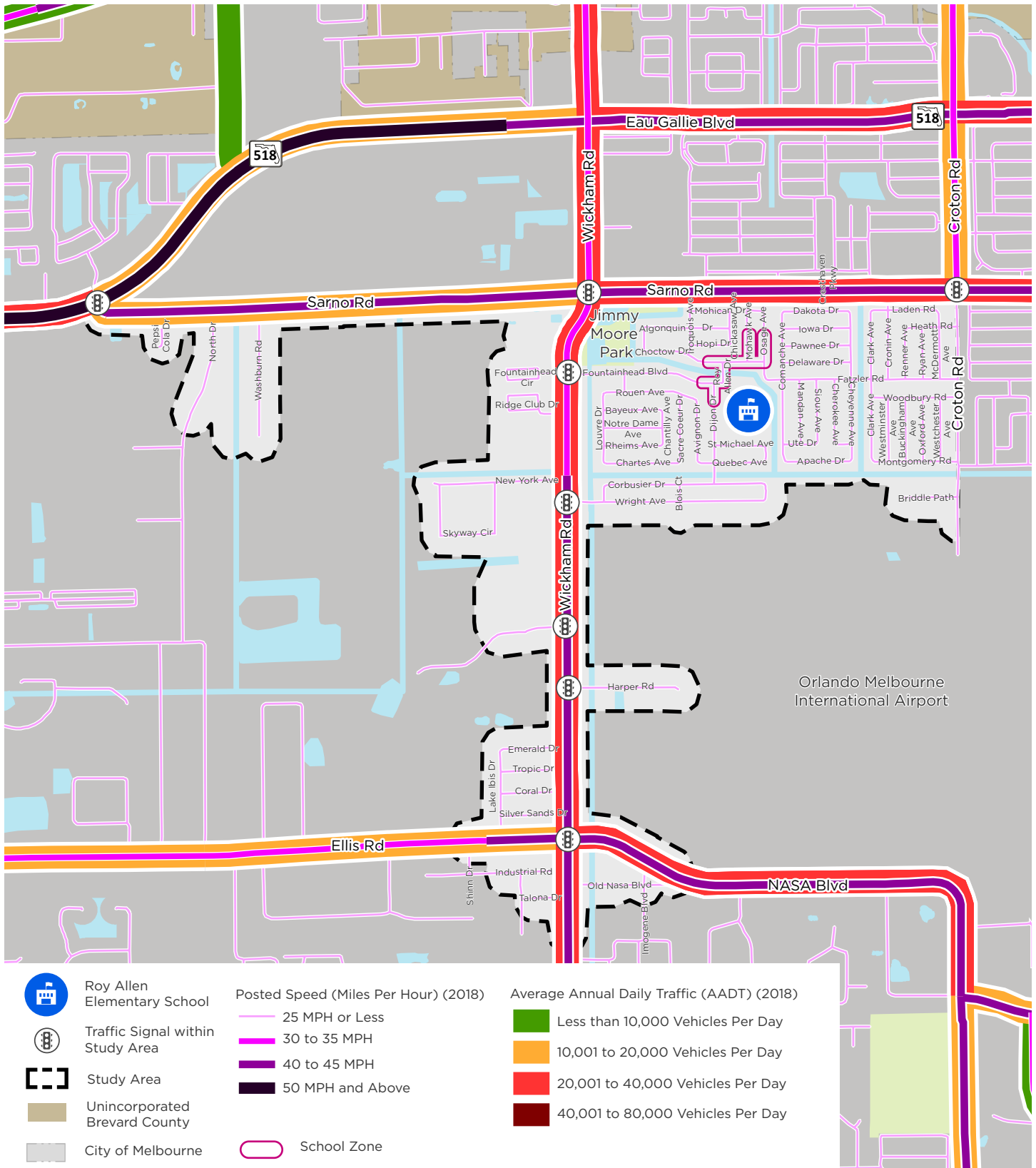
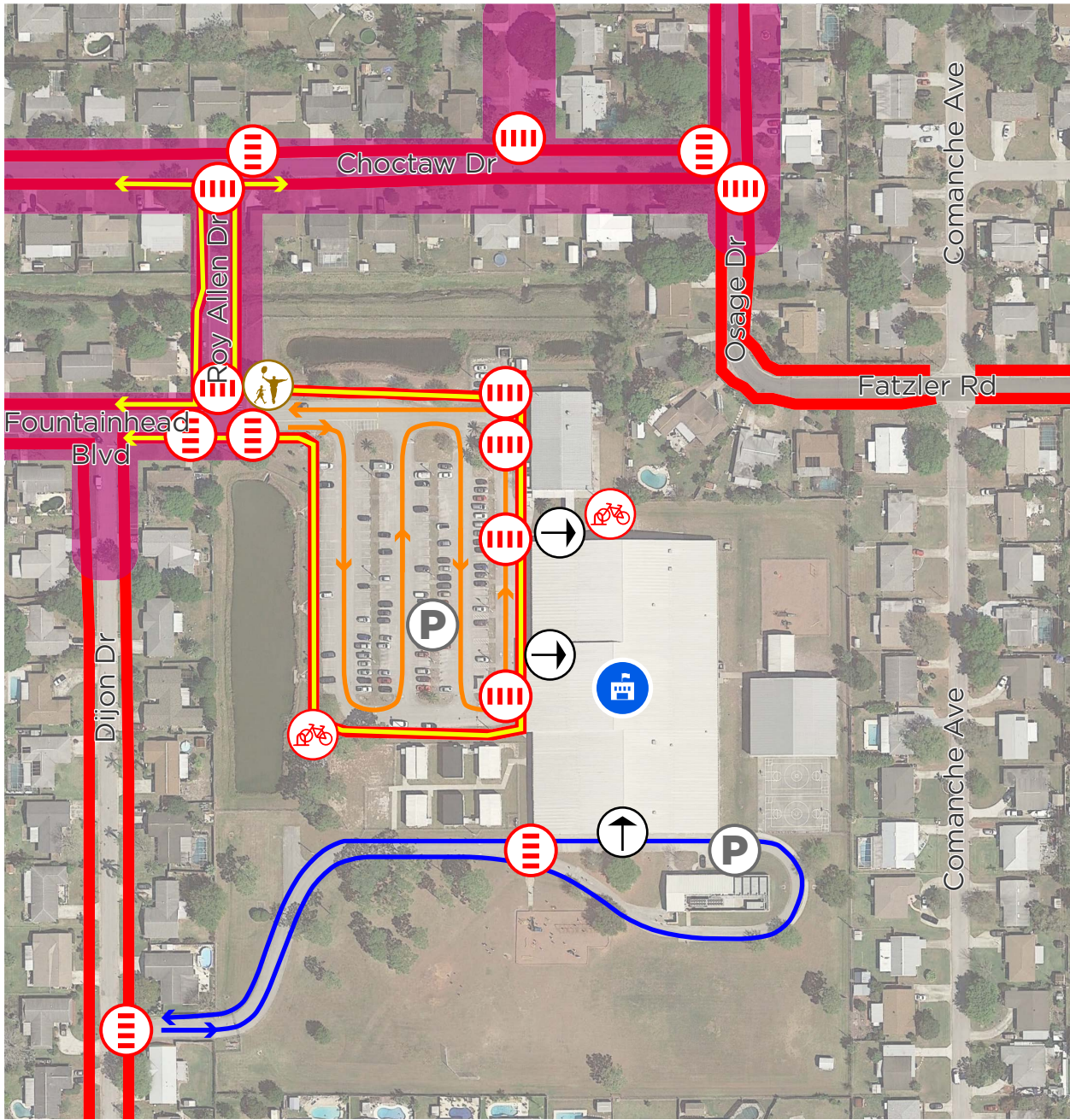


Figure 4: Existing Conditions Traffic Data
 School Routes Analysis
Roy Allen Elementary School














- | | | |
|---|---|--|
|  Roy Allen Elementary School |  Bike Parking | Circulation Patterns |
|  Marked Crosswalks |  Car Parking |  Walkers/Bikers |
|  School Building Entrance |  School Zone |  School Bus Loop |
|  Teacher Crossing Guard Location |  Existing Sidewalk |  Parent Drop-Off/Pick-Up Loop |



Figure 5: Existing School Circulation Map
 School Routes Analysis
Roy Allen Elementary School

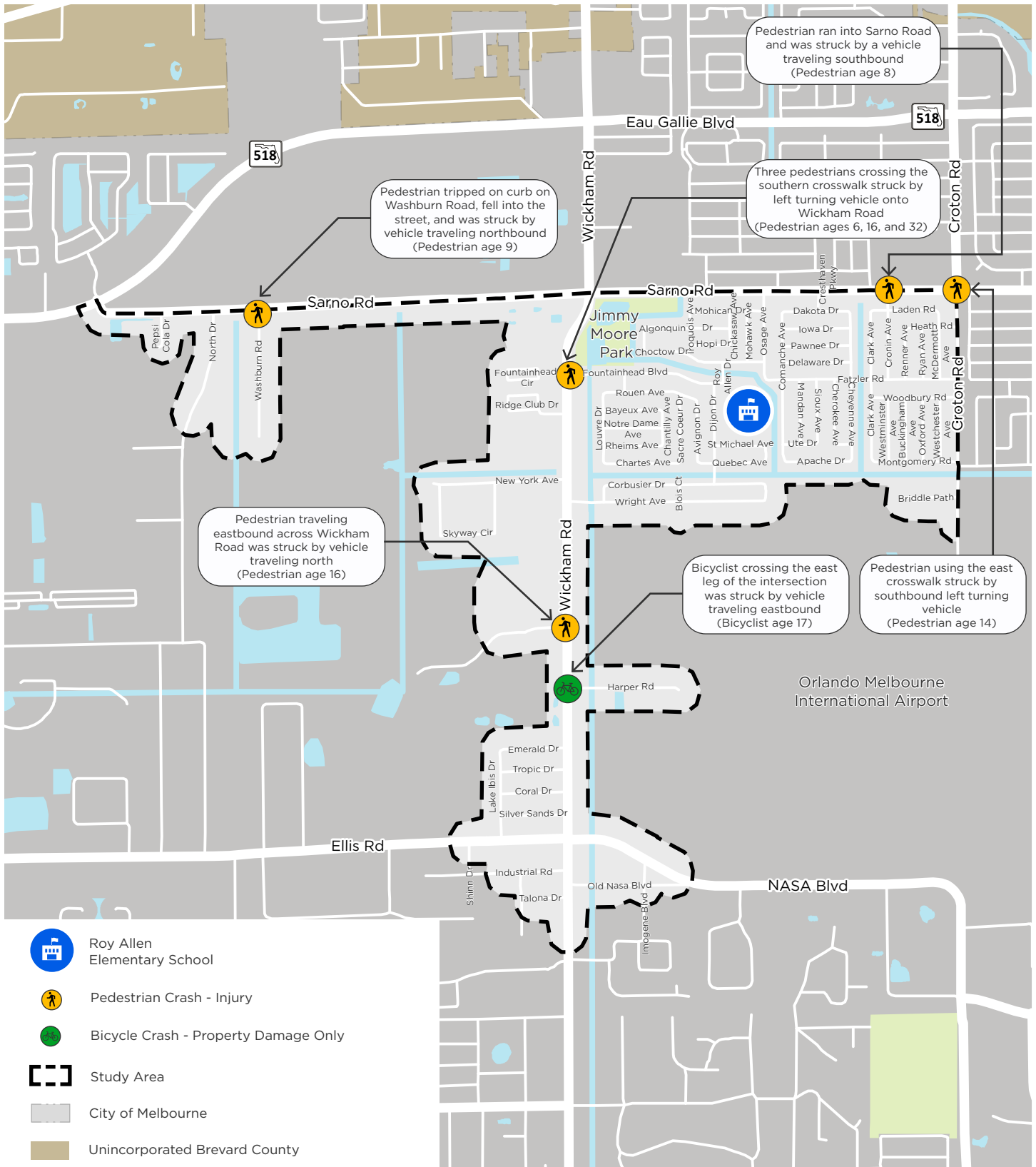


Figure 6: Bicycle and Pedestrian Crashes (2014 - 2018)

School Campus Recommendations

No.	Location	Recommendation	Type	Time-Frame	Cost Estimate
1	School Campus	Re-stripe faded crosswalks as high visibility crosswalks.	Crossing	Maintenance	<\$10,000
2	School Campus	Install signs for Drop-Off/Pick-Up loop.	School Circulation	Near-Term	\$10,000 to \$15,000

Study Area Recommendations

No.	Location	Recommendation	Type	Time-Frame	Cost Estimate
3	Canal between Choctaw Drive and Fountainhead Boulevard	Conduct a feasibility study to add a paved trail connecting Jimmy Moore Park and Roy Allen Elementary School.	Feasibility Study (Trail)	Near-Term	Further study is required
4	Iroquois Avenue from Choctaw Drive to Sarno Road	Build 5 to 6 foot wide sidewalks on both sides.	Sidewalk	Near-Term	\$115,000 to \$130,000
5	Fountainhead Boulevard from Wickham Road to Roy Allen Elementary School	Install traffic calming devices such as speed cushions, curb extensions, speed humps etc.	Traffic Calming	Near-Term	Further study is required
6	Fatzler Road from Osage Avenue to Croton Road	Install traffic calming devices such as speed cushions, curb extensions, speed humps etc.	Traffic Calming	Near-Term	Further study is required
7	Fatzler Road from Osage Avenue to Croton Road	Conduct a feasibility study to evaluate adding bike lanes and/or wider sidewalks	Feasibility Study (Bike Lanes/ Sidewalks)	Near-Term	Further study is required

Recommendations Table

School Routes Analysis Roy Allen Elementary School



Study Area Recommendations

No.	Location	Recommendation	Type	Time-Frame	Cost Estimate
8	Osage Avenue from Fatzler Road to Sarno Road	Install traffic calming devices such as speed cushions, curb extensions, speed humps, etc.	Traffic Calming	Near-Term	Further study is required
9	Dijon Drive from Corbusier Drive to Fountainhead Boulevard	Install traffic calming devices such as speed cushions, curb extensions, speed humps etc.	Traffic Calming	Near-Term	Further study is required
10	Canals south of Chartres Avenue, Quebec Avenue, Apache Drive, Montgomery Road, and between Cheyenne Avenue and Clark Avenue	Conduct a feasibility study to add paved trails along the canal ROWs.	Feasibility Study (Trail)	Near-Term	Further study is required
11	Fountainhead Boulevard and Roy Allen Drive	Add a crossing guard.	Crossing	Near-Term	Coordinate staffing
12	Fountainhead Boulevard and Roy Allen Drive	Install raised crosswalks or raised intersection or re-stripe as high visibility crosswalk markings and upgrade pedestrian ramps to make them ADA compliant.	Crossing	Long-Term	\$10,000 to \$100,000
13	School Zone	Evaluate existing extents of the school zone and re-sign new school zone	Sign/Signal	Near-Term	Further study is required
14	School Zone	Install flashing beacons for school zone reduced speed sign.	Sign/Signal	Near-Term	\$10,000 to \$15,000

Recommendations Table (Continued)

School Routes Analysis Roy Allen Elementary School



Study Area Recommendations

No.	Location	Recommendation	Type	Time-Frame	Cost Estimate
15	Wickham Road	Fill in gaps with 5 to 6 foot wide sidewalks on both sides.	Sidewalk	Long-Term	\$800,000 to \$925,000
16	Loop - Cresthaven Parkway, Dakota Drive, Comanche Avenue, Cheyenne Avenue, Apache Drive	Build a 5 to 6 foot wide sidewalks on both sides.	Sidewalk	Long-Term	\$815,000 to \$950,000

Recommendations Table (Continued)

School Routes Analysis
Roy Allen Elementary School



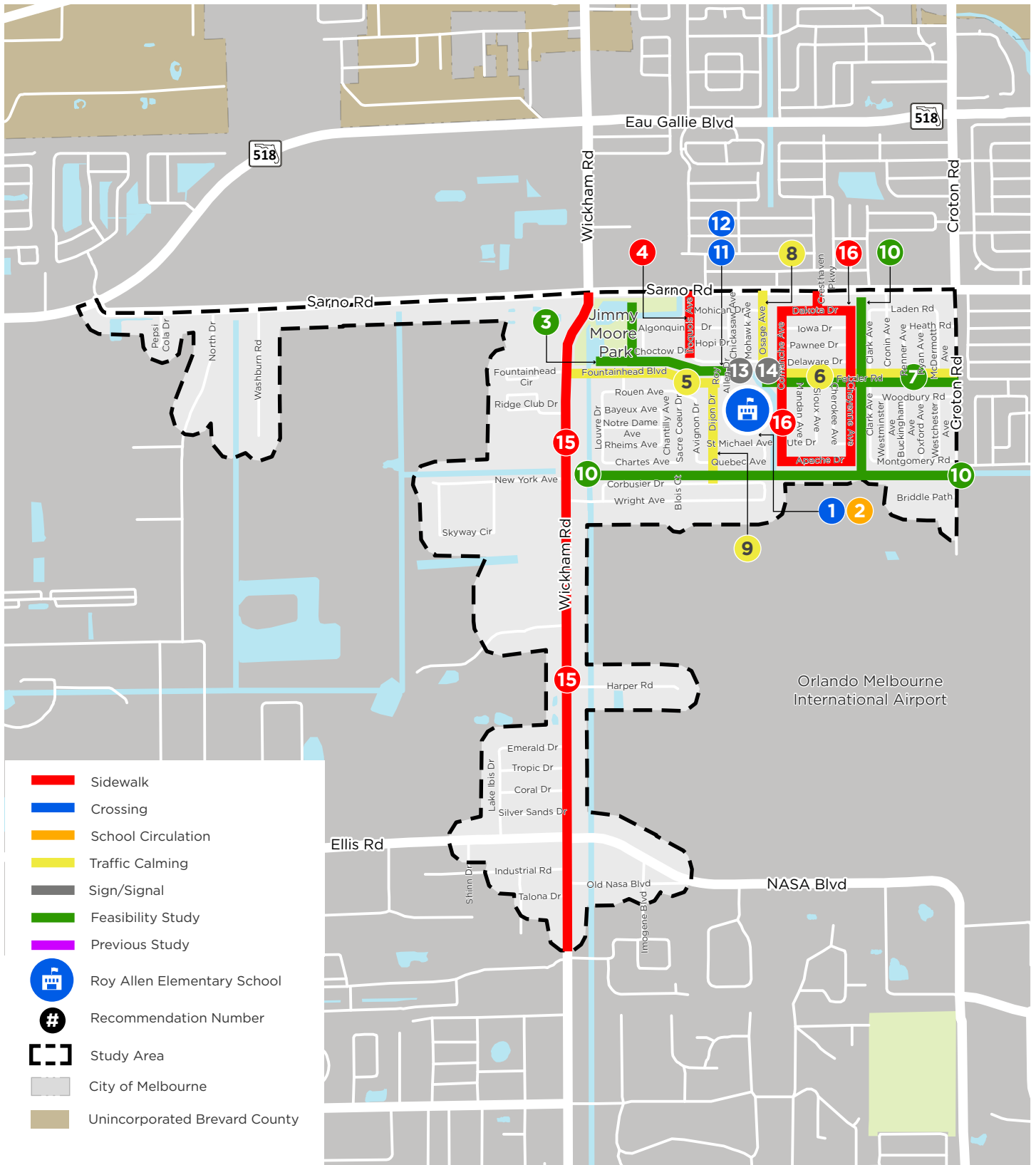
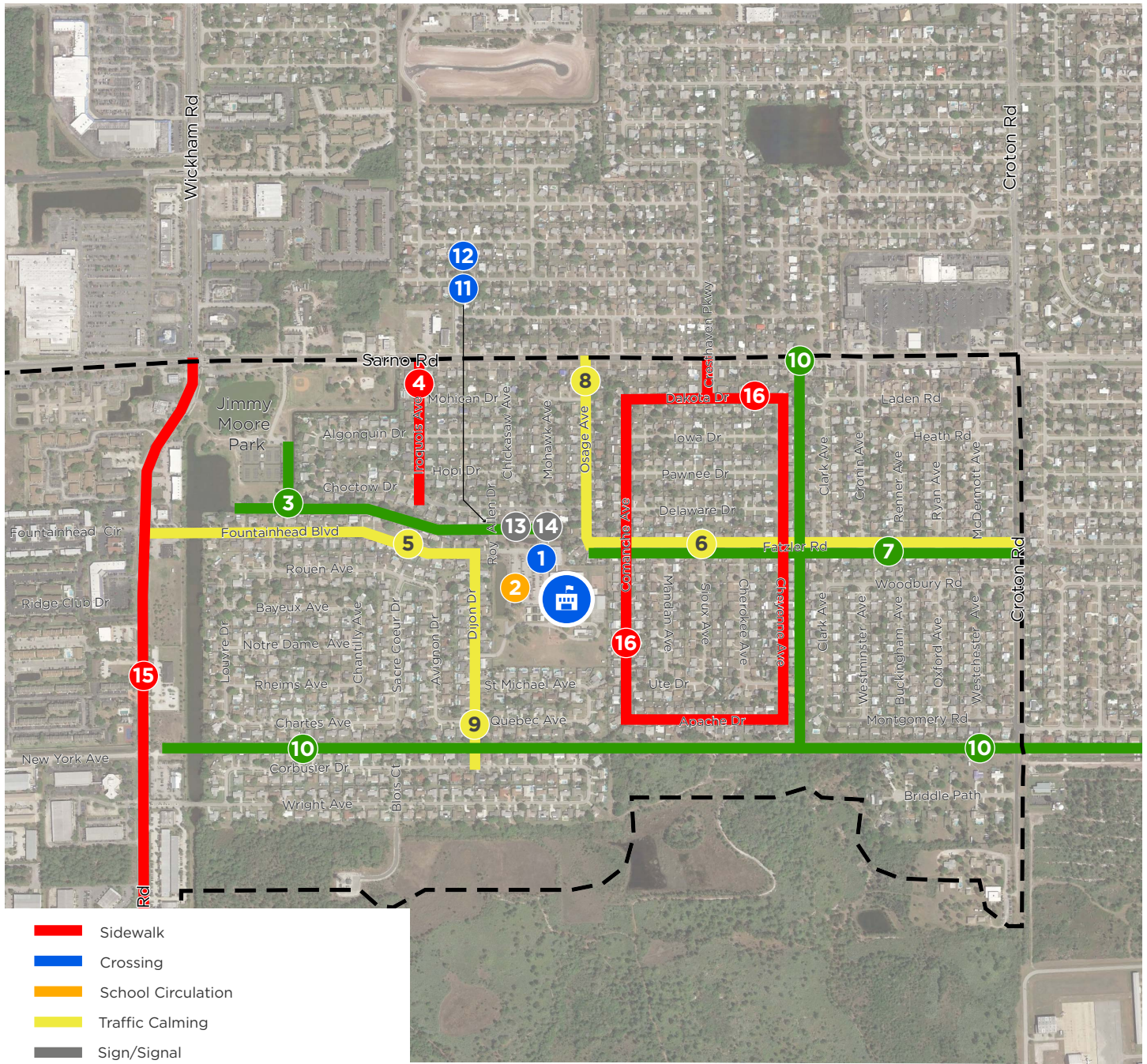


Figure 7: Recommendations

School Routes Analysis
Roy Allen Elementary School





- █ Sidewalk
- █ Crossing
- █ School Circulation
- █ Traffic Calming
- █ Sign/Signal
- █ Feasibility Study
- █ Previous Study
- Ⓛ Roy Allen Elementary School
- # Recommendation Number
- Study Area



Figure 8: Recommendations School Context Aerial Map

School Routes Analysis
Roy Allen Elementary School

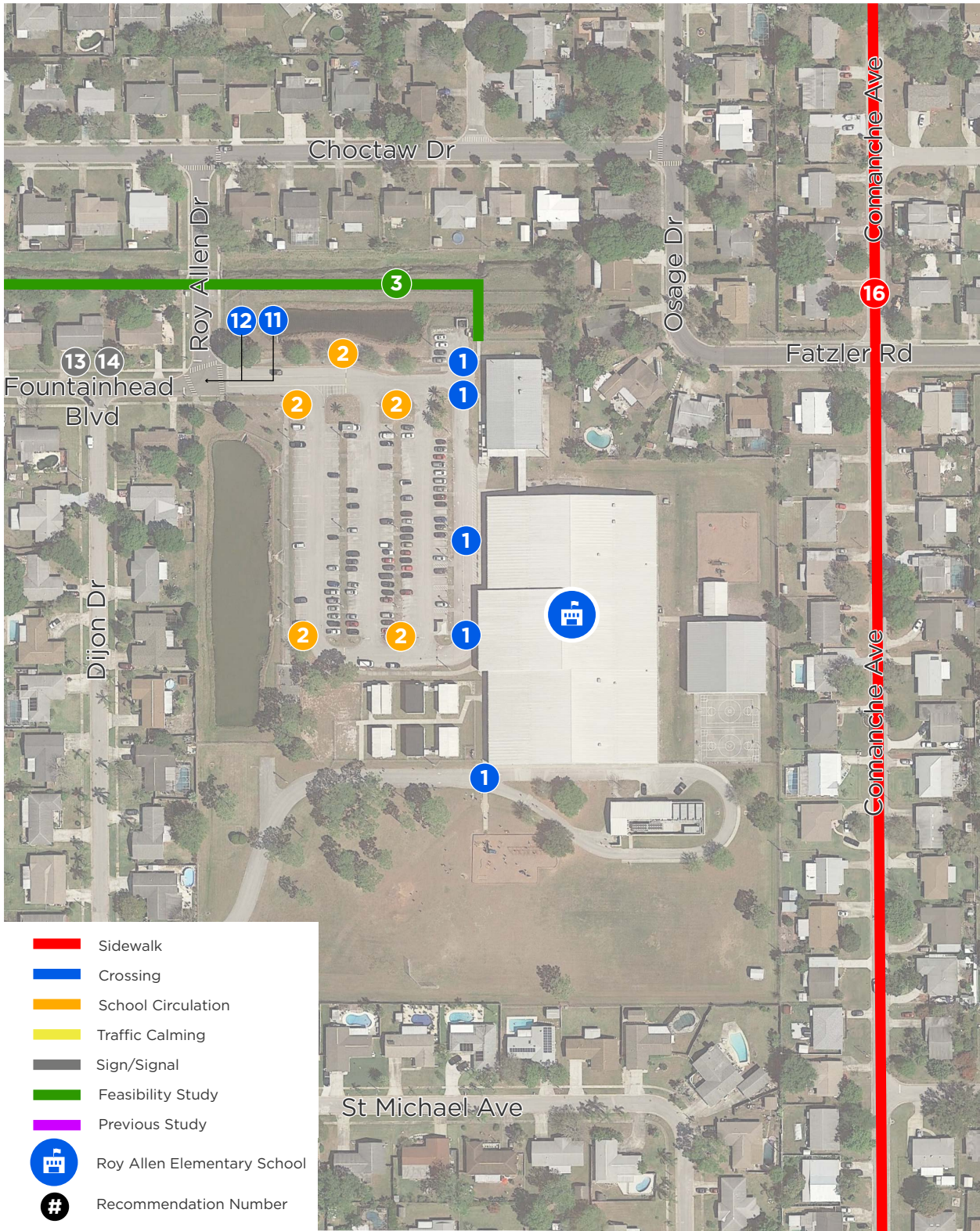


Figure 9: Recommendations School Campus Aerial Map

School Routes Analysis
Roy Allen Elementary School

Prepared For:



2725 Judge Fran Jamieson Way,
Bldg. B, Room 105,
Melbourne, FL 32940

Prepared By:



225 E Robinson Street,
Suite 355,
Orlando, FL 32801