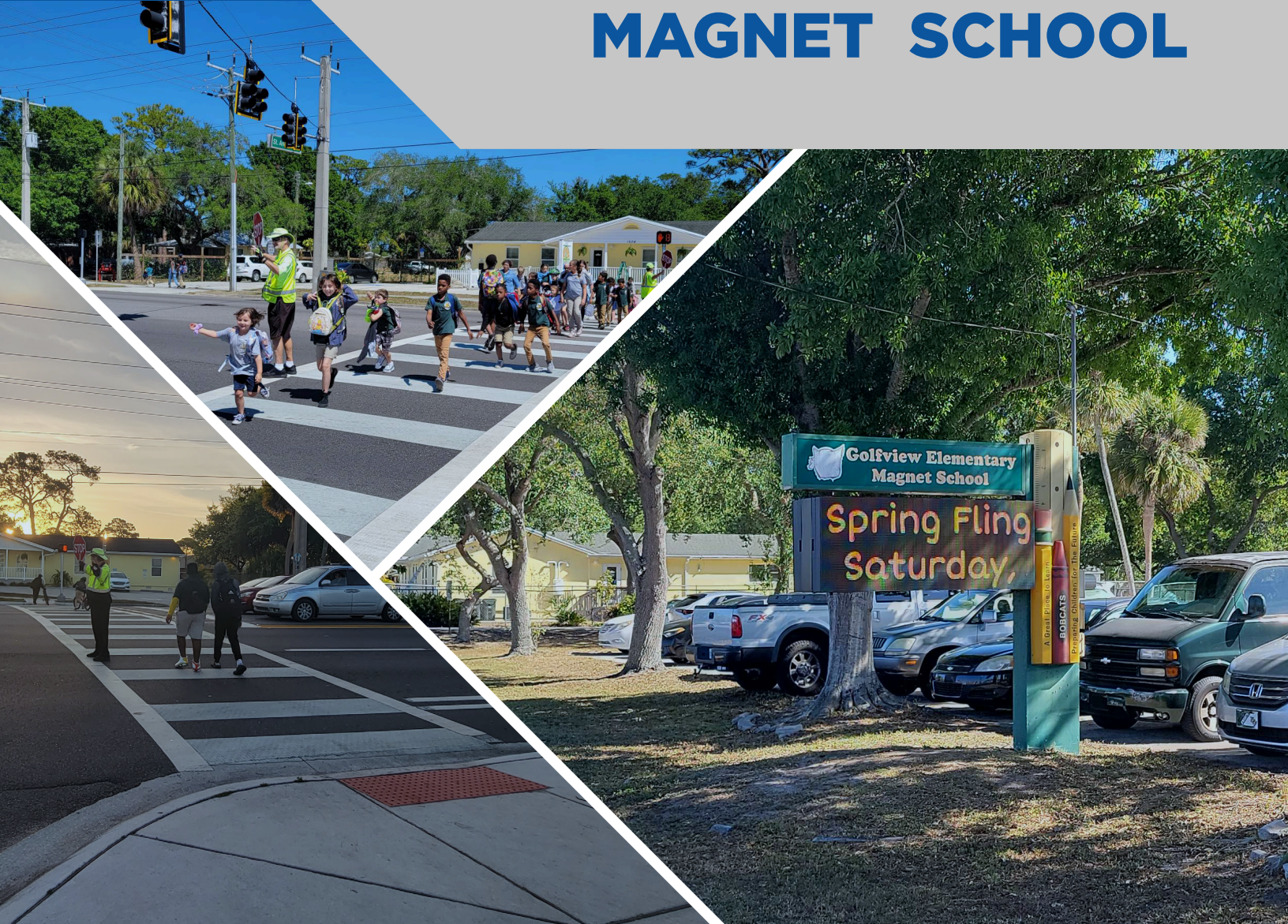


SCHOOL ROUTES ANALYSIS

GOLFVIEW ELEMENTARY MAGNET SCHOOL

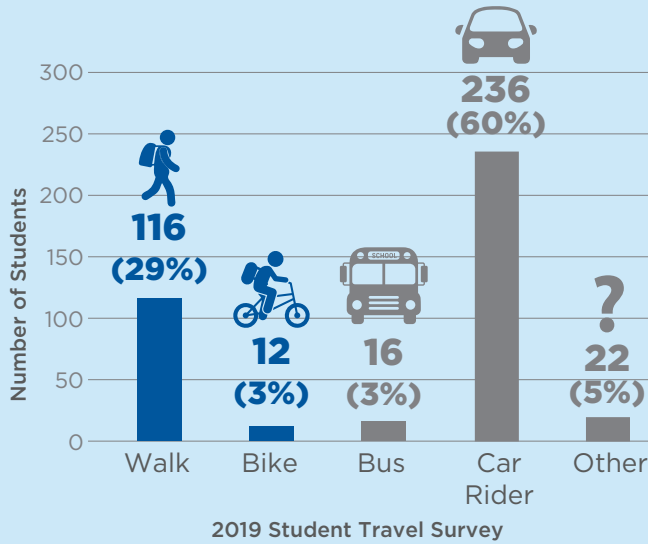


GRAPHICAL SUMMARY REPORT

JULY 2023



Student Travel Modes (2019)



Total Bicycle & Pedestrian Crashes within Study Area

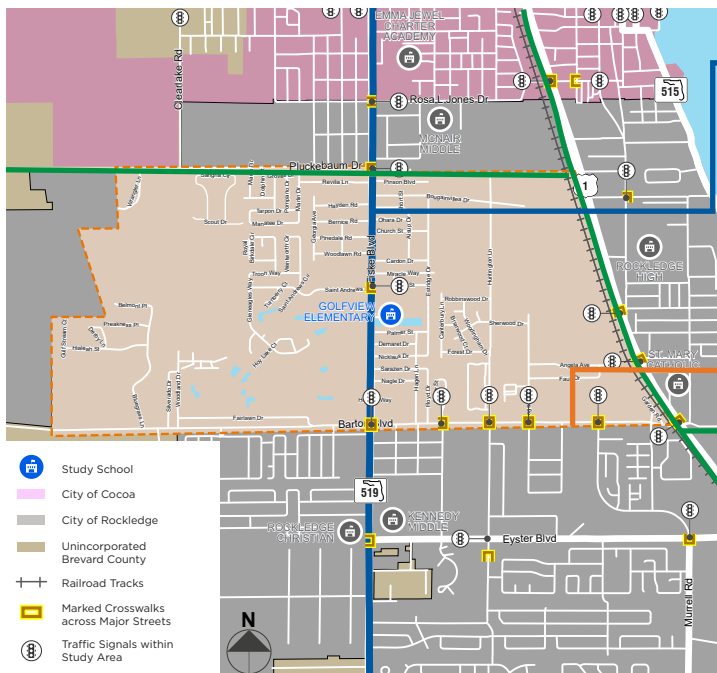


School Aged Bicycle & Pedestrian Crashes within Study Area



August 2016 to July 2022 Crashes from University of Florida's Signal Four Analytics Database

Signals and Crossings within Study Area



Previous & Ongoing Plans

SR 519 (Fiske Boulevard)

- Concept development study to advance the long term vision of the corridor to address the safety and mobility needs of the community, including for vehicle, transit, bicycle and pedestrian modes.
- Construct six foot wide sidewalks where possible, extend the Brevard Zoo Trail, and tighten turning radii where possible.
- Construct curb & gutter north of Barbra Jenkins Street and conduct an areawide drainage study.

2018 SCTPO Transit Bus Stop Accessibility Study

- The 2018 Space Coast Area Transit Bus Stop Accessibility Study prioritized accessibility and safety improvements needed at each bus stop.

2019 SCTPO Bicycle & Pedestrian Master Plan

- The 2019 SCTPO Bicycle & Pedestrian Master Plan includes filling sidewalk and bicycle facility gaps throughout the county.
- Near Golfview Elementary School, this includes a proposed alignment of the East Coast Greenway along the west side of US 1 and filling sidewalk gaps along Pluckebaum Drive.

Figure 1: Background Information
School Routes Analysis
Golfview Elementary School

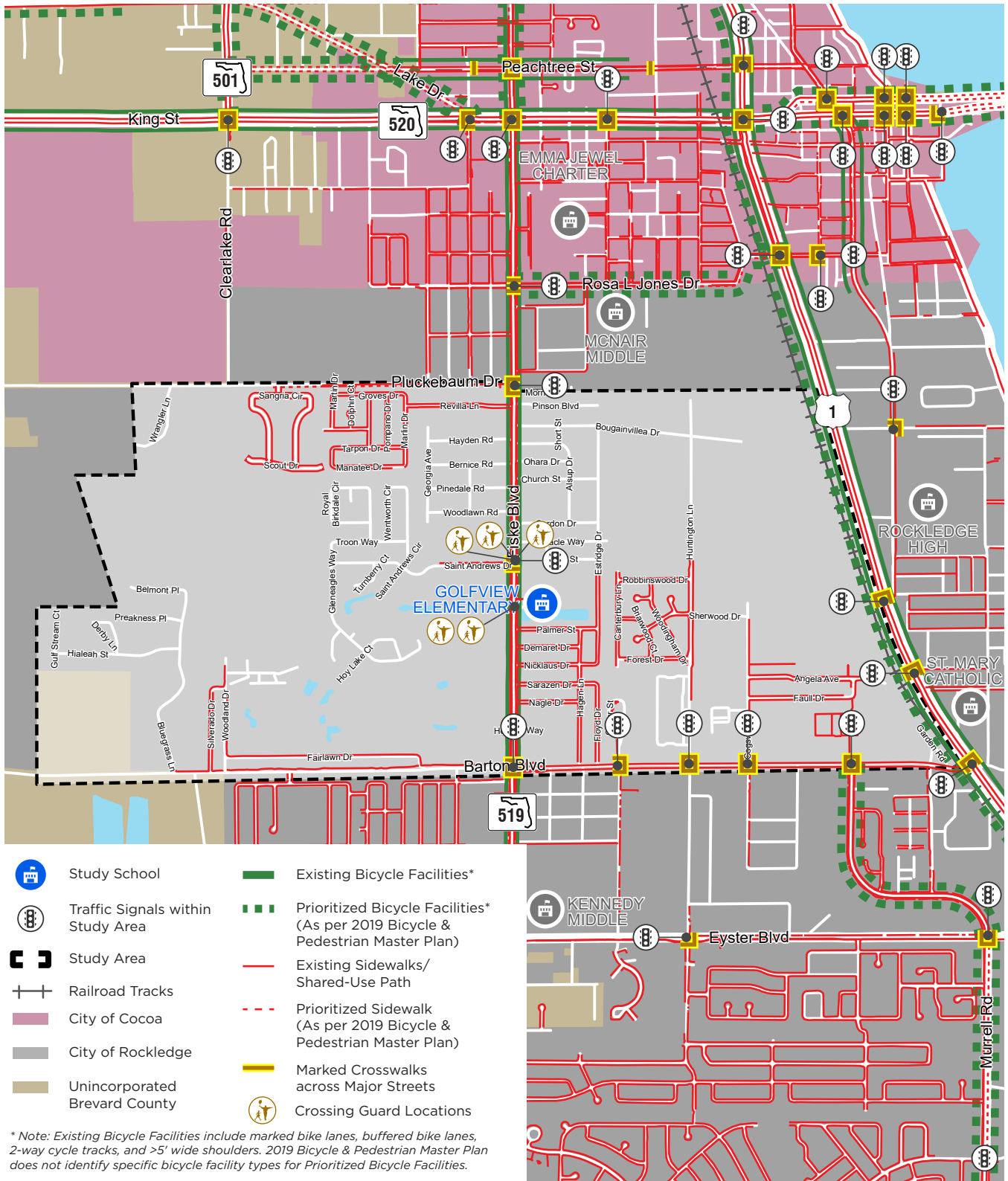


Figure 2: Existing and Planned Pedestrian and Bicycle Facilities
 School Routes Analysis
Golfview Elementary School



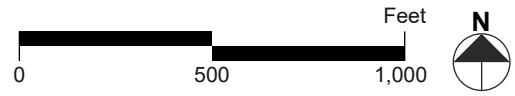
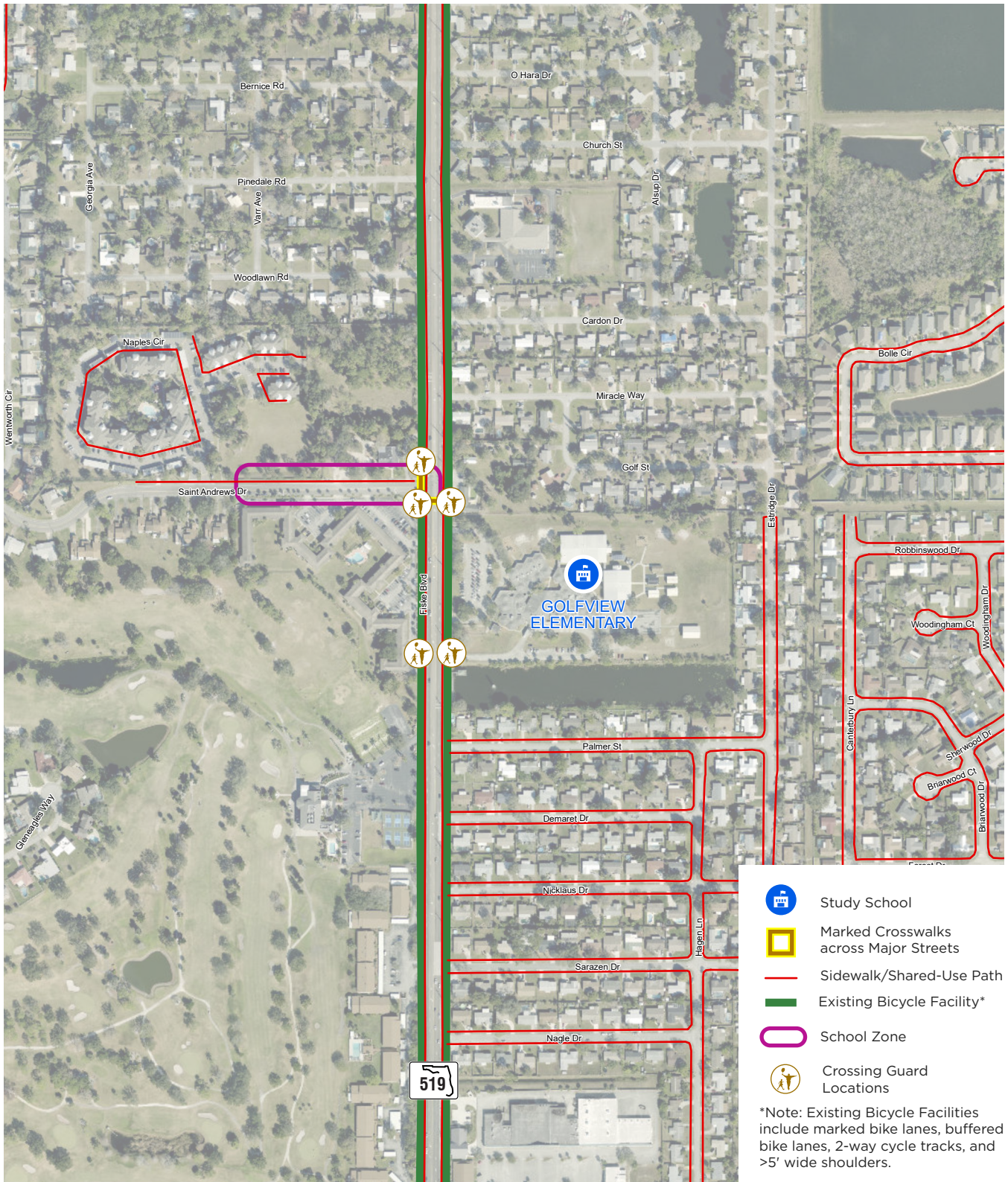
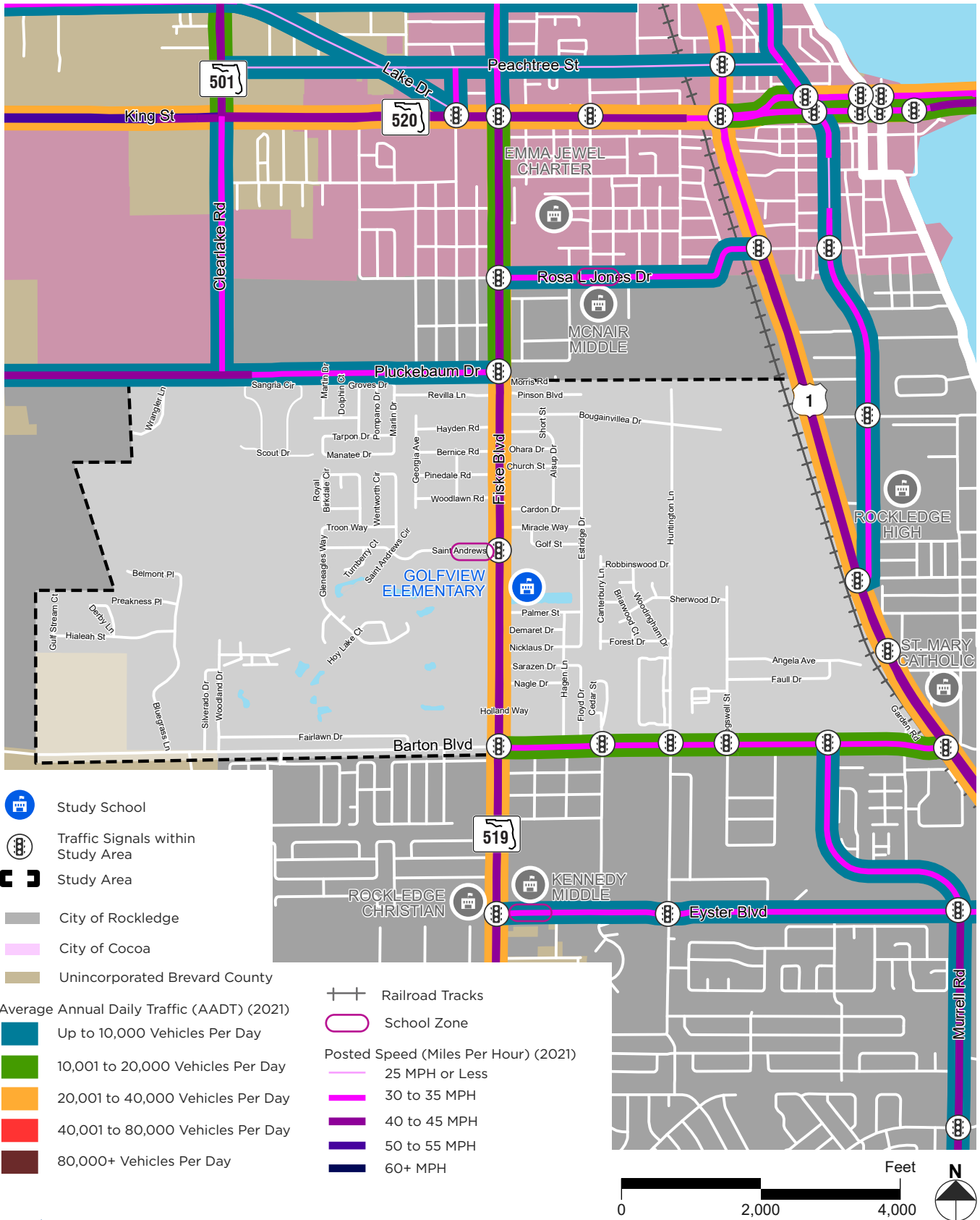


Figure 3: School Context Aerial
 School Routes Analysis
Golfview Elementary School





**Figure 4: Existing Conditions Traffic Data
School Routes Analysis
Golfview Elementary School**

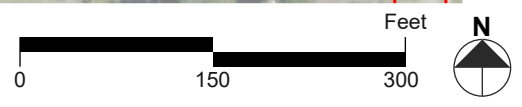
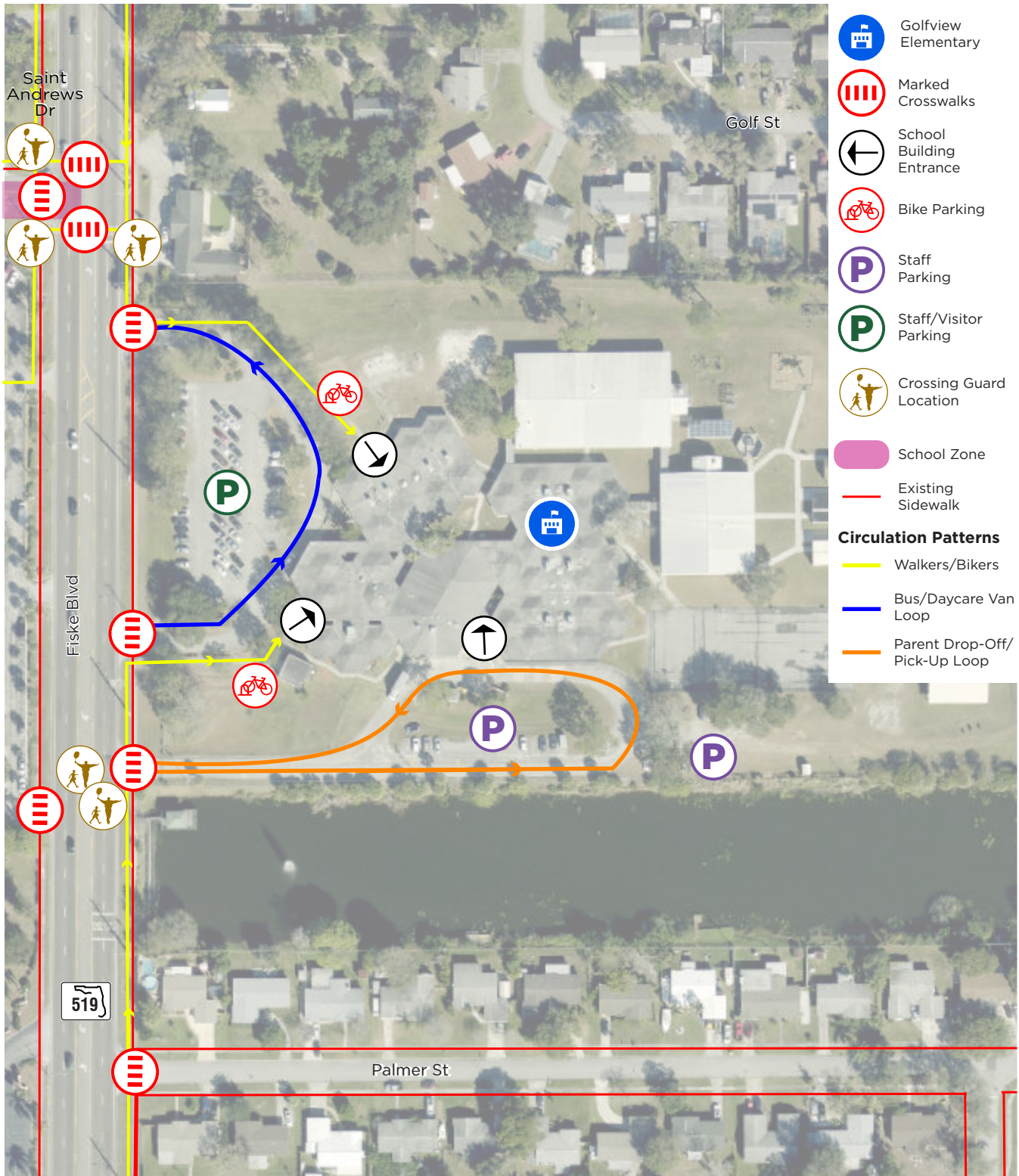


Figure 5: Existing School Circulation Map
 School Routes Analysis
Golfview Elementary School



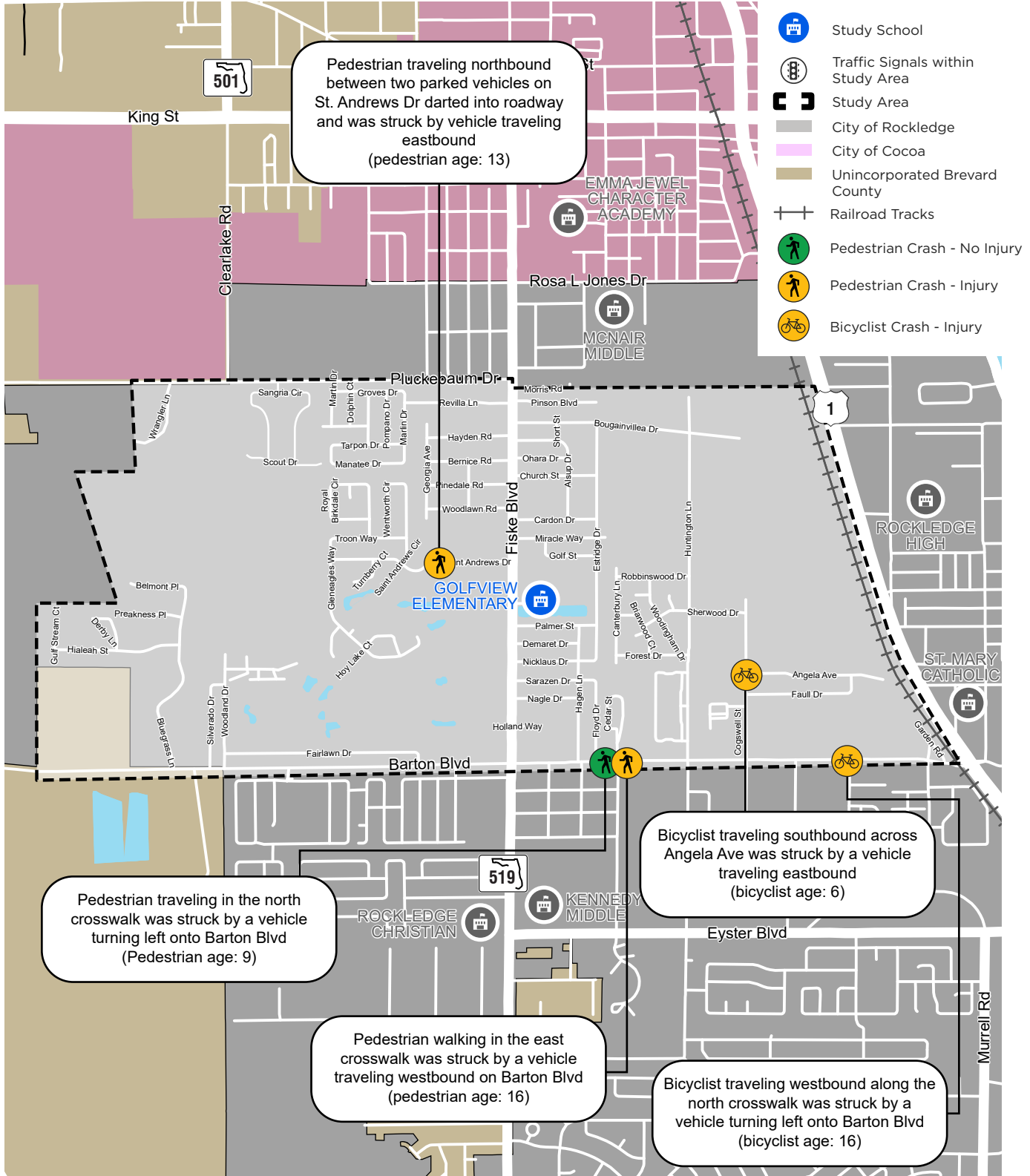


Figure 6: School Aged Pedestrian and Bicycle Crashes (August 2016 to July 2022)

School Routes Analysis

Golfview Elementary School



School Campus Recommendations

No.	Location	Recommendation	Type	Time-Frame	Cost Estimate
1	School Campus	Consider improving school security by installing an interior fence around the school buildings so that if anyone breaches the exterior fence, they will not have access to the school buildings. Leave the gate at the southern driveway to the school campus open throughout the school day to provide for deliveries and reduce queueing on SR 519 (Fiske Boulevard) during parent pick-up times.	Sign/Signal	Near-Term	Further Study Required to Evaluate School Security System
2	School Campus	In the afternoon peak-period open the gate at 1:30 PM to reduce queueing on SR 519 (Fiske Boulevard).	Maintenance	Maintenance	None
3	School Campus	Add more paved staff parking and lighting at the southeast corner of the school campus.	Roadway	Long-Term	\$275,000 to \$325,000
4	School Campus	Enhance pavement markings and add signage to discourage wrong way driving behavior at the two drop-off/pick-up loops.	Sign/Signal	Maintenance	<\$10,000

Study Area Recommendations

No.	Location	Recommendation	Type	Time-Frame	Cost Estimate
5	St. Andrews Drive	Fill sidewalk gaps on the north side of St. Andrews Drive from Wentworth Circle to Naples Circle and on the south side of St. Andrews Drive from Wentworth Circle to SR 519 (Fiske Boulevard).	Sidewalk	Long-Term	\$365,000 to \$430,000
6	St. Andrews Drive	Add flashing beacon signage for the school zone along St. Andrews Drive. Restripe pavement markings, add advance school zone warning signs, and add "End School Zone" signage.	Sign/Signal	Near-Term	\$30,000 to \$40,000
7	Barton Boulevard & Barrington Circle	Add a rapid rectangular flashing beacon (RRFB) at the existing crosswalk.	Sign/Signal	Near-Term	\$45,000 to \$60,000

Table 1: Recommendations Summary

School Routes Analysis Golfview Elementary School



Study Area Recommendations

No.	Location	Recommendation	Type	Time-Frame	Cost Estimate
8	Barton Boulevard and St. Andrews Drive	<p>Install/upgrade pedestrian ramps to meet current standards along:</p> <ul style="list-style-type: none"> Barton Boulevard from Bluegrass Lane to US 1; and St. Andrews Drive from just west of Naples Circle to SR 519 (Fiske Boulevard). 	Sidewalk	Long-Term	\$100,000 to \$120,000
9	School Campus	Add high-visibility crosswalks at school driveways.	Crossing	Maintenance	<\$10,000
10	SR 519 (Fiske Boulevard) & St. Andrews Drive	Conduct a signal timing study to evaluate the feasibility of increasing the pedestrian crossing time to allow all bicyclists and pedestrians to cross.	Sign	Maintenance	Further Study Required for Signal Timing Study
11	SR 519 (Fiske Boulevard) & Northern and Southern School Campus Driveways	<p>Restrict left turn traffic at the northern school driveway by:</p> <ul style="list-style-type: none"> Installing a traffic separator in the SR 519 (Fiske Boulevard) median between the inside southbound travel lane and the northbound left turn lane at St. Andrews Drive; Constructing a “porkchop” island for the northernmost driveway, forcing vehicles to make a right turn only; Recirculating the bus/daycare van/Pre-K loop back through the staff parking area and loop those vehicles to exit out of the middle driveway if they want to left turn onto SR 519 (Fiske Boulevard); and Widening the roadway leading from/to the middle driveway so it can accommodate two-way traffic, including the wider turning movements for buses. <p>Employ two crossing guards at the middle driveway to facilitate the left turn movement.</p>	Roadway/ Enforcement	Near-Term	Further Study Required for Roadway Design

Table 1: Recommendations Summary Cont.
 School Routes Analysis
Golfview Elementary School

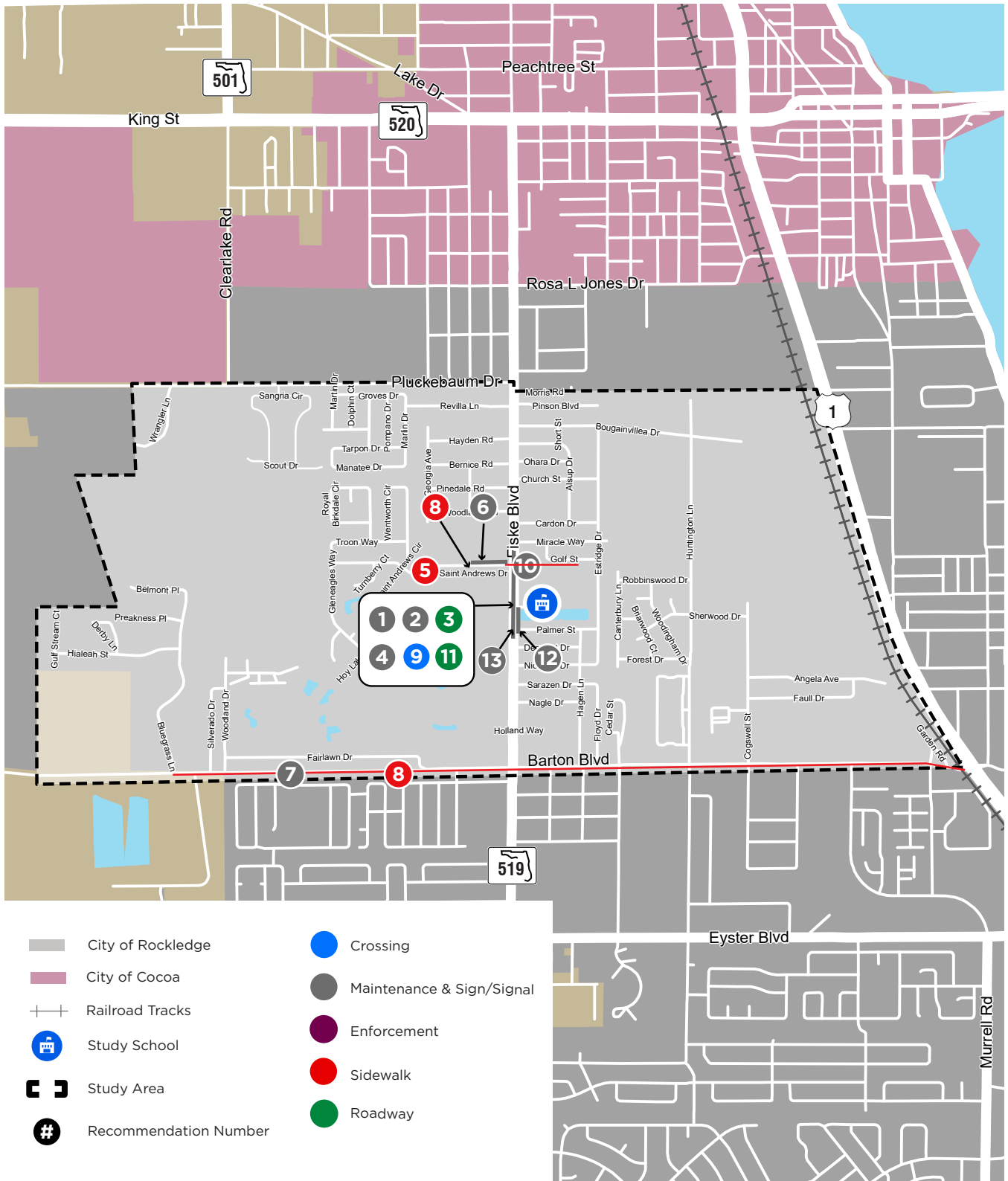


Study Area Recommendations

No.	Location	Recommendation	Type	Time-Frame	Cost Estimate
12	SR 519 (Fiske Boulevard)	Add "No Parking or Standing" signage on the east side of SR 519 (Fiske Boulevard) from Palmer Street to the southern driveway to the school	Sign	Maintenance	<\$10,000
13	SR 519 (Fiske Boulevard)	Conduct a school zone analysis to determine if a school zone is justified along SR 519 (Fiske Boulevard) near the school campus. If justified, add flashing beacon signage along SR 519 (Fiske Boulevard). Restripe pavement markings and add advance school zone warning signs.	Sign	Near-Term	Further Study Required for School Zone Analysis

Table 1: Recommendations Summary Cont.
 School Routes Analysis
Golfview Elementary School





Plan does not identify specific bicycle facility types for Prioritized Bicycle Facilities.

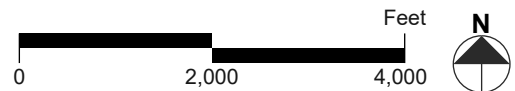
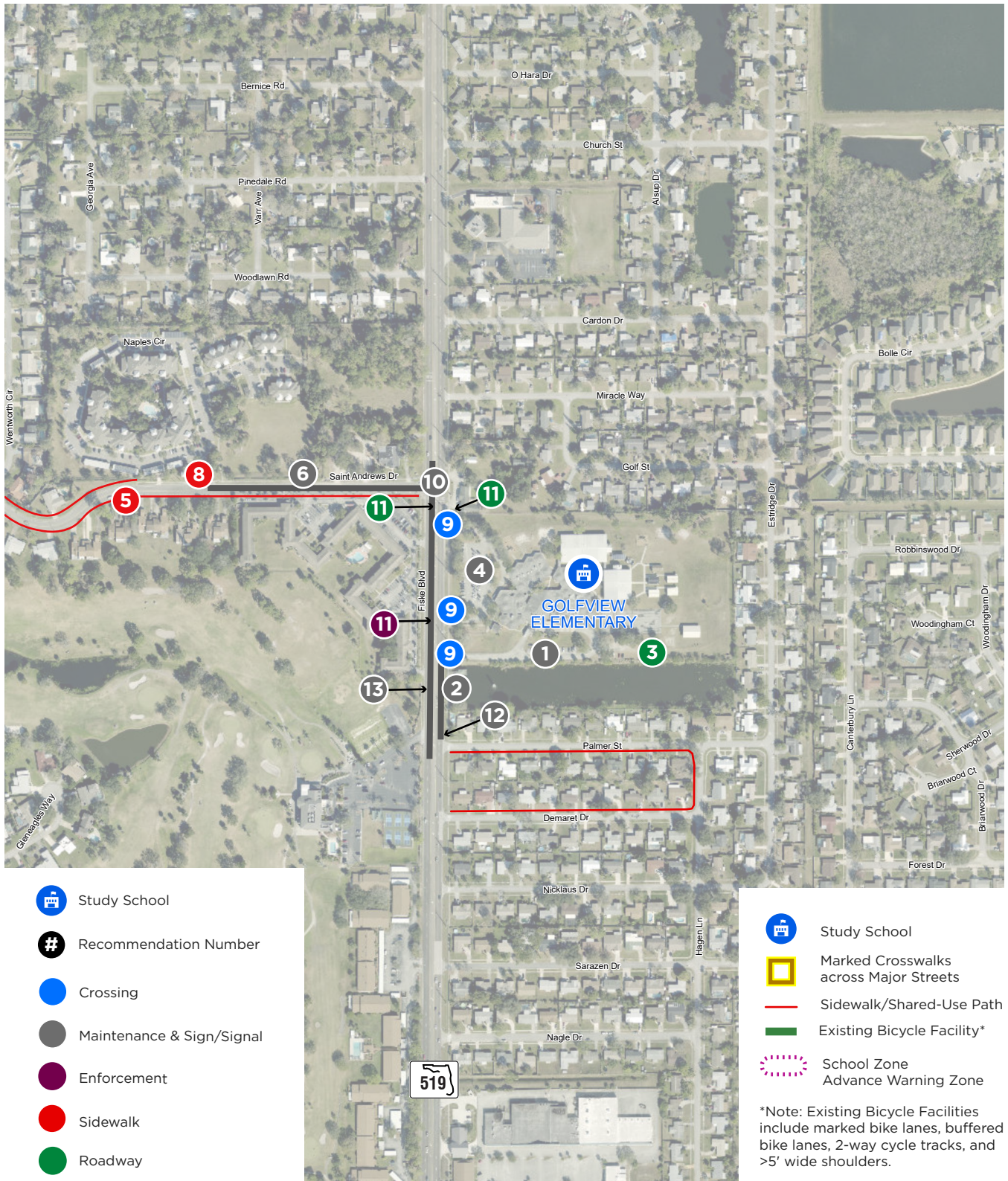


Figure 7: Recommendations
 School Routes Analysis
Golfview Elementary School





- Study School
- Recommendation Number
- Crossing
- Maintenance & Sign/Signal
- Enforcement
- Sidewalk
- Roadway

- Study School
- Marked Crosswalks across Major Streets
- Sidewalk/Shared-Use Path
- Existing Bicycle Facility*
- School Zone Advance Warning Zone

*Note: Existing Bicycle Facilities include marked bike lanes, buffered bike lanes, 2-way cycle tracks, and >5' wide shoulders.



Figure 8: Recommendations: School Context Aerial
School Routes Analysis
Golfview Elementary School



Prepared For:



2725 Judge Fran Jamieson Way,
Bldg. B, Room 105,
Melbourne, FL 32940

Prepared By:



225 E Robinson Street,
Suite 355,
Orlando, FL 32801