

# SCHOOL ROUTES ANALYSIS

## ODYSSEY CHARTER SCHOOL

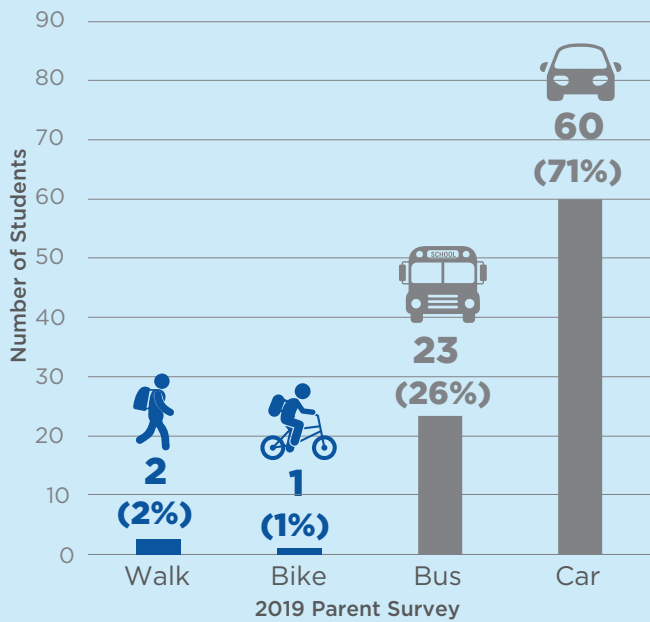


### GRAPHICAL SUMMARY REPORT

JULY 2020



### Student Travel Modes (2019)



### Total Bicycle & Pedestrian Crashes within Study Area

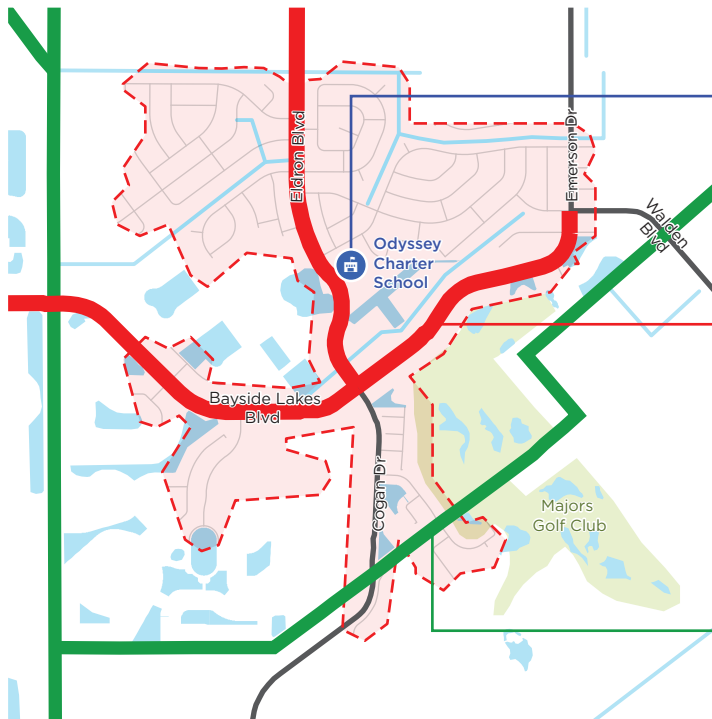


### School Aged Bicycle & Pedestrian Crashes within Study Area



2014 to 2018 Crashes from University of Florida's Signal Four Analytics Database

### Signals and Crossings within Study Area



### Previous & Ongoing Plans

#### School Campus Projects

- Sidewalks to be widened along the school driveway
- Parent/bus drop-off/pick-up loop and parking to be expanded
- New staff parking lot to be constructed
- New sidewalk will be constructed along Kansas Road and Shrine Circle

#### Bicycle & Pedestrian Master Plan (2019)

- Bicycle facilities prioritized along Emerson Drive and Bayside Lakes Boulevard

#### City of Palm Bay - Planned Trails

- Trail facilities planned along drainage water canals

Figure 1: Background Information

School Routes Analysis  
**Odyssey Charter School**





Odyssey Charter School

Existing Sidewalk

Proposed Sidewalks (City of Palm Bay)  
+ Prioritized Sidewalk  
(As per Draft Bicycle & Pedestrian Master Plan)

Marked Crosswalks  
across Major Streets



Crossing Guard Location



Teacher Crossing Guard Location



Traffic Signals within  
Study Area



Existing Bicycle Facilities\*



Prioritized Bicycle Facilities\*  
(As per Draft Bicycle & Pedestrian Master Plan)

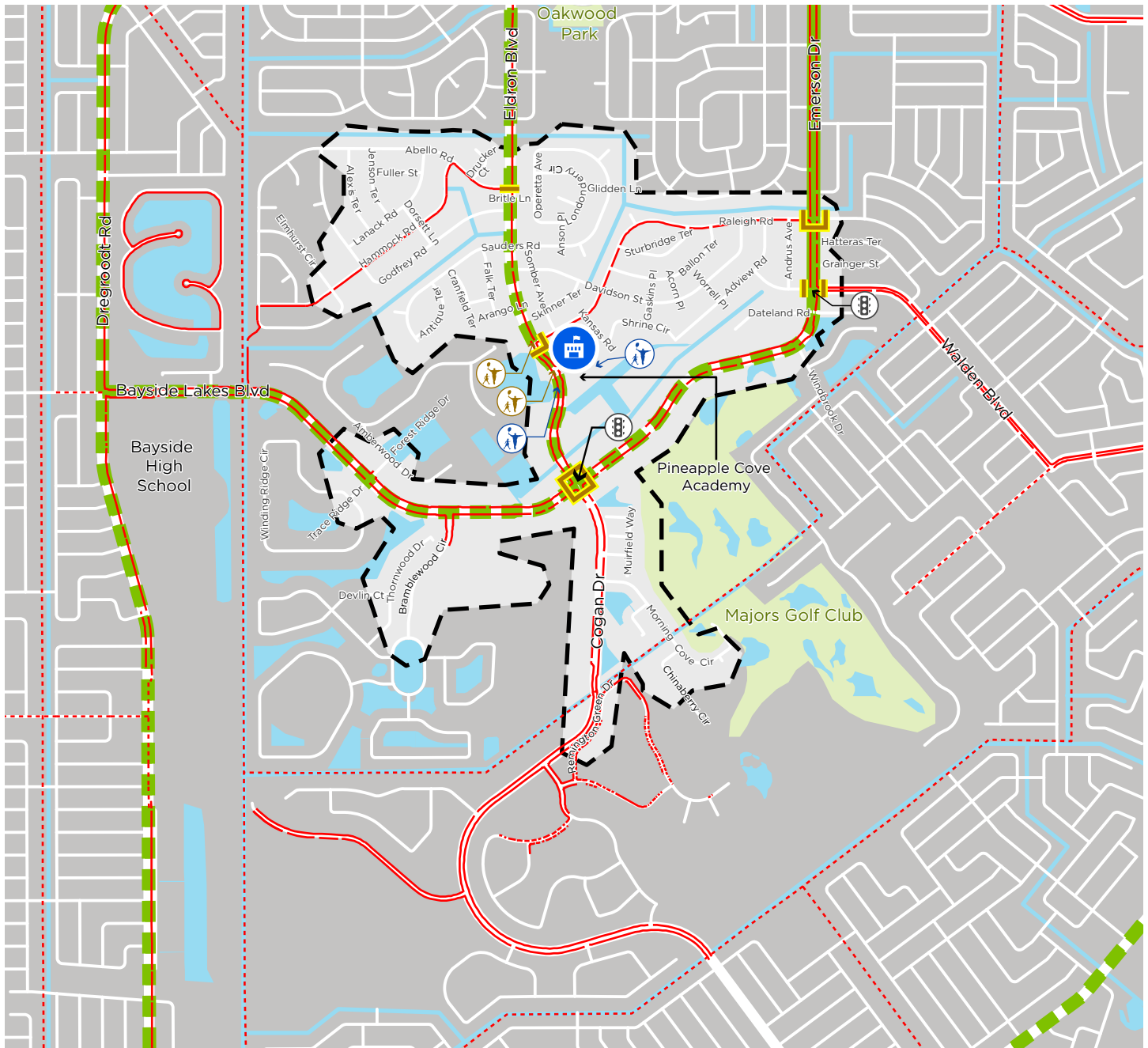


Study Area



City of Palm Bay

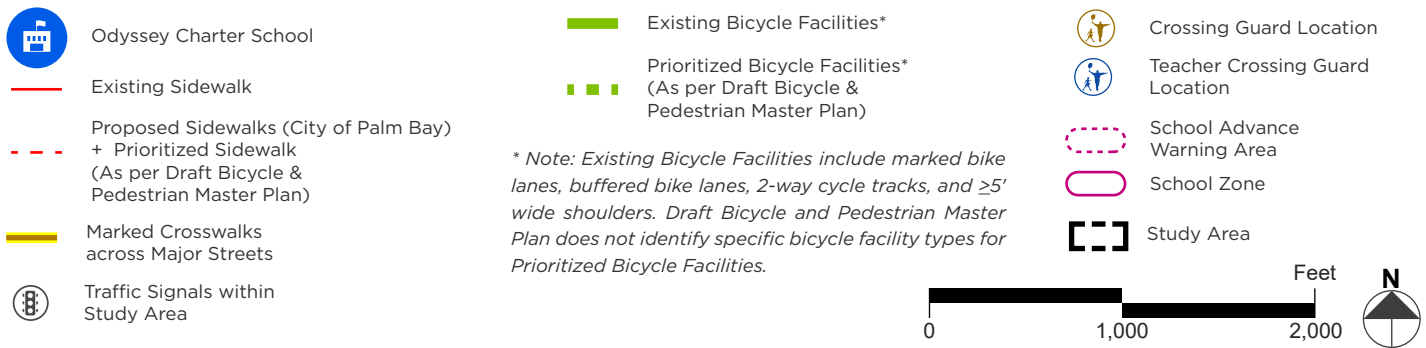
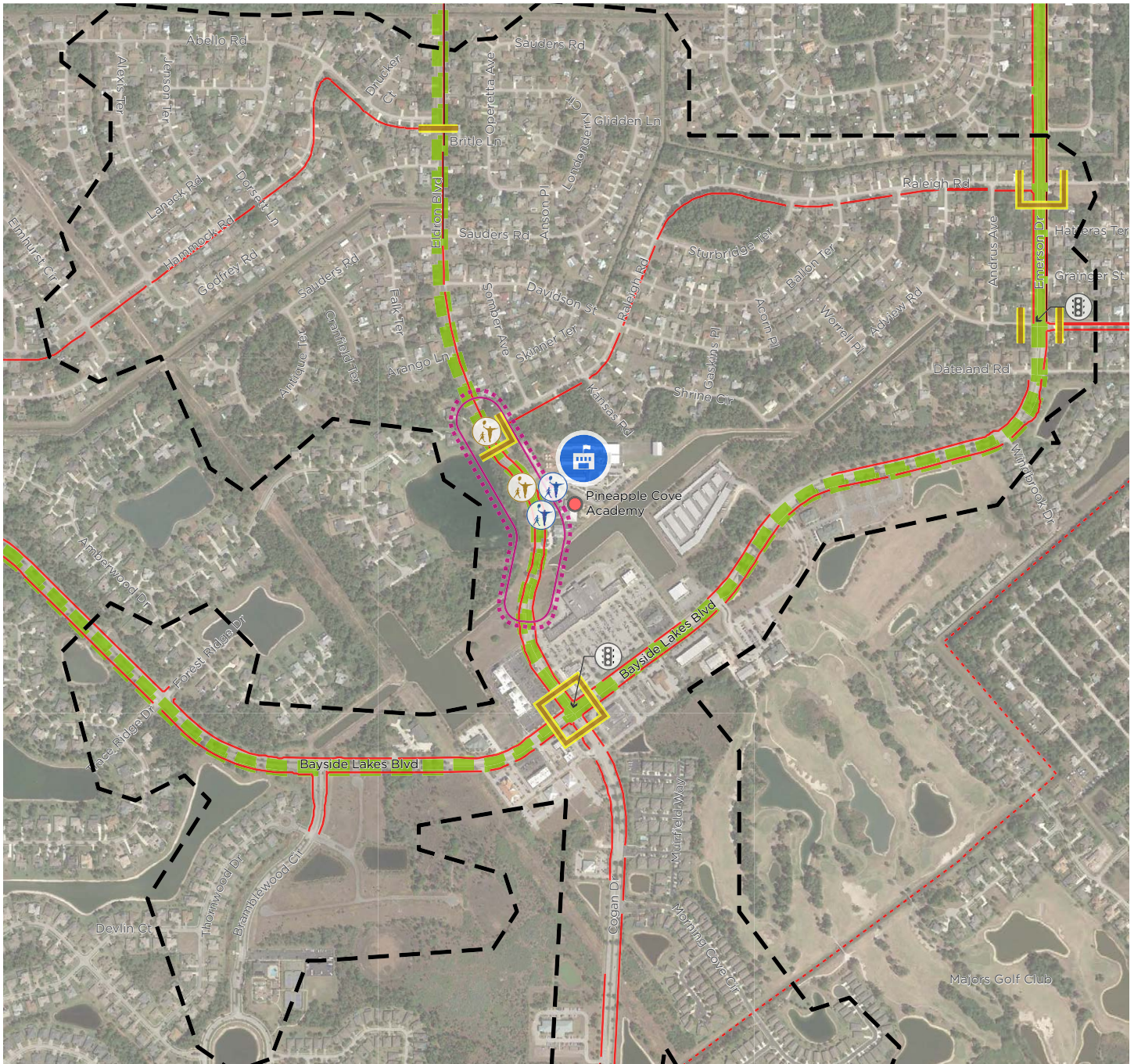
\* Note: Existing Bicycle Facilities include marked bike lanes, buffered bike lanes, 2-way cycle tracks, and ≥5' wide shoulders. Draft Bicycle and Pedestrian Master Plan does not identify specific bicycle facility types for Prioritized Bicycle Facilities.



**Figure 2: Existing and Planned Bicycle and Pedestrian Facilities**



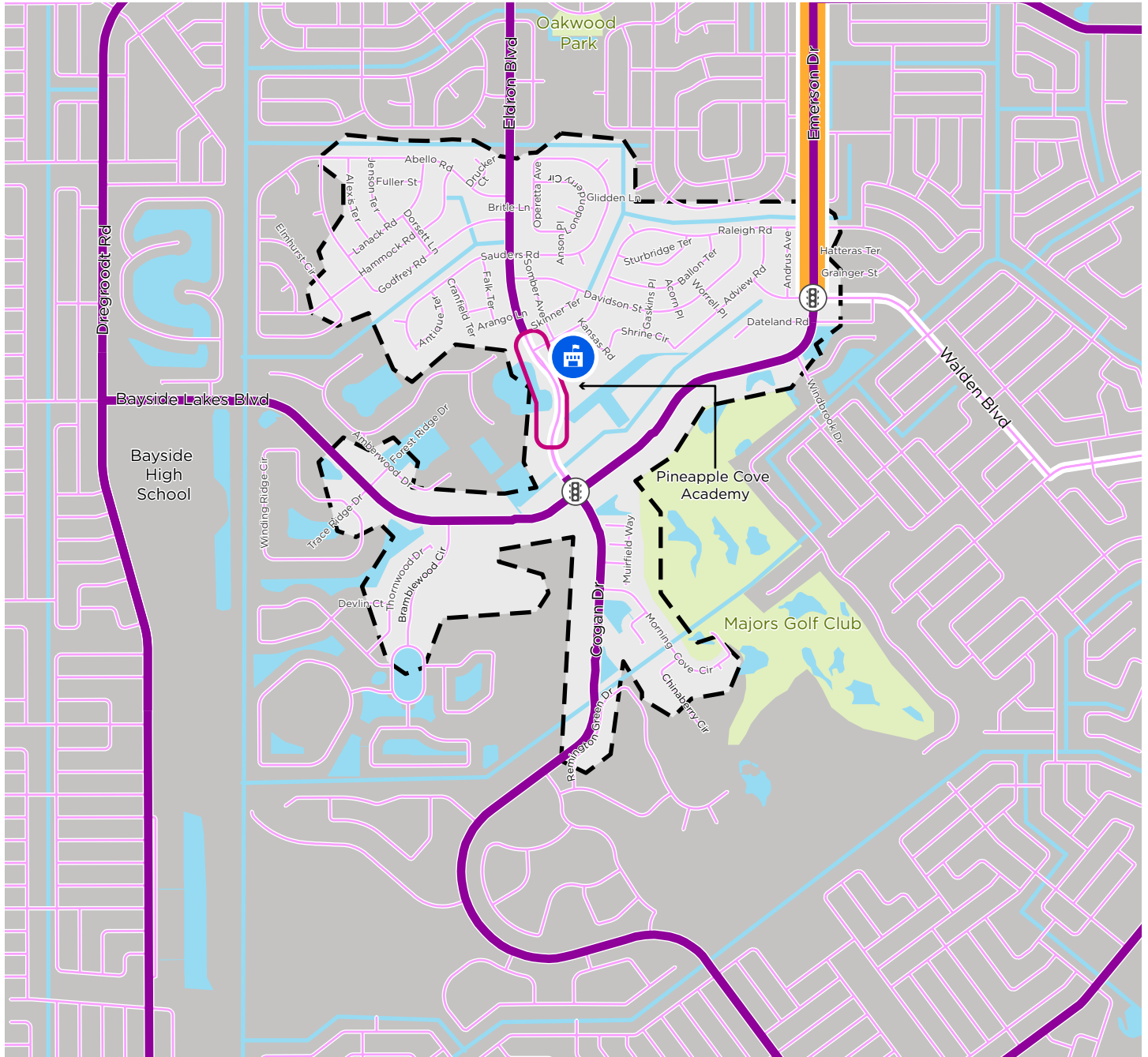
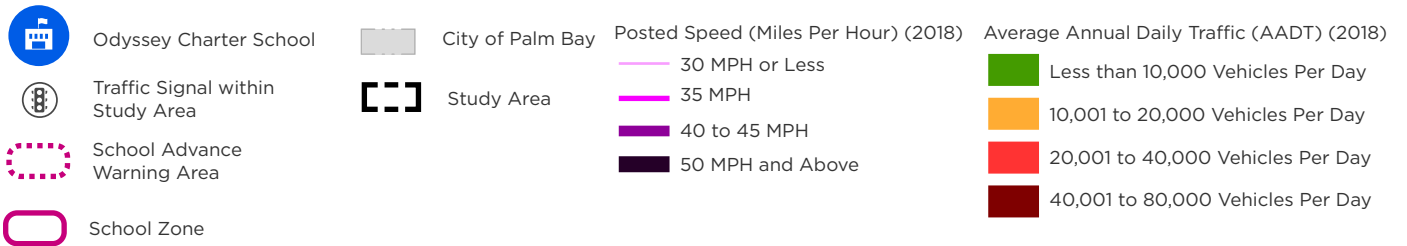




**Figure 3: Existing Conditions School Context Aerial Map**

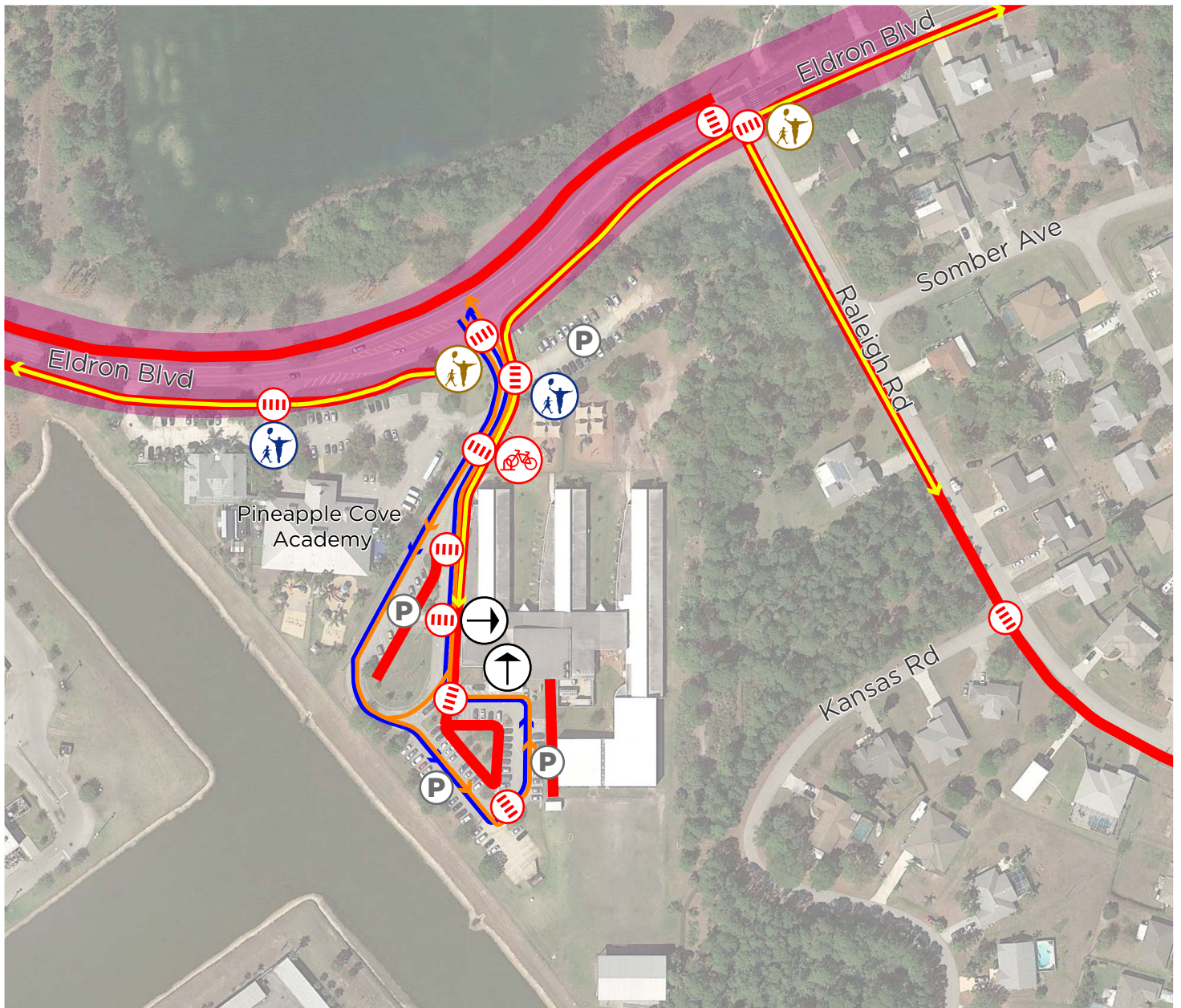
School Routes Analysis  
**Odyssey Charter School**





**Figure 4: Existing Conditions Traffic Data**

School Routes Analysis  
**Odyssey Charter School**



Odyssey Charter School



Marked Crosswalks



School Building Entrance



Crossing Guard Location



Teacher Crossing Guard Location



Bike Parking



Car Parking



School Zone



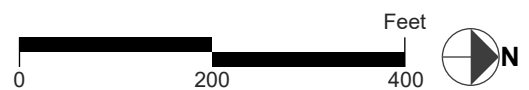
Existing Sidewalk

**Circulation Patterns**

Walkers/Bikers

School Bus Loop

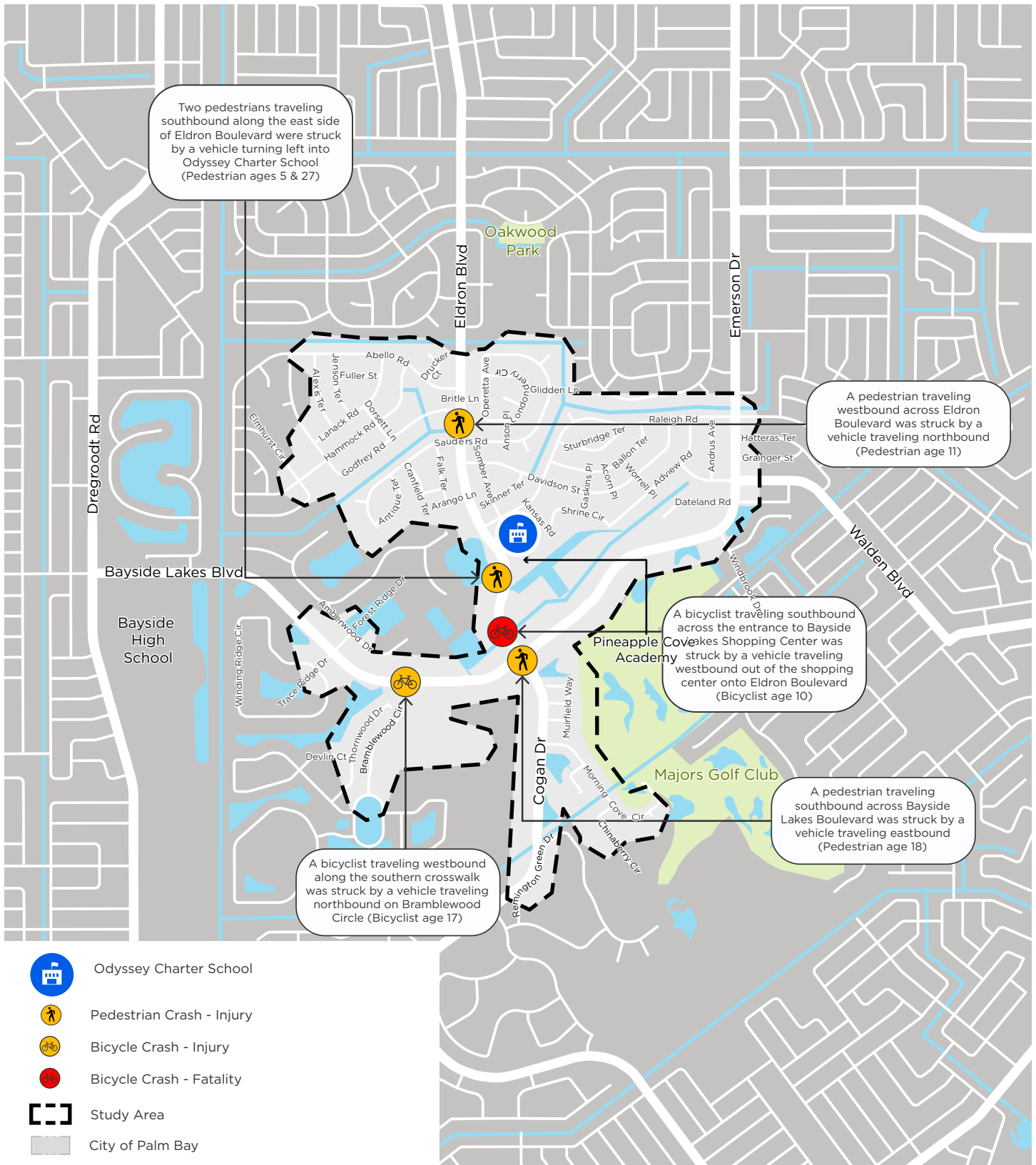
Parent Drop-Off/Pick-Up Loop



**Figure 5: Existing School Circulation Map**

School Routes Analysis  
**Odyssey Charter School**





**Figure 6: Bicycle and Pedestrian Crashes (2014 - 2018)**

## School Campus Recommendations

No.	Location	Recommendation	Type	Time-Frame	Cost Estimate
1	Crosswalks on School Property	Re-stripe crosswalks as high-visibility crosswalks and add ADA compliant pedestrian ramps.	Crossing	Near-Term	\$10,000 to \$15,000
2	Proposed New Staff Parking Lot Driveway on Raleigh Road	Add new pedestrian gate and 5 foot to 6 foot sidewalk to the school entrance.	Sidewalk	Near-Term	\$45,000 to \$50,000
3	Northeast Corner of Eldron Boulevard and the School Entrance	Trim hedges in front of the school sign to increase sight distance for vehicles turning onto Eldron Boulevard	Maintenance	Maintenance	Routine Maintenance

## Study Area Recommendations

No.	Location	Recommendation	Type	Time-Frame	Cost Estimate
4	Shrine Circle/ Adview Road from just West of Gaskins Place to Raleigh Road	Build a 5 foot to 6 foot wide sidewalk on the south/east side.	Sidewalk	Long-Term	\$160,000 to \$190,000
5	Walden Boulevard from Adview Road to Emerson Drive	Build a 5 foot to 6 foot wide sidewalk on the south side.	Sidewalk	Long-Term	\$55,000 to \$65,000
6	Eldron Boulevard from Raleigh Road to Ruffin Circle	Build a 5 foot to 6 foot wide sidewalk on the west side.	Sidewalk	Long-Term	\$185,000 to \$215,000
7	Cogan Drive/Eldron Boulevard from Stonebriar Drive to Raleigh Road	Widen existing sidewalk to 10 foot to 12 foot shared use path on the east side.	Sidewalk	Long-Term	\$730,000 to \$850,000
8	Eldron Boulevard and Bayside Lakes Boulevard Intersection	Install high visibility crosswalks and upgrade pedestrian ramps to make them ADA compliant.	Crossing	Near-Term	\$15,000 to \$20,000

### Recommendations Table

## School Routes Analysis Odyssey Charter School





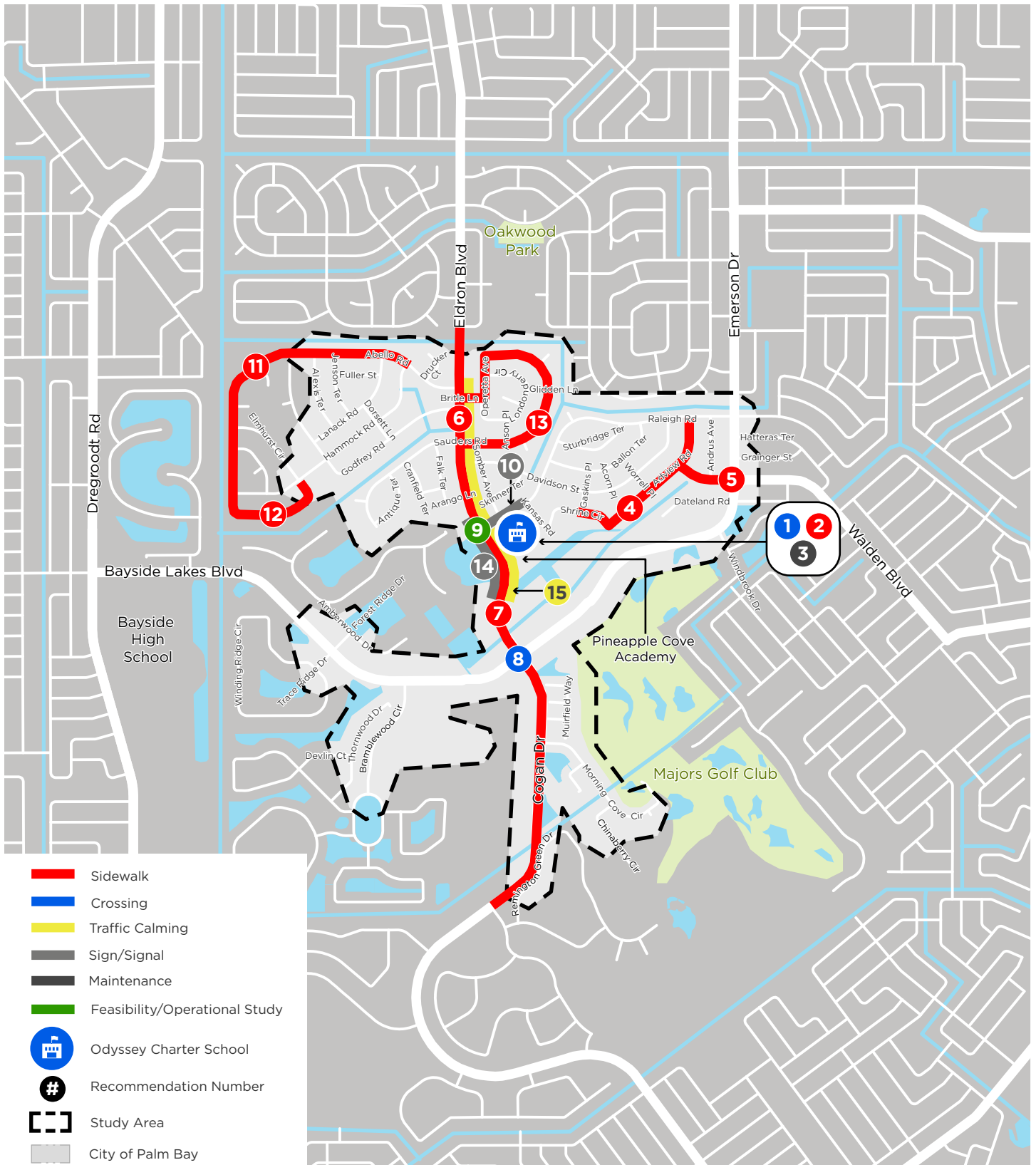
## Study Area Recommendations

No.	Location	Recommendation	Type	Time-Frame	Cost Estimate
9	Eldron Boulevard and Raleigh Road Intersection	Conduct an operational/warrant study to review changing the two-way stop control to an all way stop control or signal/roundabout.	Feasibility Study (Intersection Control)	Near-Term	Further Study Required
10	Raleigh Road from Eldron Boulevard to Kansas Road	Install 'No Parking' signs on both sides of the roadway and increase enforcement.	Sign/Signal	Near-Term	\$15,000 to \$20,000
11	Abello Road from Hammock Road to Elmhurst Circle	Build a 5 foot to 6 foot wide sidewalk on south/east side of Abello Road the road.	Sidewalk	Long-Term	\$275,000 to \$320,000
12	Elmhurst Circle from Abello Road to Hammock Road	Build a 5 foot to 6 foot wide sidewalk on north/west side of Abello Road the road.	Sidewalk	Long-Term	\$85,000 to \$100,000
13	Birtle Lane/ Operetta Avenue/ Sauders Road from Eldron Boulevard to Eldron Boulevard	Build a 5 foot to 6 foot wide sidewalk on one side of the road.	Sidewalk	Long-Term	\$240,000 to \$280,000
14	Eldron Boulevard from just North of Bayside Lakes Shopping Center to just North of Raleigh Road	Adjust school zone speed limit to 15 MPH per guidance in the FDOT Speed Zoning Manual.	Sign/Signal	Near-Term	Further Study Required
15	Eldron Boulevard from just North of Bayside Lakes Shopping Center to Abello Road	Add traffic calming devices such as speed humps, raised crosswalks, street trees, etc.	Traffic Calming	Near-Term	Further Study Required

### Recommendations Table (Continued)

## School Routes Analysis Odyssey Charter School





**Figure 7: Recommendations**

School Routes Analysis  
**Odyssey Charter School**

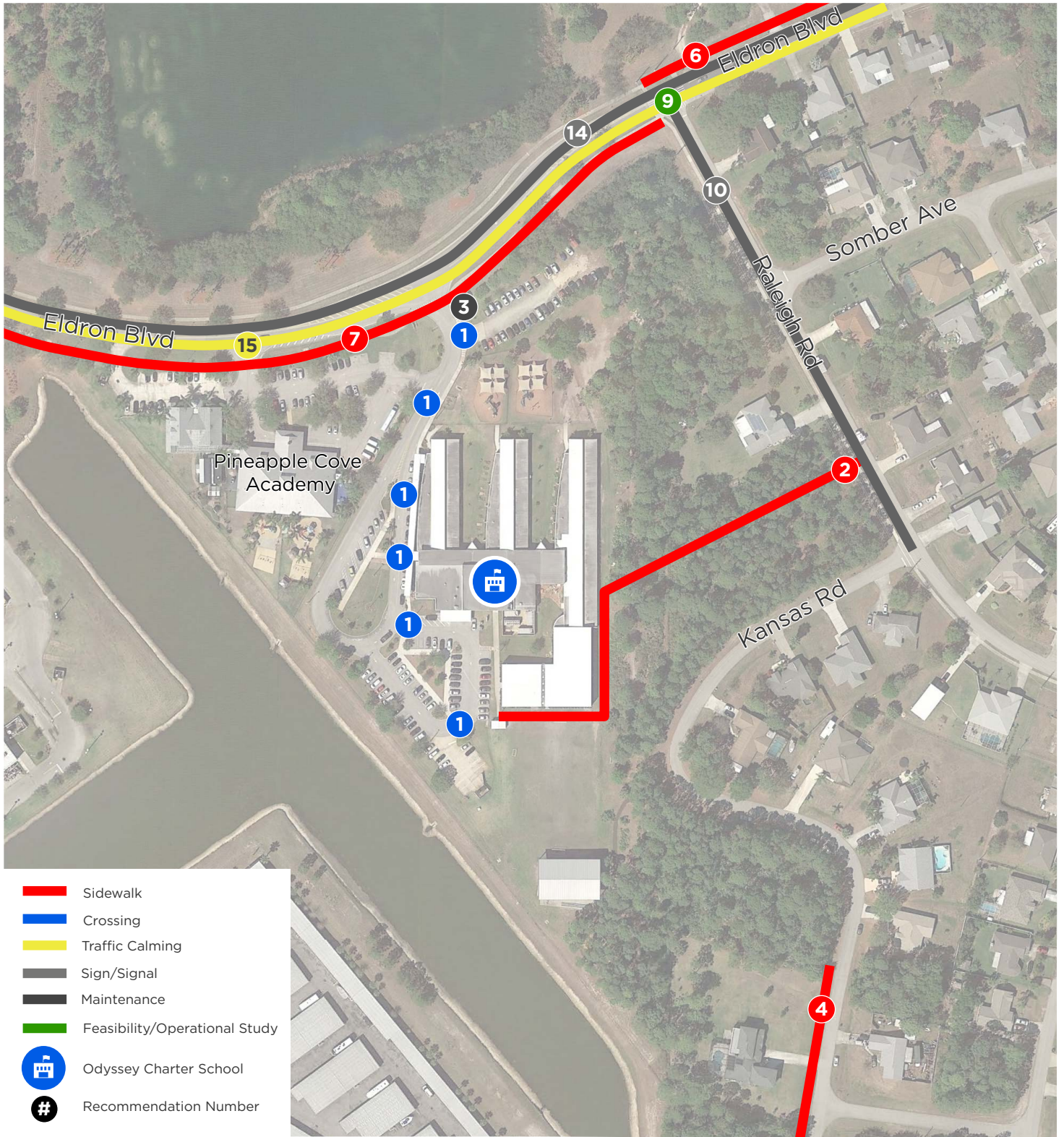




**Figure 8: Recommendations School Context Aerial Map**

School Routes Analysis  
**Odyssey Charter School**





**Figure 9: Recommendations School Campus Aerial Map**

School Routes Analysis  
**Odyssey Charter School**





**Prepared For:**



2725 Judge Fran Jamieson Way,  
Bldg. B, Room 105,  
Melbourne, FL 32940

**Prepared By:**



225 E Robinson Street,  
Suite 355,  
Orlando, FL 32801