

# SCHOOL ROUTES ANALYSIS

## JOHN F. KENNEDY MIDDLE SCHOOL

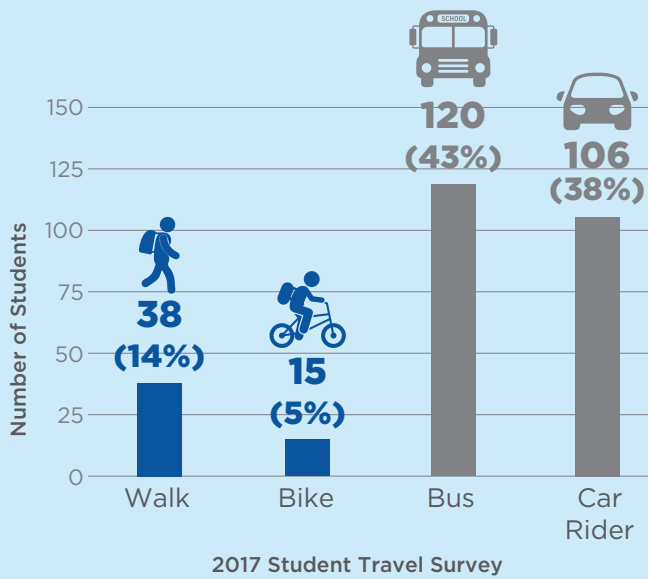


### GRAPHICAL SUMMARY REPORTS

JUNE 2023



## Student Travel Modes (2017)



## Total Bicycle & Pedestrian Crashes within Study Area

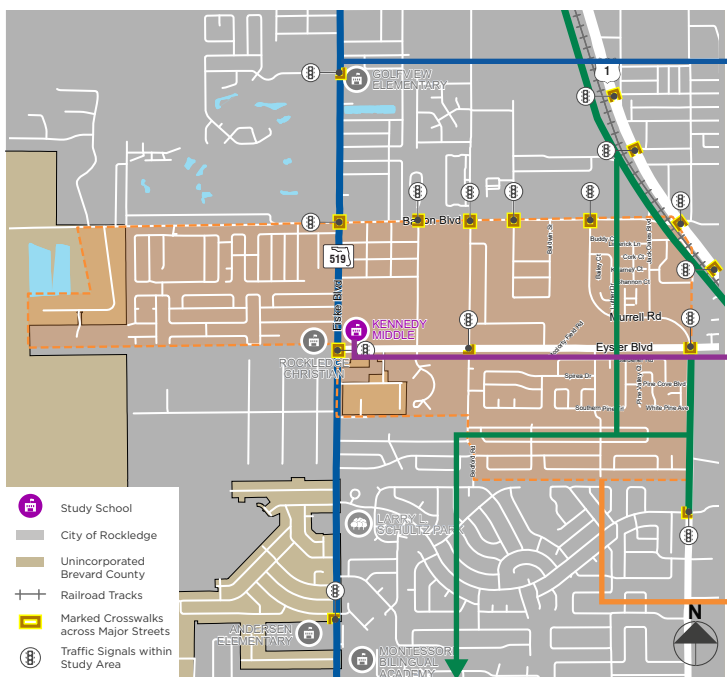


## School Aged Bicycle & Pedestrian Crashes within Study Area



August 2016 to July 2022 Crashes from University of Florida's Signal Four Analytics Database

## Signals and Crossings within Study Area



## Previous & Ongoing Plans

### SR 519 (Fiske Boulevard)

- Concept development study to advance the long term vision of the corridor to address the safety and mobility needs of the community, including for vehicle, transit, bicycle and pedestrian modes.
- Construct six-foot-wide sidewalks where possible, extend the Brevard Zoo trail, and tighten turning radii where possible.
- Construct curb & gutter north of Barbra Jenkins Street and conduct an areawide drainage study.

### Kennedy Middle School Parent Drop-Off/ Pick-Up Loop Improvement

- The school has plans to reconstruct the parent drop-off/pick up loop by moving the easternmost driveway on Eysler Boulevard further to the east. Parents will queue within the school campus using two lanes and will "zipper" down to one lane at the drop-off pick up area.
- This project will also add staff parking.
- Construction is anticipated to be completed Summer 2023.

### 2018 Space Coast Area Transit Bus Stop Accessibility Study

- This study prioritized accessibility and safety improvements needed at each bus stop.

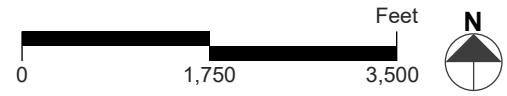
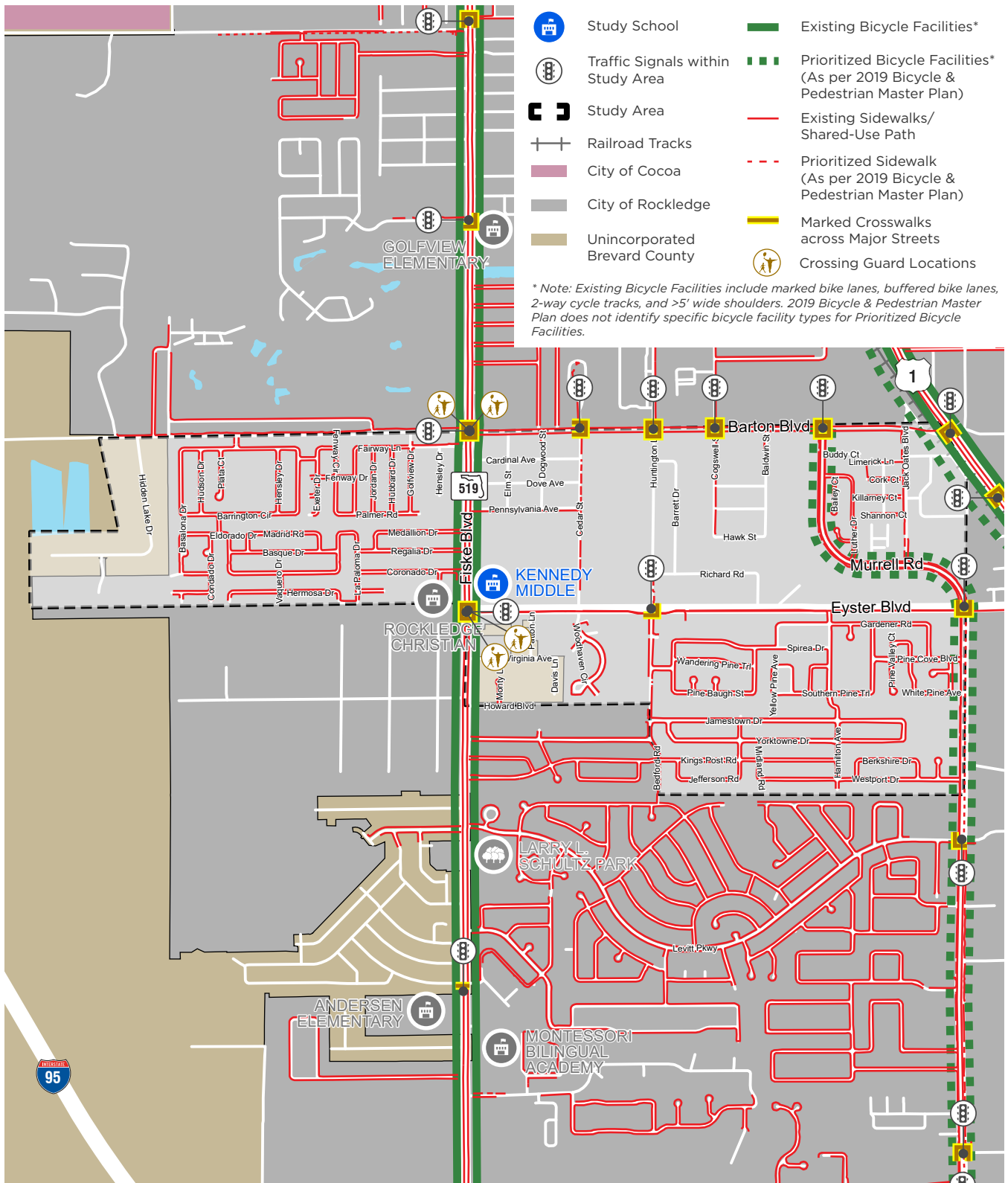
## 2019 SCTPO Bicycle & Pedestrian Master Plan

- The 2019 SCTPO Bicycle & Pedestrian Master Plan includes filling sidewalk and bicycle facility gaps throughout the county.
- Near Kennedy Middle School, this includes a filling bicycle and pedestrian facility gaps along Murrell Road.
- The alternative alignment for the East Coast Greenway trail is located along the west side of US 1 within the study area.



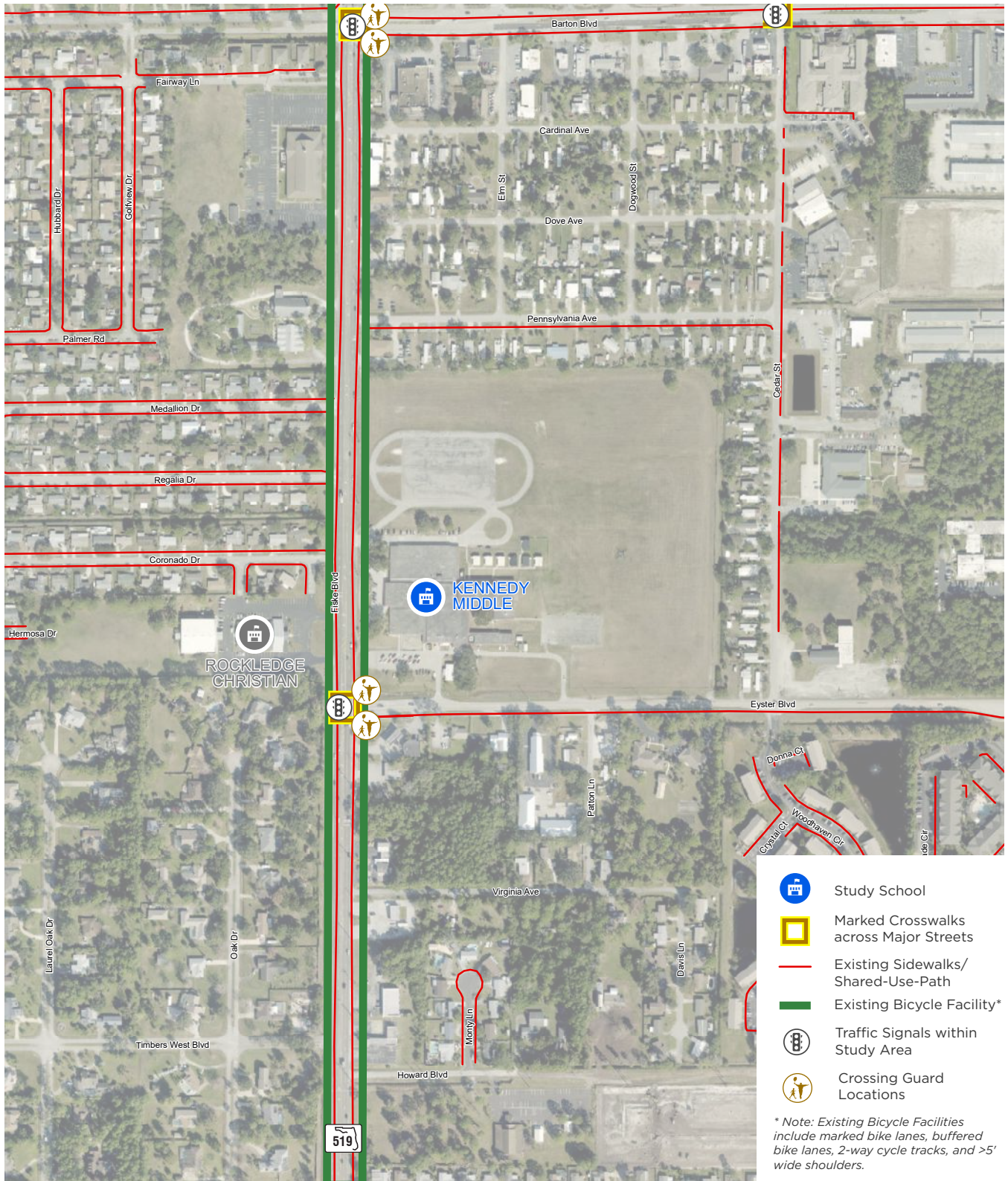
**Figure 1: Background Information**  
School Routes Analysis  
**Kennedy Middle School**





**Figure 2: Existing and Planned Pedestrian and Bicycle Facilities**  
 School Routes Analysis  
**Kennedy Middle School**

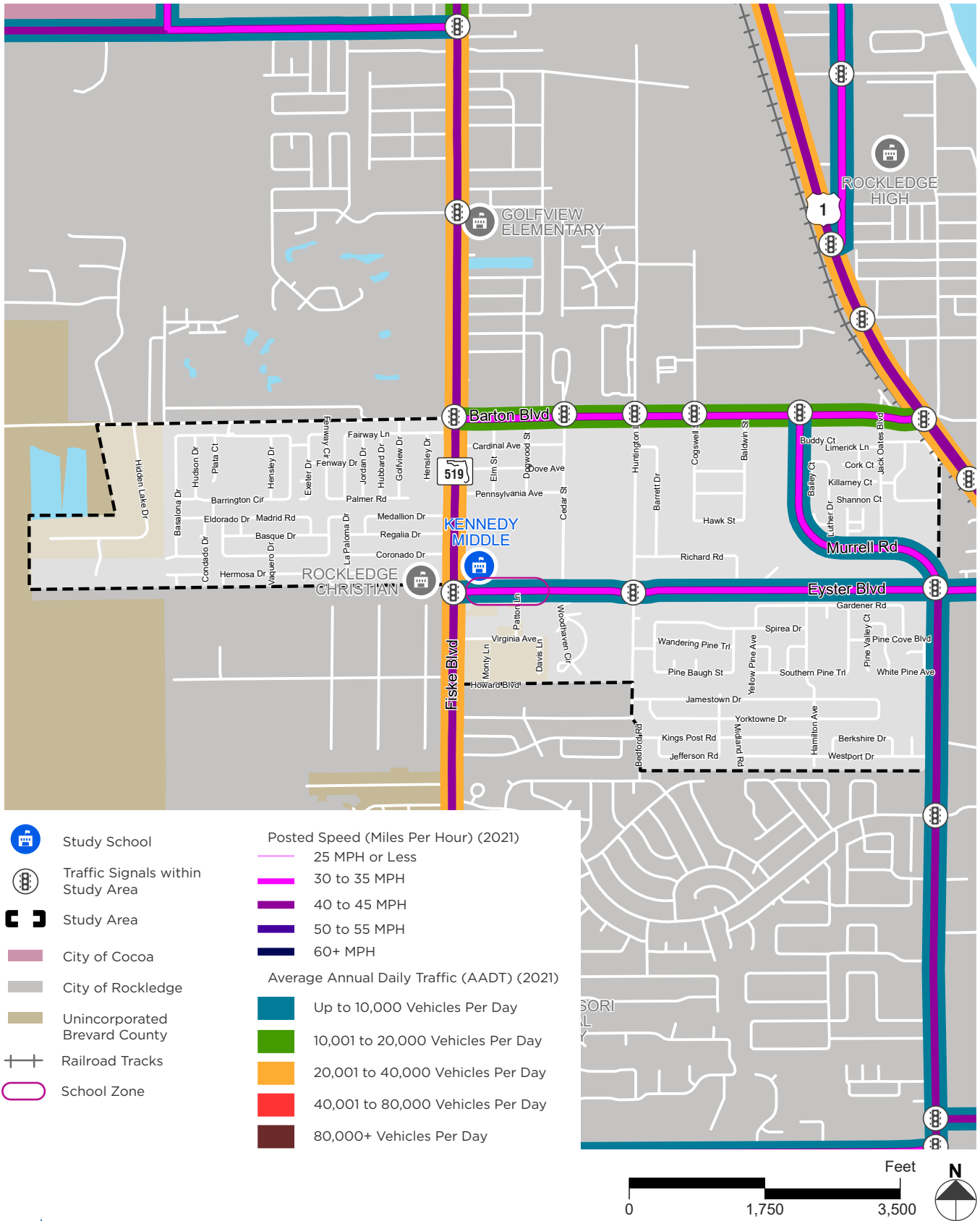




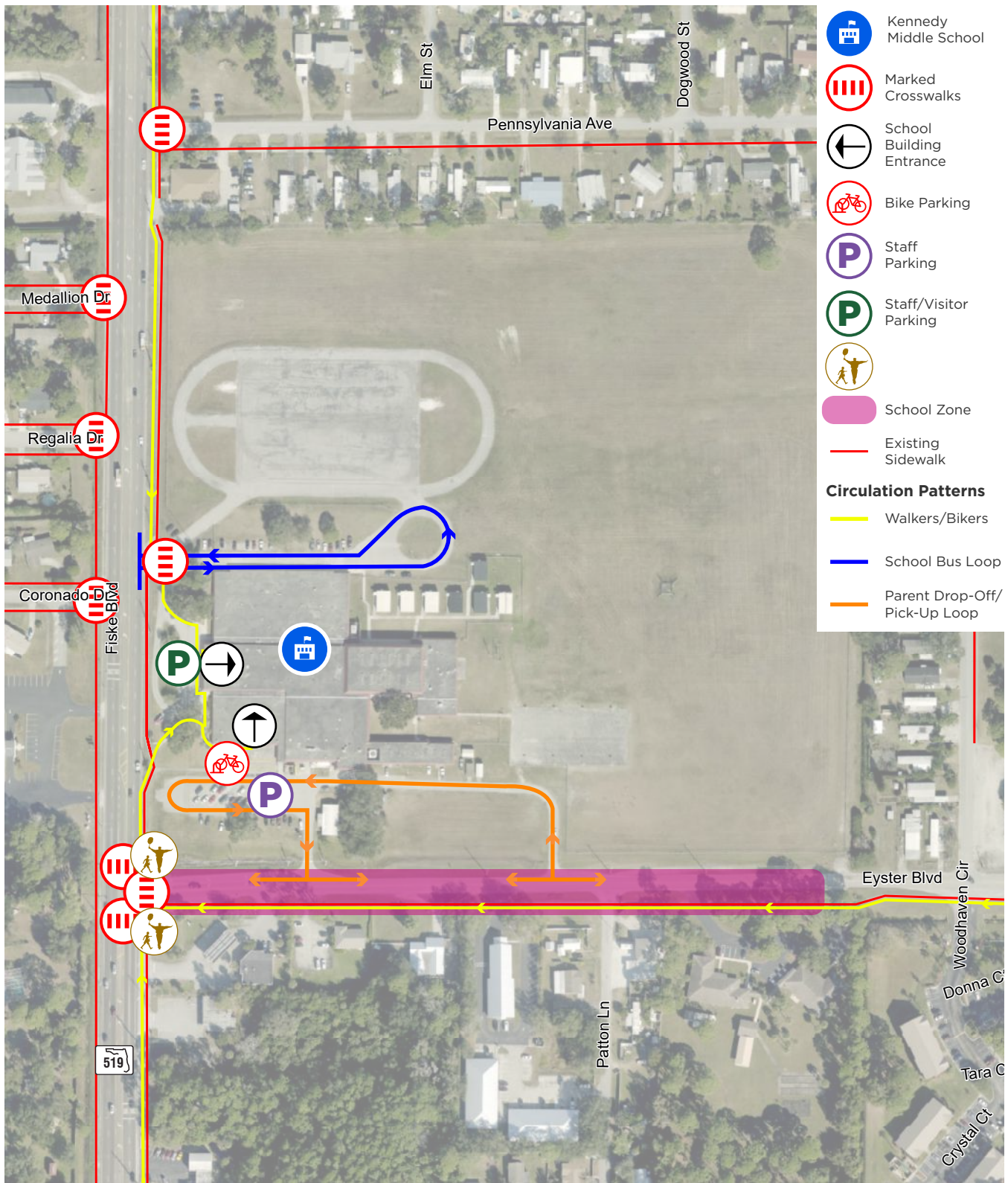
0 500 1,000 Feet

**Figure 3: School Context Aerial**  
**School Routes Analysis**  
**Kennedy Middle School**



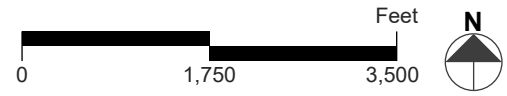
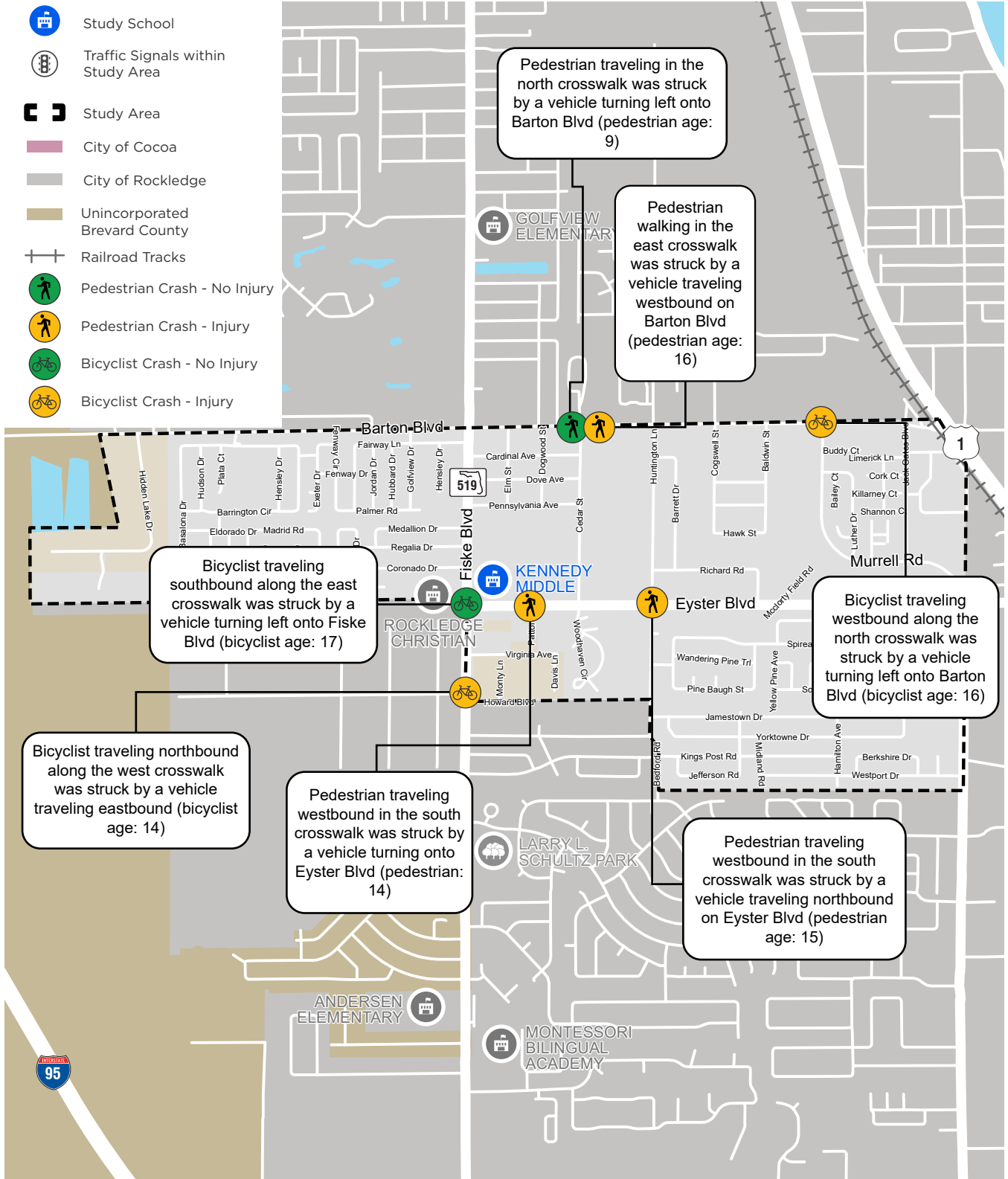


**Figure 4: Existing Conditions Traffic Data  
School Routes Analysis  
Kennedy Middle School**



**Figure 5: Existing School Circulation Map**  
 School Routes Analysis  
**Kennedy Middle School**





**Figure 6: School Aged Pedestrian and Bicycle Crashes (August 2016 to July 2022)**  
 School Routes Analysis  
**Kennedy Middle School**



## School Campus Recommendations

No.	Location	Recommendation	Type	Time-Frame	Cost Estimate
1	Parent Drop-Off/Pick-Up Loop	Brevard Public Schools has plans to reconstruct the parent drop-off/pick-up loop and move the entrance to the east side of the school campus (the concept plans are attached in Appendix A). As a part of this effort or after it has been completed, construct a new sidewalk from the southern entrance to the school campus around the new parent drop-off/pick-up loop to Eyster Boulevard.	Sidewalk	Near-Term	\$140,000 to \$160,000

## Study Area Recommendations

No.	Location	Recommendation	Type	Time-Frame	Cost Estimate
2	School Driveway along SR 519 (Fiske Boulevard)	Add a crossing guard during morning and afternoon peak-periods to guide students walking and biking to the school.	Crossing	Near-Term	Enforcement
3	North Side of Eyster Boulevard	Fill sidewalk gap along the north side of Eyster Boulevard. Add high-visibility crosswalks at school driveways.	Sidewalk	Long-Term	\$900,000 to \$1,100,000
4	Eyster Boulevard & Cedar Street	Add a crosswalk with Rectangular Rapid Flashing Beacons (RRFB) across the west leg of the intersection to provide a crossing opportunity for students walking and biking to enter the school campus. This recommendation is intended to be implemented with or after Project 3.	Crossing	Near-Term	\$50,000 to \$60,000
5	Murrell Road	Fill sidewalk gap prioritized in the 2019 SCTPO Bicycle & Pedestrian Master Plan on the east side of Murrell Road from Levitt Parkway to Eyster Boulevard.	Sidewalk	Long-Term	\$410,000 to \$480,000
6	Eyster Boulevard	Add flashing beacon signage at the school zone along Eyster Boulevard. Restripe pavement markings and add advance school zone warning signs.	Sign/Signal	Near-Term	\$35,000 to \$40,000
7	Eyster Boulevard and Murrell Road	Install/upgrade pedestrian ramps that meet current standards along: <ul style="list-style-type: none"> <li>• Eyster Boulevard from SR 519 (Fiske Boulevard) to Murrell Road; and</li> <li>• Murrell Road from Study Area Boundary to Barton Boulevard.</li> </ul>	Sidewalk	Near-Term	\$165,000 to \$190,000

**Table 1: Recommendations Summary**  
 School Routes Analysis  
**Kennedy Middle School**





## Study Area Recommendations

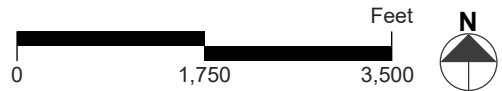
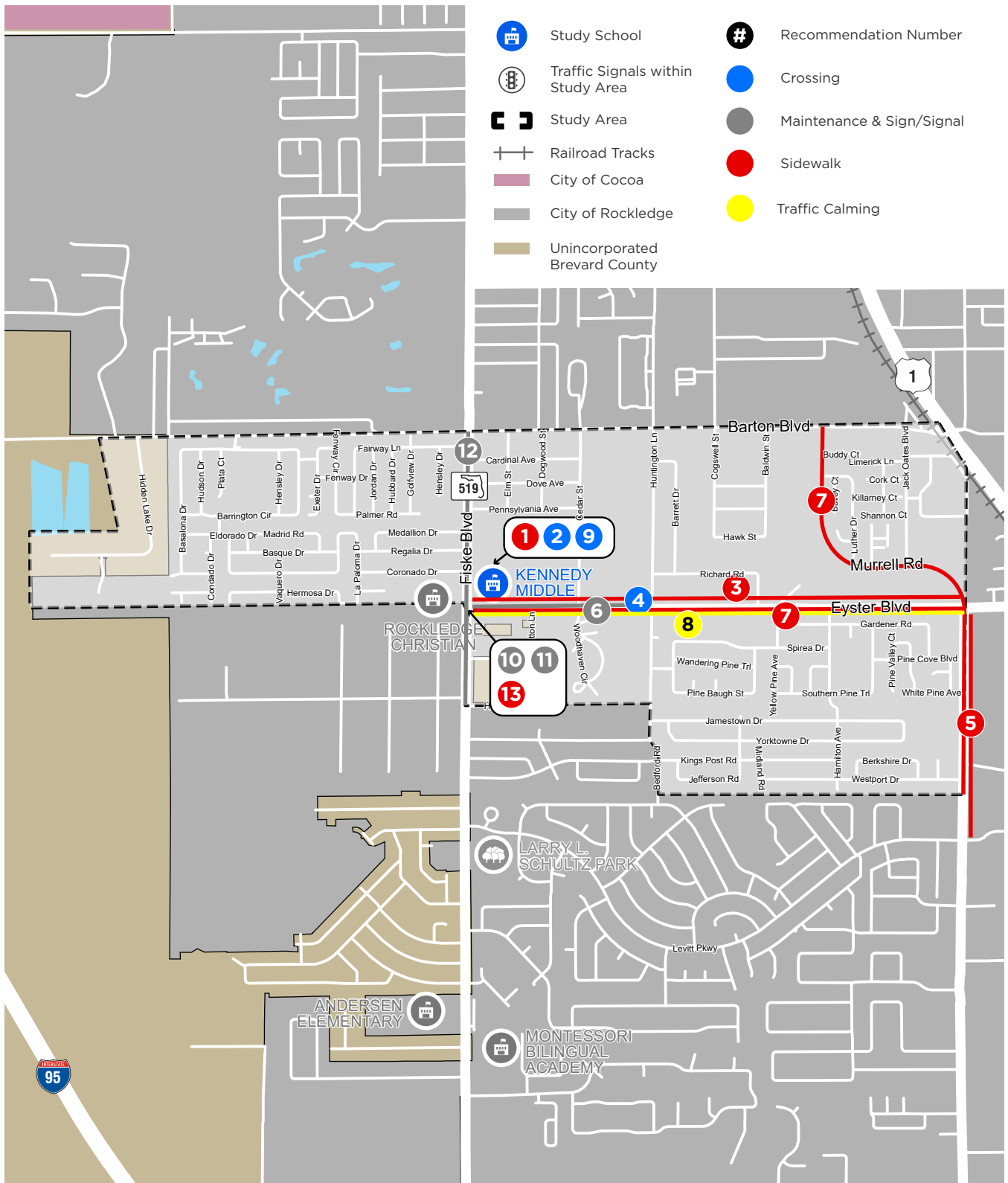
No.	Location	Recommendation	Type	Time-Frame	Cost Estimate
8	Eyster Boulevard from SR 519 (Fiske Boulevard) to Murrell Road	Conduct a speed study and if justified, reduce the speed limit along Eyster Boulevard to 30 MPH. Implement raised crosswalks and/or speed humps to reduce vehicle speeds and provide places for pedestrians and bicyclists to cross Eyster Boulevard.	Traffic Calming/ Crossing	Long-Term	Further Study Required to Conduct Speed Study
9	School Campus	Restripe high-visibility crosswalk at northern school driveway along SR 519 (Fiske Boulevard) where sidewalks are present.	Crossing	Maintenance	<\$10,000
10	SR 519 (Fiske Boulevard) & Eyster Boulevard	Implement a pedestrian scramble/ Barnes' Dance to provide an all-pedestrian phase during the afternoon peak-period. This will allow the large number of bicyclists and pedestrians to clear the intersection during one cycle. Also add a leading pedestrian interval (LPI) during the morning and afternoon peak-periods to increase driver's awareness of pedestrians and bicyclists crossing the intersection.	Sign/Signal	Maintenance	Maintenance
11	SR 519 (Fiske Boulevard) & Eyster Boulevard	Implement "No Right Turn on Red" and LED "Turning Vehicles Yield to Pedestrians" signage at the northbound and westbound right turn movements during morning and afternoon drop-off/pick-up times.	Sign/Signal	Near-Term	\$30,000 to \$40,000
12	SR 519 (Fiske Boulevard)	Conduct a school zone analysis to determine if a school zone is justified along SR 519 (Fiske Boulevard) near the school campus. If justified, add flashing beacon signage along SR 519 (Fiske Boulevard). Restripe pavement markings and add advance school zone warning signs.	Sign/Signal	Near-Term	Further Study Required for School Zone Analysis
13	SR 519 (Fiske Boulevard) & Eyster Boulevard	Expand the landing area in the northeast corner of the intersection to provide more space for pedestrians and bicyclists waiting to cross the intersection. Construct a railing along the curb to prevent pedestrians and bicyclists from entering the intersection while waiting to cross.	Sidewalk	Near-Term	\$25,000 to \$30,000

**Table 1: Recommendations Summary Cont.**

School Routes Analysis

**Kennedy Middle School**

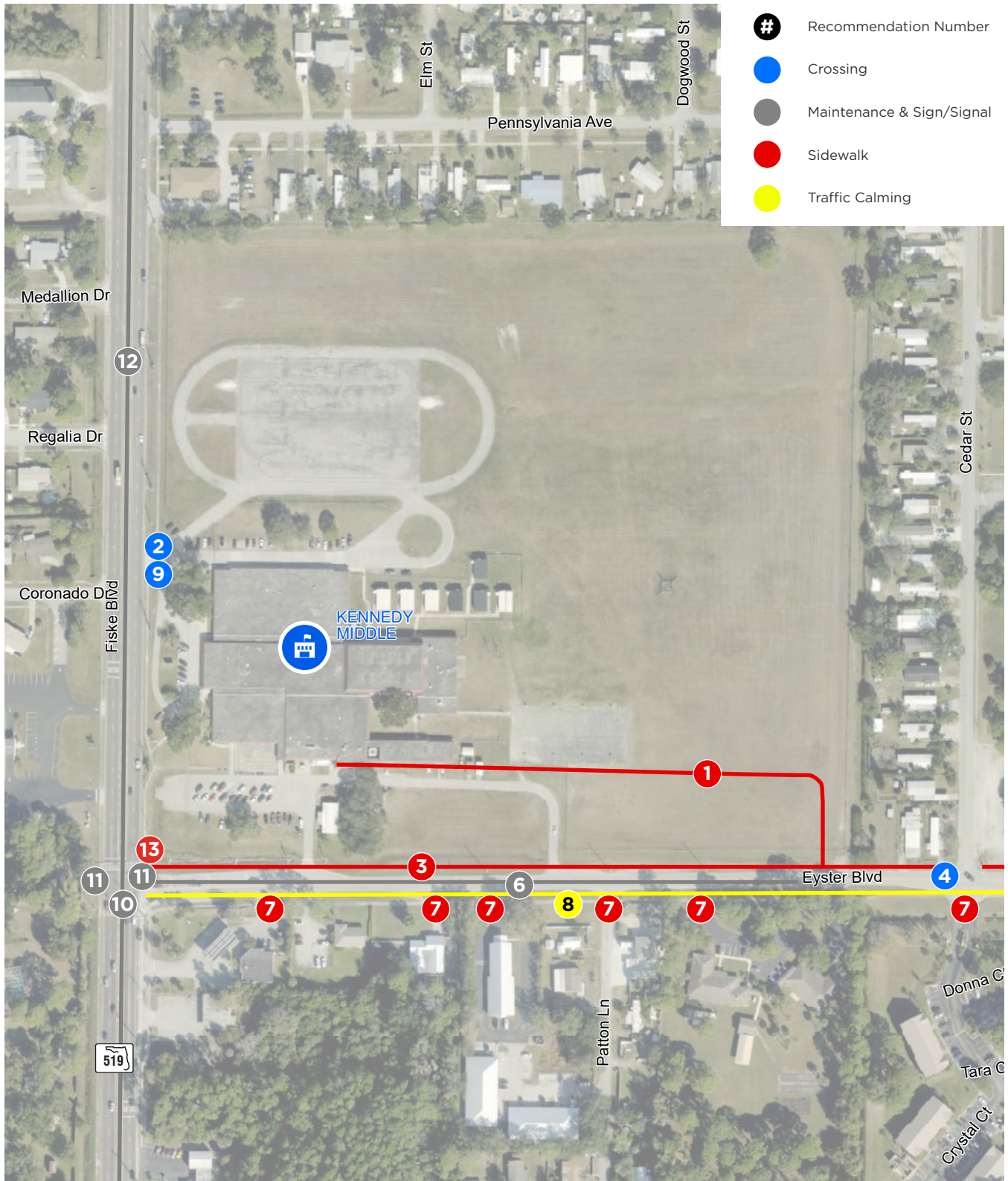




**Figure 7: Recommendations**  
 School Routes Analysis  
**Kennedy Middle School**







- Recommendation Number
- Crossing
- Maintenance & Sign/Signal
- Sidewalk
- Traffic Calming



**Figure 8: Recommendations: School Campus Aerial Map**  
 School Routes Analysis  
**Kennedy Middle School**



**Prepared For:**



2725 Judge Fran Jamieson Way,  
Bldg. B, Room 105,  
Melbourne, FL 32940

**Prepared By:**



225 E Robinson Street,  
Suite 355,  
Orlando, FL 32801