



# Regional Intermodal Connections Committee Laying the Foundation

**Objective of Meeting:** Identifying what Brevard has to offer and opportunities for enhancing our community connections and transportation system.

## Strengths - Brevard's Bests:



Explore Environmental Treasures

Climate, Indian River Lagoon, Nature



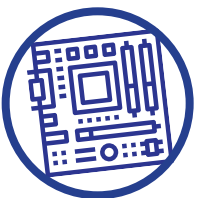
Experience Beyond Earth

NASA, KSC, Rocket Launches



Sail the High Seas and Fish the Local Waters

Port Canaveral, Fishing, Recreation



High Tech Industries

Aerospace & Defense Industries,  
Melbourne Airport



Beaches & Major Destinations

Brevard Zoo, Downtowns

## We are here!



How do we move into the future?



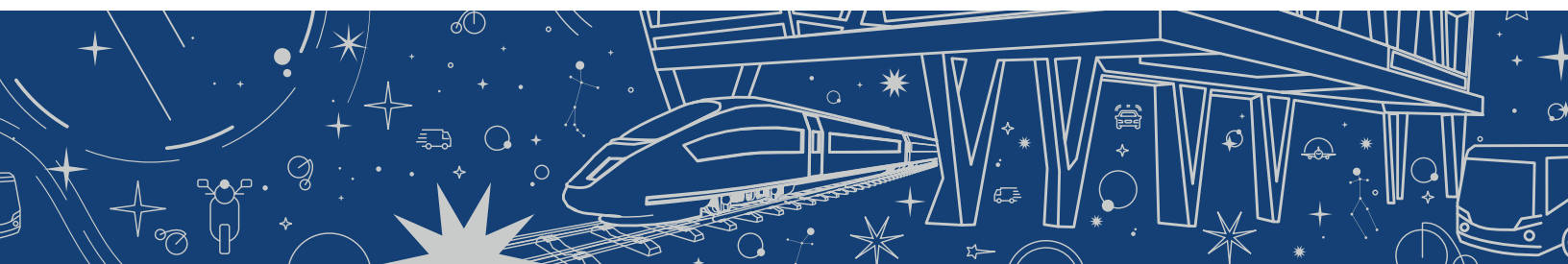
How do we get there?



Where do we want to go?



What this would provide?



## Envisioning the Future...



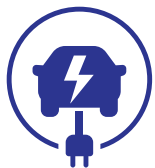
## Unique “Small Towns” with Multimodal Connectivity



Investing in our Future



Premium Transit



Electric Vehicles and Other Technologies



Wider Sidewalks and Regional Trails



Landscaping & Aesthetics

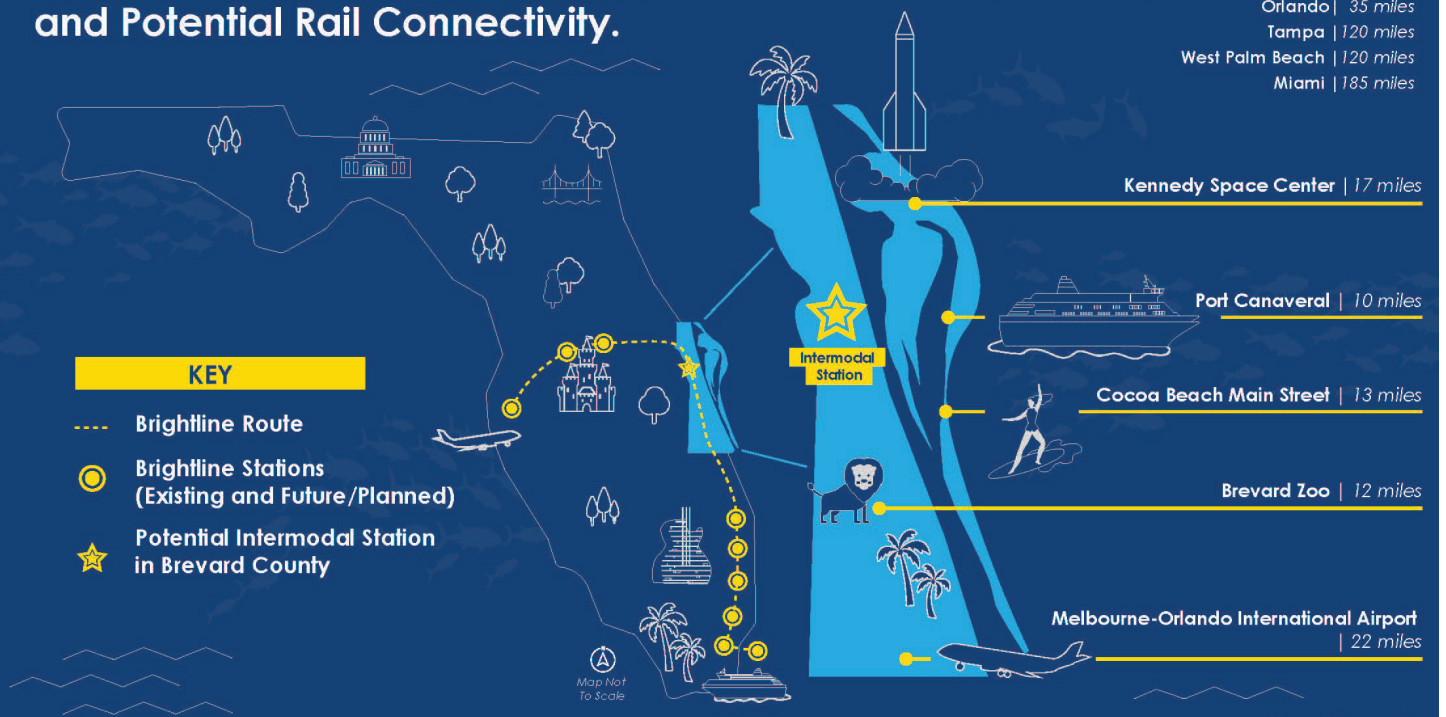


Bikable Communities

## Brevard County Prime Destinations and Potential Rail Connectivity.

**Distance from potential intermodal station:**

- Orlando | 35 miles
- Tampa | 120 miles
- West Palm Beach | 120 miles
- Miami | 185 miles



**KEY**

- Brightline Route
- Brightline Stations (Existing and Future/Planned)
- ★ Potential Intermodal Station in Brevard County

Map Not To Scale