

Sociocultural Data Report

Sarno Road Corridor - Feature 1

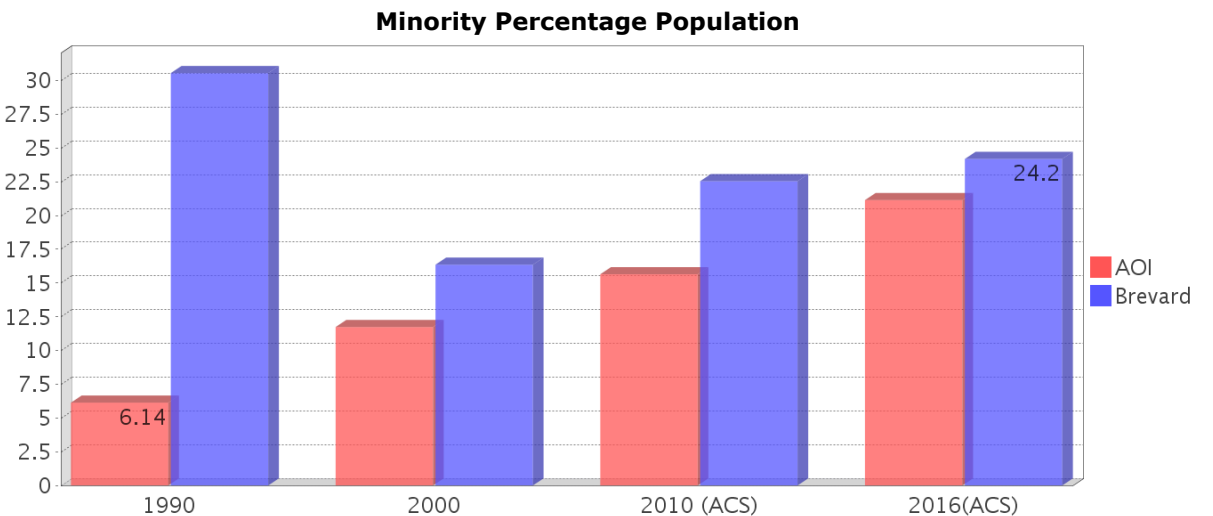
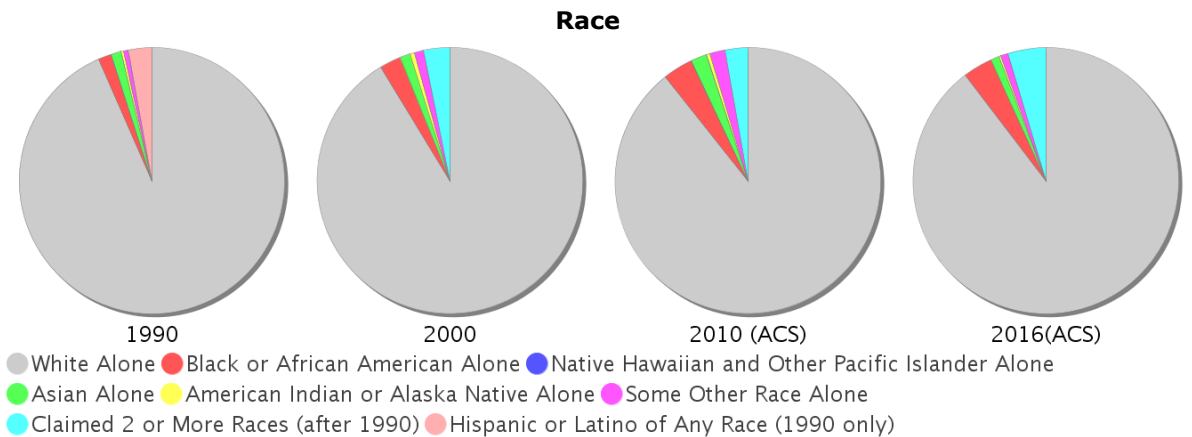
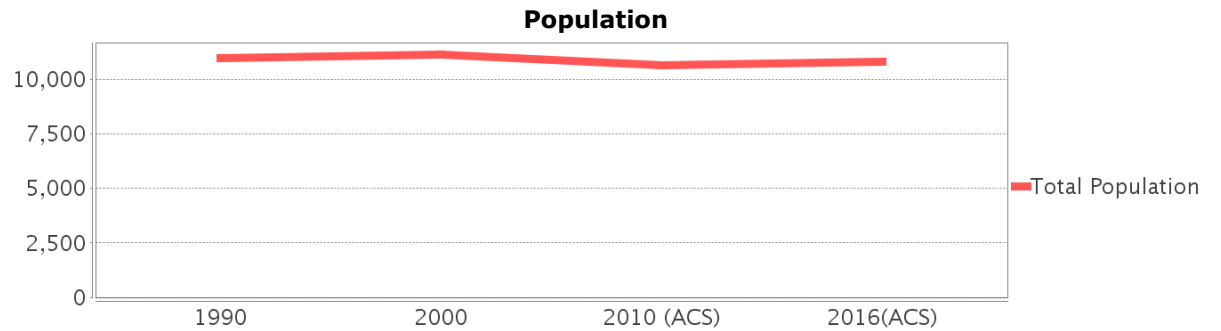
Area: 4.409 square miles
Jurisdiction(s): **Cities:** Melbourne
Counties: Brevard

General Population Trends

Description	1990	2000	2010 (ACS)	2016(ACS)
Total Population	10,965	11,125	10,635	10,796
Total Households	4,507	4,870	4,674	4,594
Average Persons per Acre	5.05	4.47	5.15	5.55
Average Persons per Household	2.36	2.22	2.17	2.30
Average Persons per Family	2.83	2.84	2.92	3.12
Males	5,318	5,408	5,269	5,224
Females	5,646	5,717	5,367	5,572

Race and Ethnicity Trends

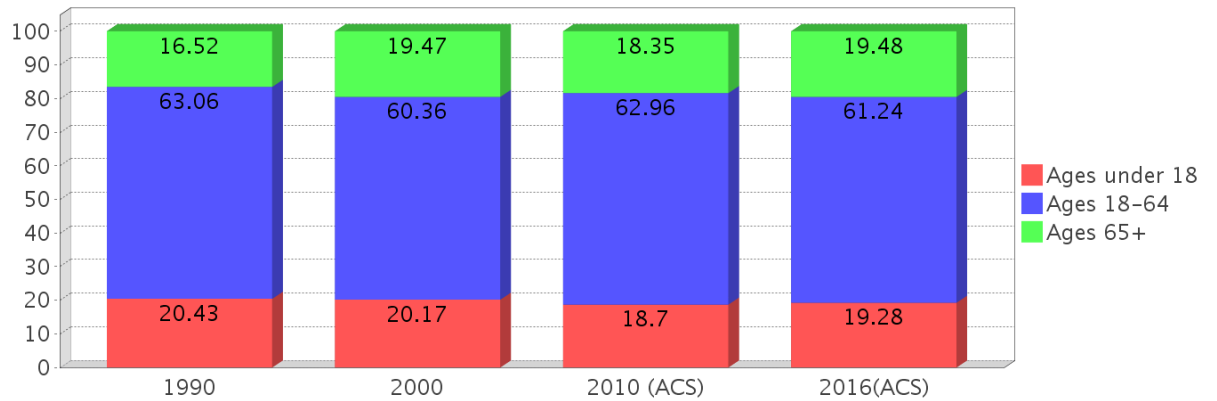
Description	1990	2000	2010 (ACS)	2016(ACS)
White Alone	10,538 (96.11%)	10,155 (91.28%)	9,494 (89.27%)	9,672 (89.59%)
Black or African American Alone	184 (1.68%)	284 (2.55%)	389 (3.66%)	388 (3.59%)
Native Hawaiian and Other Pacific Islander Alone	1 (0.01%)	0 (0.00%)	6 (0.06%)	0 (0.00%)
Asian Alone	141 (1.29%)	143 (1.29%)	210 (1.97%)	112 (1.04%)
American Indian or Alaska Native Alone	34 (0.31%)	63 (0.57%)	47 (0.44%)	25 (0.23%)
Some Other Race Alone	66 (0.60%)	124 (1.11%)	192 (1.81%)	99 (0.92%)
Claimed 2 or More Races	NA (NA)	356 (3.20%)	297 (2.79%)	499 (4.62%)
Hispanic or Latino of Any Race	320 (2.92%)	511 (4.59%)	818 (7.69%)	1,290 (11.95%)
Not Hispanic or Latino	10,645 (97.08%)	10,614 (95.41%)	9,817 (92.31%)	9,506 (88.05%)
Minority	673 (6.14%)	1,306 (11.74%)	1,664 (15.65%)	2,283 (21.15%)



Age Trends

Description	1990	2000	2010 (ACS)	2016(ACS)
Under Age 5	5.91%	5.49%	5.12%	5.84%
Ages 5-17	14.52%	14.68%	13.59%	13.44%
Ages 18-21	4.87%	3.73%	4.74%	3.02%
Ages 22-29	14.53%	8.70%	10.63%	10.05%
Ages 30-39	15.31%	15.79%	11.67%	11.44%
Ages 40-49	11.97%	15.06%	15.28%	13.02%
Ages 50-64	16.38%	17.08%	20.64%	23.71%
Age 65 and Over	16.52%	19.47%	18.35%	19.48%
-Ages 65-74	10.72%	10.56%	9.06%	10.75%
-Ages 75-84	4.85%	6.99%	6.70%	5.81%
-Age 85 and Over	0.95%	1.91%	2.58%	2.91%
Median Age	NA	41	44	46

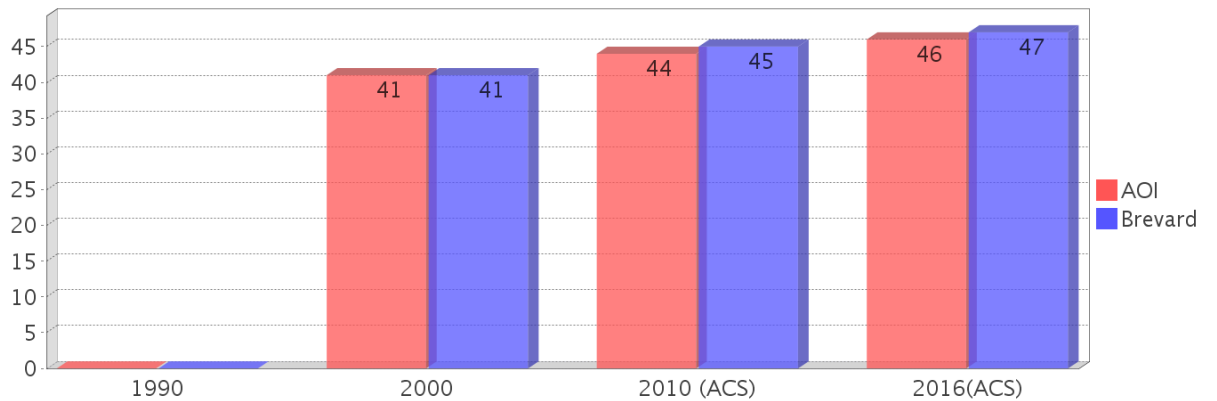
Population by Age Group



Income Trends

Description	1990	2000	2010 (ACS)	2016(ACS)
Median Household Income	\$27,934	\$34,832	\$36,297	\$38,752
Median Family Income	\$31,685	\$42,228	\$49,787	NA
Population below Poverty Level	6.49%	8.31%	11.19%	21.00%
Households below Poverty Level	6.21%	8.48%	12.71%	20.07%
Households with Public Assistance Income	3.42%	2.34%	1.88%	4.88%

Median Age Comparison

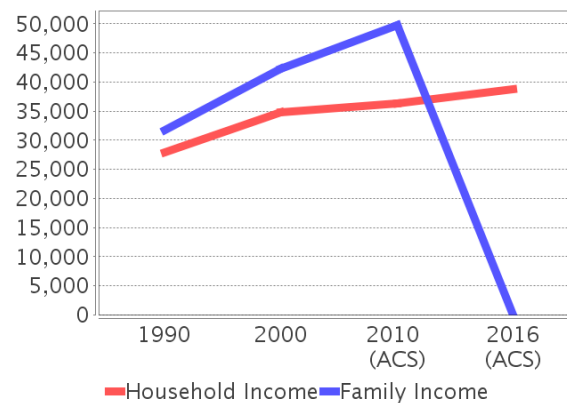


Disability Trends

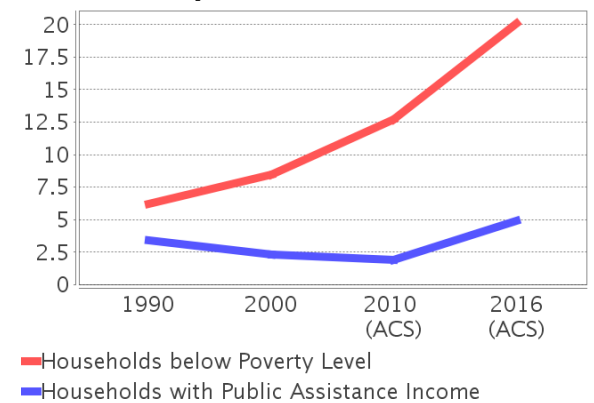
See the Data Sources section below for an explanation about the differences in disability data among the various years.

Description	1990	2000	2010 (ACS)	2016(ACS)
Population 16 To 64 Years with a disability	841 (9.30%)	1464 (14.13%)	(NA)	(NA)
Population 20 To 64 Years with a disability	(NA)	(NA)	(NA)	838 (12.93%)

Income Trends



Poverty and Public Assistance



Educational Attainment Trends

Age 25 and Over

Description	1990	2000	2010 (ACS)	2016(ACS)
Less than 9th Grade	349 (4.54%)	242 (2.99%)	204 (2.54%)	247 (3.06%)
9th to 12th Grade, No Diploma	1,042 (13.55%)	863 (10.66%)	627 (7.81%)	614 (7.62%)
High School Graduate or Higher	6,297 (81.91%)	6,987 (86.33%)	7,198 (89.65%)	7,200 (89.32%)
Bachelor's Degree or Higher	1,121 (14.58%)	1,265 (15.63%)	1,503 (18.72%)	1,619 (20.08%)

Language Trends

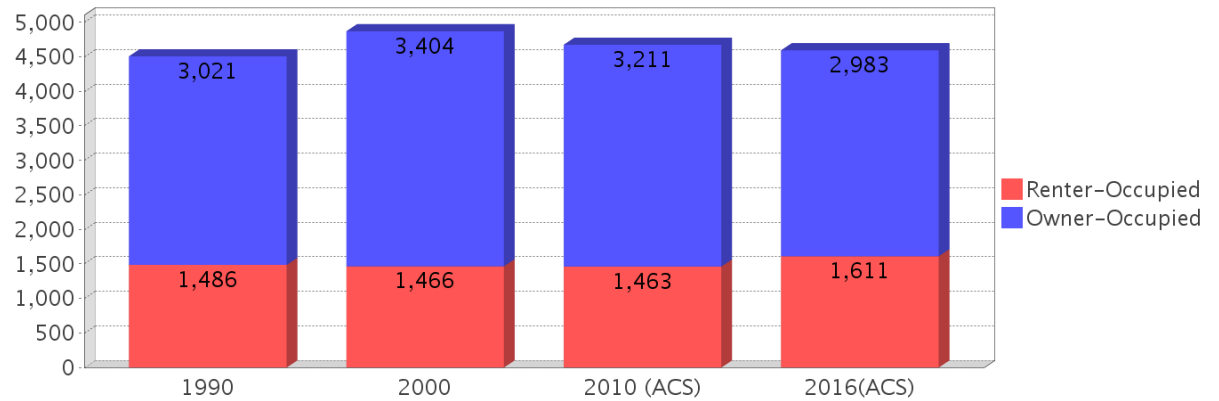
Age 5 and Over

Description	1990	2000	2010 (ACS)	2016(ACS)
Speaks English Well	139 (1.34%)	204 (1.94%)	220 (2.12%)	245 (2.41%)
Speaks English Not Well	NA (NA)	104 (0.99%)	95 (0.92%)	95 (0.93%)
Speaks English Not at All	NA (NA)	11 (0.10%)	2 (0.02%)	83 (0.82%)
Speaks English Not Well or Not at All	118 (1.14%)	115 (1.09%)	97 (0.94%)	178 (1.75%)

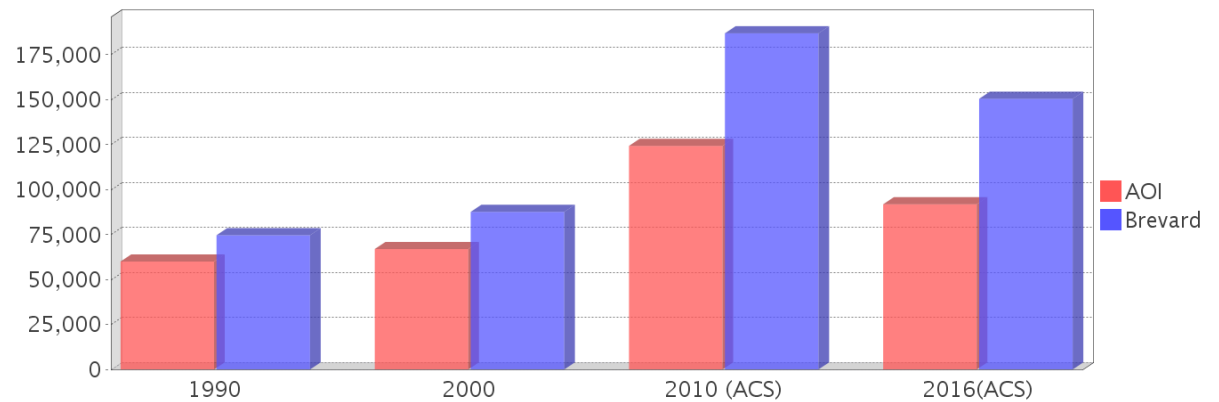
Housing Trends

Description	1990	2000	2010 (ACS)	2016(ACS)
Total	4,778	5,321	5,229	5,300
Units per Acre	2.19	2.07	2.50	2.54
Single-Family Units	3,389	3,691	4,063	3,837
Multi-Family Units	999	1,255	1,150	1,238
Mobile Home Units	98	338	274	221
Owner-Occupied Units	3,021	3,404	3,211	2,983
Renter-Occupied Units	1,486	1,466	1,463	1,611
Vacant Units	271	451	555	706
Median Housing Value	\$60,000	\$66,950	\$124,300	\$91,850
Occupied Housing Units w/No Vehicle	212 (4.70%)	267 (5.48%)	229 (4.90%)	232 (5.05%)

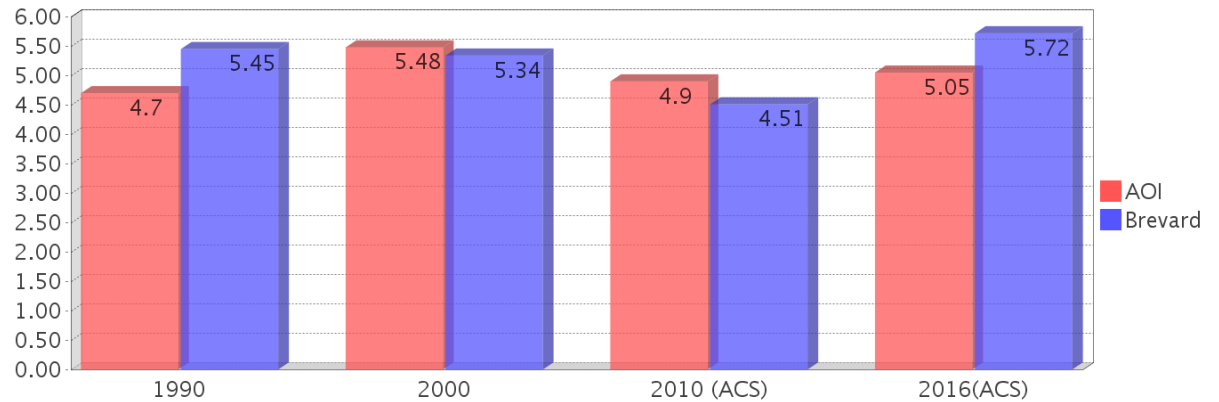
Housing Tenure



Median Housing Value Comparison

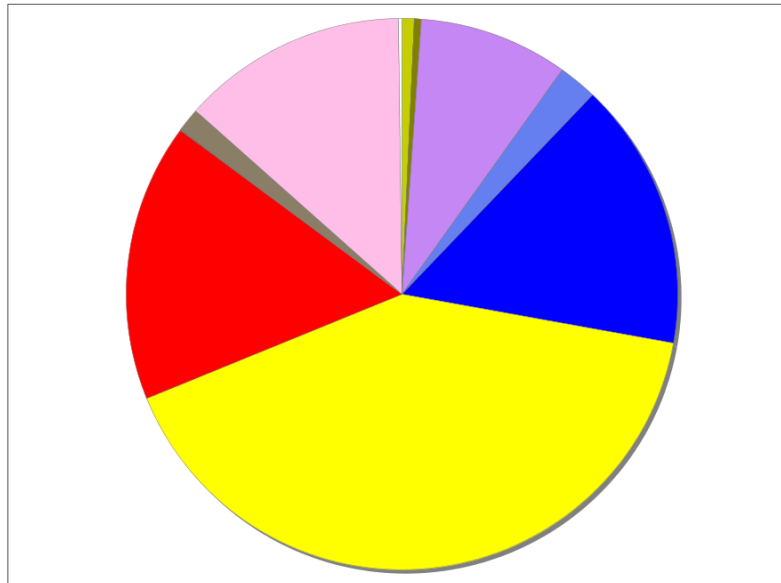


Occupied Units With No Vehicles Available



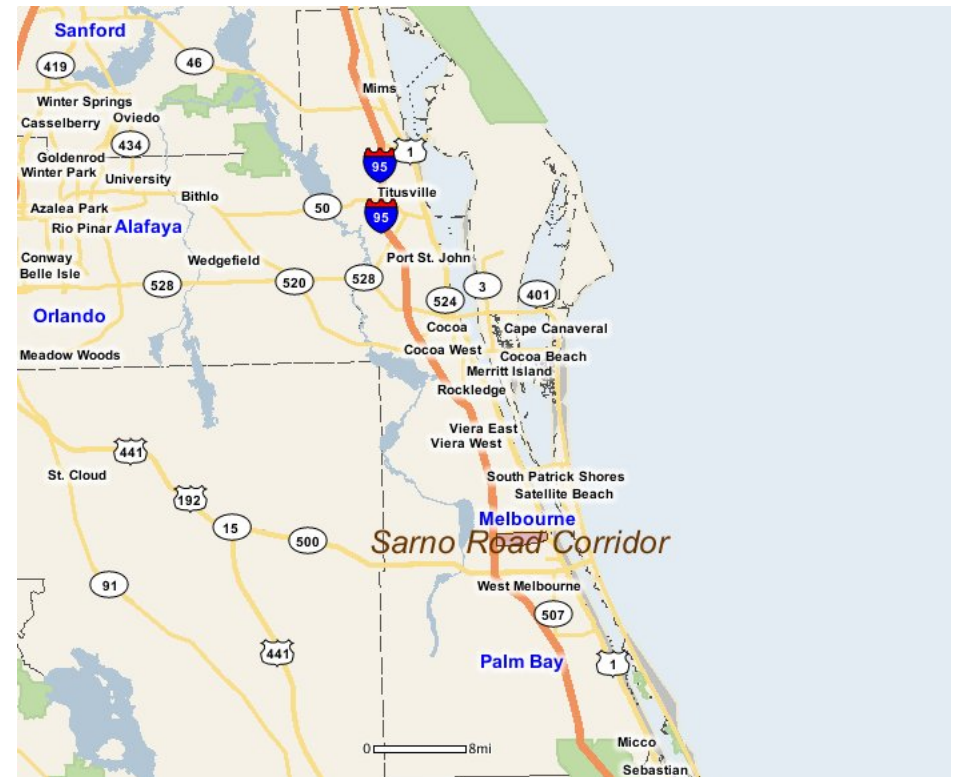
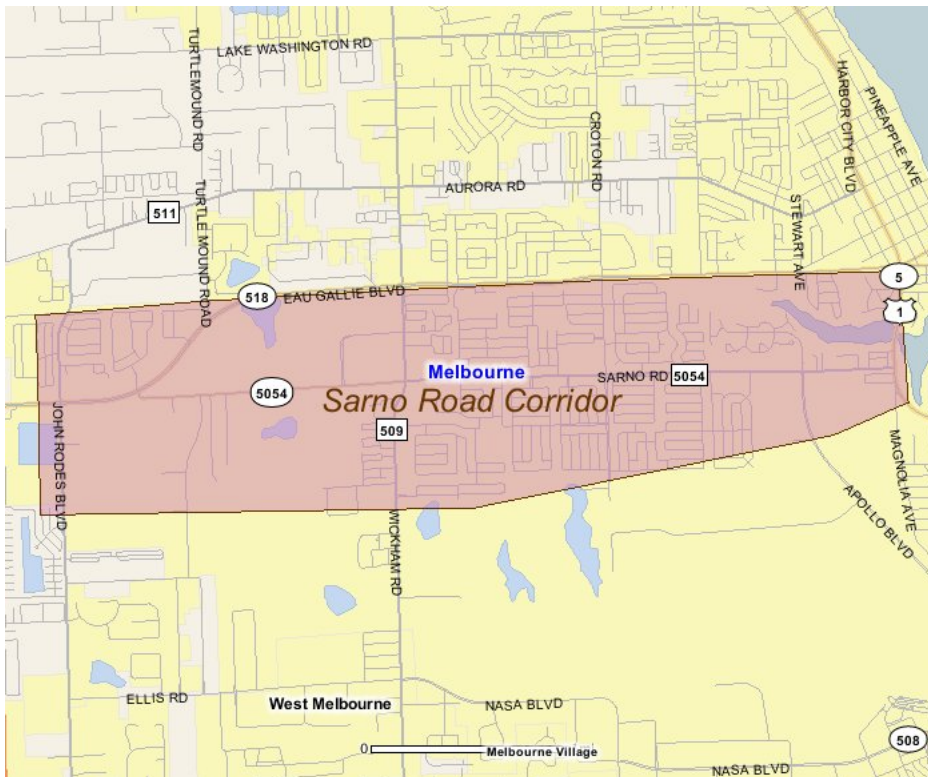
Existing Land Use

Land Use Type	Acres	Percentage
Acreage Not Zoned For Agriculture	17	0.60%
Agricultural	0	0.00%
Centrally Assessed	10	0.35%
Industrial	213	7.55%
Institutional	55	1.95%
Mining	0	0.00%
Other	<0.5	<0.02%
Public/Semi-Public	381	13.50%
Recreation	0	0.00%
Residential	995	35.27%
Retail/Office	396	14.04%
Row	1	0.04%
Vacant Residential	34	1.21%
Vacant Nonresidential	321	11.38%
Water	0	0.00%
Parcels With No Values	5	0.18%



- Acreage Not Zoned For Agriculture
- Agricultural
- Centrally Assessed
- Industrial
- Institutional
- Mining
- Other
- Public/Semi-Public
- Recreation
- Residential
- Retail/Office
- Row
- Vacant Residential
- Vacant Nonresidential
- Water
- Parcels With No Values

Location Maps



Community Facilities

The community facilities information below is useful in a variety of ways for environmental evaluations. These community resources should be evaluated for potential sociocultural effects, such as accessibility and relocation potential. The facility types may indicate the types of population groups present in the project study area. Facility staff and leaders can be sources of community information such as who uses the facility and how it is used. Additionally, community facilities are potential public meeting venues.

Assisted Housing (Points)

Facility Name	Address	Zip Code
THE HARBOR APARTMENTS	1031 HIDDEN HARBOUR DRIVE	32935
ABILITIES AT ENGLISH PARK	1225 N WICKHAM RD	32935
SABAL PALMS	3001 FOUNTAINHEAD CIRCLE	32934

Community Centers (Points)

Facility Name	Address	Zip Code
BOY SCOUTS OF AMERICA - MELBOURNE	1270 N WICKHAM RD	32935
AZAN SHRINE TEMPLE	1591 W EAU GALLIE BLVD	32935

Fire Stations (Points)

Facility Name	Address	Zip Code
MELBOURNE FIRE DEPARTMENT STATION 71	865 W EAU GALLIE BLVD	32935
MELBOURNE FIRE DEPARTMENT STATION 72	2937 SARNO RD	32935

Florida Parks and Recreational Facilities (Points)

Facility Name	Address	Zip Code
JIMMY MOORE PARK	2987 SARNO RD	32935
BOWE GARDENS PARK (UNDEVELOPED)	ISABELLA DR & W EAU GALLIE BLVD	32935
OXFORD RIDGE PARK	876 CROTON RD	32935
SUNSET PARK	850 SUNSET DR	32935

Government Building

Facility Name	Address	Zip Code
BREVARD COUNTY PROPERTY APPRAISER	1515 SARNO RD	32935
BREVARD COUNTY SUPERVISOR OF ELECTIONS	1515 SARNO RD	32935
BREVARD COUNTY TAX COLLECTOR - MELBOURNE BRANCH OFFICE	1515 SARNO RD	32935
U S POST OFFICE - APOLLO ANNEX	680 N APOLLO BLVD	32935

Healthcare Facilities (Geocoded)

Facility Name	Address	Zip Code
JAY E OLSSON, DO, PA	401 N WICKHAM ROAD, SUITE S	32935
JAMES D. KEARNEY, MD	580 N WICKHAM ROAD, SUITE A	32935
MEDICAL ASSOCIATES OF BREVARD	397 N WICKHAM ROAD, SUITE 101	32935
MEDICAL ASSOC OF BREVARD LLC-GREGORY WASER, MD	1801 SARNO ROAD, SUITE 6	32935
ROSSIGNOL MEDICAL CENTER	3800 W EAU GALLIE BOULEVARD	32934
CONSULATE HEALTH CARE OF MELBOURNE	3033 SARNO ROAD	32934
ESTHER CLAYTON, MD, GYNECOLOGY	410 N WICKHAM ROAD, SUITE 201	32935
POONAM MISHRA, DO	401 N WICKHAM ROAD, SUITE H	32935
CHRISTINE THOMAS, MD	2571 W EAU GALLIE BOULEVARD, SUITE 1	32935
KAPLAN COSMETIC SURGERY, INC	2351 W EAU GALLIE BOULEVARD	32935
BREVARD HEALTH ALLIANCE	2120 SARNO ROAD	32934
BEACHSIDE DERMATOLOGY	2571 W EAU GALLIE BOULEVARD, SUITE 2	32901
JAY MEDICAL, PLLC	3972 W EAU GALLIE BOULEVARD	32934

Law Enforcement Facilities (Points)

Facility Name	Address	Zip Code
MELBOURNE POLICE DEPARTMENT	650 NORTH APOLLO BOULEVARD	32935

Facility Name	Address	Zip Code
BREVARD COUNTY SHERIFF'S OFFICE - ANIMAL CONTROL	1515 SARNO ROAD	32935

Public and Private Schools (Points)

Facility Name	Address	Zip Code
EMBRY-RIDDLE AERONAUTICAL UNIVERSITY - SPACE COAST	4450 W EAU GALLIE BLVD	32934
NO LIMITS ACADEMY INC	4450 W EAU GALLIE BLVD	32934
HARBOR CITY ELEMENTARY SCHOOL	1377 SARNO RD	32935
EVEREST UNIVERSITY	2190 SARNO RD	32935
RISING STARS ACADEMY	2155 SARNO RD	32935
ROY ALLEN ELEMENTARY SCHOOL	2601 FOUNTAINHEAD BLVD	32935
SANCTA FAMILIA ACADEMY	1204 N HARBOR CITY BLVD	32935

Religious Centers (Points)

Facility Name	Address	Zip Code
BOWE GARDENS BAPTIST CHURCH	2700 SARNO ROAD	32935
CHURCH OF CHRIST	1079 SARNO ROAD	32935
NEW LIFE ASSEMBLY OF GOD	770 N APOLLO BOULEVARD	32935
EAU GALLIE FIRST BAPTIST CHURCH	1501 WEST EAU GALLIE BLVD	32935
VINEYARD CHRISTIAN FELLOWSHIP	1052 CYPRESS AVENUE	32935

Social Services (Geocoded)

Facility Name	Address	Zip Code
FLORIDA ADOPTION CENTER LLC	1600 SARNO ROAD	32935
BREVARD FAMILY PARTNERSHIP	2301 W. EAU GALLIE BLVD	32935

US Census Places

Facility Name

Melbourne

Veteran Organizations and Facilities (Points)

Facility Name	Address	Zip Code
VETERANS AFFAIRS VET CENTER MELBOURNE	2098 SARNO ROAD	32935

Block Groups

The following Census Block Groups were used to calculate demographics for this report.

1990 Census Block Groups

120090641213, 120090645002, 120090642006, 120090643024, 120090642007, 120090644001, 120090643023, 120090647001, 120090646002, 120090644002, 120090646003

2000 Census Block Groups

120090645002, 120090644002, 120090642005, 120090641214, 120090646001, 120090643023, 120090642004, 120090643024, 120090646002, 120090647001, 120090641213, 120090644001

2010 Census Block Groups

120090645002, 120090642011, 120090644003, 120090644001, 120090646021, 120090641252, 120090645001, 120090644002, 120090646022, 120090643023, 120090647002, 120090641253

2016 Census Block Groups

120090641253, 120090644003, 120090647002, 120090643023, 120090646022, 120090645002, 120090644002, 120090642011, 120090641252, 120090644001, 120090646021, 120090645001

Data Sources

Area

The geographic area of the community based on a user-specified community boundary or area of interest (AOI) boundary.

Jurisdiction

Jurisdiction(s) includes local government boundaries that intersect the community or AOI boundary.

Demographic Data

Demographic data reported under the headings General Population Trends, Race and Ethnicity Trends, Age Trends, Income Trends, Educational Attainment Trends, Language Trends, and Housing Trends is from the U.S. Decennial Census (1990, 2000) and the American Community Survey (ACS) 5-year estimates from 2006-2010 and 2012-2016. The data was gathered at the block group level for user-specified community boundaries and AOIs, and at the county level for counties. Depending on the dataset, the data represents 100% counts (Census Summary File 1) or sample-based information (Census Summary File 3 or ACS).

About the Census Data:

User-specified community boundaries and AOIs do not always correspond precisely to block group boundaries. In these instances, adjustment of the geographic area and data for affected block groups is required to estimate the actual population. To improve the accuracy of such estimates in the SDR report, the census block group data was adjusted to exclude all census blocks with a population of two or fewer. These areas were eliminated from the corresponding years' block groups. Next, the portion of the block group that lies outside of the community or AOI boundary was removed. The demographics within each block group were then recalculated, assuming an equal area distribution of the population. Note that there may be areas where there is no population.

Use caution when comparing the 100% count data (Decennial Census) to the sample-based data (ACS). In any given year, about one in 40 or 2.5% of U.S. households will receive the ACS questionnaire. Over any five-year period, about

one in eight households will receive the questionnaire, as compared to about one in six that received the long form questionnaire for the Decennial Census 2000. (Source: <http://mcdc.missouri.edu/pub/data/acs/Readme.shtml>) The U.S. Census Bureau provides help with this process:

<https://www.census.gov/programs-surveys/acs/guidance/comparing-acs-data/2016.html>

Use caution when interpreting changes in Race and Ethnicity over time. Starting with the 2000 Decennial Census, respondents were given a new option of selecting one or more race categories. Also in 2000, the placement of the question about Hispanic origin changed, helping to increase responsiveness to the Hispanic-origin question. Because of these and other changes, the 1990 data on race and ethnicity are not directly comparable with data from later censuses. (Source: <http://www.census.gov/prod/2001pubs/c2kbr01-1.pdf>; <http://www.census.gov/pred/www/rpts/Race%20and%20Ethnicity%20FINAL%20report.pdf>)

The "Minority" calculations are derived from Census and ACS data using both the race and ethnicity responses. On this report, "Minority" refers to individuals who list a race other than White and/or list their ethnicity as Hispanic/Latino. In other words, people who are multi-racial, any single race other than White, or Hispanic/Latino of any race are considered minorities.

Disability data is not included in the 2010 Decennial Census, or the 2006-2010 ACS. This data is available in the 2012-2016 ACS.

Because of changes made to the Census and ACS questions between 1990 and 2016, disability variables should not be compared from year to year. For example: 1) With the 1990 data the disabilities are listed as a "work disability" while this distinction is not made with 2000 or 2016 ACS data; 2) The 2016 ACS data includes the institutionalized population (e.g. persons in prisons and group homes), while this population is not included in 1990 or 2000; 3) the age groupings changed over the years.

Please take the following two concerns into account when viewing this data: 1) With the 1990 data the disabilities are listed as a "work disability" while this distinction is not made with 2000 or 2016 ACS data; 2) The 2016 ACS data includes the institutionalized population (e.g. persons in prisons and group homes), while this population is not included in 1990 or 2000.

The category Bachelor's Degree or Higher under the heading Educational Attainment Trends is a subset of the category High School Graduate or Higher.

Income of households. This includes the income of the householder and all other individuals 15 years old and over in the household, whether they are related to the householder or not. Because many households consist of only one person, average household income is usually less than average family income.

Income of families. In compiling statistics on family income, the incomes of all members 15 years old and over related to the householder are summed and treated as a single amount.

Age Trends median age for 1990 is not available.

Land Use Data

The Land Use information Indicates acreages and percentages for the generalized land use types used to group parcel-specific, existing land use assigned by the county property appraiser office according to the Florida Department of Revenue land use codes.

Community Facilities Data

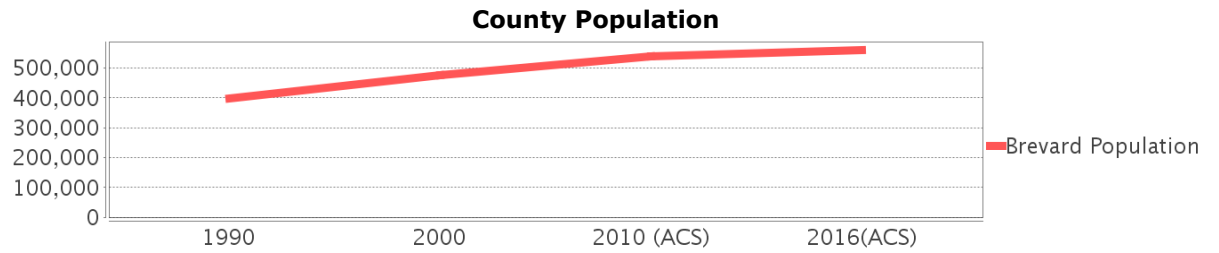
- Assisted Rental Housing Units - Identifies multifamily rental developments that receive funding assistance under federal, state, and local government programs to offer affordable housing as reported by the Shimberg Center for Housing Studies, University of Florida.
- Mobile Home Parks - Identifies approved or acknowledged mobile home parks reported by the Florida Department of Business and Professional Regulation and Florida Department of Health.

- Migrant Camps - Identifies migrant labor camp facilities inspected by the Florida Department of Health.
- Group Care Facilities - Identifies group care facilities inspected by the Florida Department of Health.
- Community Center and Fraternal Association Facilities - Identifies facilities reported by multiple sources.
- Law Enforcement Correctional Facilities - Identifies facilities reported by multiple sources.
- Cultural Centers - Identifies cultural centers including organizations, buildings, or complexes that promote culture and arts (e.g., aquariums and zoological facilities; arboreta and botanical gardens; dinner theaters; drive-ins; historical places and services; libraries; motion picture theaters; museums and art galleries; performing arts centers; performing arts theaters; planetariums; studios and art galleries; and theater producers stage facilities) reported by multiple sources.
- Fire Department and Rescue Station Facilities - Identifies facilities reported by multiple sources.
- Government Buildings - Identifies local, state, and federal government buildings reported by multiple sources.
- Health Care Facilities - Identifies health care facilities including abortion clinics, dialysis clinics, medical doctors, nursing homes, osteopaths, state laboratories/clinics, and surgicenters/walk-in clinics reported by the Florida Department of Health.
- Hospital Facilities - Identifies hospital facilities reported by multiple sources.
- Law Enforcement Facilities - Identifies law enforcement facilities reported by multiple sources.
- Parks and Recreational Facilities - Identifies parks and recreational facilities reported by multiple sources.
- Religious Center Facilities - Identifies religious centers including churches, temples, synagogues, mosques, chapels, centers, and other types of religious facilities reported by multiple sources.
- Private and Public Schools - Identifies private and public schools reported by multiple sources.
- Social Service Centers - Identifies social service centers reported by multiple sources.
- Veteran Organizations and Facilities

Brevard County Demographic Profile

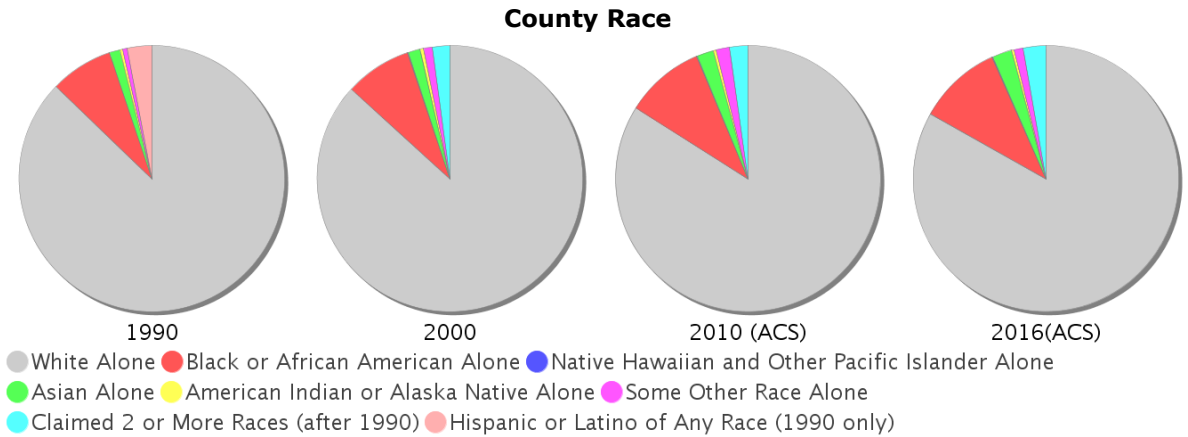
General Population Trends - Brevard

Description	1990	2000	2010 (ACS)	2016(ACS)
Total Population	398,978	476,230	540,583	560,683
Total Households	161,365	198,195	220,871	224,373
Average Persons per Acre	0.574	0.705	0.80	0.83
Average Persons per Household	2.473	2.352	2.00	2.47
Average Persons per Family	2.93	2.904	3.025	3.158
Males	197,163	232,983	264,955	273,945
Females	201,815	243,247	275,628	286,738



Race and Ethnicity Trends - Brevard

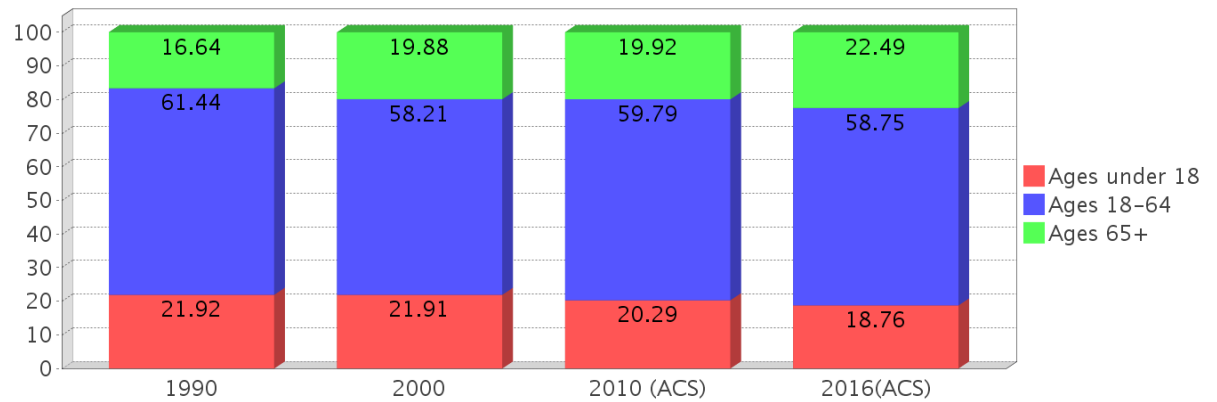
Description	1990	2000	2010 (ACS)	2016(ACS)
White Alone	358,391 (89.83%)	413,023 (86.73%)	453,634 (83.92%)	466,147 (83.14%)
Black or African American Alone	31,417 (7.87%)	38,680 (8.12%)	52,758 (9.76%)	57,306 (10.22%)
Native Hawaiian and Other Pacific Islander Alone	(NA)	278 (0.06%)	319 (0.06%)	486 (0.09%)
Asian Alone	5,187 (1.30%)	7,122 (1.50%)	11,035 (2.04%)	13,274 (2.37%)
American Indian or Alaska Native Alone	1,369 (0.34%)	2,070 (0.43%)	1,947 (0.36%)	1,652 (0.29%)
Some Other Race Alone	2,422 (0.61%)	4,964 (1.04%)	8,928 (1.65%)	6,424 (1.15%)
Claimed 2 or More Races	(NA)	10,093 (2.12%)	11,962 (2.21%)	15,394 (2.75%)
Hispanic or Latino of Any Race	12,261 (3.07%)	21,902 (4.60%)	40,925 (7.57%)	52,153 (9.30%)
Not Hispanic or Latino	386,717 (96.93%)	454,328 (95.40%)	499,658 (92.43%)	508,530 (90.70%)
Minority	121,910 (30.56%)	77,898 (16.36%)	121,910 (22.55%)	135,692 (24.20%)



Age Trends - Brevard

Description	1990	2000	2010 (ACS)	2016(ACS)
Under Age 5	6.61%	5.18%	4.99%	4.75%
Ages 5-17	15.31%	16.73%	15.30%	14.01%
Ages 18-21	4.92%	4.23%	4.73%	4.39%
Ages 22-29	12.48%	7.29%	8.25%	8.82%
Ages 30-39	16.19%	13.96%	10.50%	10.28%
Ages 40-49	11.81%	15.55%	15.25%	11.80%
Ages 50-64	16.04%	17.19%	21.07%	23.46%
Age 65 and Over	16.64%	19.88%	19.92%	22.49%
-Ages 65-74	10.82%	10.94%	10.41%	12.03%
-Ages 75-84	4.73%	7.04%	7.17%	7.51%
-Age 85 and Over	1.09%	1.90%	2.34%	2.95%
Median Age	NA	41	45	47

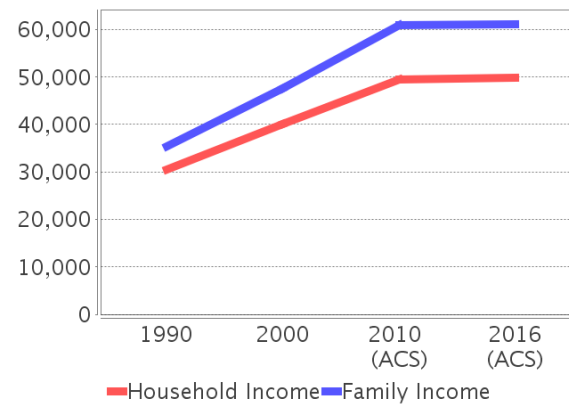
Percentage Population by Age Group



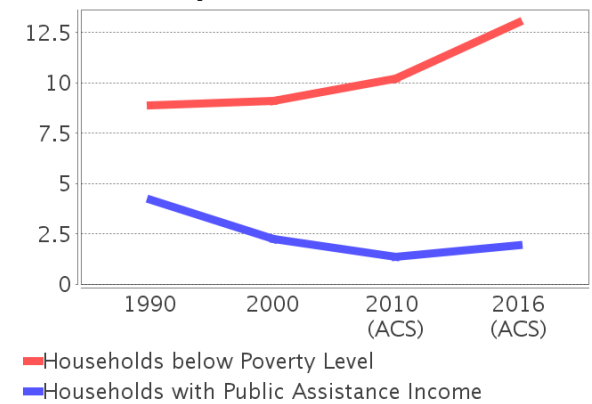
Income Trends - Brevard

Description	1990	2000	2010 (ACS)	2016(ACS)
Median Household Income	\$30,534	\$40,099	\$49,523	\$49,914
Median Family Income	\$35,402	\$47,571	\$60,842	\$61,141
Population below Poverty Level	9.13%	9.47%	10.52%	13.96%
Households below Poverty Level	8.89%	9.11%	10.20%	13.00%
Households with Public Assistance Income	4.18%	2.26%	1.38%	1.94%

Income Trends



Poverty and Public Assistance



Disability Trends - Brevard

See the Data Sources section below for an explanation about the differences in disability data among the various years.

Description	1990	2000	2010 (ACS)	2016(ACS)
Population 16 To 64 Years with a disability	21,900 (6.99%)	56,763 (12.82%)	NA (NA)	NA (NA)
Population 20 To 64 Years with a disability	NA (NA)	NA (NA)	NA (NA)	36,510 (11.58%)

Educational Attainment Trends - Brevard

Age 25 and Over

Description	1990	2000	2010 (ACS)	2016(ACS)
Less than 9th Grade	14,336	11,314	9,471	10,629
9th to 12th Grade, No Diploma	34,651	35,102	27,078	25,735
High School Graduate or Higher	228,359	293,322	352,024	375,753
Bachelor's Degree or Higher	56,574	80,020	101,847	114,274

Language Trends - Brevard

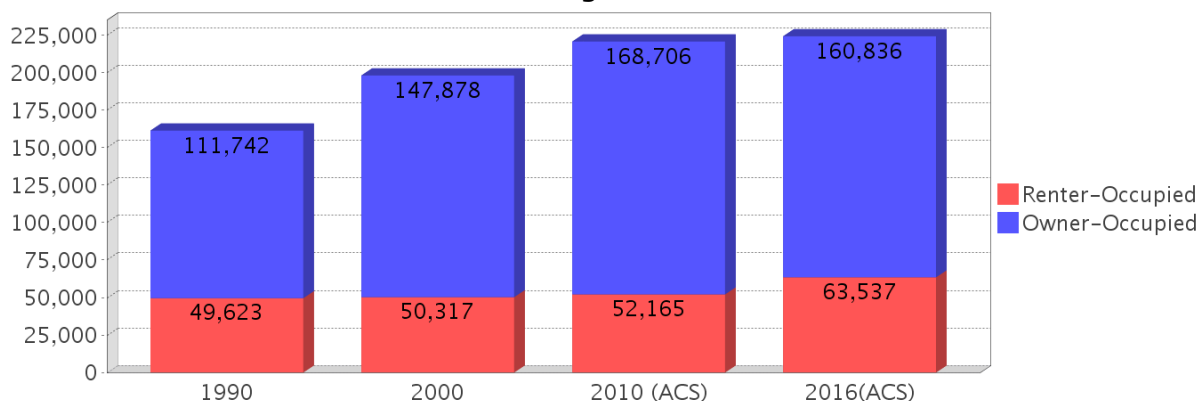
Age 5 and Over

Description	1990	2000	2010 (ACS)	2016(ACS)
Speaks English Well	5,377	7,463	9,800	10,183
Speaks English Not Well	NA	3,748	4,813	6,403
Speaks English Not at All	NA	658	1,126	1,660
Speaks English Not Well or Not at All	3,139	4,406	5,939	8,063

Housing Trends - Brevard

Description	1990	2000	2010 (ACS)	2016(ACS)
Total	185,150	222,072	267,036	272,437
Units per Acre	0.266	0.329	0.395	0.403
Single-Family Units	107,123	146,810	182,849	188,514
Multi-Family Units	36,002	49,971	60,169	62,281
Mobile Home Units	17,130	24,092	23,310	21,105
Owner-Occupied Units	111,742	147,878	168,706	160,836
Renter-Occupied Units	49,623	50,317	52,165	63,537
Vacant Units	23,785	23,877	46,165	48,064
Median Housing Value	\$74,600	\$87,600	\$186,900	\$150,500
Occupied Housing Units w/No Vehicle	8,788 (5.45%)	10,579 (5.34%)	9,967 (4.51%)	12,831 (5.72%)

Housing Tenure



County Data Sources

Demographic data reported is from the U.S. Decennial Census (1990, 2000) and the American Community Survey (ACS) 5-year estimates from 2006-2010 and 2012-2016. The data was gathered at the county level. Depending on the dataset, the data represents 100% counts (Census Summary File 1) or sample-based information (Census Summary File 3 or ACS).

About the Census Data:

Use caution when comparing the 100% count data (Decennial Census) to the sample-based data (ACS). In any given year, about one in 40 or 2.5% of U.S. households will receive the ACS questionnaire. Over any five-year period, about one in eight households will receive the questionnaire, as compared to about one in six that received the long form questionnaire for the Decennial Census 2000. (Source: <http://mcdc.missouri.edu/pub/data/acs/Readme.shtml>) The U.S. Census Bureau provides help with this process:

<https://www.census.gov/programs-surveys/acs/guidance/comparing-acs-data/2016.html>

Use caution when interpreting changes in Race and Ethnicity over time. Starting with the 2000 Decennial Census, respondents were given a new option of selecting one or more race categories. Also in 2000, the placement of the question about Hispanic origin changed, helping to increase responsiveness to the Hispanic-origin question. Because of these and other changes, the 1990 data on race and ethnicity are not directly comparable with data from later censuses. (Source: <http://www.census.gov/prod/2001pubs/c2kbr01-1.pdf>;
<http://www.census.gov/pred/www/rpts/Race%20and%20Ethnicity%20FINAL%20report.pdf>)

The "Minority" calculations are derived from Census and ACS data using both the race and ethnicity responses. On this report, "Minority" refers to individuals who list a race other than White and/or list their ethnicity as Hispanic/Latino. In other words, people who are multi-racial, any single race other than White, or Hispanic/Latino of any race are considered minorities.

Disability data is not included in the 2010 Decennial Census, or the 2006-2010 ACS. This data is available in the 2012-2016 ACS.

Because of changes made to the Census and ACS questions between 1990 and 2016, disability variables should not be compared from year to year. For example: 1) With the 1990 data the disabilities are listed as a "work disability" while this distinction is not made with 2000 or 2016 ACS data; 2) The 2016 ACS data includes the institutionalized population (e.g. persons in prisons and group homes), while this population is not included in 1990 or 2000; 3) the age groupings changed over the years.

Please take the following two concerns into account when viewing this data: 1) With the 1990 data the disabilities are listed as a "work disability" while this distinction is not made with 2000 or 2016 ACS data; 2) The 2016 ACS data includes the institutionalized population (e.g. persons in prisons and group homes), while this population is not included in 1990 or 2000.

source:

<https://www.census.gov/people/disability/methodology/acs.html>

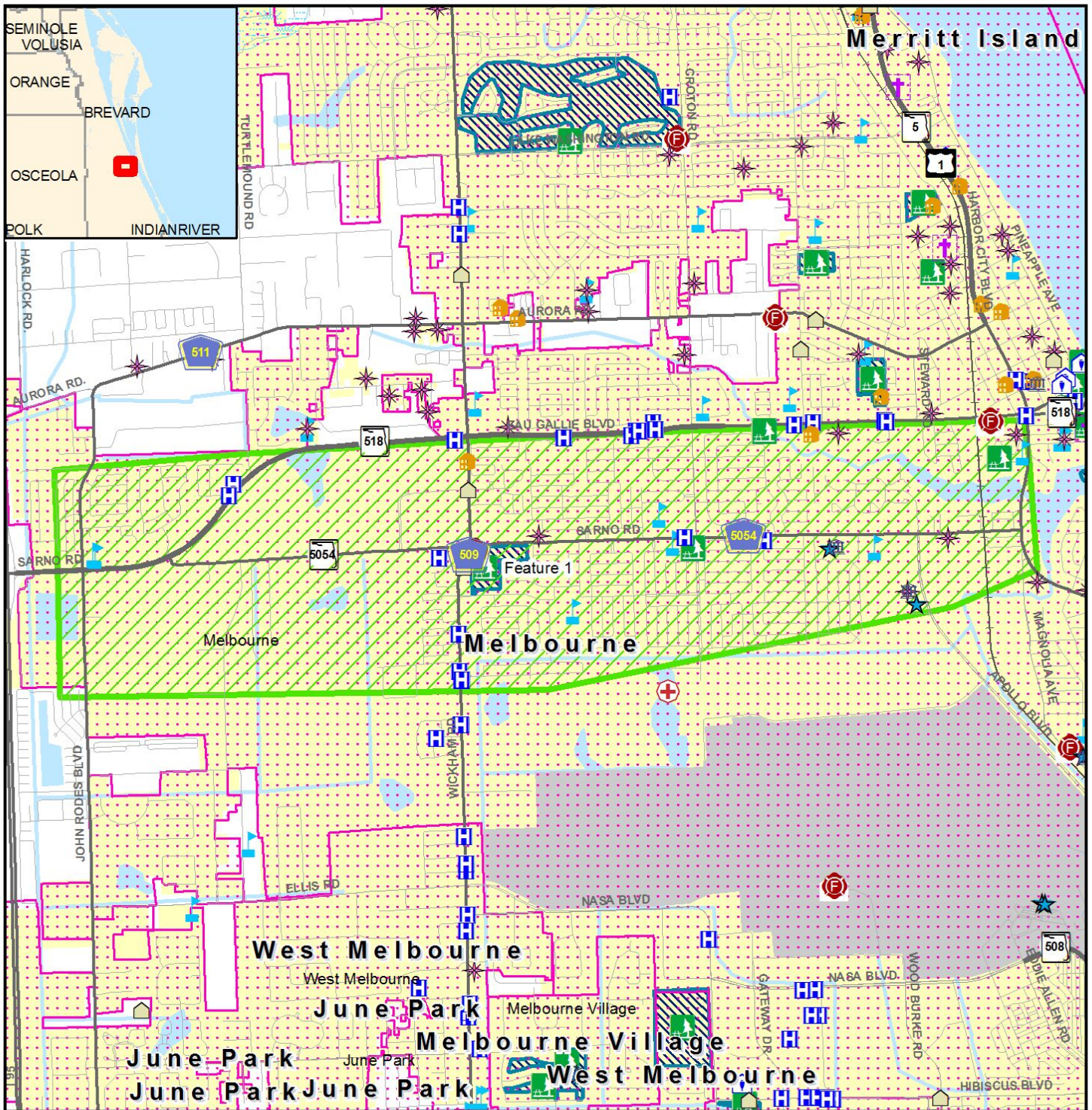
<https://www.census.gov/population/www/cen2000/90vs00/index.html>

The category Bachelor's Degree or Higher under the heading Educational Attainment Trends is a subset of the category High School Graduate or Higher.

Metadata

- Community and Fraternal Centers https://etdmpub.florida-etad.org/metadata/gc_communitycenter.htm
- Correctional Facilities in Florida https://etdmpub.florida-etad.org/metadata/gc_correctional.htm
- Cultural Centers in Florida https://etdmpub.florida-etad.org/metadata/gc_culturecenter.htm
- Fire Department and Rescue Station Facilities in Florida https://etdmpub.florida-etad.org/metadata/gc_firestat.htm
- Local, State, and Federal Government Buildings in Florida https://etdmpub.florida-etad.org/metadata/gc_govbuild.htm
- Florida Health Care Facilities https://etdmpub.florida-etad.org/metadata/gc_health.htm
- Hospital Facilities in Florida https://etdmpub.florida-etad.org/metadata/gc_hospitals.htm
- Law Enforcement Facilities in Florida https://etdmpub.florida-etad.org/metadata/gc_lawenforce.htm
- Florida Parks and Recreational Facilities https://etdmpub.florida-etad.org/metadata/gc_parks.htm
- Religious Centers https://etdmpub.florida-etad.org/metadata/gc_religion.htm
- Florida Public and Private Schools https://etdmpub.florida-etad.org/metadata/gc_schools.htm
- Social Service Centers https://etdmpub.florida-etad.org/metadata/gc_socialservice.htm
- Assisted Rental Housing Units in Florida https://etdmpub.florida-etad.org/metadata/gc_assisted_housing.htm
- Group Care Facilities <https://etdmpub.florida-etad.org/metadata/groupcare.htm>
- Mobile Home Parks in Florida https://etdmpub.florida-etad.org/metadata/gc_mobilehomes.htm
- Migrant Camps in Florida <https://etdmpub.florida-etad.org/metadata/migrant.htm>
- Veteran Organizations and Facilities https://etdmpub.florida-etad.org/metadata/gc_veterans.htm
- Generalized Land Use - Florida DOT District 5 https://etdmpub.florida-etad.org/metadata/d5_lu_gen.htm
- Census Block Groups in Florida https://etdmpub.florida-etad.org/metadata/e2_cenacs_cci.htm
- 1990 Census Block Groups in Florida https://etdmpub.florida-etad.org/metadata/e2_cenblkgrp_1990_cci.htm
- 2000 Census Block Groups in Florida https://etdmpub.florida-etad.org/metadata/e2_cenblkgrp_2000_cci.htm
- 2010 Census Block Groups in Florida https://etdmpub.florida-etad.org/metadata/e2_cenblkgrp_2010_cci.htm

AOI - Sarno Road Corridor



Community Services Map

Area of Interest	Government	Law Enforcement	Health Care	Recreational Trail
Major Road	Civic Center	Place of Worship	School	Community Boundary
Local Road or Trail	Cemetery	Cultural Center	Park	Conservation or Recreation Area
City Limits	Social Service	Fire Station		
	Community Center			

Data Sources: US Geological Survey; FL Department of Transportation; NAVTEQ; FL Property Appraisers; FL Natural Areas Inventory

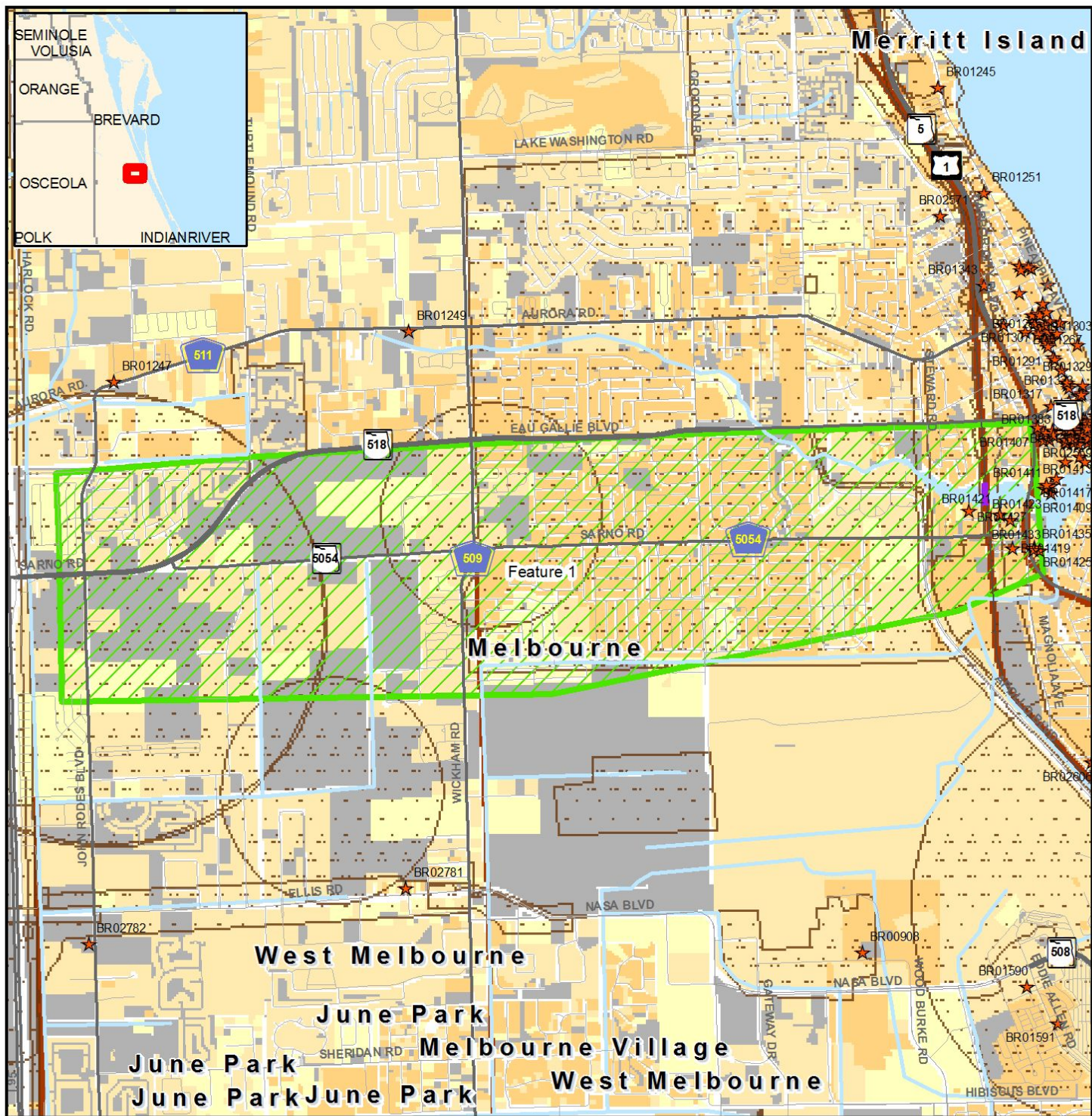
0 0.2 0.4 0.8 Miles

6/1/2018

Environmental Screening Tool

This map and its content is made available by the Florida Department of Transportation on an "as is," "as available" basis without warranties of any kind, express or implied.

AOI - Sarno Road Corridor

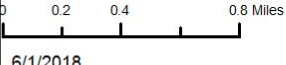


Historic Resource Map

- █ Area of Interest
- Major Road
- Local Road or Trail
- █ Year Built
- █ Pre 1970
- █ Post 1980
- █ 1970 - 1979
- █ Parcels w/ no values
- ★ Historic Structure
- Historic Bridge
- State Historic Highway
- Historic Cemetery
- Historic Resource Group
- Cultural Resource Field Survey Area

Data Sources:
 NAVTEQ
 US Geological Survey
 Florida Department of Transportation
 Florida Department of State,
 Bureau of Archaeological Research

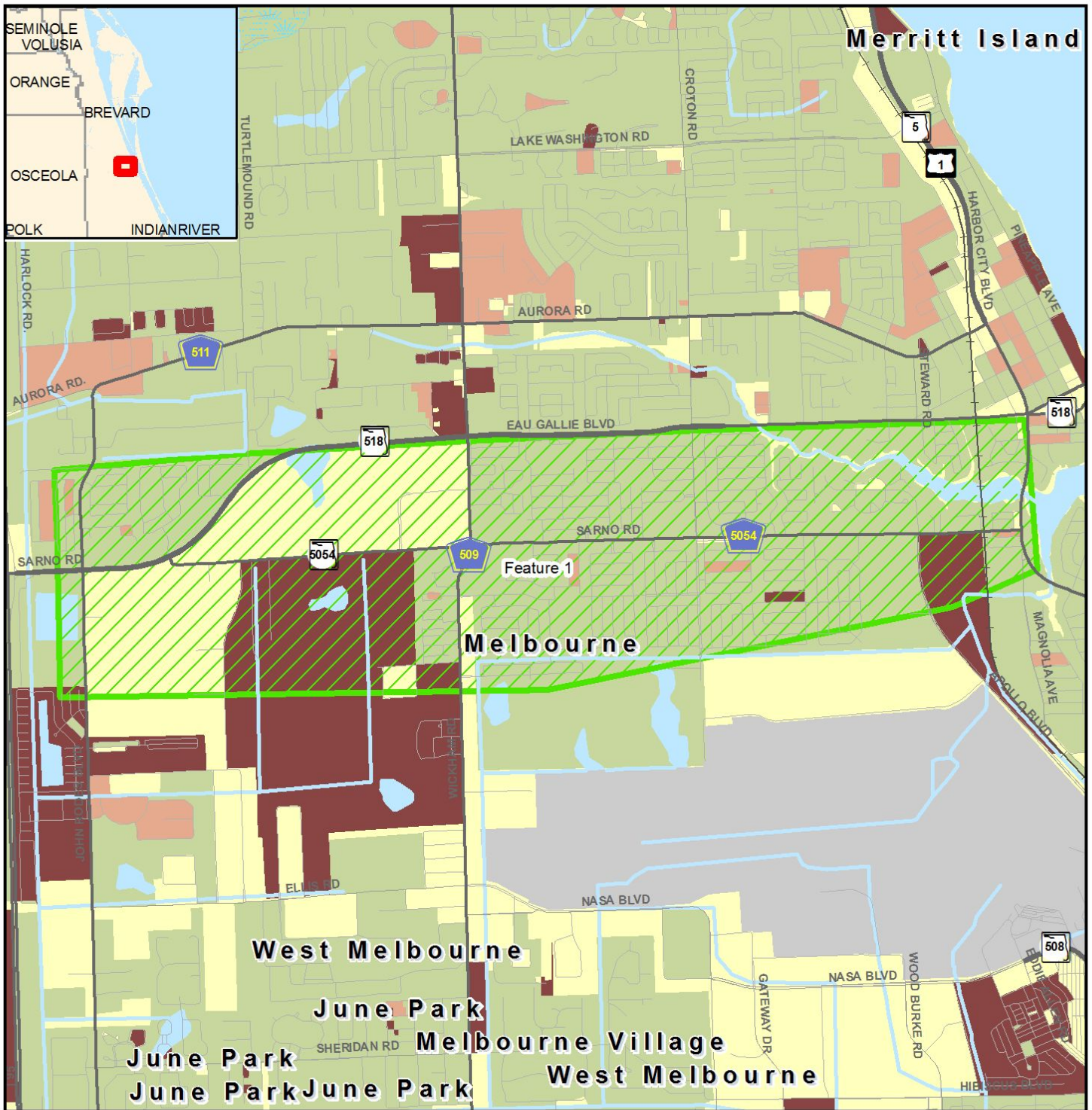
Note: Historic properties depicted on this map represent resources listed in the Florida Master Site File excluding archeological site locations, which, pursuant to Chapter 267.135, Florida Statutes, may be exempt from public record (Chapter 119.07, Florida Statutes). Absence of features on the map does not necessarily indicate an absence of resources in the project vicinity.



6/1/2018



AOI - Sarno Road Corridor



Age Distribution Map

Area of Interest

Major Road

Local Road or Trail

Median Age
 0 - 18
 18 - 30
 30 - 65
 > 65

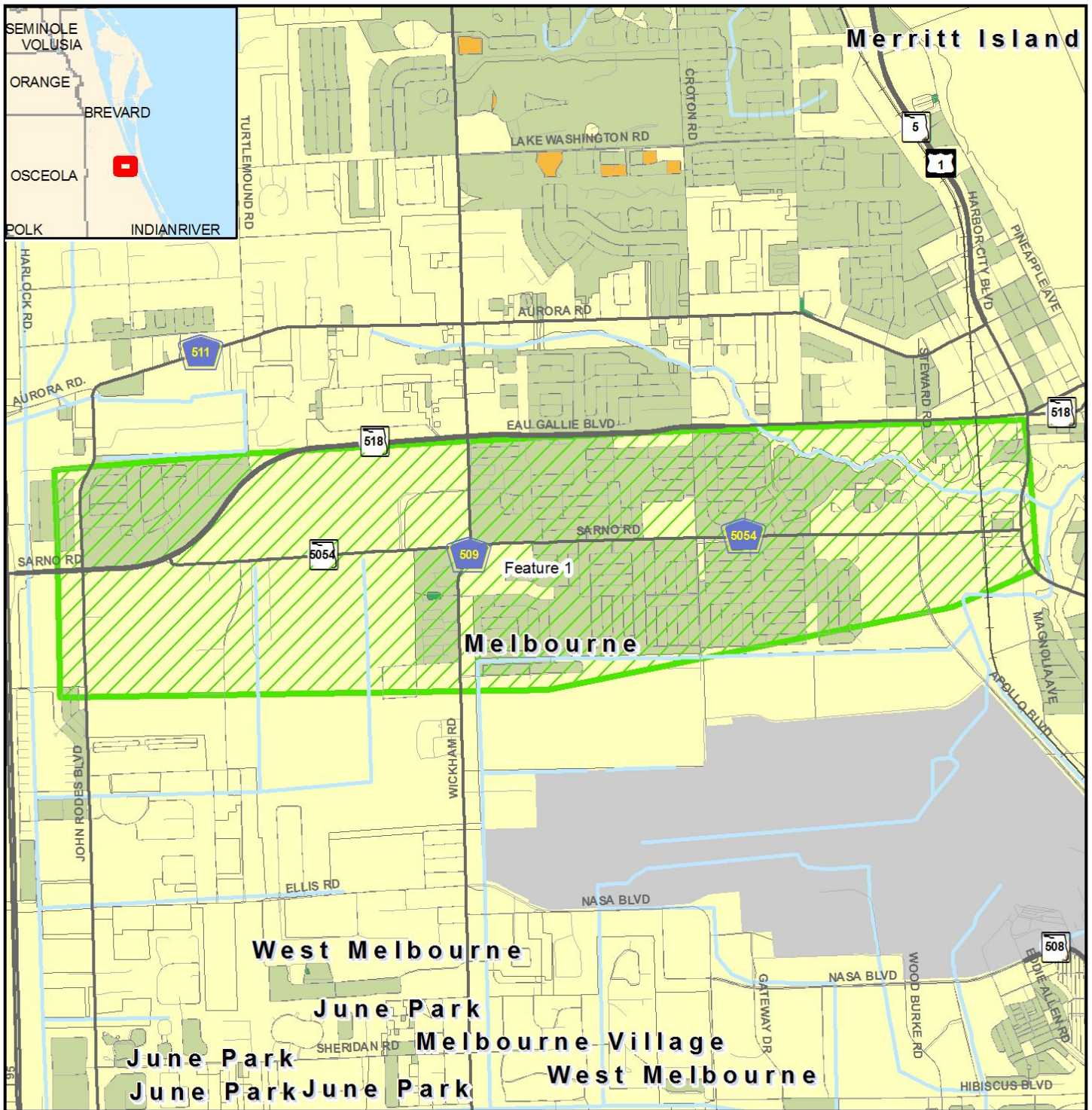
Data Sources:
 US Geological Survey
 FL Department of Transportation
 NAVTEQ
 US Census Bureau (2010)

0 0.15 0.3 0.6 Miles

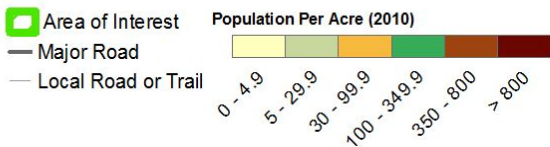
6/1/2018

This map and its content is made available by the Florida Department of Transportation on an "as is," "as available" basis without warranties of any kind, express or implied.

AOI - Sarno Road Corridor



Population Density Map



Data Sources:
 US Geological Survey
 FL Department of Transportation
 NAVTEQ
 US Census Bureau (2010)

0 0.1 0.2 0.4 Miles

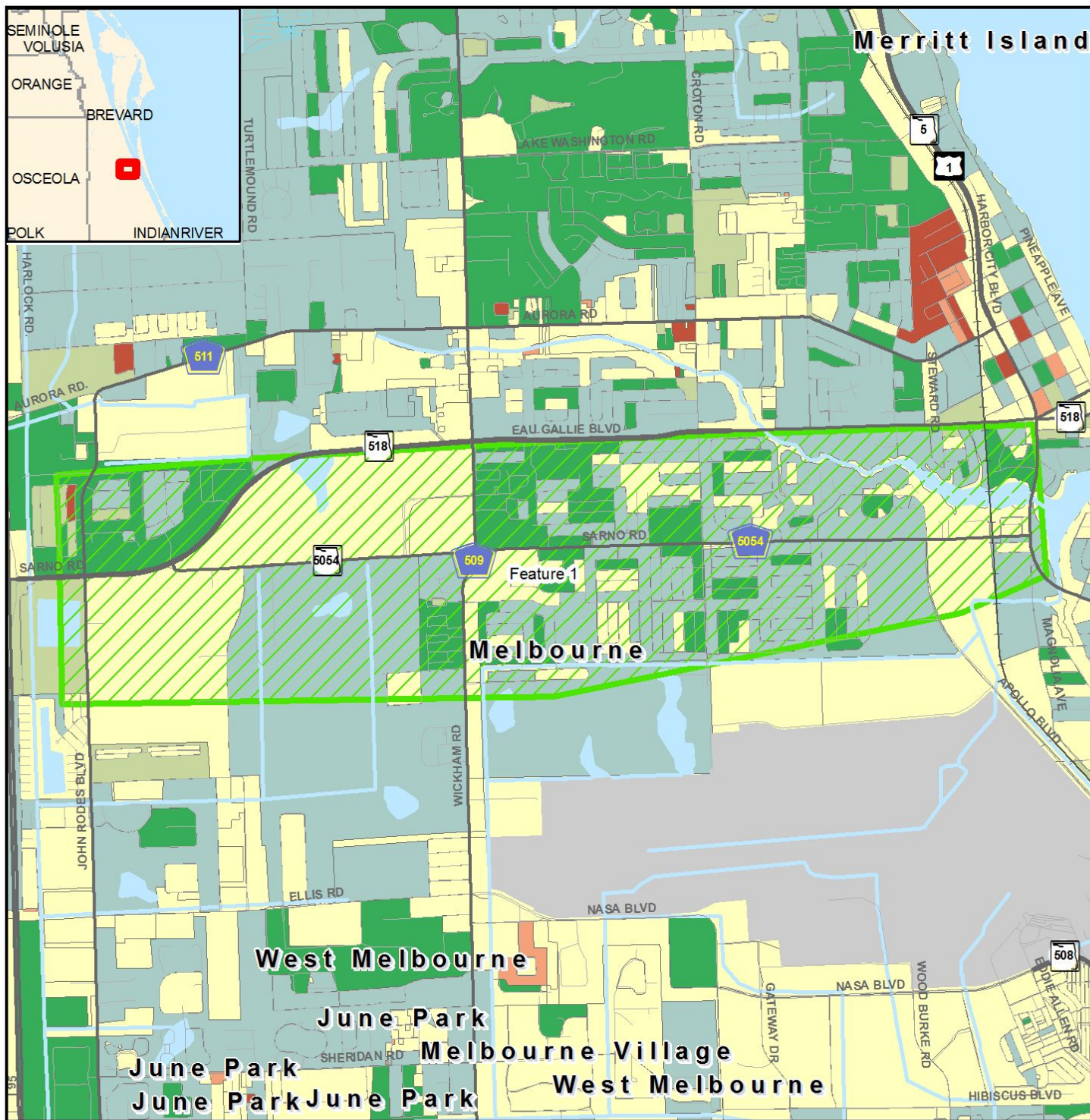


etdm
 Environmental Screening Tool

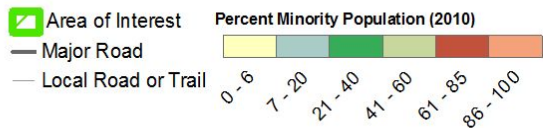


6/1/2018

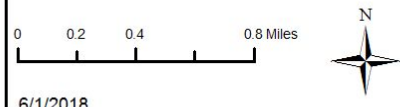
AOI - Sarno Road Corridor



Minority Population Map

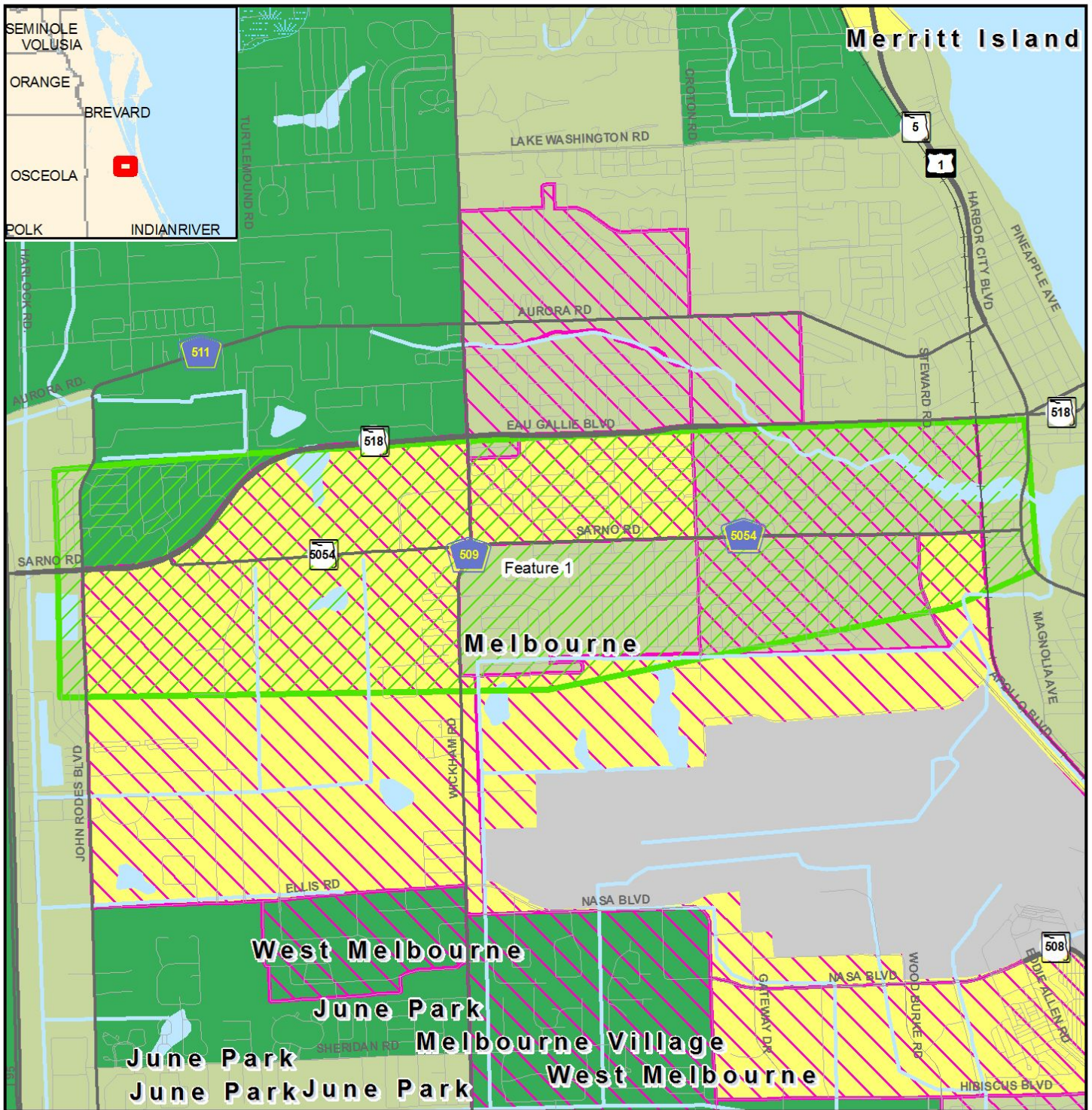


Data Sources:
 US Geological Survey
 FL Department of Transportation
 NAVTEQ
 US Census Bureau (2010)



6/1/2018

AOI - Sarno Road Corridor



Income Map

- Area of Interest
- Major Road
- Local Road or Trail
- > 20% Below Poverty

Median Household Income

- 0 - 10,000
- 10,001 - 29,999
- 30,000 - 49,999
- 50,000 - 79,999
- 80,000 - 125,000
- > 125,000

Data Sources:
 US Geological Survey
 FL Department of Transportation
 NAVTEQ
 US Census Bureau (2010)

0 0.2 0.4 0.8 Miles

6/1/2018

etdm
Environmental Screening Tool

FDOT

This map and its content is made available by the Florida Department of Transportation on an "as is," "as available" basis without warranties of any kind, express or implied.