

# WHO WE ARE

The Space Coast Transportation Planning Organization (SCTPO) continually monitors the conditions of Brevard's transportation system's modes and carries out planning at the regional level.



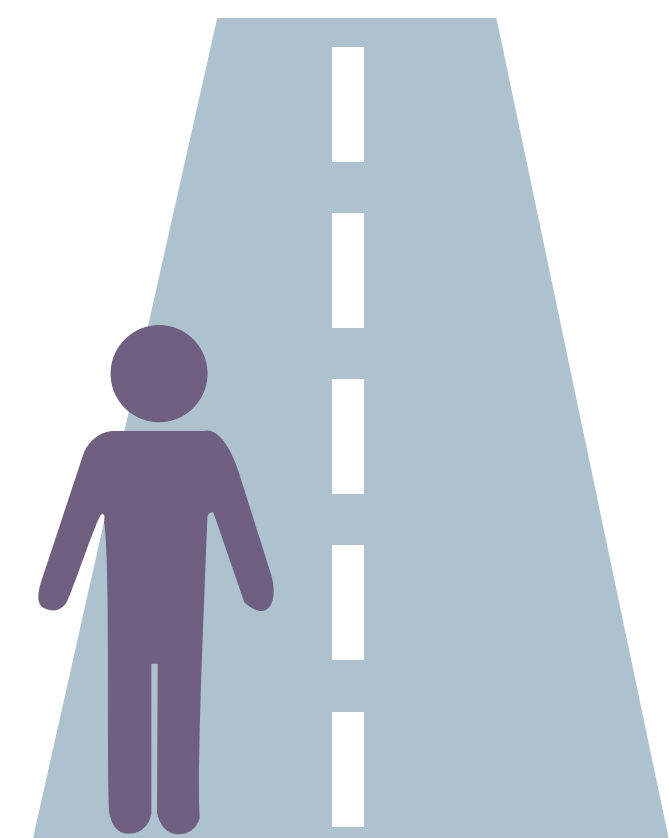
The SCTPO is governed by federal and state law. Any urbanized area with a population of more than 50,000 citizens **must** have a TPO to spend federal transportation funds.



A board made up of local elected officials sets policy for the SCTPO and adopts long-range plans and short-range programs of future transportation improvements.

## What is Transportation Planning?

Transportation planning is about identifying opportunities to improve mobility for the people and businesses who use transportation systems; it is about providing accessibility for everyone in your community.

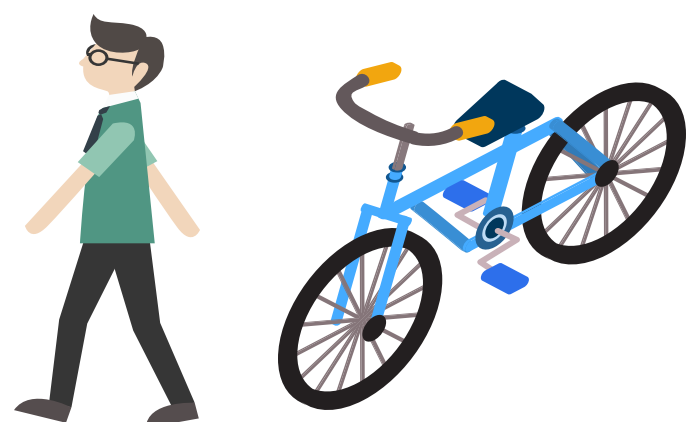


## What is a Transportation System?

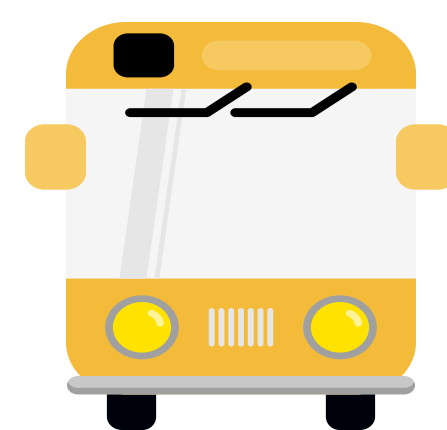
A transportation system is made up of different modes of transportation that use the system to move people and goods from one place to another. Brevard County has more transportation resources than any area its size.



Car



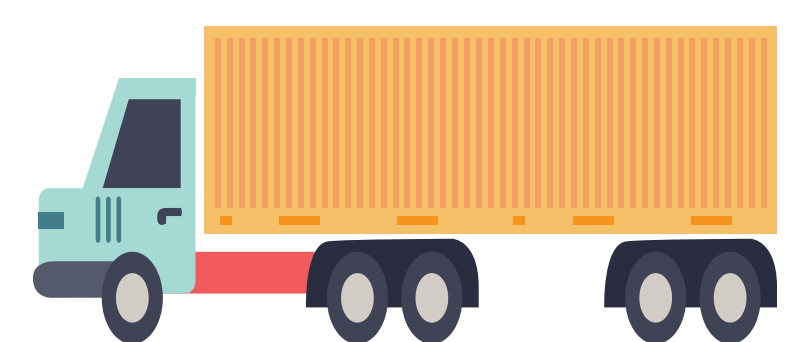
Walk/Bicycle



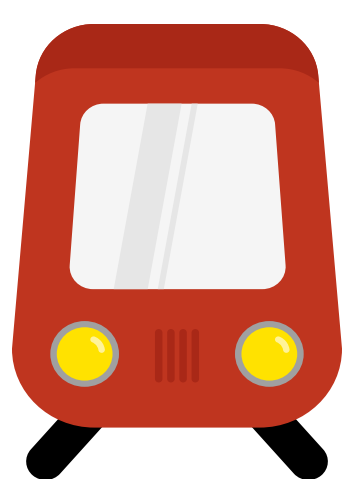
Transit



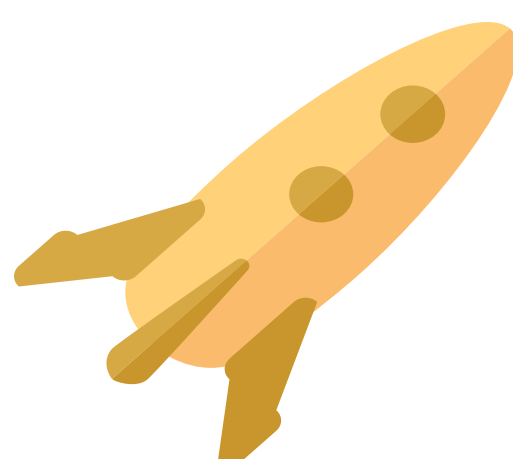
Air



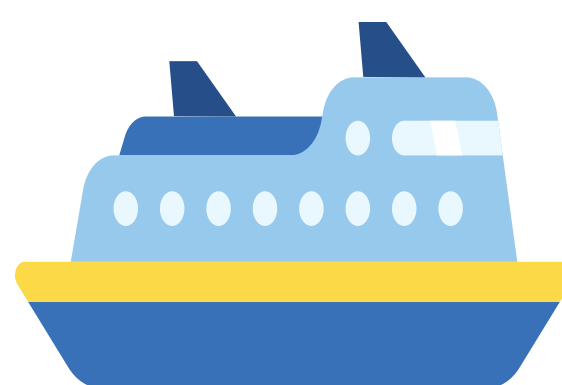
Freight



Rail



Space



Sea



### Economy 101

Brevard's economy is largely built on and around these transportation assets.

## WHAT WE DO

A TPO is created to look at the big picture of transportation planning – helping to assist in the communication and coordination among the different modes and municipalities.

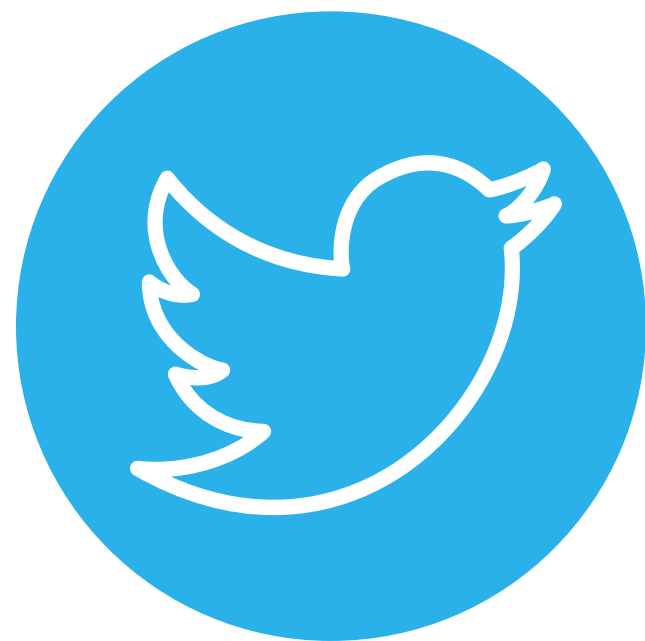


## STAY CONNECTED

Stay up to date on the latest transportation planning news, projects, and initiatives by following us on our social media outlets or by visiting our website. Connect with us today!



@SCTPO



@SpaceCoastTPO



Space Coast TPO



[www.sctpo.com](http://www.sctpo.com)

For questions regarding our civil rights adherence policies, please contact Abby Hemenway, Title VI Coordinator, at [abby.hemenway@brevardfl.gov](mailto:abby.hemenway@brevardfl.gov) or call 321-690-6890.

## CONTACT US

Have a question or concern? Feel free to contact us via email, phone, or visit our office. To learn more about the SCTPO visit [www.spacecoasttpo.com](http://www.spacecoasttpo.com).



2725  
Judge Fran Jamieson Way  
Building B  
Melbourne FL 32940



[tpostaff@sctpo.com](mailto:tpostaff@sctpo.com)



(321) 690-6890



Office Hours:  
Open Monday – Friday  
8:00 a.m. - 4:30 p.m.  
Closed on public holidays.