

# Brevard County: Your Home Station

Wednesday, January 18, 2023





**Welcome**



# Georganna Gillette

# Who are we? Why Brevard?



# Introductions – Who are you?



- Name
- Organization
  - Role/Title within organization
- Fun Transportation Question

If you were a mode of transportation...  
**What would you be and why?**





# Safety Message Brightline

A photograph of a Brightline train on an elevated track in a city. The train is white with green and yellow accents. The background features modern high-rise buildings under a blue sky with some clouds. The Brightline logo is overlaid on the image.

*brightline*<sup>®</sup>

**RICC - Brightline Safety Update**

**Katie Mitzner**

**January 18, 2023**

# Brightline's Orlando Extension



**\$4.5B**  
construction cost  
of Florida system  
(Phases 1 and 2)

**88%**  
complete

**6.6 M**  
construction-hours worked to date

**900+**  
workers on the job





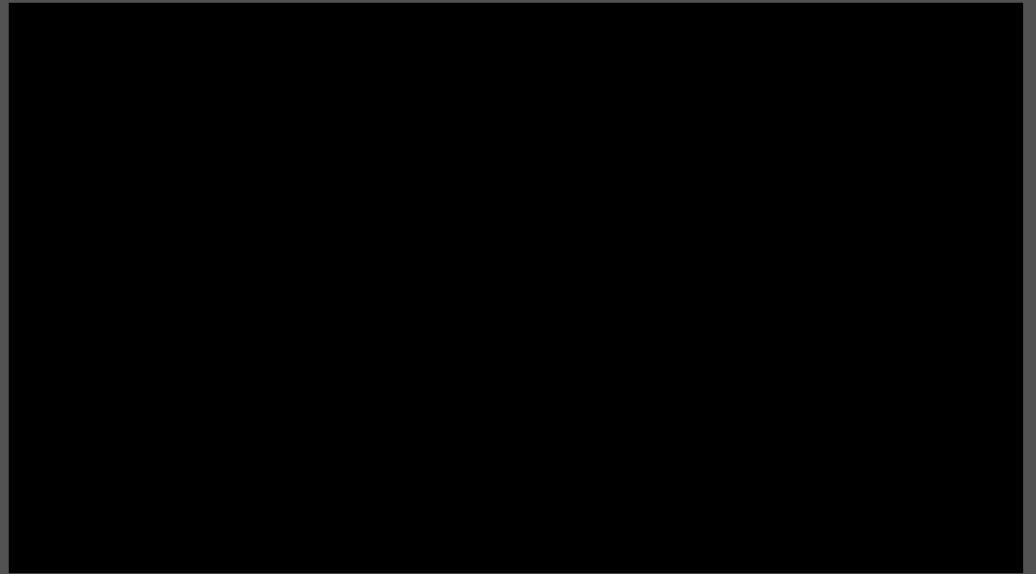
# Brightline Orlando Station

- **Completion expected January 2023**
- Orlando Int'l Airport's Train Station adjacent to Terminal C
- 37,350 ft<sup>2</sup> of tenant improvements
- **Rendering Reveal of Brightline Orlando**

**brightline**



**FIRST LOOK**  
**Brightline**  
**Orlando**  
**Station**



# Space Coast Update

- **50 railroad crossings**  
New profiles, gates, signals, sidewalks  
quad gates, medians, drainage
  - Lake Washington Rd. – 1/21-2/10
  - Eau Gallie Blvd. – 2/17-2/27
  - Prospect Ave. – TBD
- **Bridges – 90% complete**  
Double tracking, new structures,  
improved clearances and boat spans



# HIGH SPEED TESTING

## • TIMELINE:

- **Summer 2022 – 79 mph began in southern Brevard County**
- **October 2022 – first 110 mph testing EVER began in Martin/St. Lucie Counties**
- **November 2022 – 79 mph began through northern Brevard County**
- **Early February 2023 – 125 mph in corridor along SR 528 (between Orlando International and Cocoa)**
- **Late February / Early March 2023 – 110 mph through Rockledge and Cocoa**

Orlando Sentinel  
**LOCAL & STATE**

## Blazing into history

Brightline to test at 110 mph, likely Florida's fastest train ever

By Kevin Spear  
Orlando Sentinel

Brightline's unfolding expansion from Miami to Orlando will enter a testing phase this month with trains expected to reach speeds likely never seen in Florida.

Test runs will occur along newly refurbished track in Martin and St. Lucie counties, with Brightline's California-made train sets scheduled to hit 110 mph, which is to be the operational speed when service begins next year.

When asked if that speed will be the fastest ever by a train in Flor-

ida — or whether Henry Flagler's locomotives or Amtrak's passenger services or any other train was ever speedier — Brightline would not address whether it is about to make history.

It's unlikely the company hasn't thought about the record books, having invested \$5 billion to link Miami and Orlando with service faster than driving and less odious than flying.

The Miami-based, privately owned railroad went silent on speed records and pivoted to safety messaging.

"The start of 110-mph testing

is an important milestone for the future of train travel in Florida and across the U.S.," spokesperson Katie Mitzner said.

"If the crossing arms are down, don't drive around them," Mitzner said. "Never stop on the tracks and only cross tracks at a designated railroad crossing. Failure to follow the law could result in fines, points on your license or your life."

Brightline and state and federal railroad officials have sought to stem a relatively high rate of accidents and deaths between



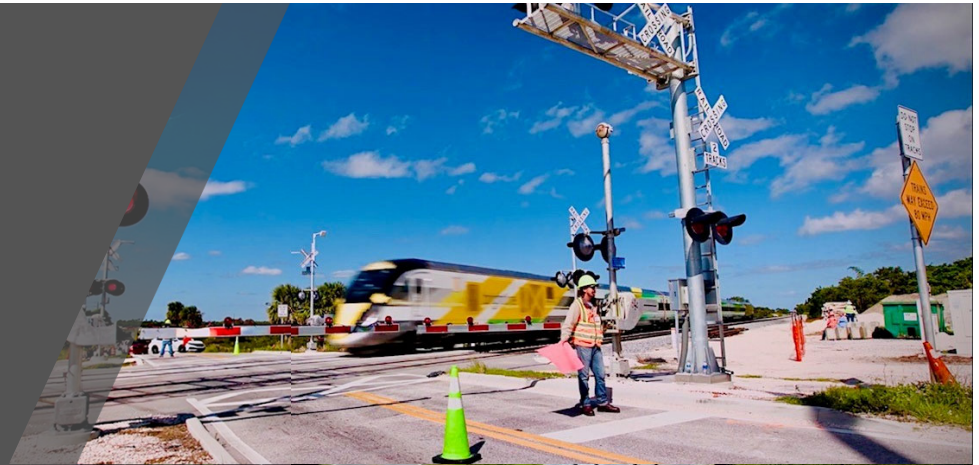
A Brightline train is parked at the train station at Orlando International Airport on Sept. 6. COURTESY





# Safety Enhancements at Grade Crossings

- All crossings upgraded to meet standards set by FRA and FDOT
  - New roadway profiles (double track +)
  - New gate mechanisms
  - Auxiliary flasher lights
  - Enhanced signage, signals, and pavement markings
  - FRA sealed corridors where speeds exceed 79 mph
  - New sidewalks & curbs & pedestrian gates
  - Quiet zone compatible
  - Positive Train Control (PTC)



# RAISE Grant

- FDOT was awarded a \$25 million federal RAISE Grant to enhance safety between Miami-Dade and Brevard counties
- Brightline is a partner; both Brightline and FDOT will each contribute \$10 million
- **Safety mitigations aim to reduce the two primary types of accidents: vehicle collisions and trespasser strikes**
- **The supplemental safety measures to be installed include:**
  - Rail Dynamic Envelopes
  - Delineators, Raised Pavement Markers, and Edge Striping
  - Fencing and/or Landscaping
  - "Do Not Stop on Tracks" and Crisis Support Signage

# Safety Outreach

- **THREE-FOLD**

- Engineering
- Enforcement
- Education

- How you can help:

- Safety Messages
- Social Media
- Flyers
- Text Alert Updates

**TEXT "RR110" to 888-384-0037**

**ALERT: BRIGHTLINE  
TO START TESTING AT 110 MPH**



**Brevard County**

*brightline*

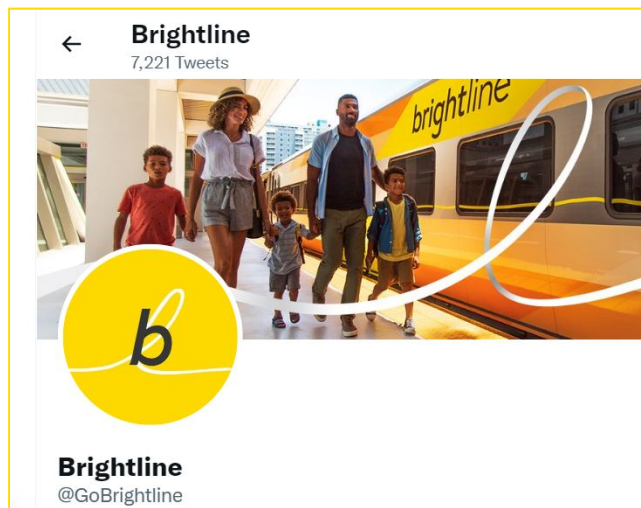


**Safety  
Messages**

**High Speed  
Testing**



## Stay Connected



Sign up for Orlando updates



*brightline*

*brightline*<sup>®</sup>

THANK YOU



[GoBrightline.com](http://GoBrightline.com)

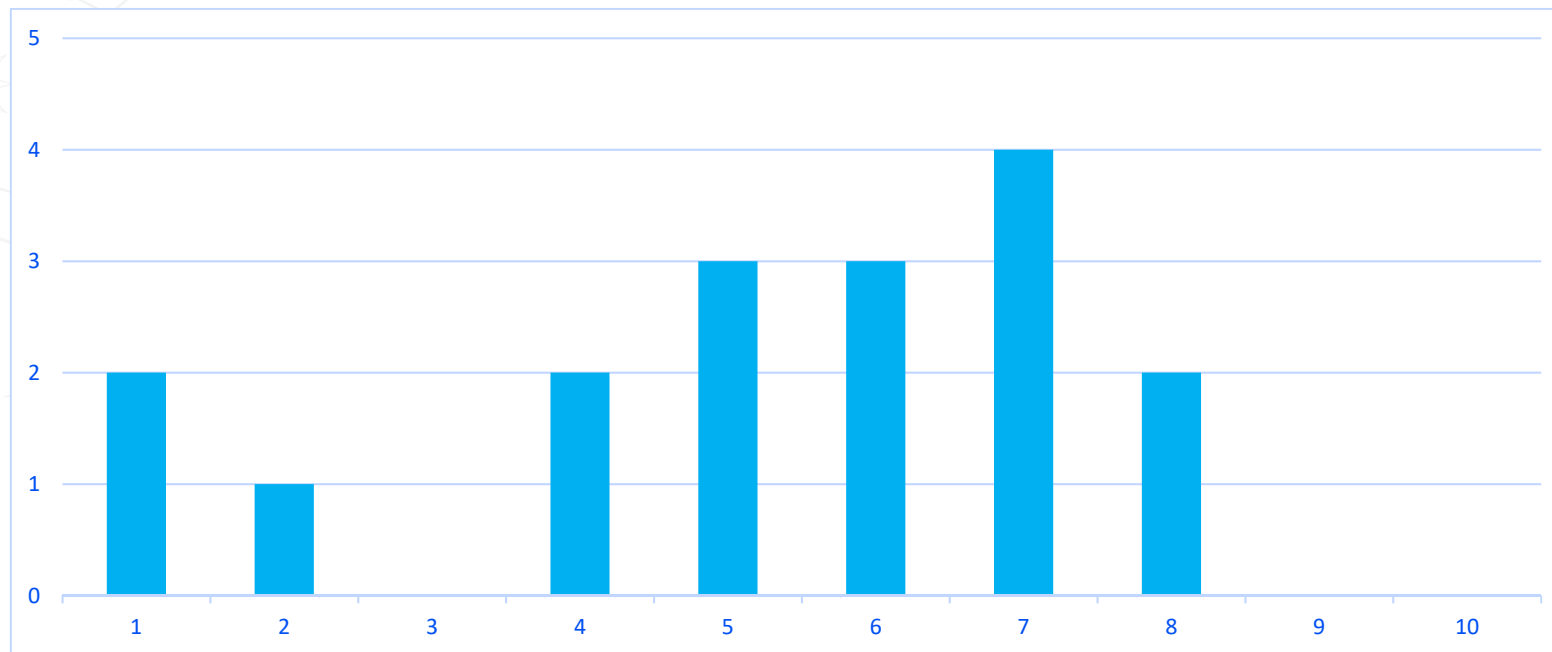
# What is the purpose of the RICC?



# Pre-Meeting Survey Results



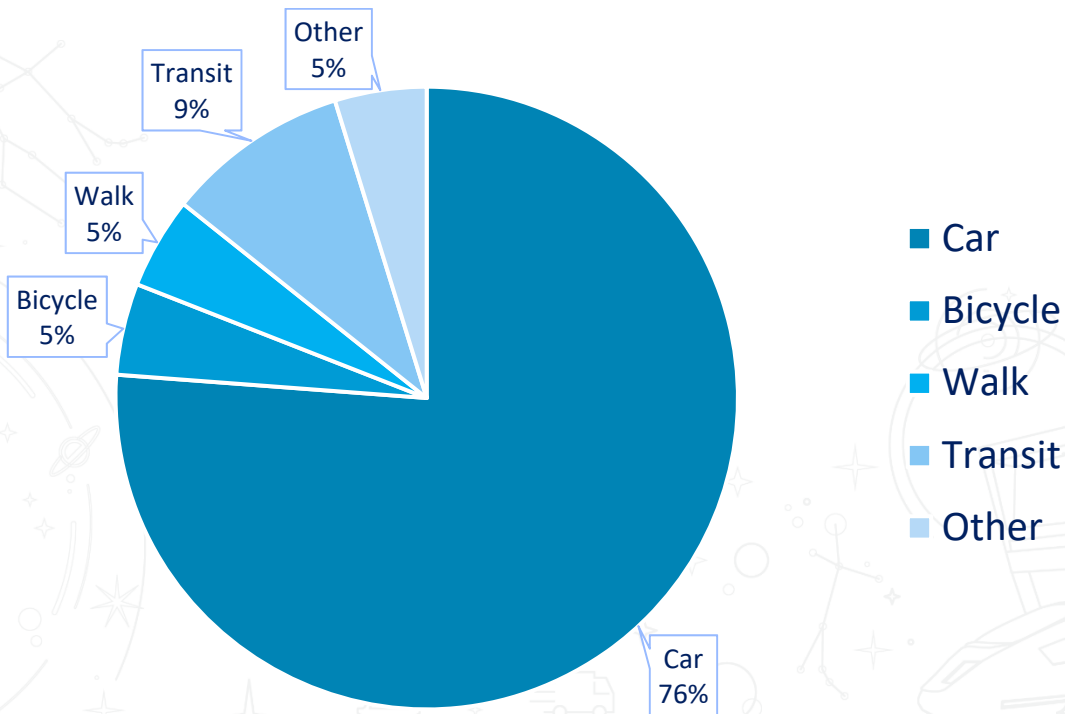
How would you rank the Brevard County transportation system biking, walking, taking the bus, and driving on a scale of 1-10? (1 being terrible, 10 being excellent)



# Pre-Meeting Survey Results



How do people currently travel to your organization?

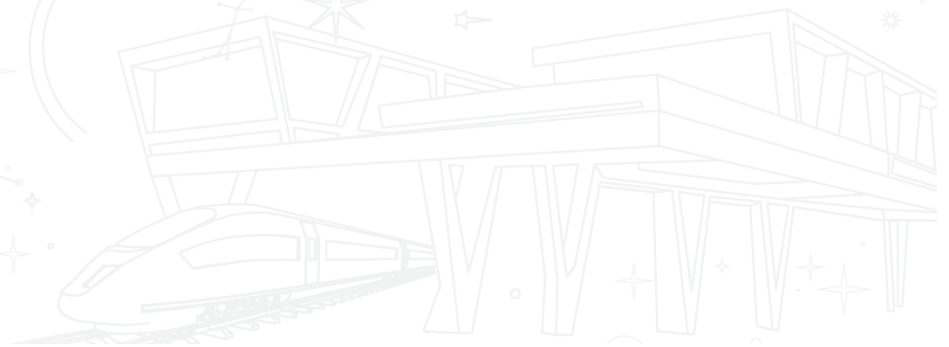


# Pre-Meeting Survey Results



How does transportation/mode options impact you and your organization?

- Affects quality of life
- Affects tourism industry
- Affects work force and access to employment
- Mode options, or lack thereof, affect relocation
- Strong reliance on personal vehicles



# Pre-Meeting Survey Results



Provide an example of an intermodal station which you have used and enjoyed.

- Miami Intermodal Center
- Washington DC Metro System
- Denver Colorado Light Rail RTD
- West Palm Beach & Miami Brightline Stations
- Seattle Link Light Rail





# Pre-Meeting Survey Results



What would you like to see at an intermodal station that would benefit your organization?



Access to buses, rideshare, and bikeshare services



Sufficient and affordable parking



Connectivity to nearby ports and regional destinations



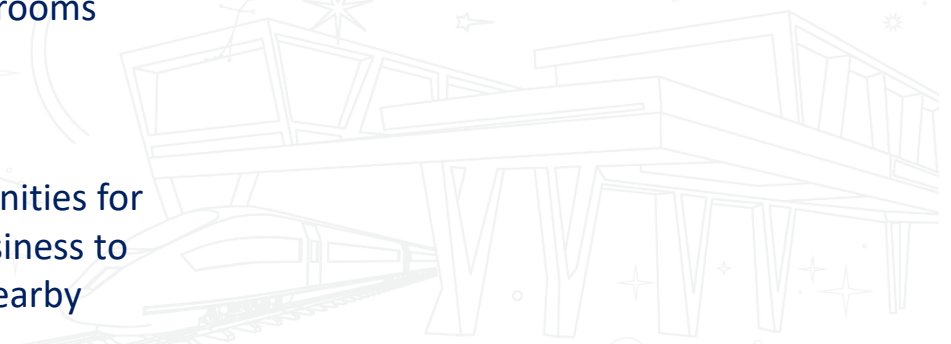
Adequate seating and restrooms



Marketable events and tourism opportunities



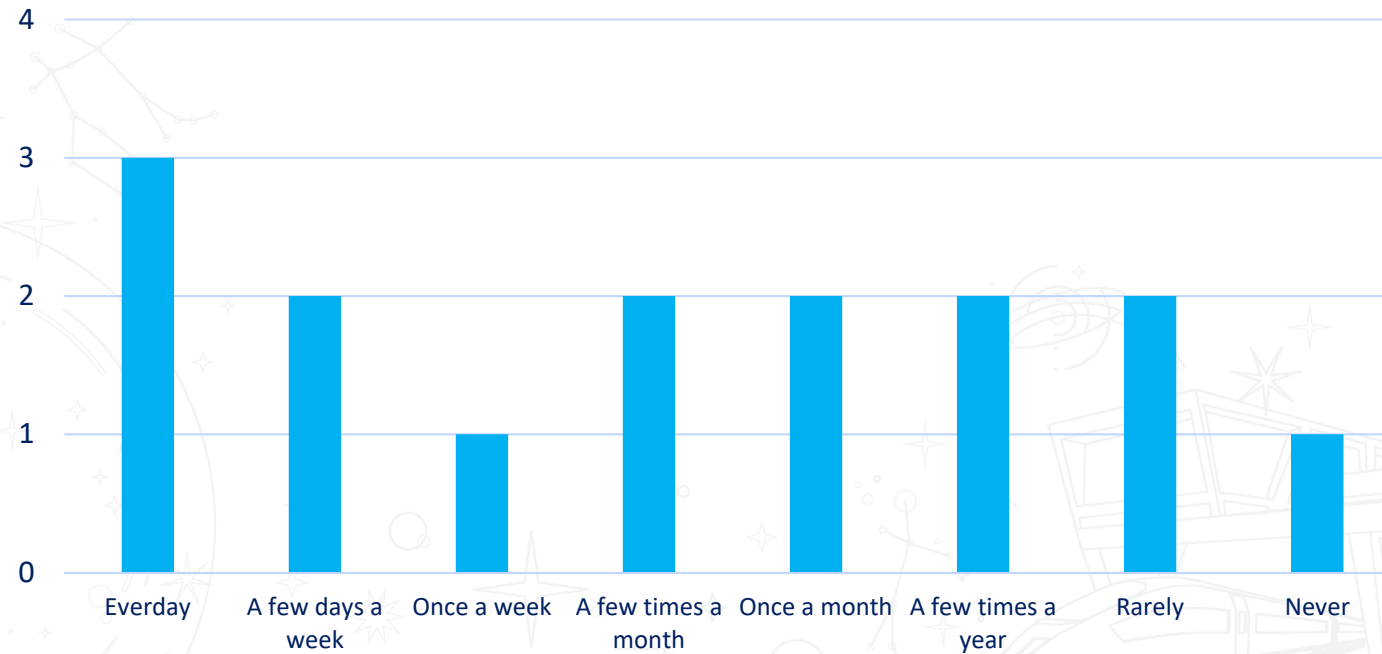
Opportunities for local business to locate nearby



# Pre-Meeting Survey Results



How often would someone your organization serves utilize an intermodal station?



## Purpose & Mission



- The Space Coast TPO Regional Intermodal Connections Committee is responsible for collaborating and making recommendations on modal choices and passenger rail initiatives.
- The **mission** of the committee is to build a passenger rail station and identify intermodal connections within Brevard County.



# Goals



- Generate passenger rail connection discussion, support, and partnerships
- Work to create connections to final destinations
- Understand intermodal grants and funding sources available
- Make informed recommendations to the SCTPO board



# Outcomes



- Approval from SCTPO Board for projects related to intermodal and passenger rail
- Obtain funding for intermodal projects through partnerships
- Better understand benefits and need of passenger rail
- Identify need for modal support including micro-mobility, transit, and non-auto modes





# What does “Intermodal” mean?



# Defining “Intermodal”



- The **combination** of transportation **modes** including air, space, sea, rail, road
- Facilitate transfers of people and goods between modes in an efficient and safe manner



Image Source: Palm Beach Post



# Why Intermodal?



The Environmental Protection Agency (EPA) reports that an average passenger vehicle emits roughly **404 grams of CO2 per mile**, which are reduced through other transportation modes

Brightline anticipates that the new Orlando extension will remove **72,000 metric tons of CO2** from the air annually

Brightline added **\$3.5 Billion** added to Florida's GDP through 2022

Brightline to have **2,000 +** jobs on average per year after the Orlando extension is completed

There are **63.7%** of Brevard County jobs with **½ mile** of transit

There are **6,766** Brevard County workers living within a **30-minute transit commute** of an employer

As the **second** busiest cruise port in the world for multi-day embarkations, Port Canaveral saw over **4.1 million passengers** in FY 2021-22

In September 2022, Melbourne International Airport saw **216k arrivals and 219k departures** within the U.S. alone

# USDOT Intermodal Passenger Connectivity Database

Points include:

1. Airports
2. Intercity bus stations
3. Intercity and transit ferry terminals
4. Light-rail transit stations
5. Heavy-rail transit stations
6. Passenger-rail stations on the national rail network served by intercity rail and/or commuter rail services
7. Bike-share stations open to the general public, IT-automated, and station based

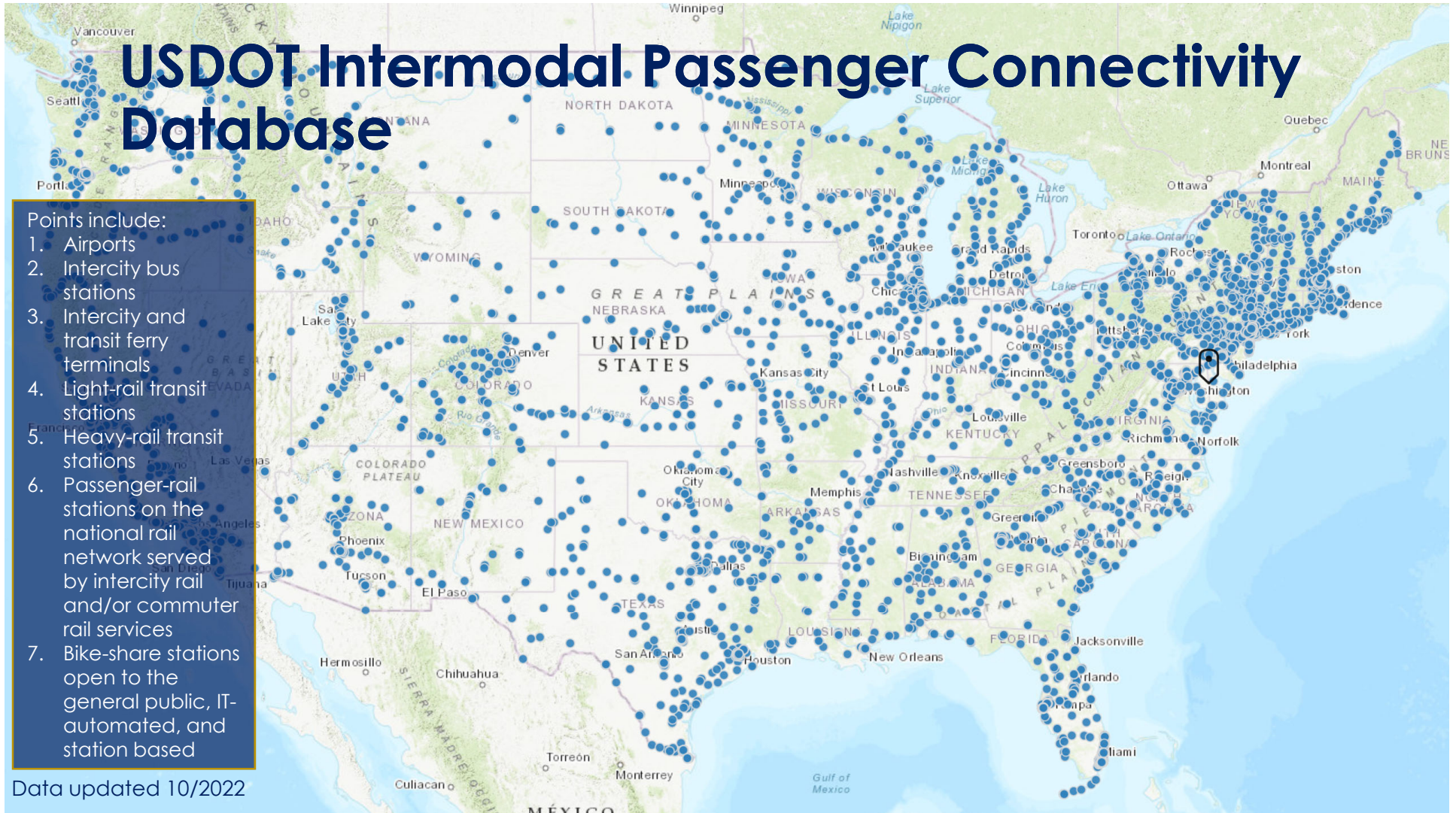
Data updated 10/2022

# USDOT Intermodal Passenger Connectivity Database

Points include:

1. Airports
2. Intercity bus stations
3. Intercity and transit ferry terminals
4. Light-rail transit stations
5. Heavy-rail transit stations
6. Passenger-rail stations on the national rail network served by intercity rail and/or commuter rail services
7. Bike-share stations open to the general public, IT-automated, and station based

Data updated 10/2022

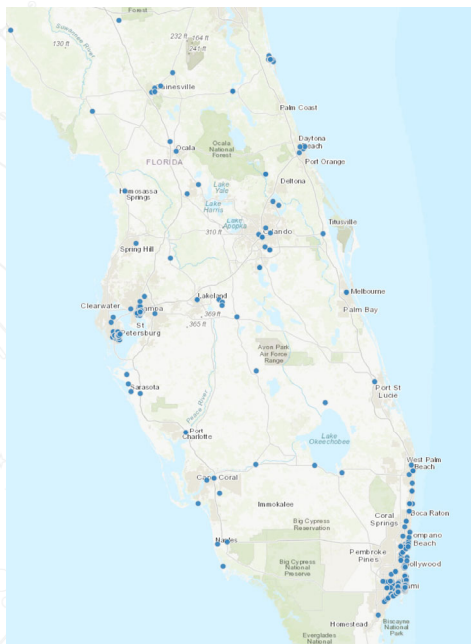


# USDOT Intermodal Passenger Connectivity Database



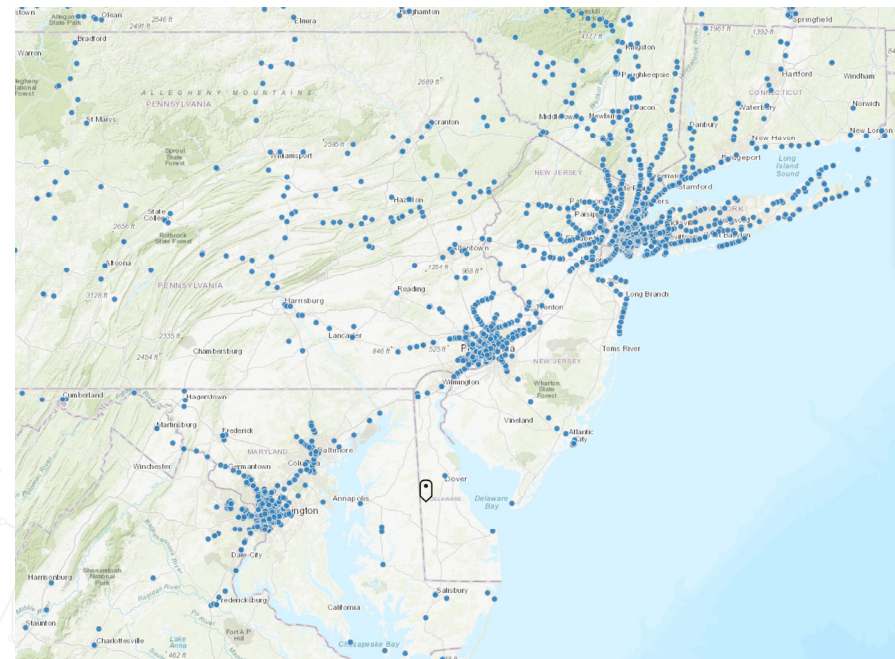
## Florida's Network

- Growing but sparse



## Northeast Network

- Dense build out from cities



# Influencing Factors – Infrastructure



## • Station Location

- Location on and adjacent to the railroad right-of-way
- Rehabilitate vacant / underutilized stations
- Consider natural disaster vulnerability / infrastructure resiliency
- Proximity to major population, employment, and tourism centers
- Ease of access by different modes to station site

## • Station Access

- Understand and provide modal choices to increase ridership
- Monitor mode of access via passenger surveys to further build out

## • Station Surroundings

- Transit Oriented Development (TOD) and desired destinations
- Integrate land use and transportation
- Placemaking features, wayfinding
- Comfortable, safe, and convenient station facilities and amenities (e.g., WiFi, cafe, seating)

# Influencing Factors – Coordination



- **Partnership among local governments, transit & commuter rail operators, public/private bus operators, freight railroads**
- **Federal grants available**
  - USDOT BUILD Grant (previously TIGER) – Better Utilizing Investments to Leverage Development
  - Enhancing Mobility Innovation – technology projects to promote transit
  - FRA CRISI Grant – Consolidated Rail Infrastructure and Safety Improvements
    - City of Boca Raton and Brightline received a CRISI Grant from the USDOT with the help of bipartisan requests from members of congress

# Intermodal Station Takeaways



## Intermodal:

the combination of transportation modes including **air, sea, rail, road**

### Why?

- Improved Mobility
- Convenience
- Benefits All Connecting Modes

1/24/2023

### Defining Success

- Quality features, mode choices, station amenities, transit-supportive land use
- Convenient technology
- Public/private partnership through development

### Brightline Example

- Privately owned
- Station designs facilitate convenient access to a variety of modes
- South Florida, Orlando, and Tampa



# Breakout Sessions





# SOAR (Strengths, Opportunities, Aspirations, Results)





## Strengths

1. What do you excel at?
2. What are your greatest accomplishments?
3. What are you most proud of?
4. What makes you unique?



## Opportunities

1. What partnerships would lead to greater success?
2. What changes and trends in the market align with your strengths?
3. What threats do you see?
4. Are there gaps in the market that you could fill?



## Aspirations

1. What do you want to achieve in the future?
2. What should your future business look like?
3. How can you make a difference?
4. What are you passionate about?



## Results

1. What measures will tell you that you are on track to achieve success?
2. How do you translate your vision of success into tangible outcomes?
3. How do you know when you've achieved your goals?



# Breakout Groups



# Future Brevard Transportation Options – Vision Board

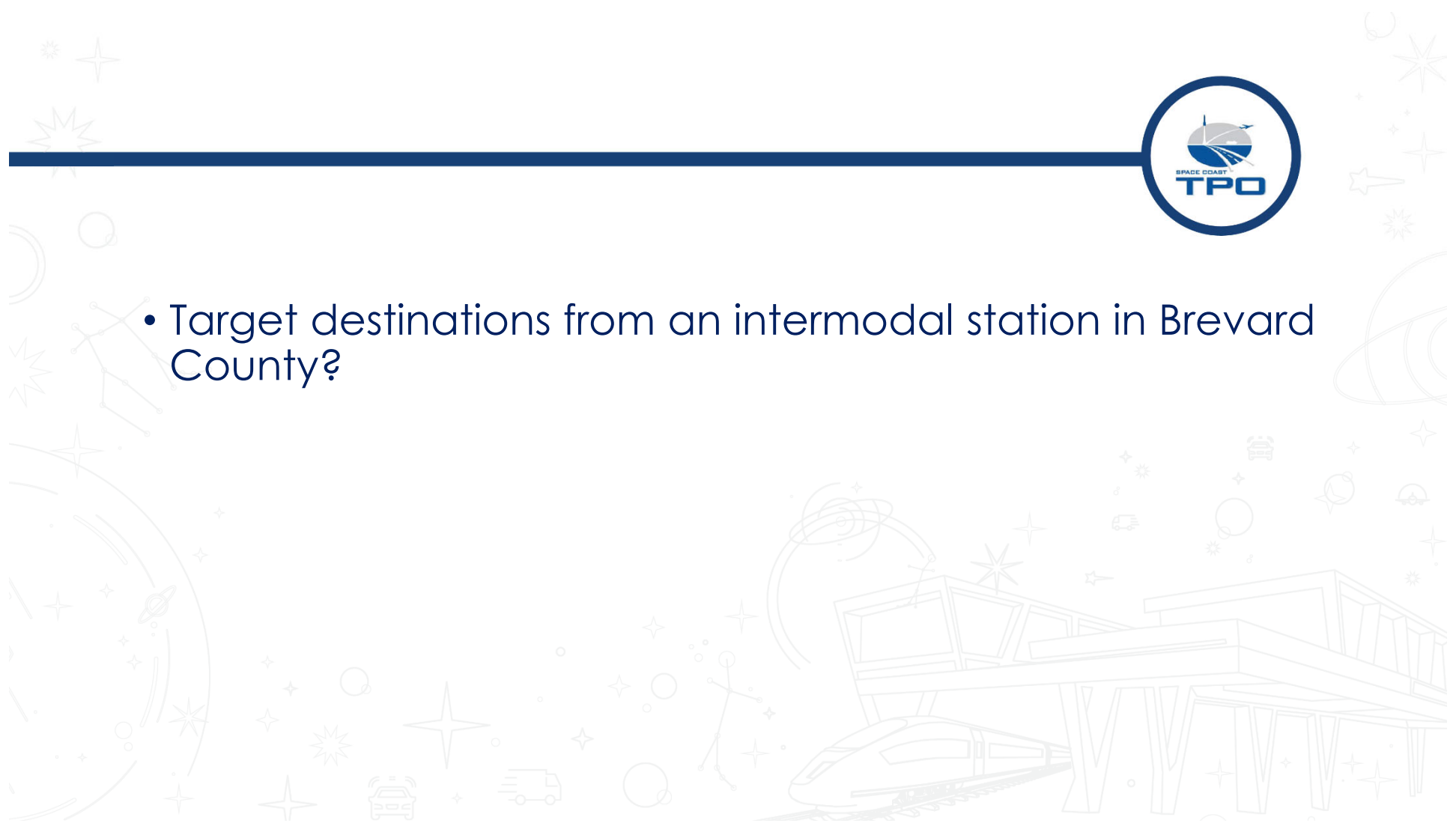




# Breakout Groups



- Target destinations from an intermodal station in Brevard County?





# Summarize Meeting #1



# Next Steps



# Next Steps



- Next Committee Meeting: Mode Choices and Passenger Rail | Trains... Planes and Automobiles
  - Wednesday, March 15, 2023 | 1:30 pm - 3:30 pm
  - Cocoa Civic Center | 430 Delannoy Ave, Cocoa, FL 32922
- More to come...
  - Building Partnerships | Getting your Partnerships Right on Track
  - Think Regionally, Act Locally | Passengers on the Train
  - Transportation Funding & Safety | Punching our Ticket
  - Shared Vision | All Aboard



# Thank you!

Be sure to return your name tags and  
tent cards for the next meeting!