



FIRE RESILIENCY IN BREVARD COUNTY



For more information about the Space Coast Transportation Planning Organization's resiliency planning go to <https://www.spacecoasttpo.com/what-we-do/planning/resiliency-planning>

Roadways in Brevard County are impacted by fire and smoke today.

The Transportation Resiliency Master Plan (RMP) identifies a baseline for the impacts of fire and other natural hazards on roads in Brevard County. This booklet summarizes key takeaways and impacts identified in the Transportation RMP.

What do we mean by fire?



Heat and Drought

Wind direction, wind speeds, temperature, and humidity all play a role in the start and spread of fires. Drought creates conditions where more fires spark on medians and grassy shoulders of roads.



Smoke

Smoke management is critical to preserving visibility on roads and preventing smoke at critical facilities like hospitals, airports, and schools. Wetland wildfires can burn unnoticed for long periods of time until smoke reduces visibility for drivers.



Wildfires

Land management agencies, like the Florida Forest Service, perform prescribed burns to improve and manage habitats. Some natural lands are not managed and can be at risk for a wildfire. This is particularly dangerous where natural and developed land meet.

Planned projects offer opportunities to include resiliency elements to address fire.

16 projects in the Long Range Transportation Plan, Cost Feasible Plan are on roads impacted by fire

10 upcoming FDOT resurfacing projects are on roads impacted by fire

More funding opportunities than ever before are available from the federal and state government!

BREVARD COUNTY

Brush fire causing smoky conditions on SR-407 in Brevard County



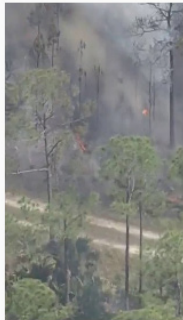
By [Sarah Wilson, WFTV.com](#)

March 23, 2022 at 4:48 pm EDT



I-95 in Brevard as firefighters battle wildfire

Voluntary evacuation lifted



BREVARD COUNTY, Fla. - Interstate 95 was closed for most of the day due to smoke from a wildfire. Authorities are working to clear the road.

44%
of roads in
Brevard are
impacted

ky
n Brevard

**Brevard County reopens
streets battle 1,600-acre**

for several Indian River streets has been

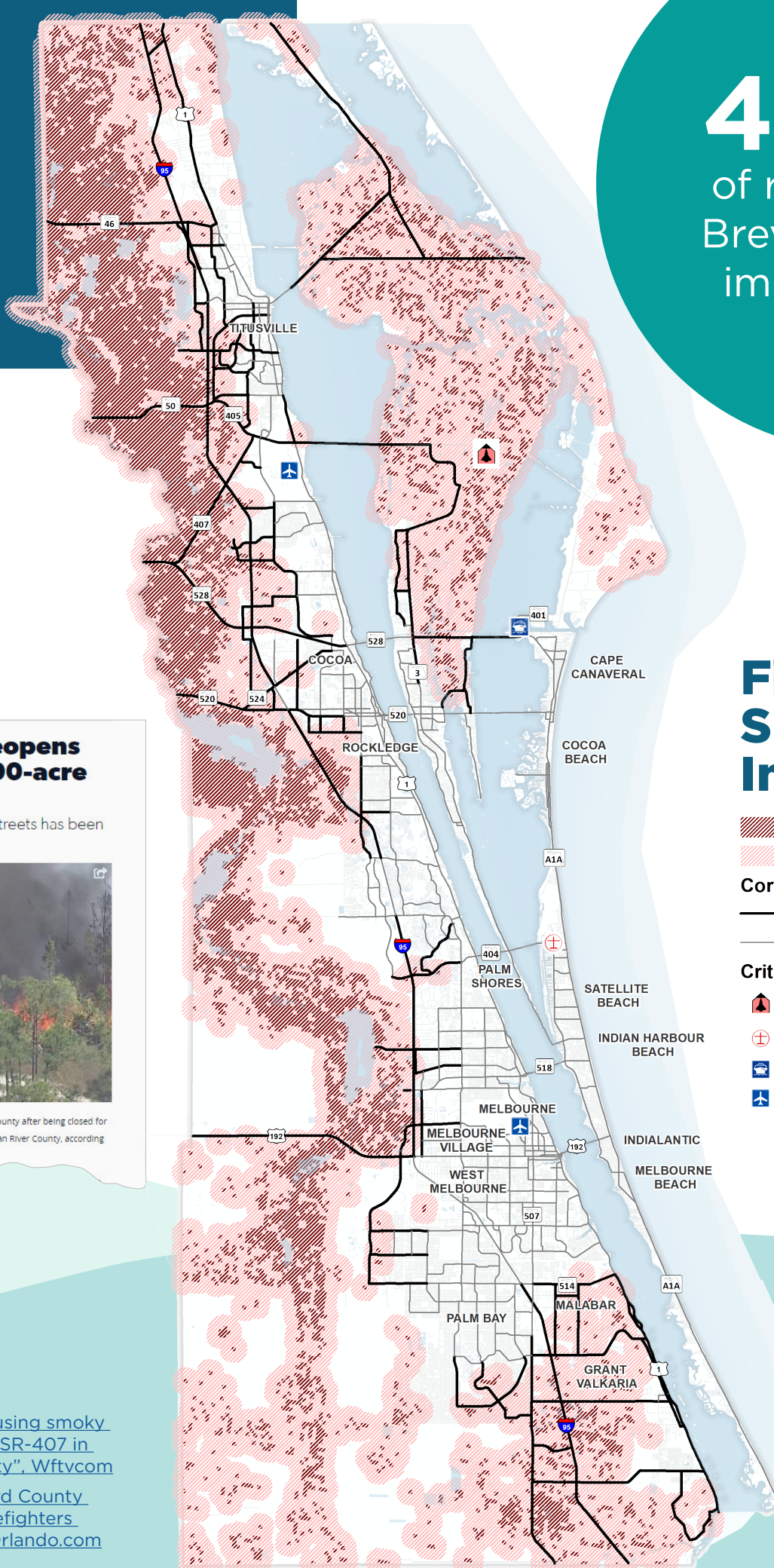


ate 95 reopened Friday evening in Brevard County after being closed for
m a 1,600-acre brush fire in neighboring Indian River County, according

at the "Sebastian Buff"

["Brush fire causing smoky
conditions on SR-407 in
Brevard County", Wftv.com](#)

["I-95 in Brevard County
reopens as firefighters
battle", ClickOrlando.com](#)

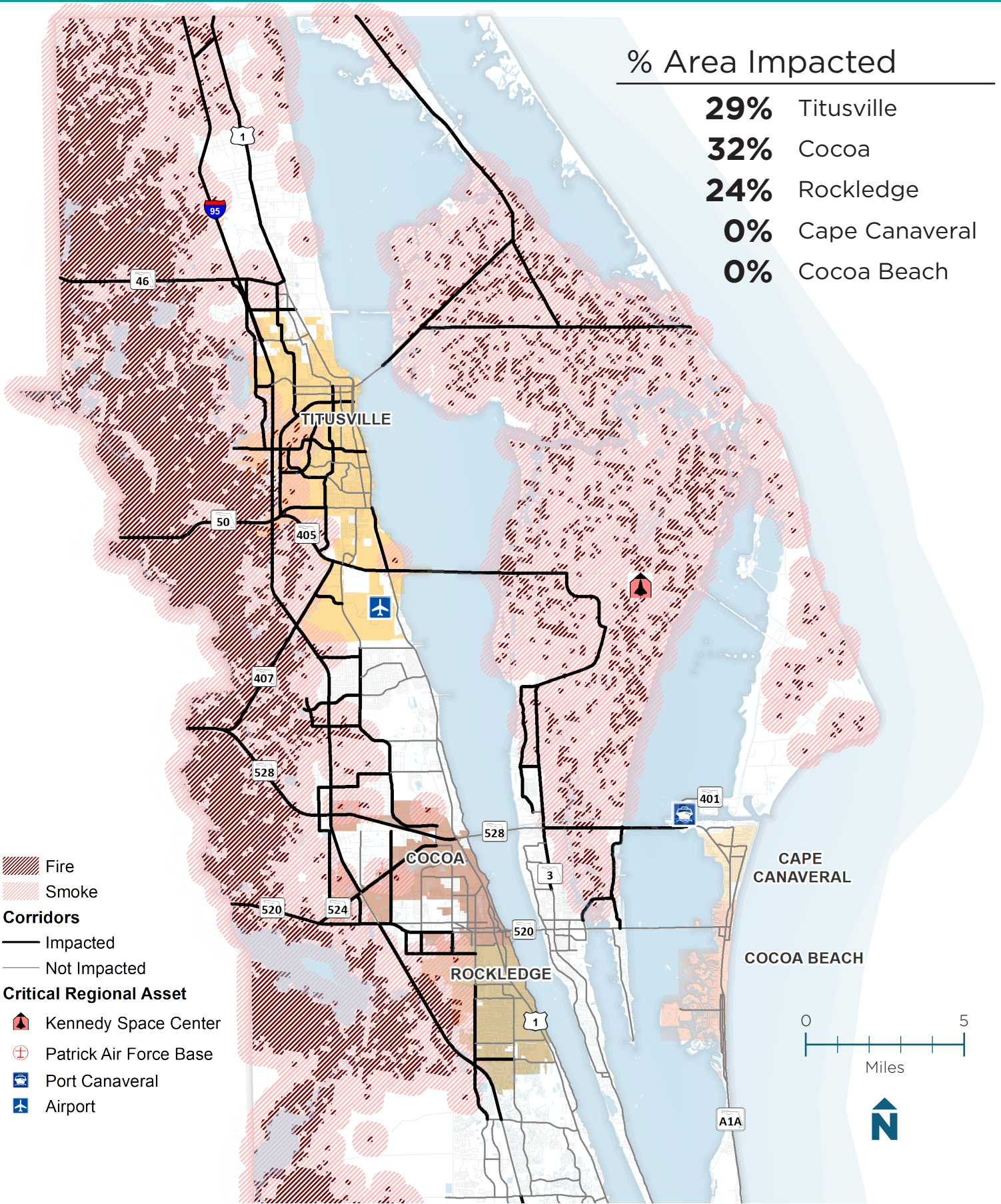


Fire and Smoke Impacts

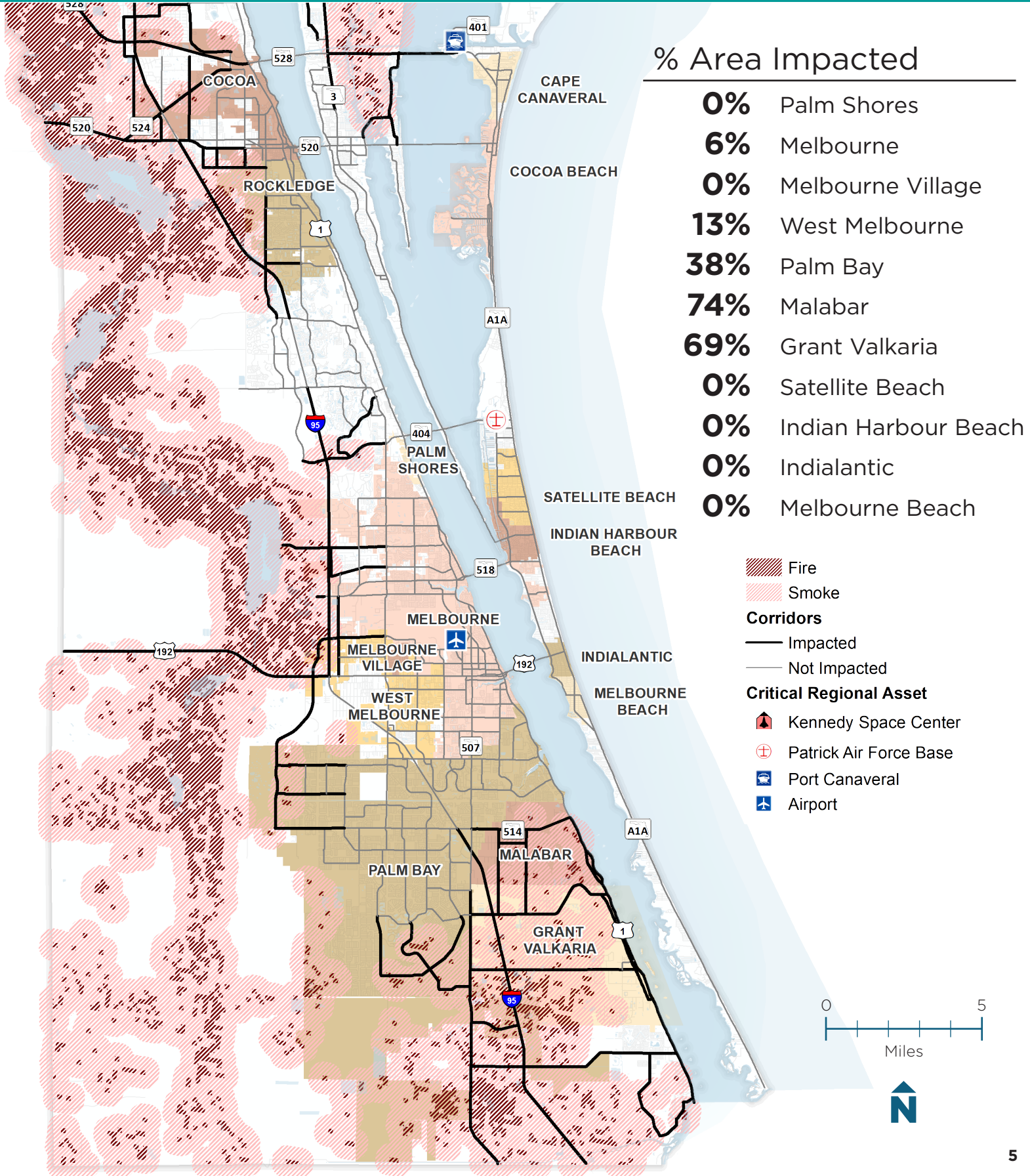
- Fire
- Smoke
- Corridors**
- Impacted
- Not Impacted
- Critical Regional Asset**
- Kennedy Space Center
- Patrick Air Force Base
- Port Canaveral
- Airport



Percentage of Incorporated Area Impacted by Fire and Smoke



Want to zoom in? Turn layers on and off?
 Try the online map at <https://arcg.is/OTvOq8>



Communities in Brevard County are impacted differently by fire.

A resilient transportation system serves everyone in Brevard County.

In Brevard County:



1 in 4

(137,000) residents are over the age of 65



1 in 3

(66,000) households include someone with a disability



1 in 3

(175,000) residents live below or near the poverty line



1 in 20

(11,000) households do not have a car

Source: 2019 American Community Survey

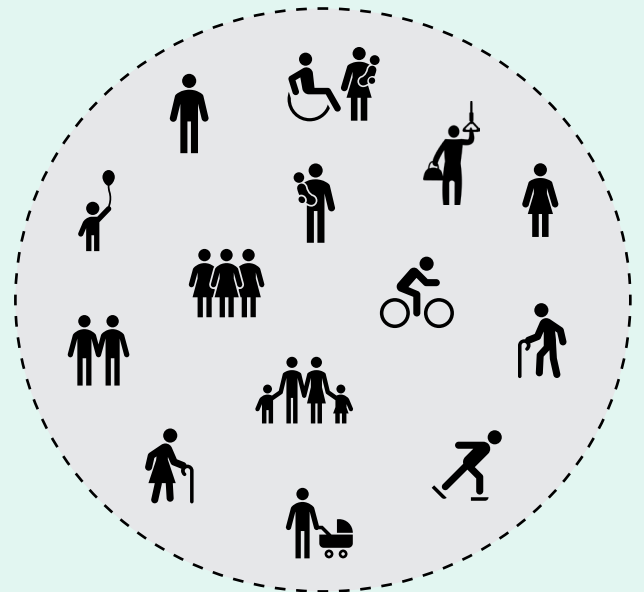


585,507

people live in 230,417 households



Resiliency projects consider the needs of **everyone**



Methodology

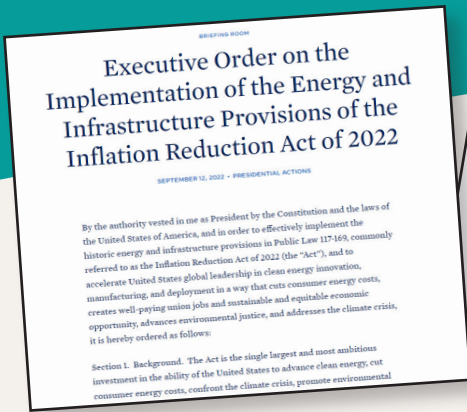
The Transportation RMP followed a two-step process to identify roads impacted by fire in Brevard County.

1 Identify Impacted Areas: The 2020 Wildfire Hazard Potential (WHP) identifies areas where wildfires are likely. A half-mile buffer around WHP areas was used for smoke.

2 Identify Impacted Roads: Roads that go through impacted areas are identified as being impacted by fire.

A more detailed explanation of the analysis methodology can be found in the Transportation RMP documentation.

Funding for Transportation Resiliency is Available for Brevard County.



Over
\$200 Million
in New Grants
Beyond
Programmed
Funding

The Inflation Reduction Act contains \$2.6 billion for nature-based coastal resilience projects, such as wetlands and seagrass restoration. The BIL's investment and focus on resilience continues the policy set in 2015's Fixing America's Surface Transportation (FAST) Act, requiring MPOs to consider resiliency in the transportation planning process.

Promoting Resilient Operations for Transformative, Efficient, and Cost-Saving Transportation (PROTECT) Formula Program: MPOs in coastal states are eligible for at-risk coastal infrastructure grants for strengthening, stabilizing, hardening, elevating, relocating, or otherwise enhancing the resilience of highway bridges, roads, pedestrian walkways, and bicycle lanes, and associated infrastructure.

FHWA National Highway Performance Program (NHPP): Added eligibility for measures that increase resiliency to the impacts of sea level rise, extreme weather events, flooding, wildfires, and other natural disasters

Rebuilding American Infrastructure with Sustainability & Equity (RAISE): Opportunity to incorporate resiliency strategies to help urban and rural communities move forward on projects that modernize roads, bridges, transit, rail, ports, and intermodal transportation.

PROGRAMMED RESILIENCY FUNDING OPPORTUNITIES

Funding Sources with Added Focus/Eligibility for Resiliency

Resilient Florida: Planning Grants

Prioritizes the most vulnerable infrastructure to adverse impacts from flooding of rainfall events, storm surge, and sea level rise.

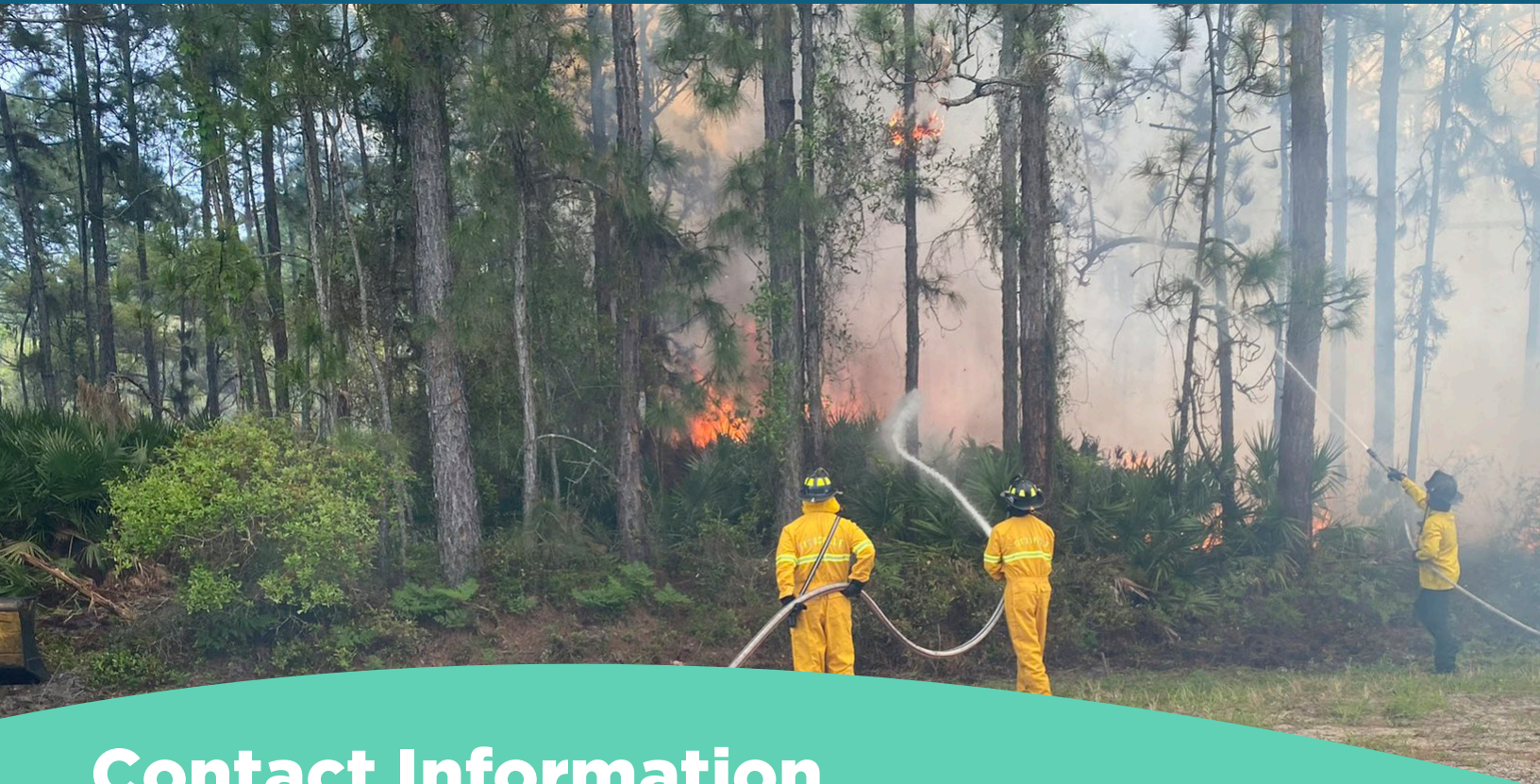


Florida Resilient Coastlines Program (FRCP) Grant funding for both Planning and Implementation projects that further coastal resilience.



Community Planning Technical Assistance Grants Used to assist with disaster recovery, resiliency, and economic development planning for rural and suburban areas.





Contact Information

 Sarah Kraum, Senior Transportation Planner

 (321) 690-6890

 sarah.kraum@sctpo.com

 [https://www.spacecoasttpo.com/what-we-do/
planning/resiliency-planning](https://www.spacecoasttpo.com/what-we-do/planning/resiliency-planning)