



*Project Partners*

Welcome to the

# Coast to Coast Connector Summit

Winter Garden, Florida  
City Hall  
October 1, 2014

# *Why are we here?*

---

## **Objectives**

1. Inform key stakeholders on the current state of the C2C Initiative, creating a common baseline of knowledge
2. Establish a framework for how to organize and implement a regional system of local trails

## **Purpose**

To discuss C2C Objectives, Challenges, Tasks, and Opportunities

# *The Office of Greenways and Trails Mission*

---

Establish the  
***Florida Greenways and Trails System (FGTS)***  
for recreation, conservation and  
alternative transportation to support

***Economy***

***Health***

***Recreation***

***Quality of Life***

***Tourism***

***Transportation***

***Conservation***

# *Accomplishing the Mission*

## **OVERVIEW...**

**Planning**

**Identification and Prioritization**

**Coordination**

**Project Development**

**Acquisition**

**Designation**

**Promotion and Information**

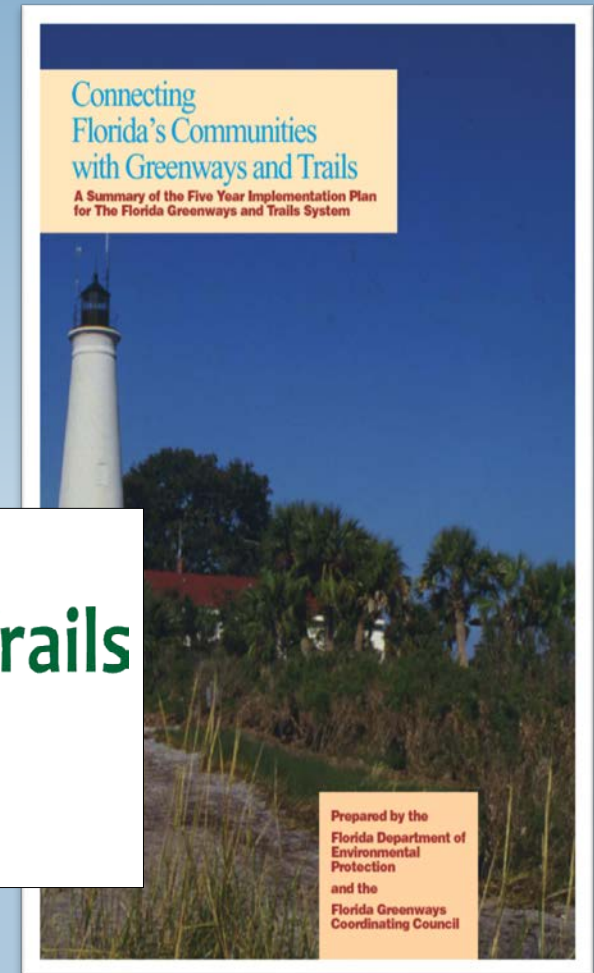


# 2013-2017 Florida Greenways and Trails System Plan

## The *Florida Greenways and Trails System Plan 2013-2017*

is the first update to the FGTS Plan. It outlines the new vision for the Florida Greenways and Trails System (FGTS).

Florida  
Greenways & Trails  
System  
Plan



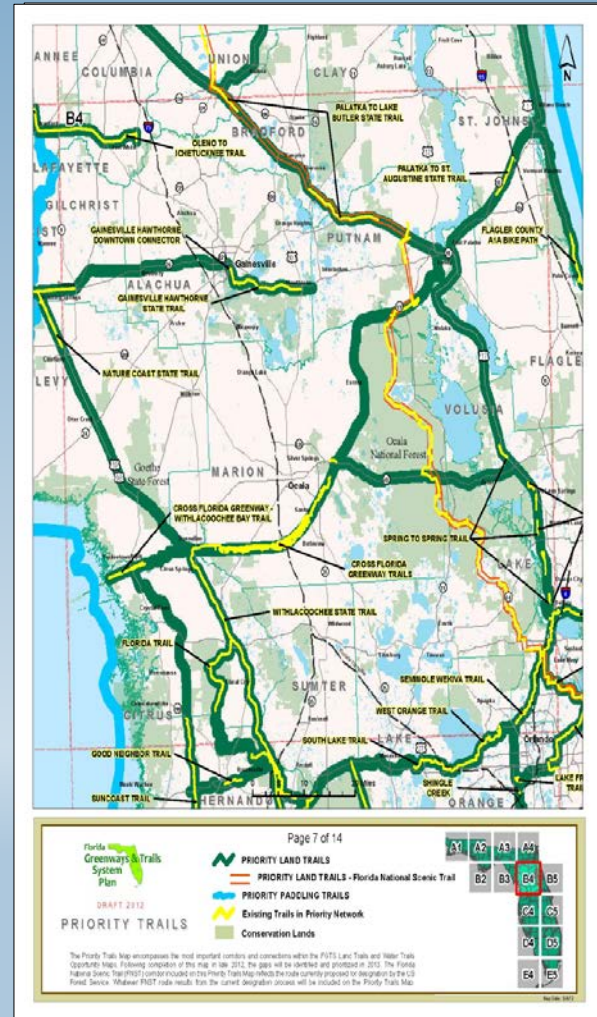
# FGTS Process

## Land Trail Opportunity

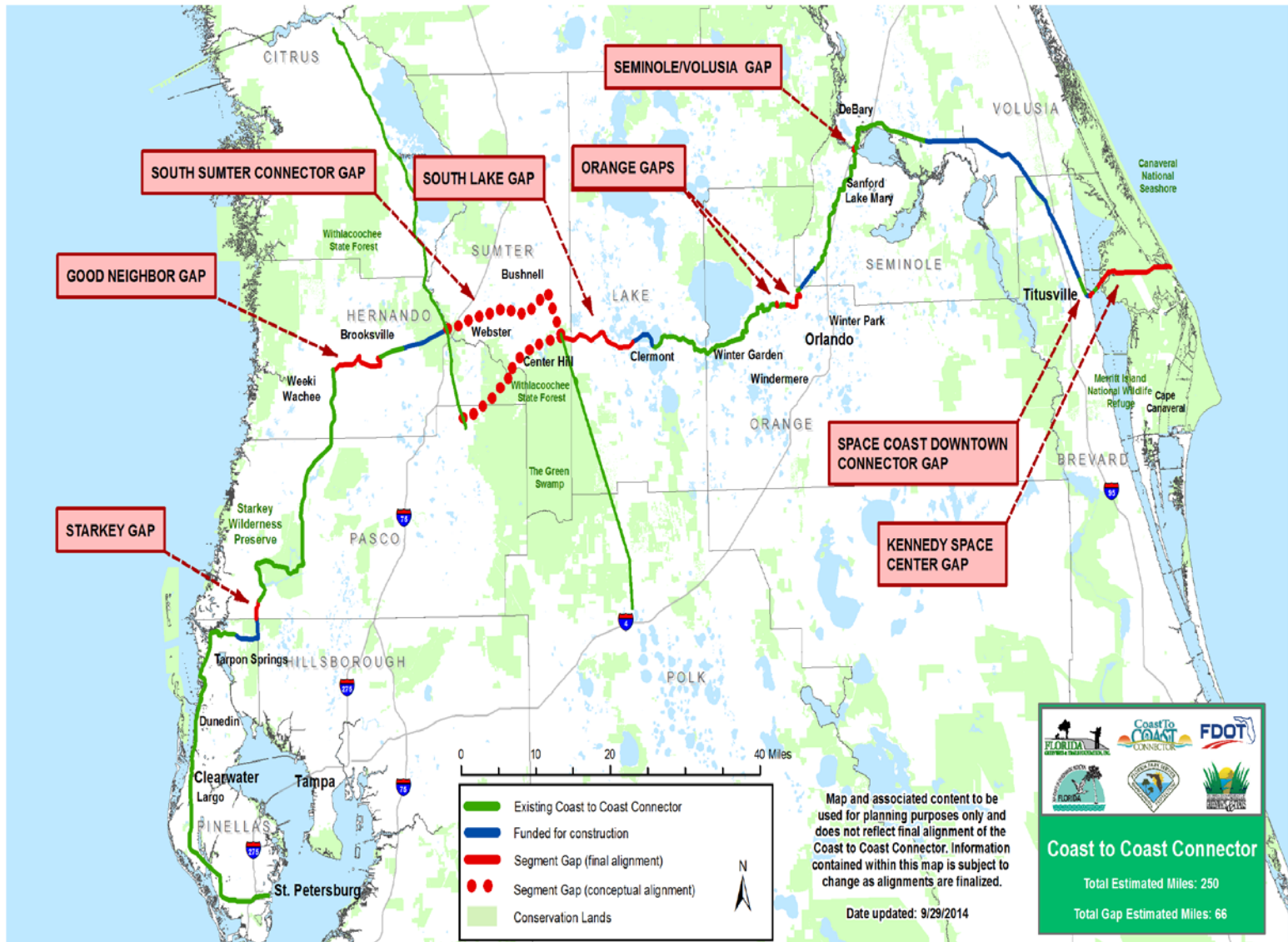
## VS

## Priority Land Trail

### Priority Trails Map

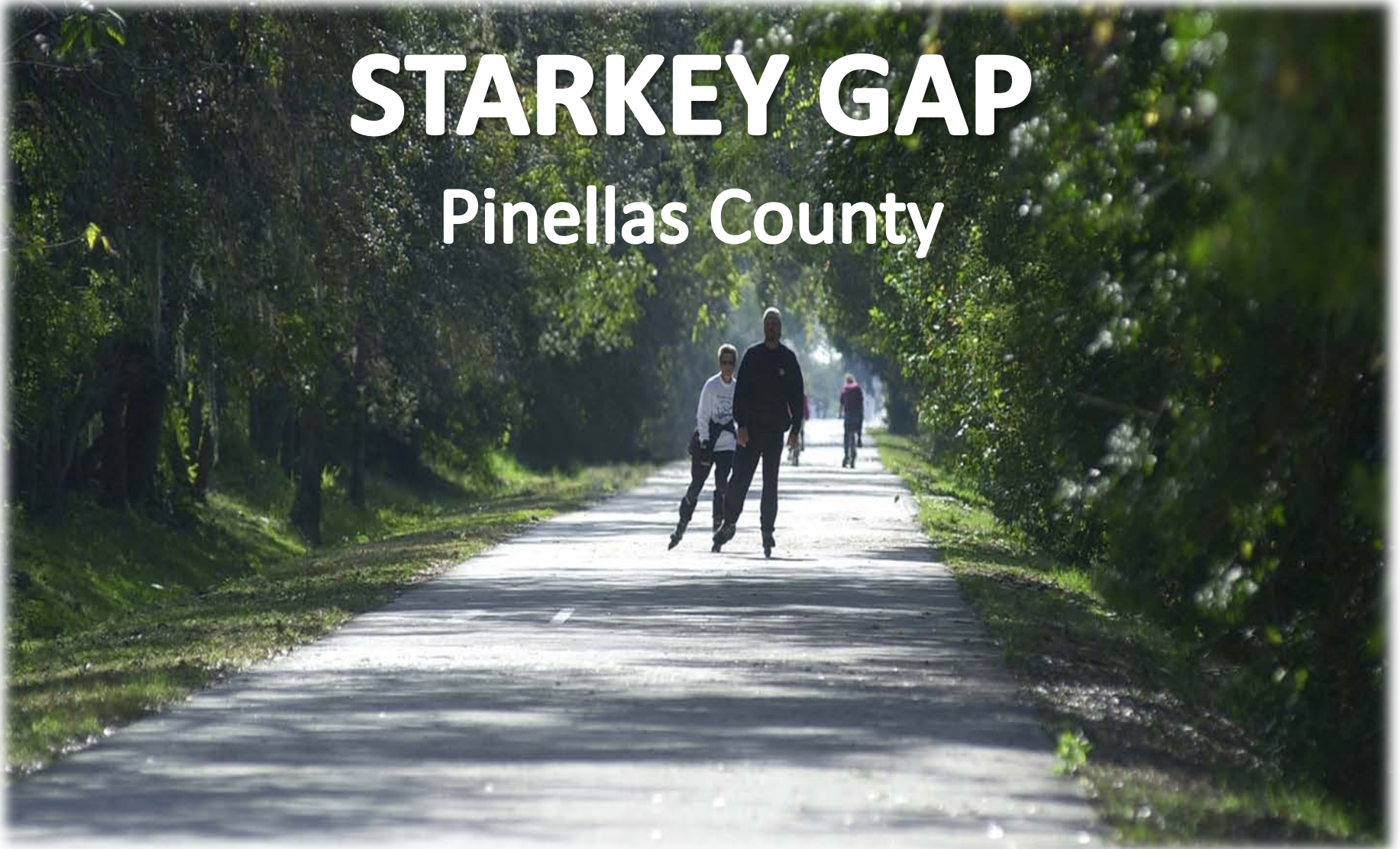


# The Coast to Coast Connector



# COAST TO COAST TRAIL

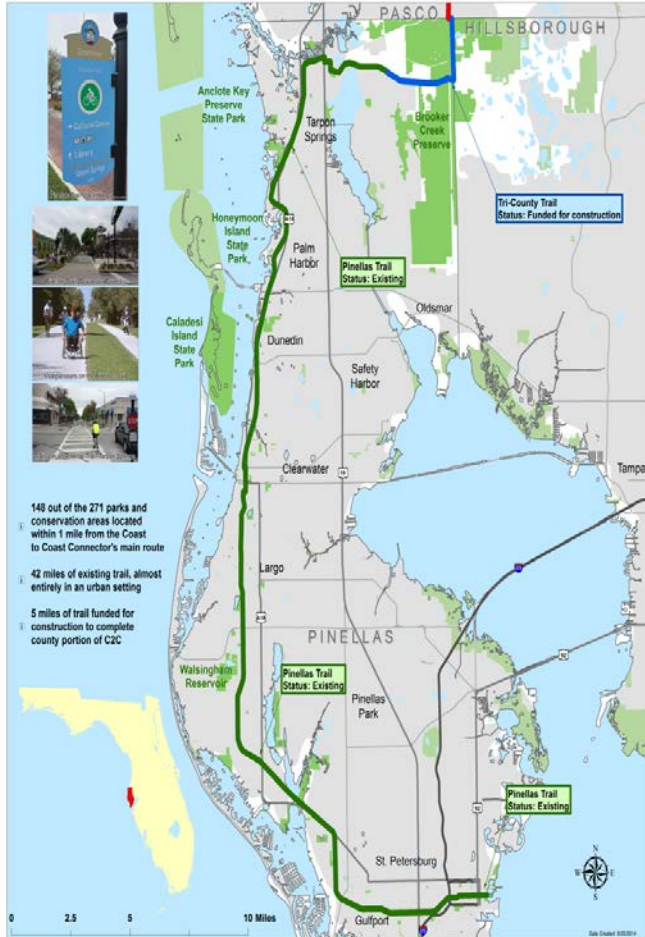
## STARKEY GAP Pinellas County





# Fred Marquis Pinellas Trail

## Pinellas County



148 out of the 271 parks and conservation areas located within 1 mile from the Coast to Coast Connector's main route

42 miles of existing trail, almost entirely in an urban setting

5 miles of trail funded for construction to complete county portion of C2C

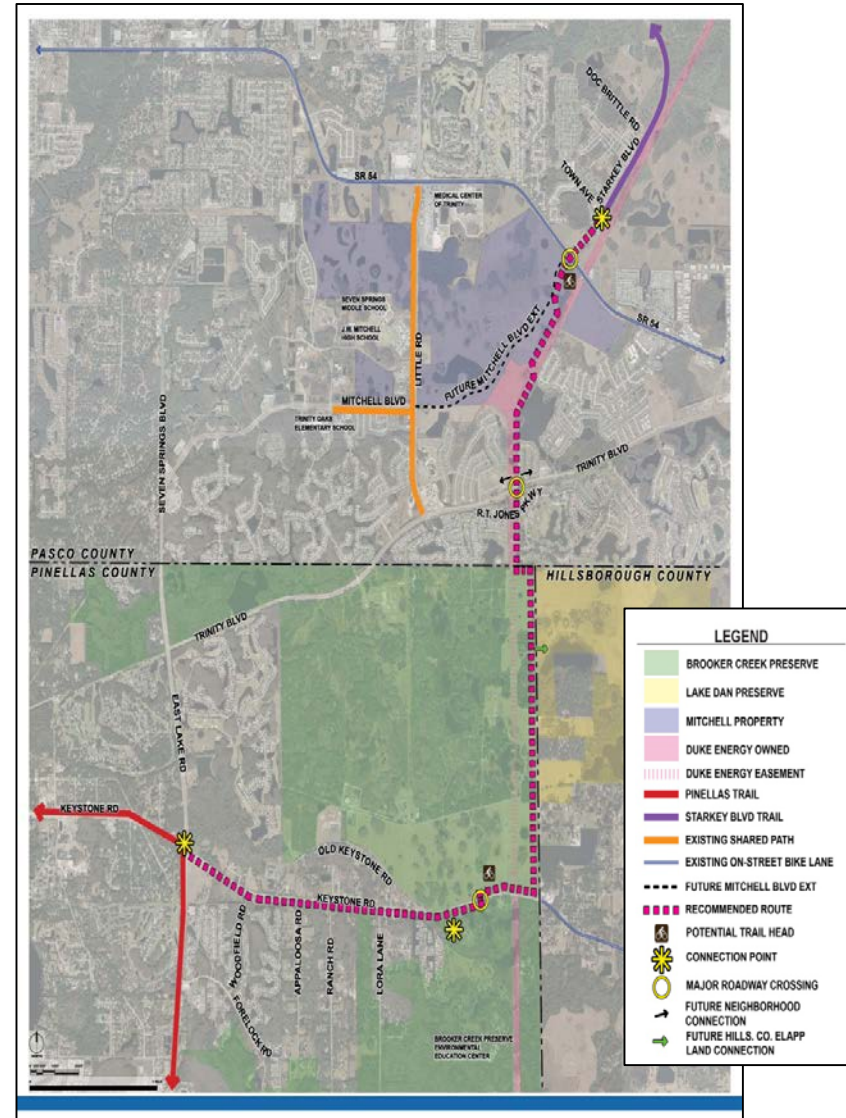


# Coast to Coast Trail – Starkey Gap

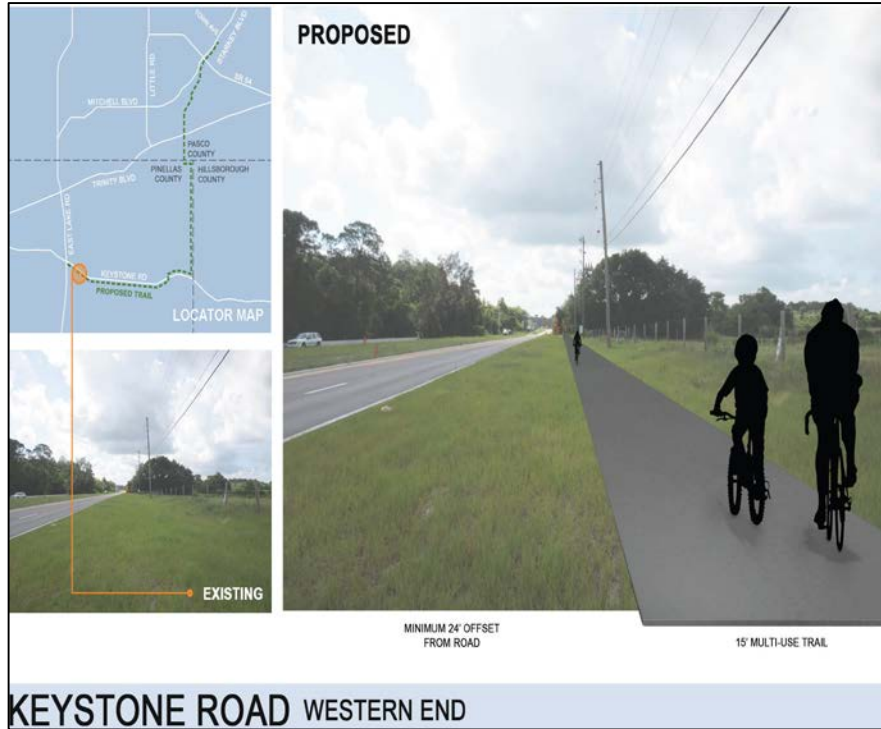
- Connects the Pinellas Trail to the Starkey Wilderness Trail and the Brooker Creek Preserve
- Future connection to Hillsborough County



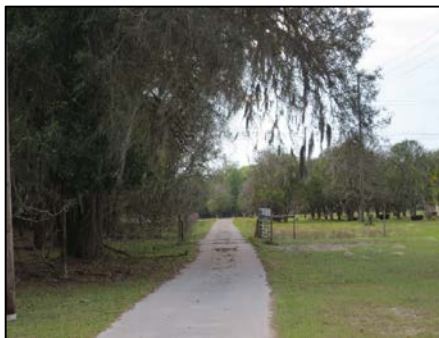
Photos from public information workshop - April 2013 at the Brooker Creek Environmental Education Center



# Coast to Coast Trail – Starkey Gap



Runs parallel to two-lane undivided roadway and through the Preserve.



# Coast to Coast Trail – Starkey Gap



# *Coast to Coast Trail – Starkey Gap*

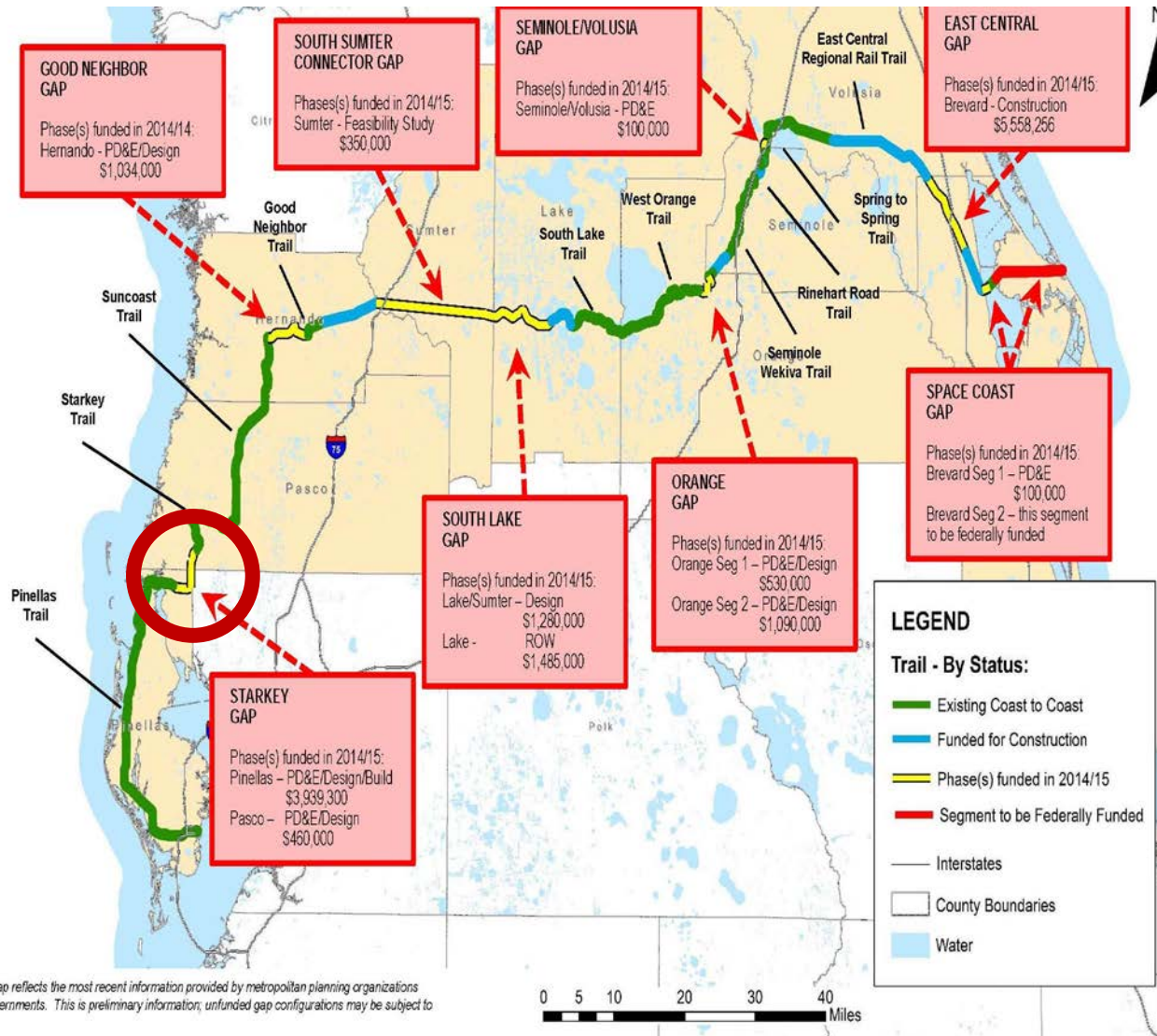
## **PINELLAS TRAIL AMENITIES & SERVICES**

- **Mile Marker Program | Emergency Decals**
- **Pinellas Trail Security Task Force**
- **Pinellas Trails, Inc.**
- **Auxiliary Trail Ranger Volunteer Program**
- **Trail access to parks, schools, and major employment centers**



**TRI-COUNTY TRAIL  
(STARKEY GAP)  
PASCO COUNTY SEGMENT**

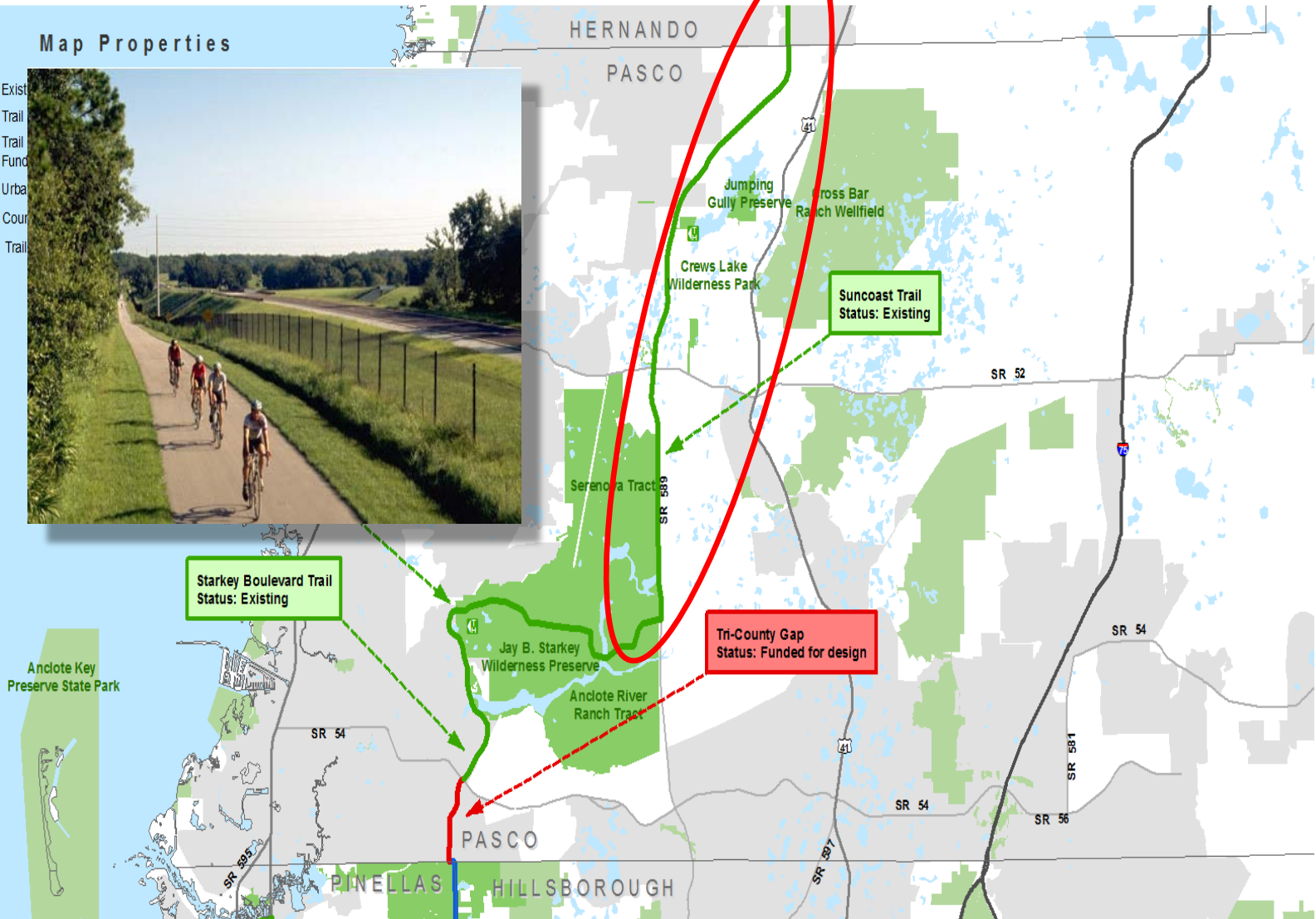
# Tri-County Trail



# Tri-County Trail

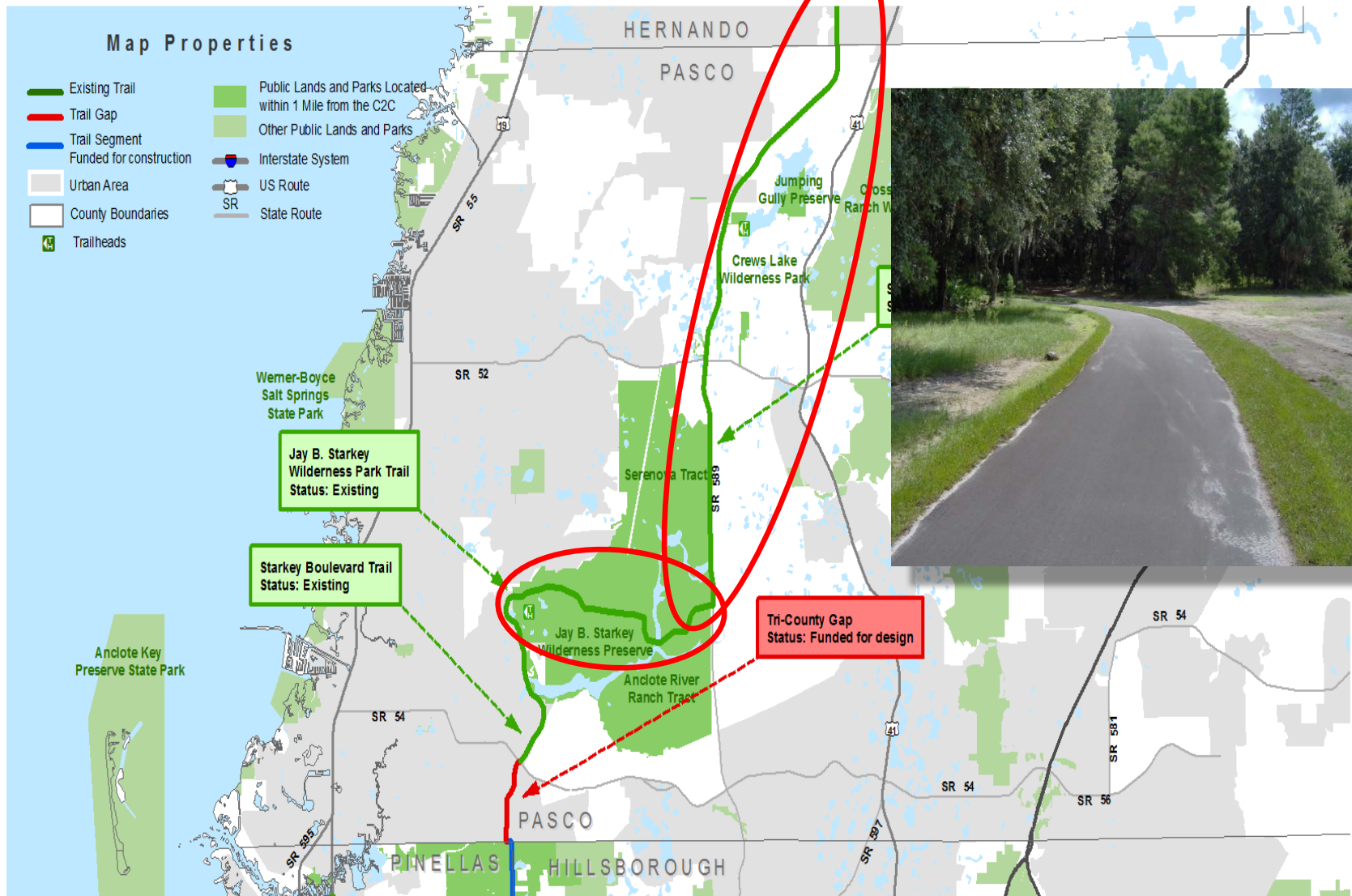
## Map Properties

- Existing Trail
- Trail
- Trail Fund
- Urban
- County
- Trail

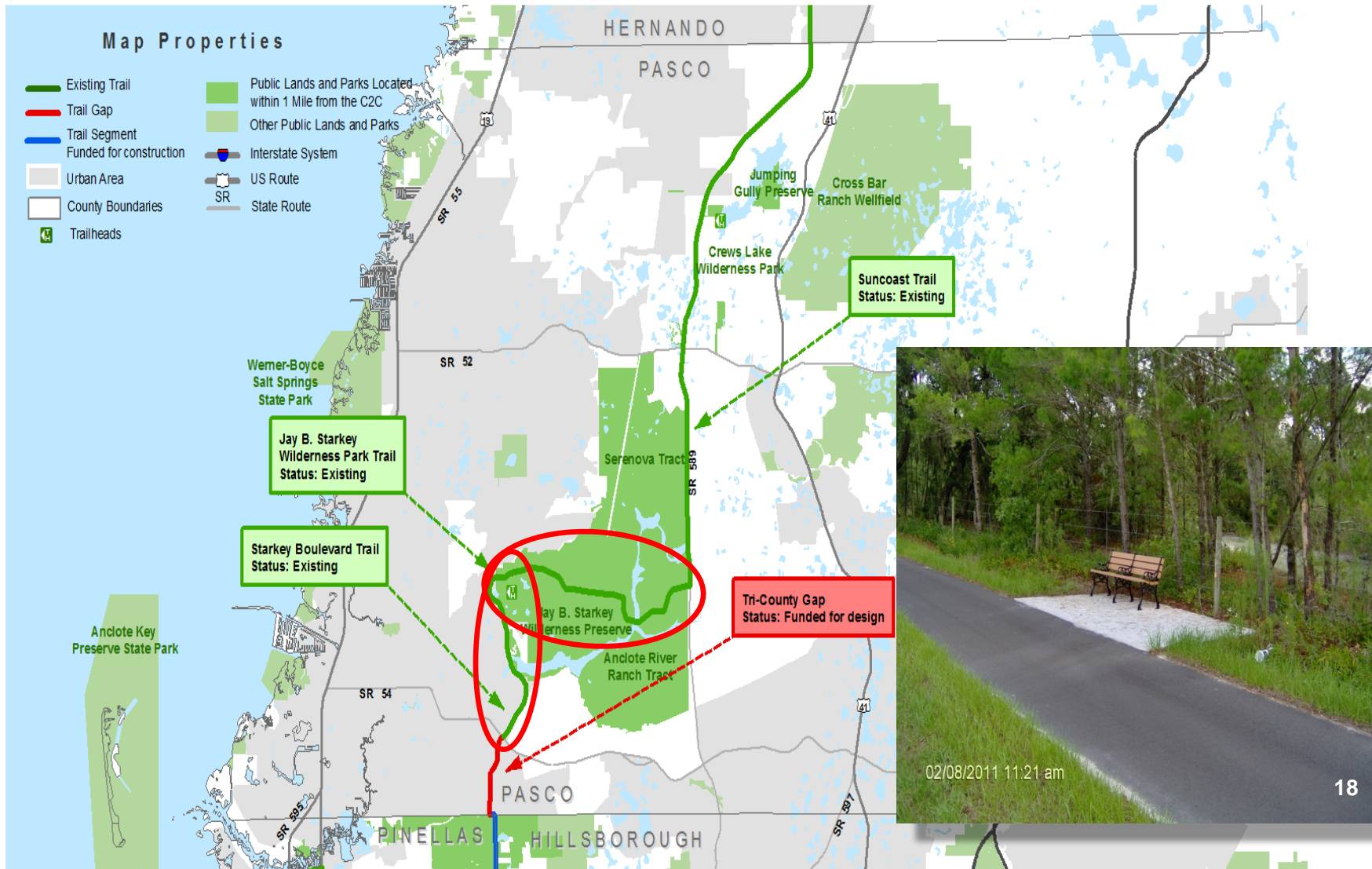




# Tri-County Trail



# Tri-County Trail



# Tri-County Trail



Length:	2.39 Miles
Phase Complete:	Tri-County Trail Connection Study (Route Study)
Estimated Cost:	Design - \$460,000 Construction - \$1,605,000 (unfunded)
Connections:	South – Tri-County Trail (Pinellas Segment) Pinellas Trail North – Starkey Boulevard Trail Jay b. Starkey Wilderness Trail Suncoast Trail
Character:	Suburban to Rural

# Tri-County Trail

## TRI-COUNTY TRAIL CONNECTION STUDY



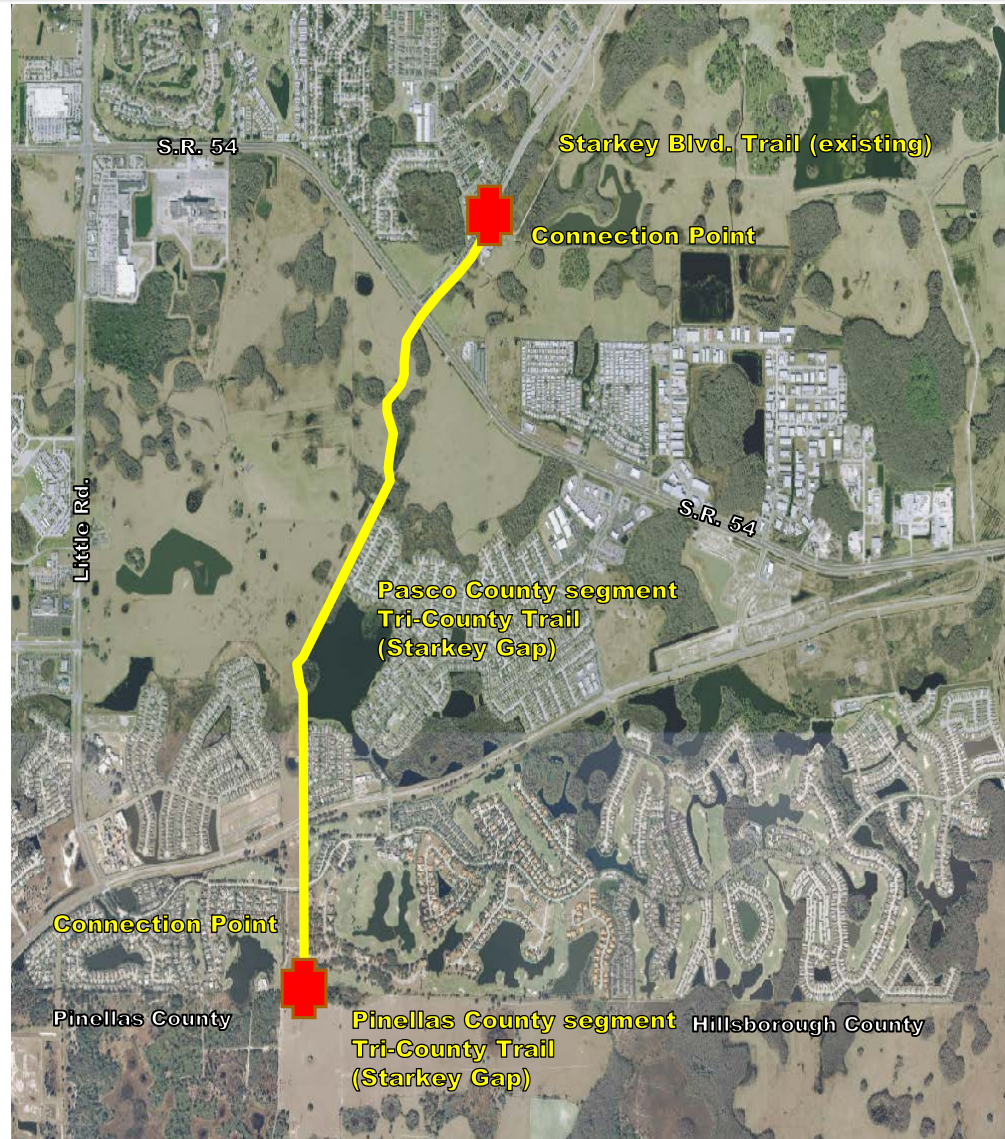
PASCO COUNTY MPO & PINELLAS COUNTY MPO



FEBRUARY 2014

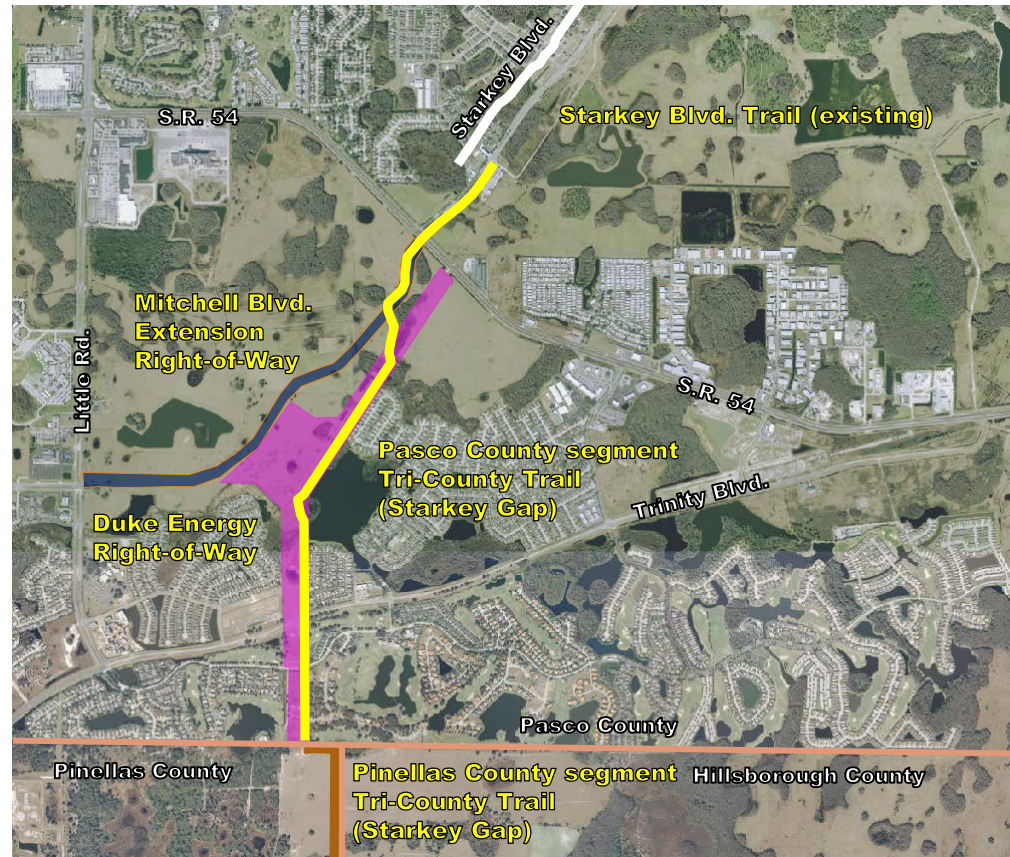
# Tri-County Trail

## Connections Pasco County Segment Tri-County Trail



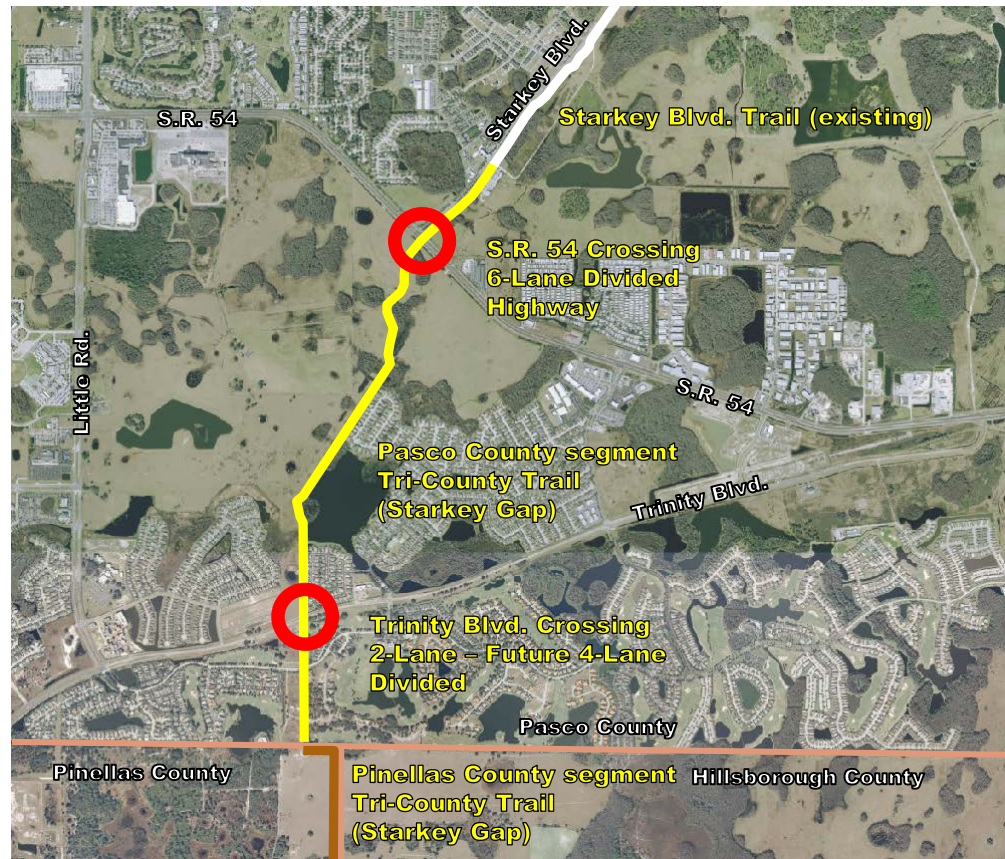
# Tri-County Trail

Issues  
Right-of-Way  
Pasco County Segment  
Tri-County Trail



# Tri-County Trail

Issues  
Road Crossings  
Pasco County Segment  
Tri-County Trail



# Tri-County Trail

## Issues Trail Amenities Pasco County Segment Tri-County Trail

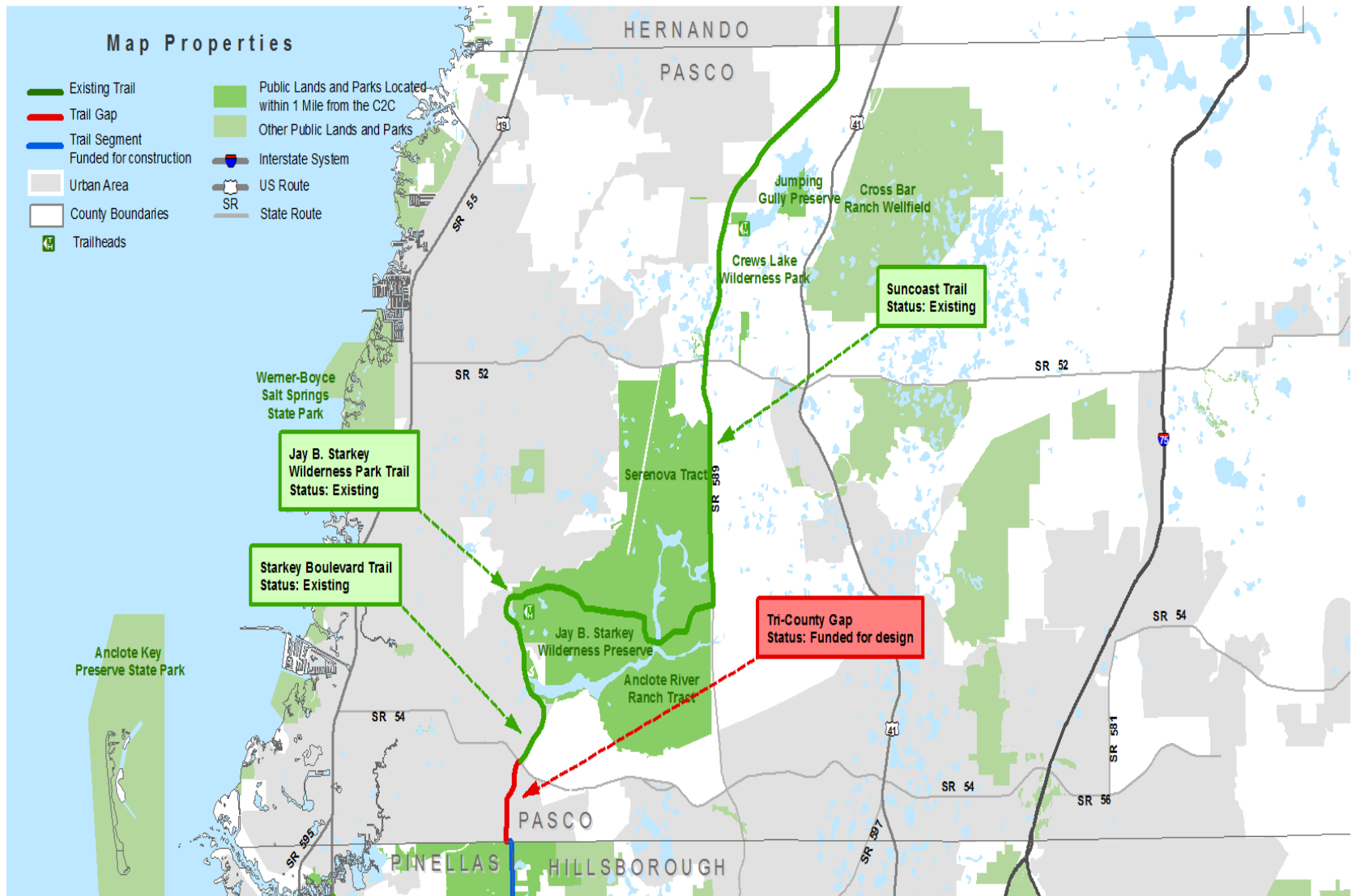
Trail amenities will not be provided by FDOT.

Local agencies must provide any amenities and coordinate with the FDOT, designers and contractors, through a Joint Participation Agreement.



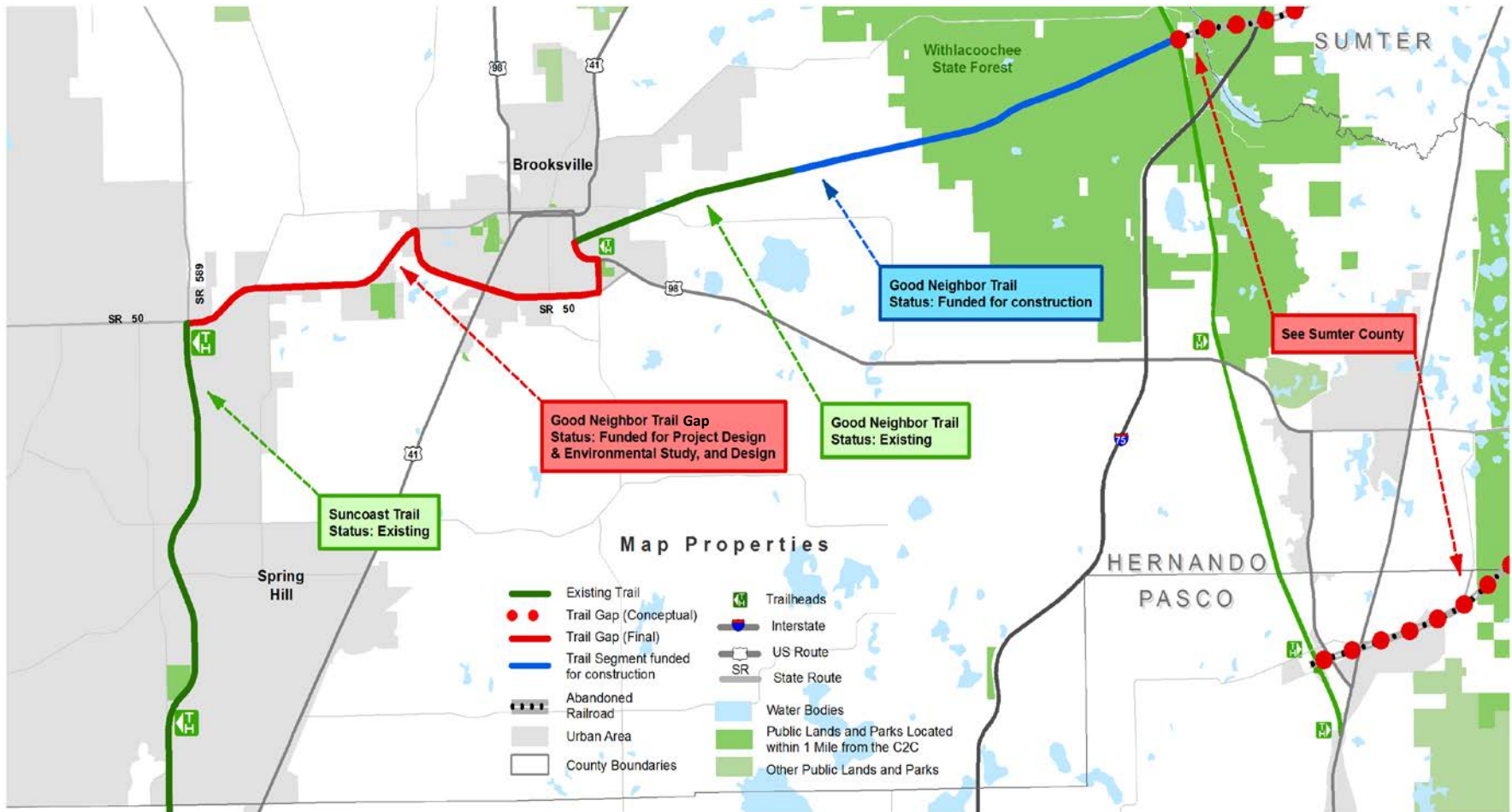


# Tri-County Trail



Good NEIGHBOR GAP

# Good Neighbor Trail



6 miles

PD&E to begin in 2015

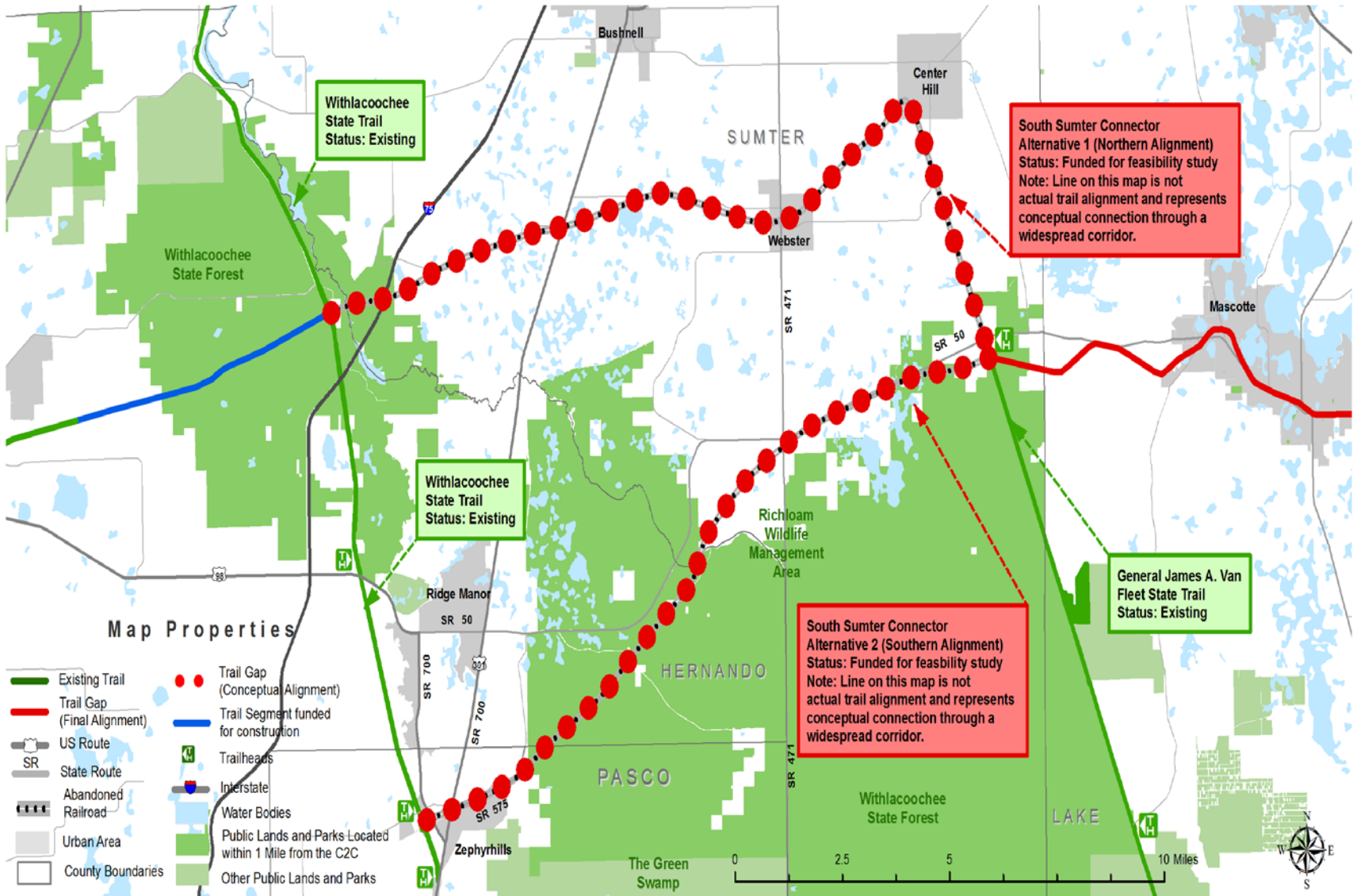
Estimated costs \$2,001,810 for the trail plus \$1.5- \$3 M for bike/ped  
overpass at US 41

Path to be built along south side of SR 50

# South Sumter Connector



# South Sumter Connector Alternatives



# *South Sumter Connector*

Part of the largest gap in the  
C2C Corridor

Funded this year for corridor  
analysis and PD&E study

Alternatives include potential  
alignment in the Withlacoochee  
State Forest

Proposed trail would connect  
the Good Neighbor Trail and  
the Withlacoochee State Trail  
east to the Van Fleet Trail

Alternatives could create  
connections to the  
Withlacoochee State Trail in  
Hernando County or Pasco  
County

# *South Sumter Connector*

Alternative 1 will examine a northern alignment that could connect the small municipalities of Webster and Center Hill

Alternative 2 will examine paralleling SR 50 or following the historic rail bed that parallels the SR 50 corridor through the Withlacoochee

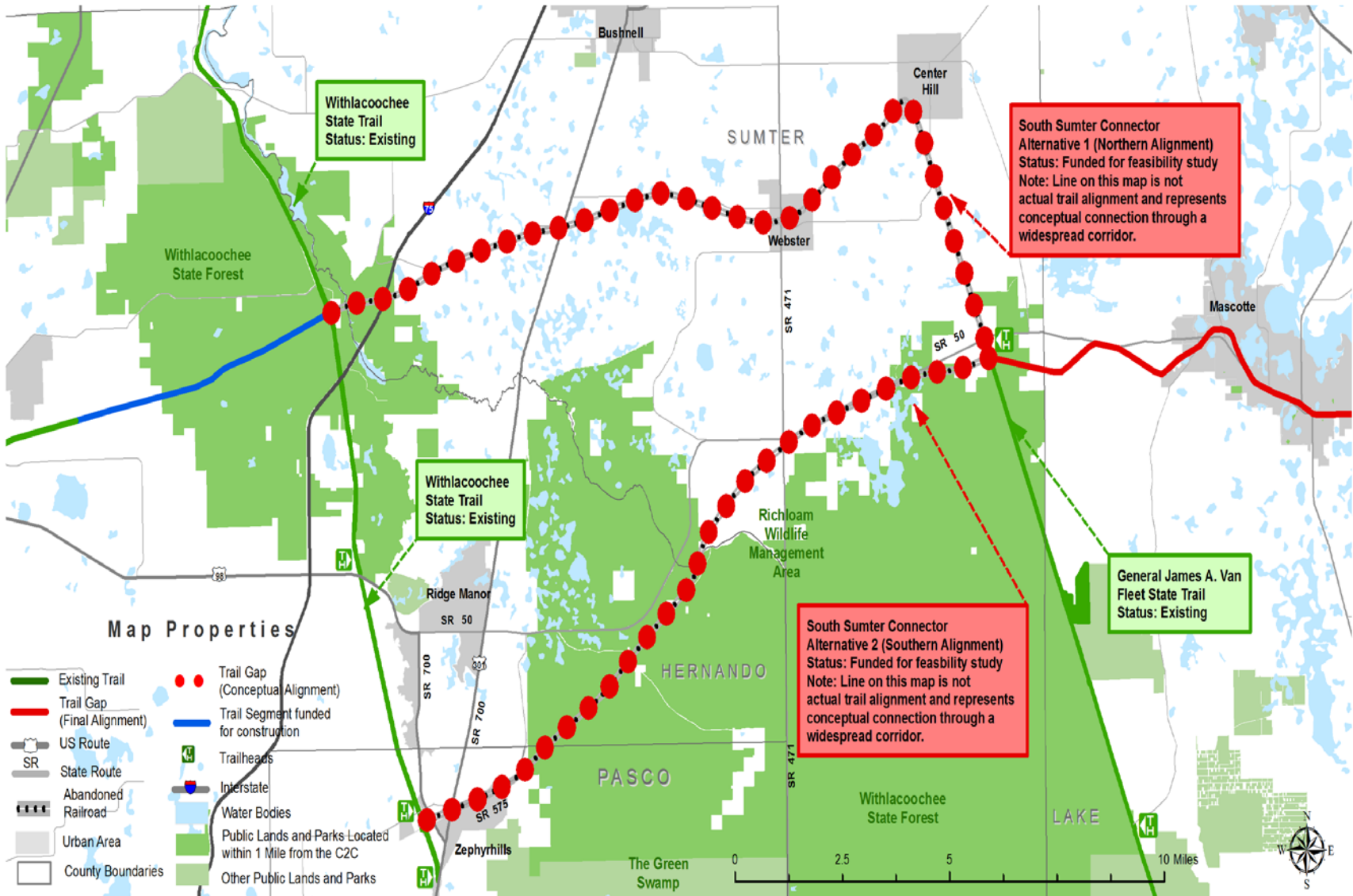




# *South Sumter Connector*



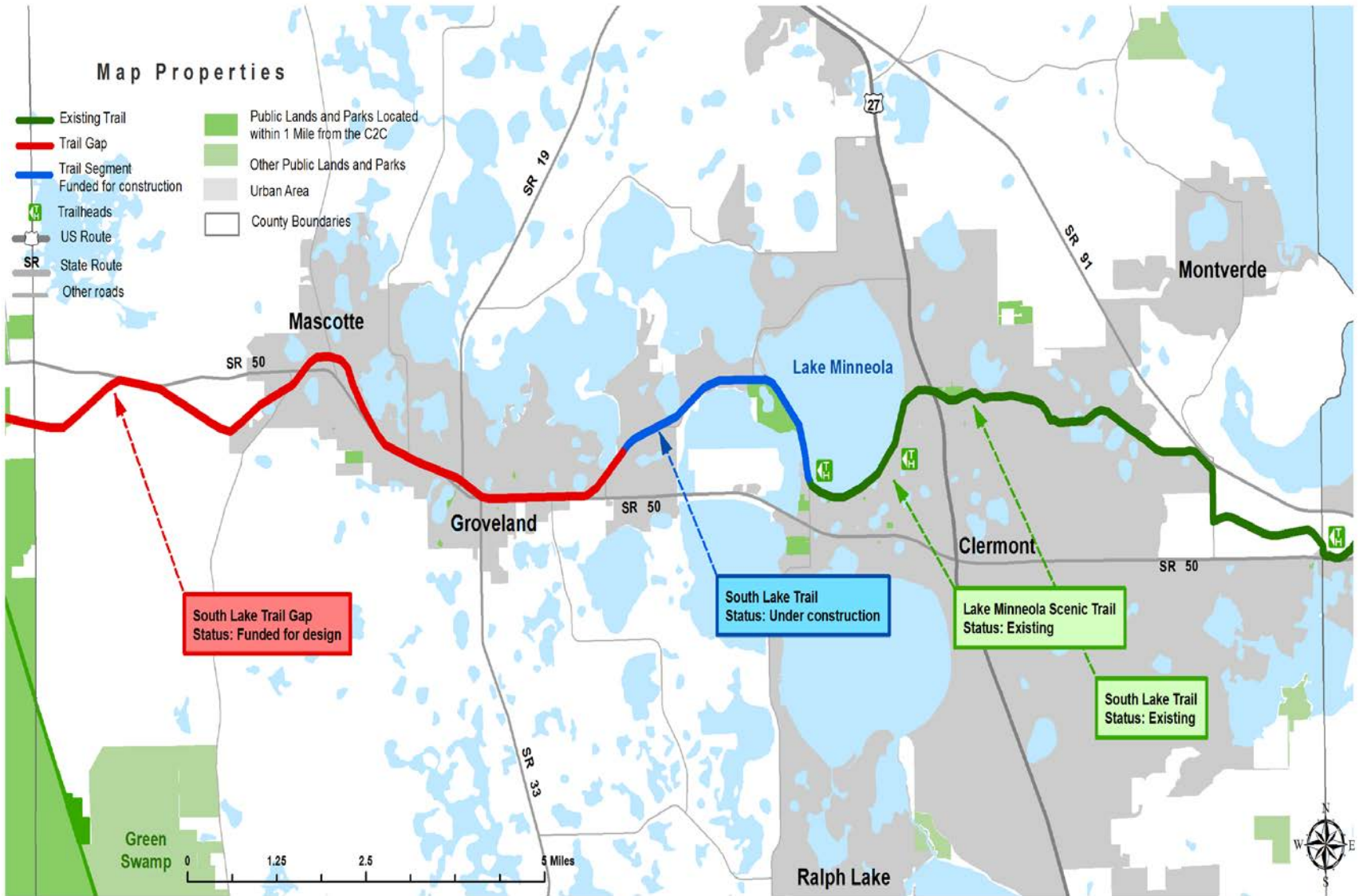
# South Sumter Connector Alternatives



# South Lake Trail / Minneola Scenic Trail



# South Lake Trail / Lake Minneola Scenic Trail



# *South Lake Trail / Lake Minneola Scenic Trail*

## West-to-East:

**Design funded this year  
from Van Fleet Trail east to  
Villa City Road  
(Mascotte/Groveland)**

**Trail to be part of Groveland  
SR 50 Realignment project  
from Villa City Road east to  
Brown Road, just east of SR  
33**

**ROW acquisition from  
Brown Road to the terminus  
of current construction**

**Construction from  
Groveland to Clermont to be  
complete 2015**

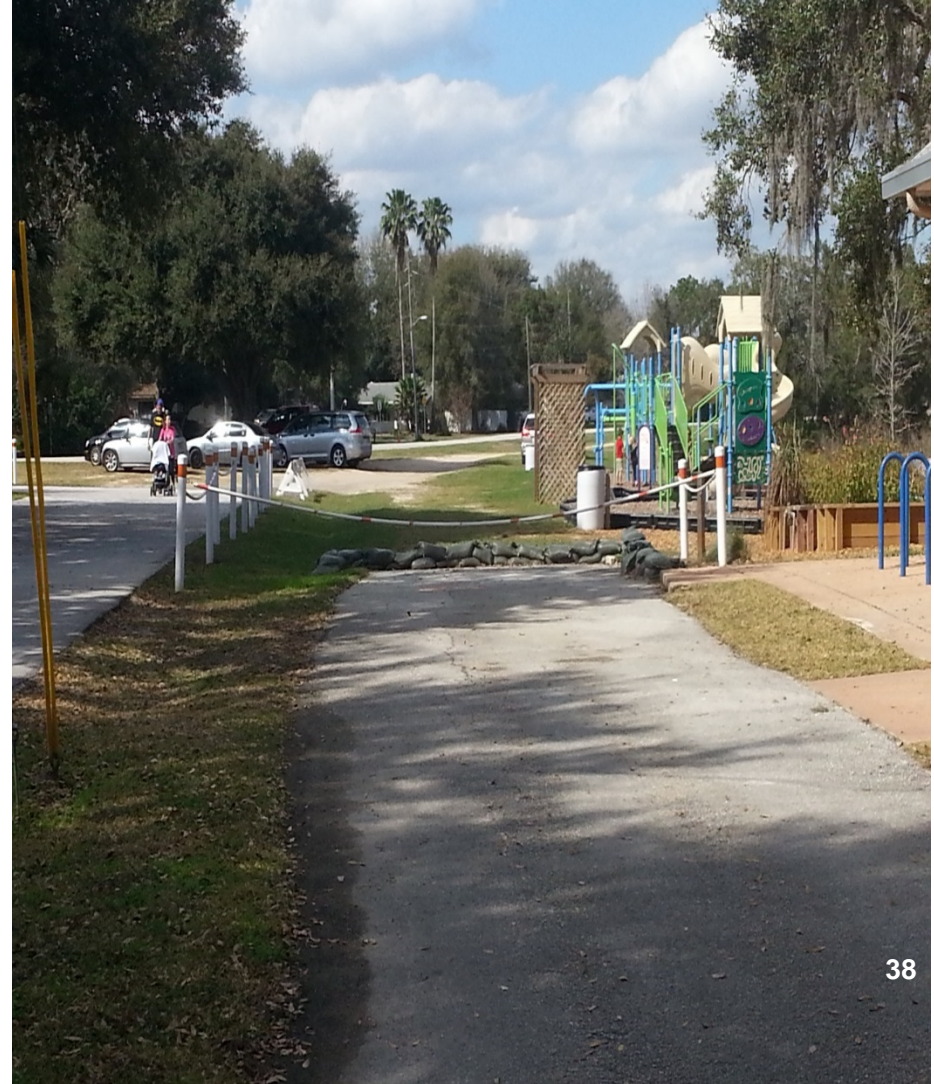
**South Lake trail exists from  
Lakefront Park in Clermont  
east to the Minneola Scenic  
Trail**

# *South Lake Trail / Lake Minneola Scenic Trail*

**From Minneola Scenic Trail  
then C2C continues east to  
the South Lake Trail  
designation**

**South Lake Trail east of  
Minneola transitions to the  
West Orange Trail**

**Lake County and cities now  
addressing maintenance of a  
decade-old trail**



# South Lake Trail



# *South Lake Trail / Minneola Scenic Trail*

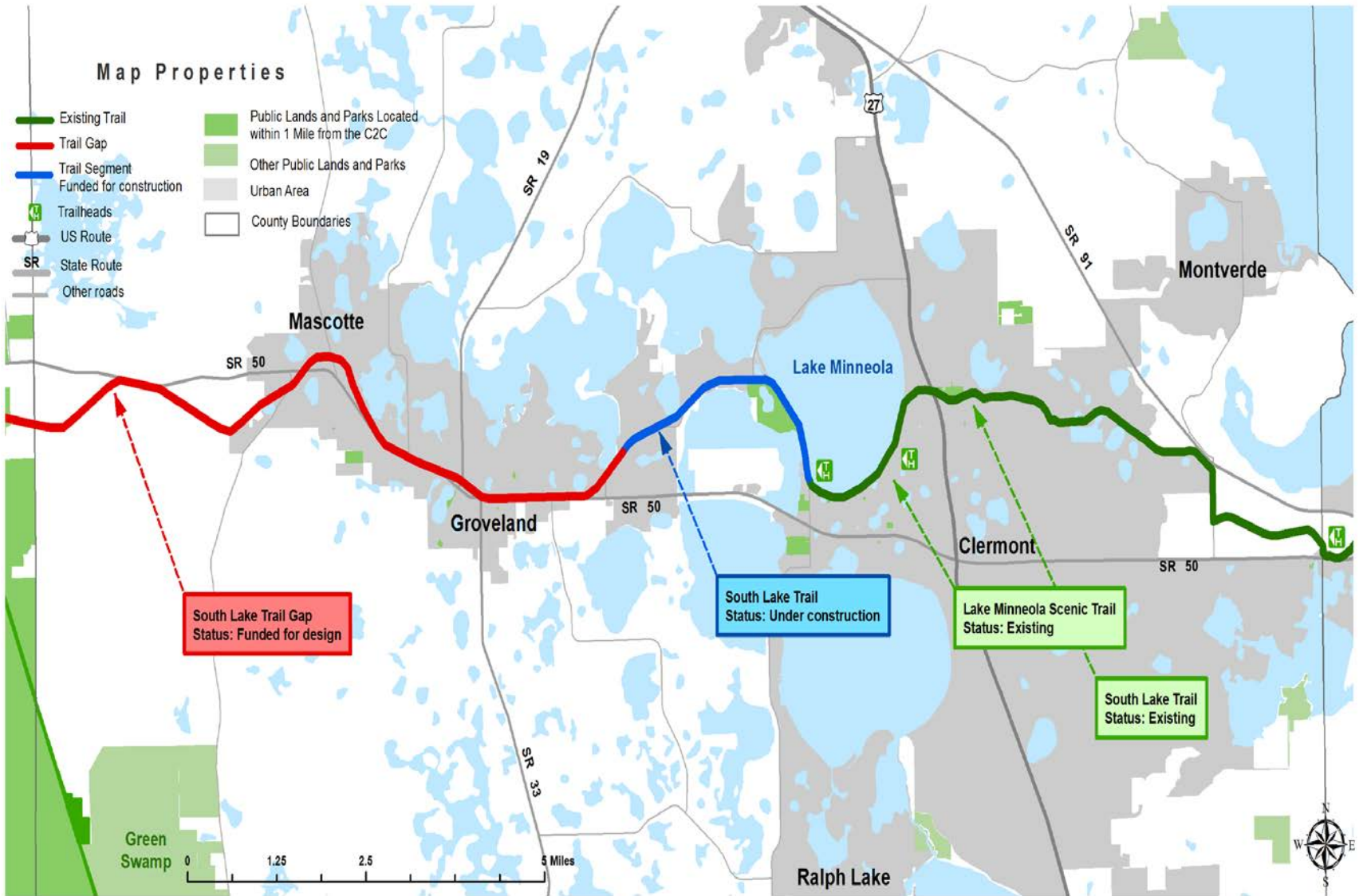




# *South Lake Trail / Minneola Scenic Trail*



# South Lake Trail / Lake Minneola Scenic Trail



C2C = CoC



# ORANGE GAP

# Clarcona-Ocoee Connector

1.6 miles

No phases yet completed

To be programmed for  
PD&E and Design  
(combined with Pine Hills  
Trail Phase III)

Path along Clarcona-Ocoee  
Road



# *Pine Hills Trail Phase III*

2.3 miles

No phases yet completed

To be programmed for PD&E  
and Design (combined with  
Clarcona-Ocoee Connector)

\$556,000

Path along utility corridor,  
Beggs Road and US 441



# Orange Gap



- 1 Approximately 15 miles of existing trail and 4.5 miles of gap
- 2 29 parks and conservation areas located within 1 mile from the Coast to Coast Connector's main route



# SEMINOLE GAP



# Rinehart Road Path

1.1 miles (combining 5 short gaps)

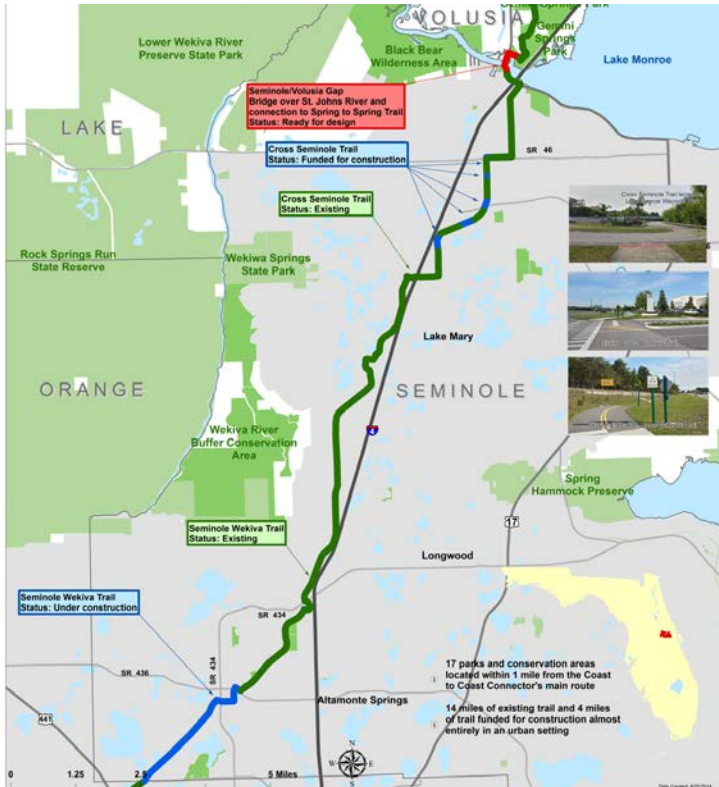
Right-of-way and Design  
complete

\$554,000 for construction

Path along east side of Rinehart  
Road and north side of SR 46



# Rinehart Road Path



Sumter

Lake

# COAST TO COAST CONNECTOR TRAILS IN VOLUSIA COUNTY

Coast to Coast Connector Summit

October 1, 2014



# Overview

In the River to Sea TPO planning area, the Coast to Coast Connector consists of the East Central Regional Rail Trail connecting Brevard and Volusia Counties (51 miles) and the Spring to Spring Trail connecting Volusia and Seminole Counties (15 miles).



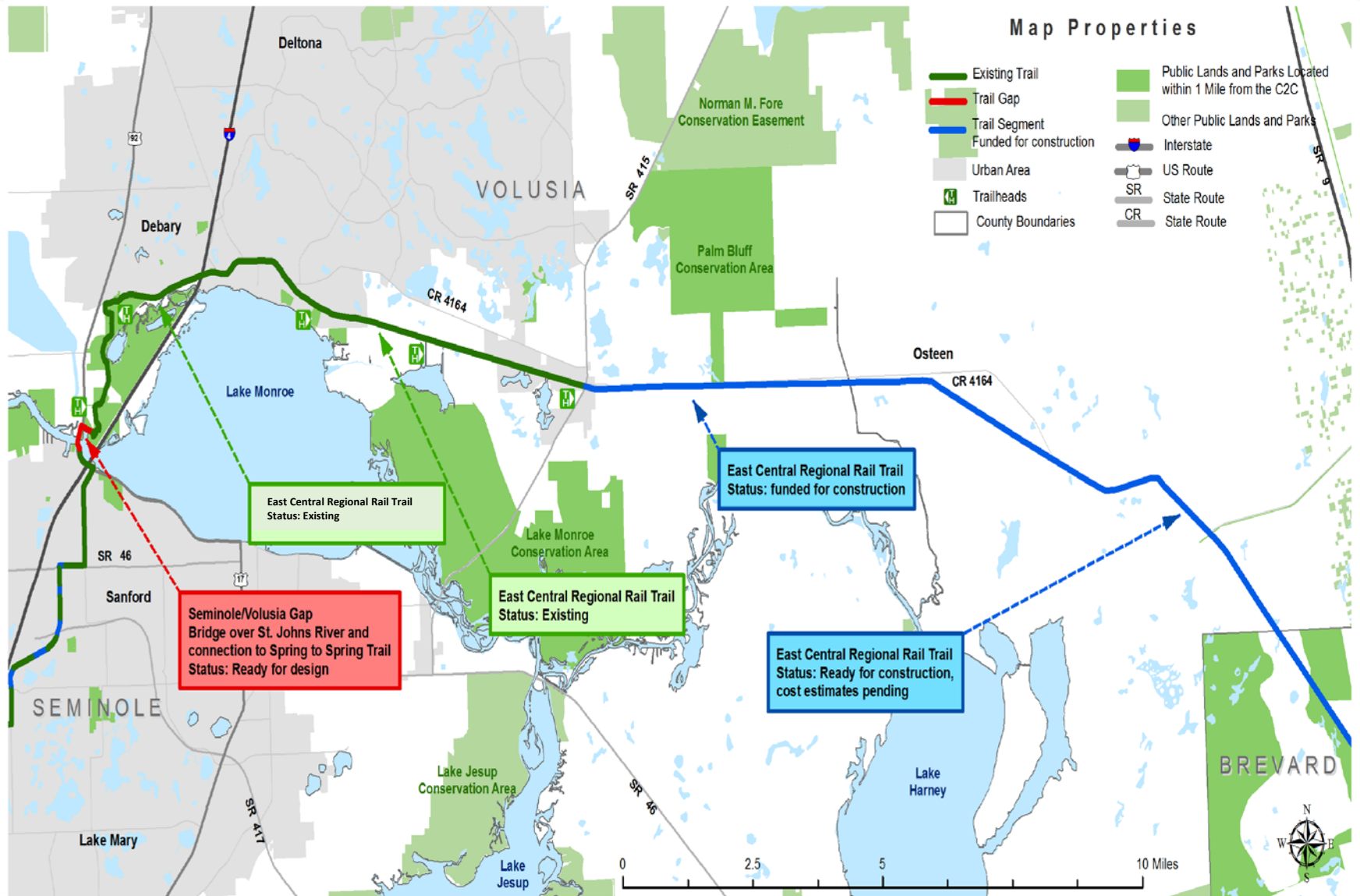
# *Existing Conditions*

## **What has been built and can be highlighted as a success?**

- Spring to Spring Trail
  - Lake Monroe Park to Green Springs Park (6.7 miles)
- East Central Regional Rail Trail
  - Green Springs Park to SR 415 (7.1 miles)



# Status of Coast to Coast Trails in Volusia County





# Projected Trail Alignment in Lake Monroe Park



# *Regional Connectivity*

## **What are the issues and opportunities for regional connectivity?**

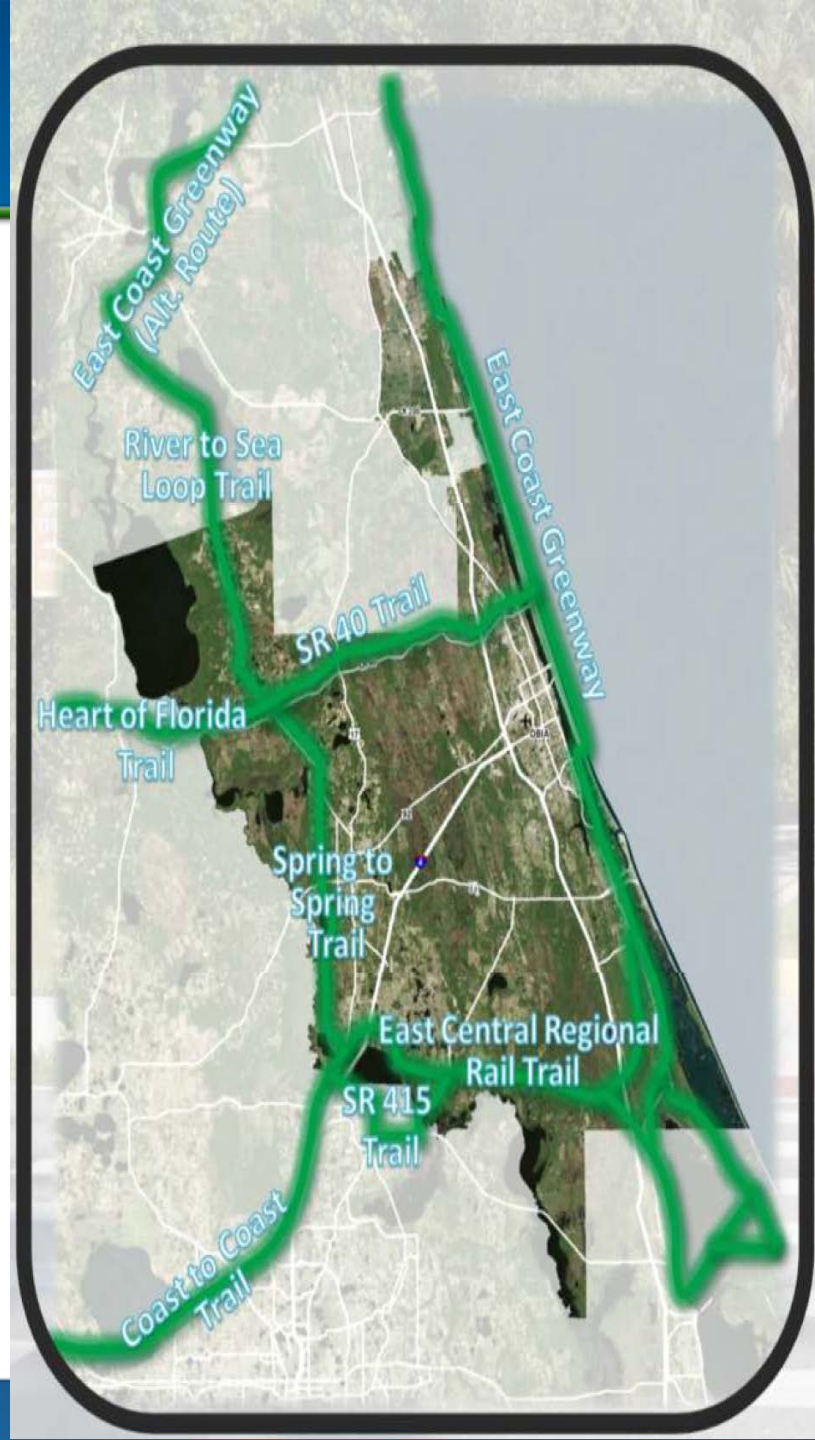
- Regional Trails Corridor Assessment
- Coast to Coast Trail Extension (Edgewater to New Smyrna Beach)
- SunRail Connection
- Public Awareness and Information
- Funding

# Regional Trails Corridor Assessment

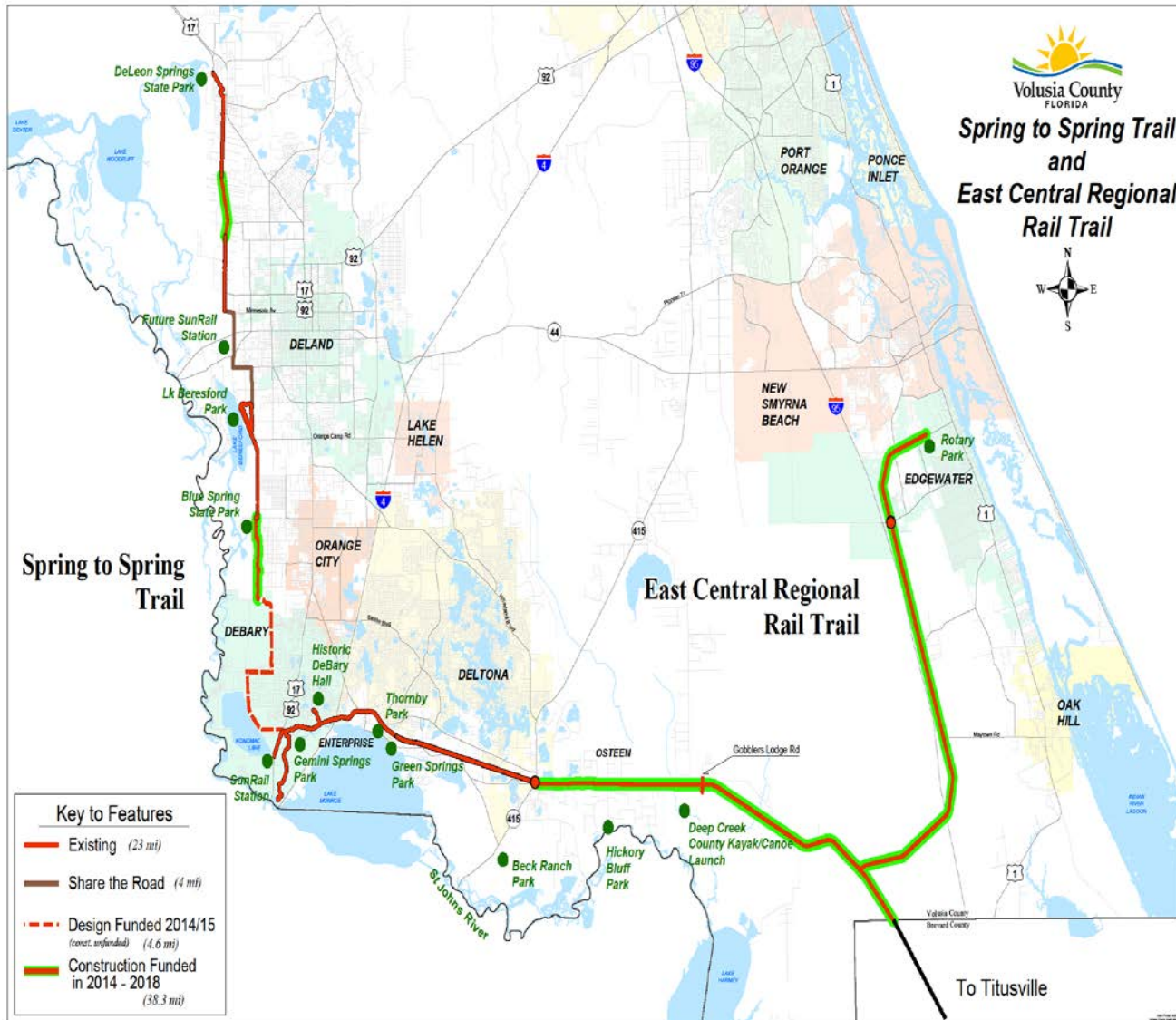
- Coast to Coast Trail
- East Coast Greenway
- Heart of Florida Trail
- St. Johns River to Sea Loop

## Project Purpose

- Complete the regional trails network in the R2CTPO planning area
- Advance the Florida Greenways and Trails System Plan
- Finalize alignments and connections
- Develop conceptual plans and cost estimates for all gap segments to compete for funding



# Coast to Coast Trail Extension



# *SunRail Connection*

Utility Easement  
between SunRail Station  
and  
Spring to Spring Trail



# Public Awareness and Information



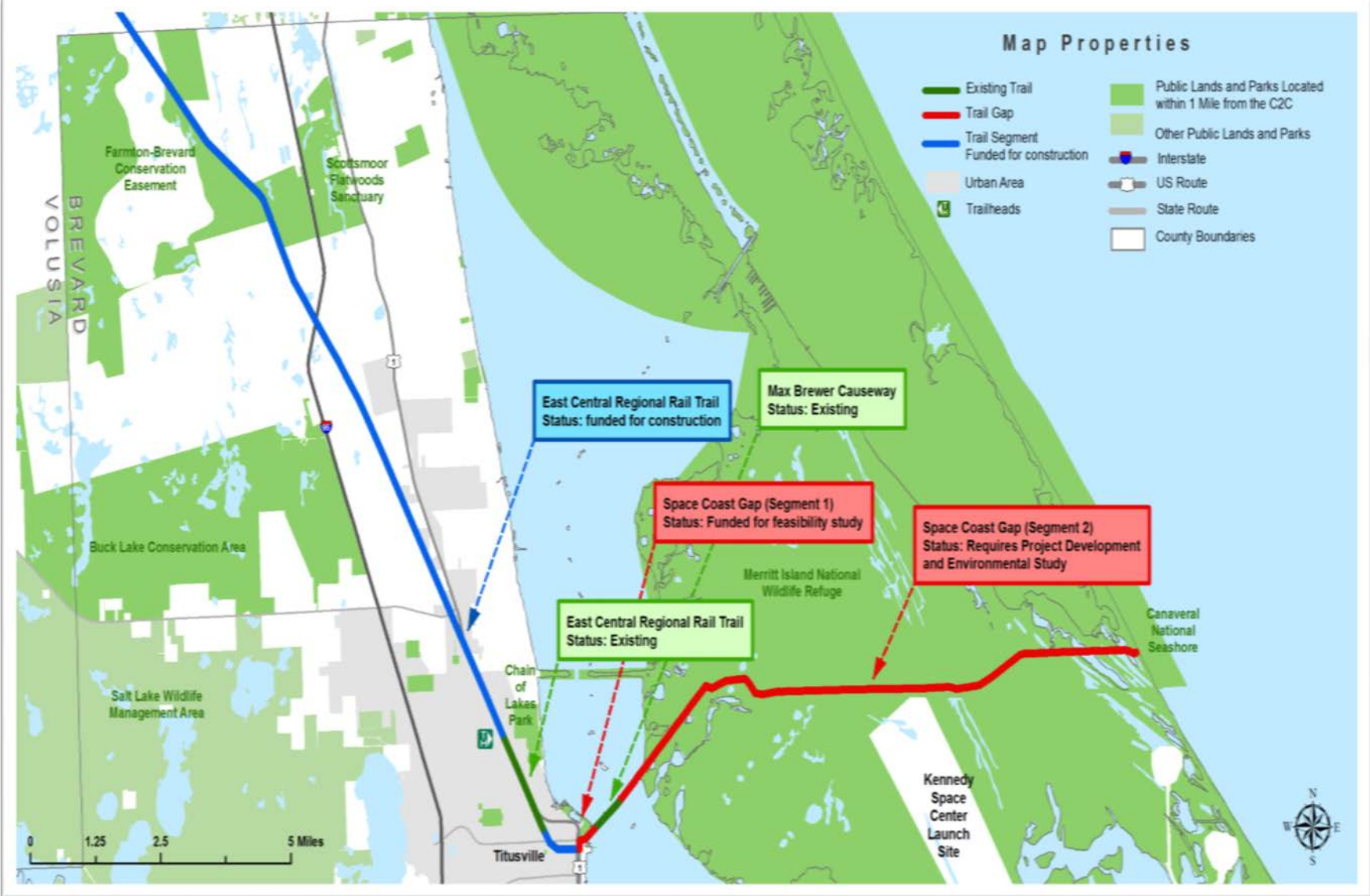
## Volusia County Bicycling Map <sup>for the</sup> Experienced Cyclist 2014



Photograph of the Omond Scenic Loop and Trail courtesy of Bike Florida, Inc.



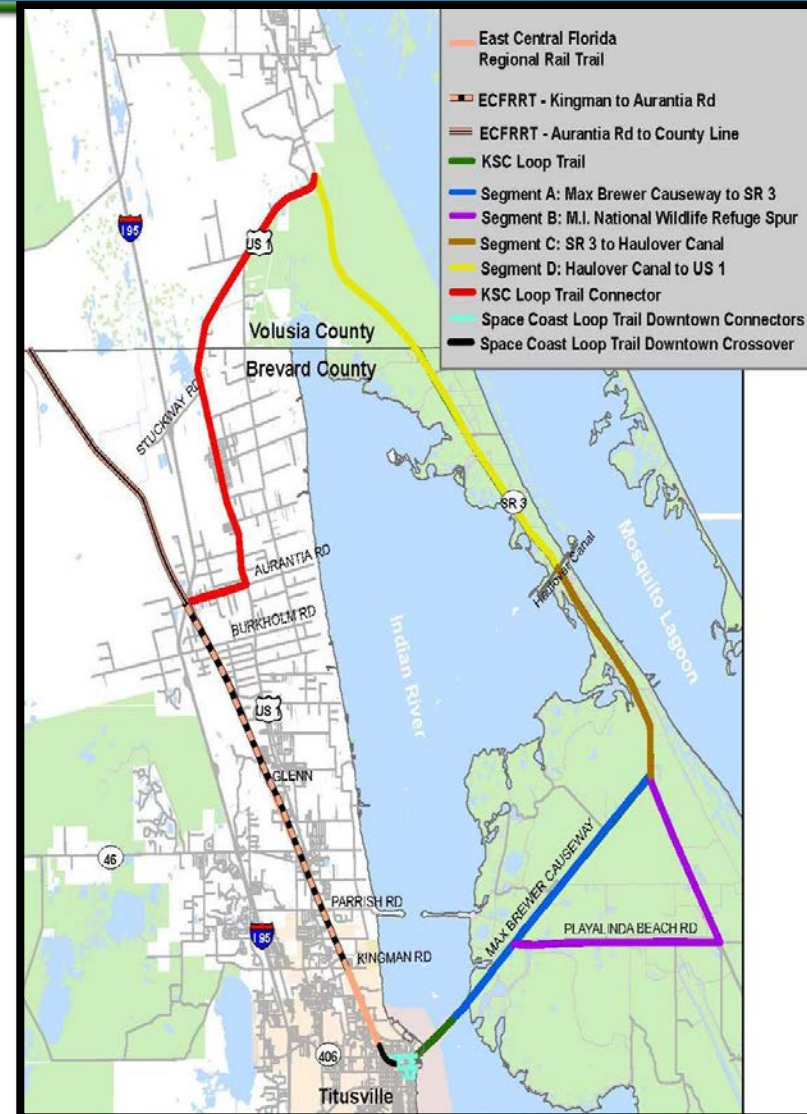
# Coast to Coast Connector - Brevard County



# Coast to Coast Connector - Brevard County

## SPACE COAST LOOP TRAIL – 55 MILES

- Coast to Coast Connector
- St. Johns River to Sea Loop
- East Coast Greenway
- U.S. Department of Interior  
America's Great Outdoors
- Indian River National Scenic Byway
- America's Transportation Awards Top 10  
Transportation Project 2010
- Merritt Island National Wildlife Refuge
- Canaveral National Seashore
- NASA/Kennedy Space Center





# East Central Florida Regional Rail Trail

## BREVARD COUNTY RURAL/SUBURBAN SEGMENT

**LENGTH: 12.8 miles**

**PHASE: FDOT Design/Build  
Funded FY 2014/15  
Design 2015  
Construction 2016**

**COST: \$14.3M**

**State and Federal funding**



# East Central Florida Regional Rail Trail – Rural Segment

## RURAL SEGMENT

**LENGTH:** 5.5 miles

### FEATURES:

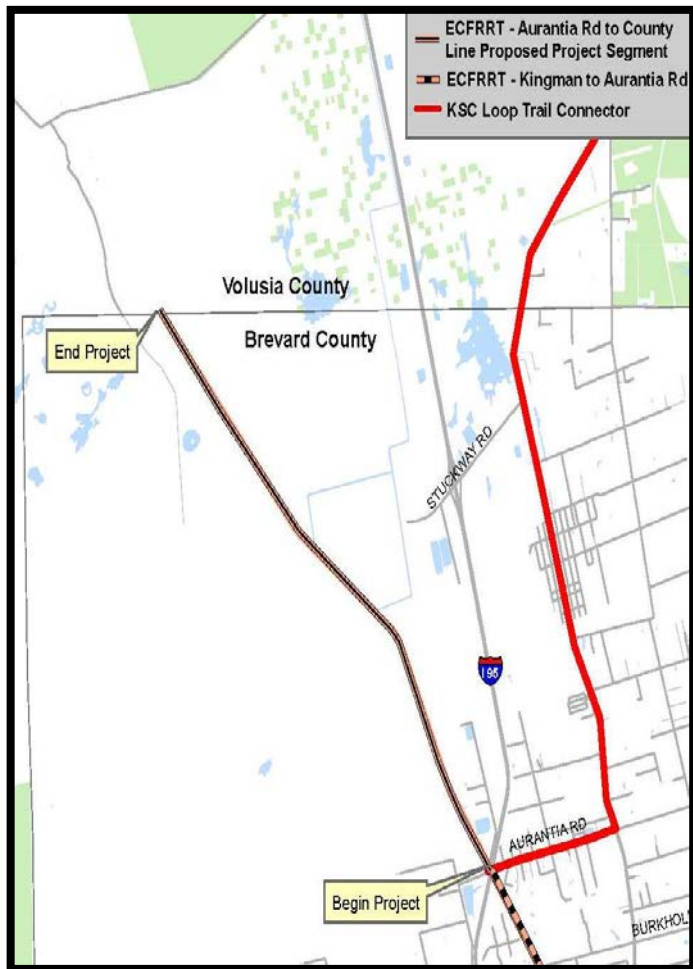
Rural/wilderness trail  
Wetlands/ecosystems  
Equestrian/trailhead

### CHALLENGES:

Emergency response  
Bridges/mitigation  
Maintenance

**BUDGET:** \$7,356,000

C2C State \$



# East Central Florida Regional Rail Trail – Suburban Segment



## SUBURBAN SEGMENT

**LENGTH:** 7.3 miles

### FEATURES:

Neighborhood trail  
Parallel but off road

### CHALLENGES:

Road/driveway crossings  
Signage

**BUDGET:** \$6,946,602

FDOT work program/Federal \$



# East Central Florida Regional Rail Trail – Titusville Segment

## DRAA PARK SEGMENT

LENGTH: 1.4 miles

PHASE: COMPLETE

FEATURES:  
Neighborhood trail connected to future city park with full service trailhead



NO. 1	DATE	BY
2	DATE	BY
3	DATE	BY
4	DATE	BY
5	DATE	BY
6	DATE	BY
7	DATE	BY
8	DATE	BY
9	DATE	BY
10	DATE	BY

**ECT**  
Environmental Consulting & Technology, Inc.  
201 East First Ave., New Smyrna Beach, FL 32909  
(386) 427-0884 fax: (386) 427-0885

DRAA FIELD  
STORMWATER PARK

CONCEPTUAL  
SITE PLAN

PROJECT NO.	150346
DATE	JANUARY 2012
SHEET NO.	2

# East Central Florida Regional Rail Trail – Titusville Segment

## TITUSVILLE CROSSOVER SEGMENT

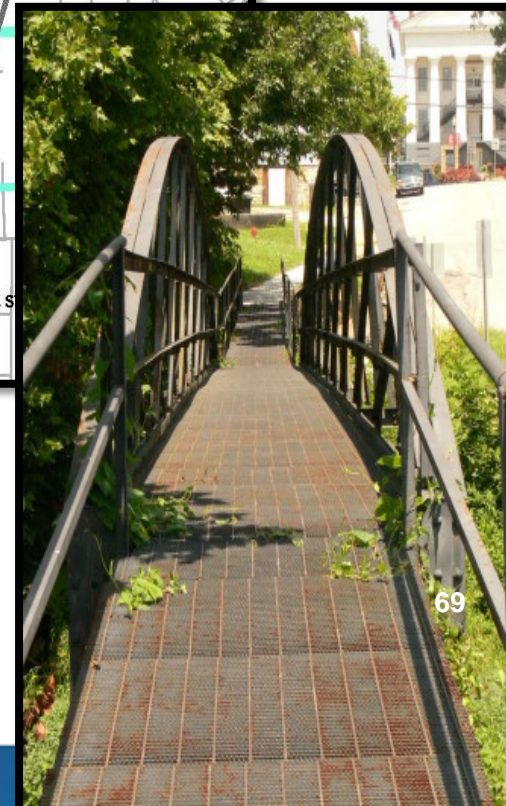
**LENGTH:** 0.6 miles

**PHASE:** Titusville Design/Build  
Funded FY 2014/15  
Design 2015  
Construction 2016

**FEATURES:** Pedestrian bridge  
across SR 406/Garden  
Street

**BUDGET:** \$3,631,000

FDOT work program/Federal \$



# Space Coast Gap – Segment 1

## DOWNTOWN CONNECTOR

LENGTH: 1.9 miles

PHASE: FDOT PD&E

Funded FY 2014/15

BUDGET: \$100,000

C2C State \$

FEATURES: Connections to downtown, two regional parks, and future train station

ISSUES: Right of way constraints



VIEW OF PROPOSED TITUSVILLE STATION

# Space Coast Loop Trail – Max Brewer Bridge

## MAX BREWER BRIDGE

**PHASE:** COMPLETE

**FEATURES:** Connections to two regional parks  
Bike/ped facilities on two sides



# Space Coast Gap – Segment 2

## KENNEDY SPACE CENTER GAP

**PHASE:** Feasibility Study nearing completion

**Next phase – PD&E** following federal NEPA guidelines

**BUDGET REQUEST:** \$450,000

Submitting for 2016-2020 work program

**FEATURES:** Proposed off road route  
and rail with trail through

- Merritt Island National Wildlife Refuge,
- Canaveral National Seashore, and
- Kennedy Space Center

**ISSUES:** Federal funding





# *Coast to Coast Connector – Canaveral National Seashore*



***Discussion Topic 1: Regional  
System vs. Local Trails –  
Implementation***

# *What makes a great regional trail?*



# *Vital Questions*

---

- What does the user need and want to ensure a seamless great experience?
- How does that impact local implementation?
- What are the keys to ensuring a balance that focuses on creating a great guest experience?

# What makes a great regional trail?

## *Planning and Design*

- Design and planning of trail corridors, facilities and amenities
- Determine signage plan
- Determine traffic control plan
- Secure acquisition funding for trails and support facilities
- Garner support from public and private partners

## *Trail Management*

- Maintain trail corridors, facilities and amenities
- Implement signage plan
- Ensure trail user safety
- Coordinate with public and private partners

## *Economic Development*

- Address Best Practices for potential development bordering trails
- Coordinate with other trails programs
- Cultivate relationships with local, state and federal partners
- Market the Trail to non-Florida residents and non-trail users

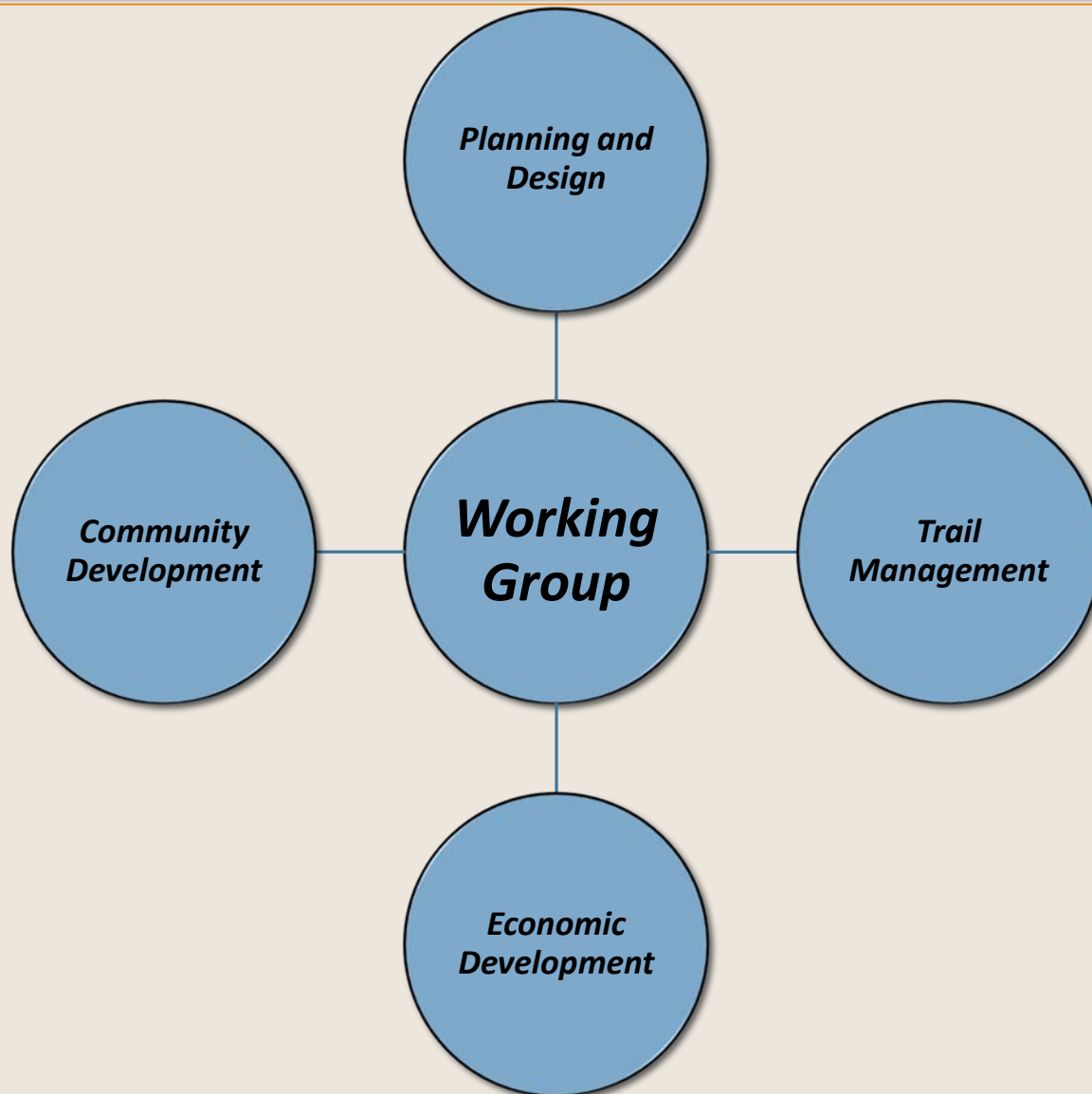
## *Community Development*

- What impact will the Connector have on the regions health?
- How is the trail used to promote a healthy lifestyle?
- How does the trail develop a sense of community, or place?

---

# ***Discussion Topic 2: Creating a Regional Leadership Structure***

# Coast to Coast Connector Working Group



***How do we organize ourselves?***



# Working Group Tasks

## Planning and Design

*Design and planning of trail corridors, facilities and amenities*

*Determine signage plan*

*Determine traffic control plan*

*Secure acquisition funding for trails and support facilities*

*Garner support from public and private partners*

## Trail Management

*Maintain trail corridors, facilities and amenities*

*Implement signage plan*

*Ensure trail user safety*

*Coordinate with public and private partners*

## Economic Development

*Address Best Practices for potential development bordering trails*

*Coordinate with other trails programs*

*Cultivate relationships with local, state and federal partners*

*Market the Trail to non-Florida residents and non-trail users*

## Community Development

*Garner Community Support for Trail*

*Ensure trail is used for community benefit*

*Engage volunteers to assist in management*

# Working Groups

## Planning and Design

*FL Department of Transportation:  
Statewide Office*

*FL Department of Transportation:  
District Offices 5 & 7*

*FL Department of Environmental Protection:  
Office of Greenways & Trails (& FGTF)*

*City, County, or Metropolitan Planning Organizations*

*Federal Agencies*

## Trail Management

*Local, State, and Federal Trail Managers*

*Local, State and Federal law enforcement*

## Economic Development

*Tourism Development Bureaus*

*Visit Florida*

*Local, Regional and State Government*

## Community Development

*Local Depts. Of Health*

*Community Groups*

*Local Businesses*

# ***Wrap Up***