

A Basic Guide: Transportation Planning



Space Coast Transportation
Planning Organization

Brevard County's Transportation System

What is Transportation Planning?

Transportation planning is about identifying opportunities to improve mobility for the people and businesses who use transportation systems; it is about providing accessibility for everyone in your community.



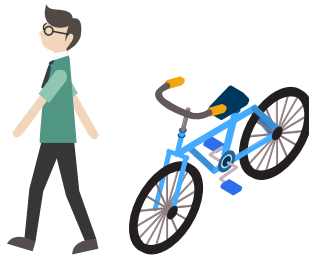
What is a Transportation System?

A transportation system is made up of different modes of transportation that use the system to move people and goods from one place to another.

Brevard is multimodal in the sense that it has more transportation resources than any area its size in the United States.



Car



Walk/Bicycle



Transit



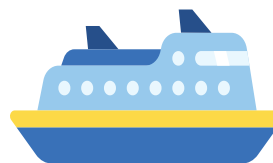
Air



Freight



Space



Sea



Rail



Economy 101

Brevard's economy is largely built on and around these transportation assets.

WHO WE ARE

The Space Coast Transportation Planning Organization (SCTPO) continually monitors the conditions of Brevard’s transportation system's modes and carries out planning at the regional level.



We work with our citizens, local governments, transportation agencies, and elected officials, to help shape our future system and address the transportation needs of Brevard County.



We also facilitate robust bicycle, pedestrian, trails, and traffic safety education programs.

A TPO is created to look at the big picture of transportation planning – helping to assist in the communication and coordination among the different modes and municipalities.

WHAT WE DO



The SCTPO is governed by federal and state law. Any urbanized area with a population of more than 50,000 citizens **must** have a TPO to spend federal transportation funds.



A board made up of local elected officials sets policy for the SCTPO and adopts long-range plans and short-range programs of future transportation improvements.



The general public, as well as various stakeholder groups, such as nonprofit, community-based, and environmental organizations, provide input that informs the policies, plans, and overall program direction that the SCTPO follows.

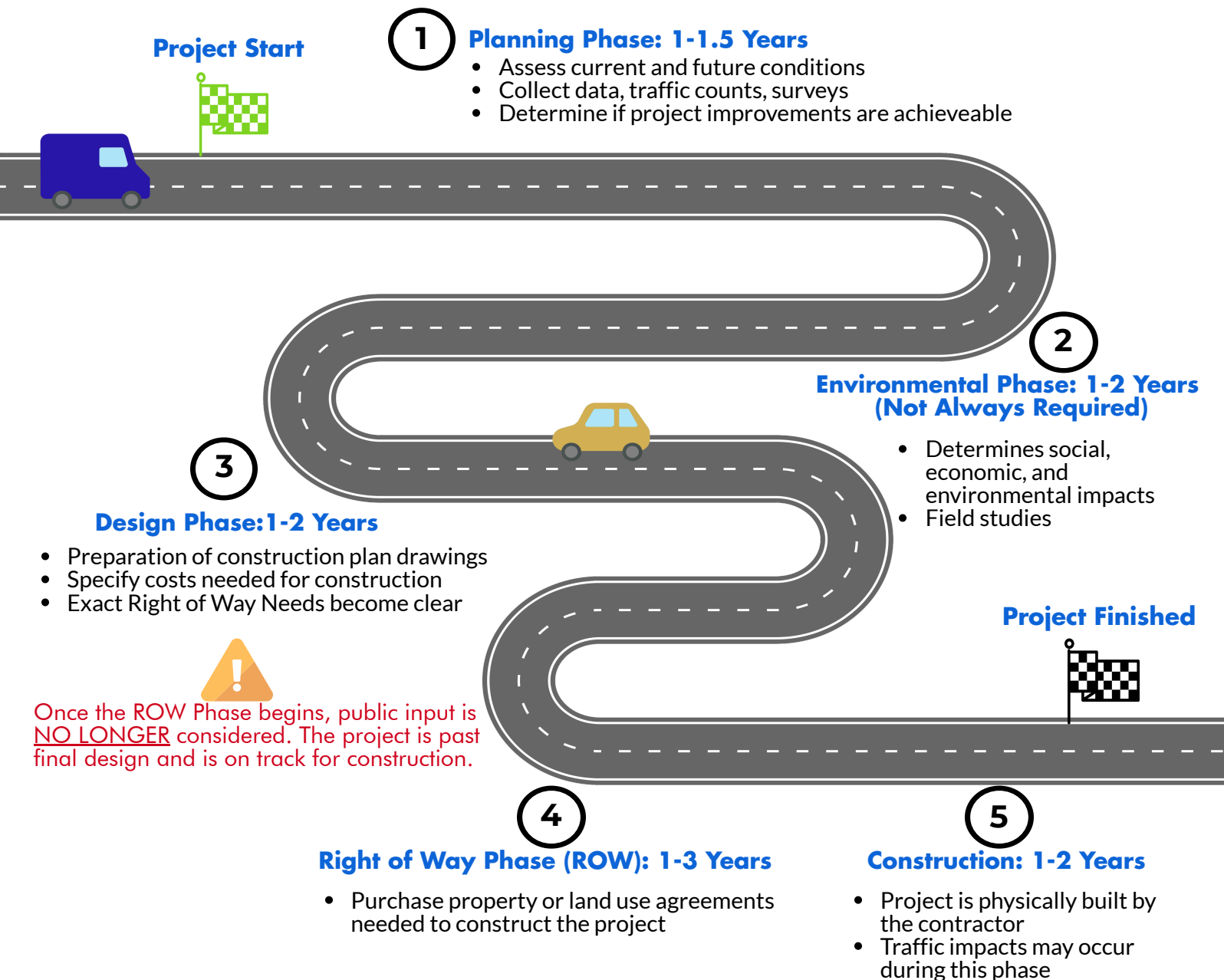
the
**SPACE COAST
TRANSPORTATION
PLANNING ORGANIZATION**
*coordinates the planning processes
within Brevard County
which includes:*

- 1 COUNTY:**
Brevard County Board of
County Commissioners
- 16 CITIES + TOWNS:**

Cape Canaveral	Melbourne Beach
Cocoa	Melbourne Village
Cocoa Beach	Palm Bay
Grant-Valkaria	Palm Shores
Indianlantic	Rockledge
Indian Harbour Beach	Satellite Beach
Malabar	Titusville
Melbourne	West Melbourne
- 2 AIRPORTS:**
Melbourne International Airport
Space Coast Regional Airport
- 1 SEAPORT:**
Port Canaveral
- 1 SPACEPORT:**
Cape Canaveral Spaceport (Kennedy
Space Center and Cape Canaveral Air
Force Station)

PHASES OF A ROADWAY PROJECT

These are the major phases of the road building process. Many of the tasks included within each phase occur concurrently. Each project's unique circumstances, requirements, risks, and complexities tailor the project development process to the individual project.



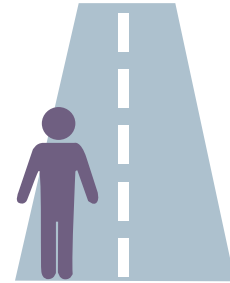
Take-Aways

- It can take years until a project is completed.
- All phases of roadway projects are dependent on available funding sources.
- Construction is inconvenient, but only in the short term.
- Public comment is solicited and welcome at many points throughout the first three phases.
- It is best to become involved as early as possible in the decision-making process.




WHO CAN ANSWER MY QUESTIONS?

Have questions about a road project in your area? Knowing who to contact is one of the key pieces of information you'll need in order to get answers to your concerns or questions.


Every road is unique, not all roads are maintained and operated by the same agency. Learning what agency is responsible for the road where the project is located is essential in getting the information you need.



There are four types of agencies who maintain and own the roads. Sometimes more than one agency is responsible for the same road.

-  **Local Roads:** Typically operated and maintained by cities
Examples - Florida Avenue (City of Cocoa), Hickory Street (City of Melbourne)
-  **County Roads:** Typically operated and maintained by Brevard County Public Works
Examples - Grissom Parkway (Titusville), Wickham Road (Melbourne)
-  **State Roads** : Typically operated and maintained by the Florida Department of Transportation
Examples - SR 520, SR 524, SR A1A, US 1, I-95



 **Remember:** Every road is unique. Many roads are maintained by multiple agencies. Check with your city office first, if you have a question about a roadway project.



Your Role in Transportation Planning

Public involvement and participation are **vital** to the transportation planning process. Community members often have unique and insightful perspectives on their transportation systems, and those perspectives may be very different from transportation officials. That is why it is so important that you stay involved.



Share Your Input

- Attend public hearings and open houses to learn more about projects in your neighborhood.
- Attend meetings of local and regional transportation boards.
- Volunteer to serve on a focus group or advisory committee.
- Add your e-mail address, to the SCTPO's mailing list to receive newsletters and updates.
- Ask a SCTPO staff member to attend a meeting of your community organization, such as a Rotary Club, Neighborhood Watch, Chamber or HOA meeting, to explain transportation planning efforts in your area to you and your friends.

Stay Connected

Stay up to date on the latest transportation planning news, projects, and initiatives by following us on our social media outlets or by visiting our website. Connect with us today!



@SCTPO



@SpaceCoastTPO



Space Coast TPO



www.sctpo.com

Glossary of Common Transportation Planning Terms

- **Access:** The ability to reach or connect to a roadway.
- **Accessibility:** The extent to which facilities are barrier free and usable by disabled persons, including wheelchair users.
- **Alternative Modes:** Any mode of transportation other than a single occupant vehicle.
- **Autonomous Vehicle:** Operates in isolation from other vehicles, using internal sensors.
- **Average Daily Traffic (ADT):** The average number of vehicles passing a specified point during a 24-hour period.
- **Bicycle Facilities:** Any travel corridor designed to accommodate non-motorized traffic, including bike and pedestrian paths and bike lanes on roadways.
- **Bike Lane:** A portion of a roadway which has been designated by striping, signing, and pavement markings for the preferential or exclusive use of bicyclists.
- **Capacity:** The volume of vehicles the road was designed to carry in a unit of time, such as an hour; can also be applied to transit or bicycle/ped paths.
- **Complete Street:** Streets for everyone that are designed and operated to enable safe access for all users, including pedestrians, bicyclists, motorists and transit riders of all ages and abilities.
- **Congestion:** "Recurrent" congestion is defined as a condition lasting for 15 minutes or longer where travel demand exceeds design capacity.
- **Connected Vehicle:** Communicates with nearby vehicles and infrastructure.
- **Corridor:** A geographic area that is defined by major roads and rail facilities, and major flows of travel. Commonly used in place of the term "road."
- **Divided Highway:** A multi-lane facility with a positive barrier median, or a median that is 4 feet or wider.
- **Intermodal:** Connections between modes.

- **Land Use:** The purpose for which land or the structures on the land are being utilized; for example: commercial, residential, retail.
- **Mobility:** The ability to travel along a highway facility.
- **Multimodal:** The availability of multiple transportation options, especially within a system or corridor.
- **Peak Hour/Period:** That one-hour or period during which the maximum amount of travel occurs.
- **Rectangular Rapid Flashing Beacons (RRFB):** A pedestrian-activated ("push button") beacon system located at the roadside and acting as a supplement to pedestrian warning signs at unsignalized intersections or mid-block crosswalks.
- **Right of Way (ROW):** Denotes land, property or interest therein, usually in a strip, acquired for or devoted to transportation purposes.
- **Roadway:** Denotes a public way intended for vehicular use; includes sidewalks and right of way.
- **Shared/Multi-Use Path:** A path physically separated from motorized vehicular traffic by an open space or barrier and either within or independent of the roadway right-of-way.
- **Sharrow:** A shared-lane marking indicating where a cyclist has the right to ride in the roadway.
- **Shoulder:** The portion of the roadway contiguous with the traveled way for accommodation of stopped vehicles, for emergency use and for lateral support of sub-base, base and surface courses.
- **Transit:** Urban passenger transportation service provided to the public along established routes with fixed or variable schedules at published fares.
- **Urbanized Area:** Area that contains a city with a population of 50,000 or more.
- **Volume:** The number of vehicles that pass through a section of road per unit time at any selected period.

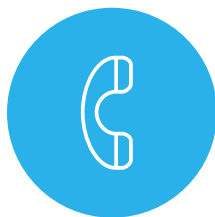


Contact Us

Have a question or concern? Feel free to contact us via email, phone, or visit our office. To learn more about the SCTPO visit www.spacecoasttpo.com.



tpostaff@spacecoasttpo.com



(321) 690-6890



2725 Judge Fran Jamieson Way
Building B
Melbourne FL 32940



Office Hours
Open Monday - Friday
8:00 a.m. - 4:30 p.m.
Closed on public holidays.