



2016 STATE OF THE SYSTEM

SAFETY STATISTICS

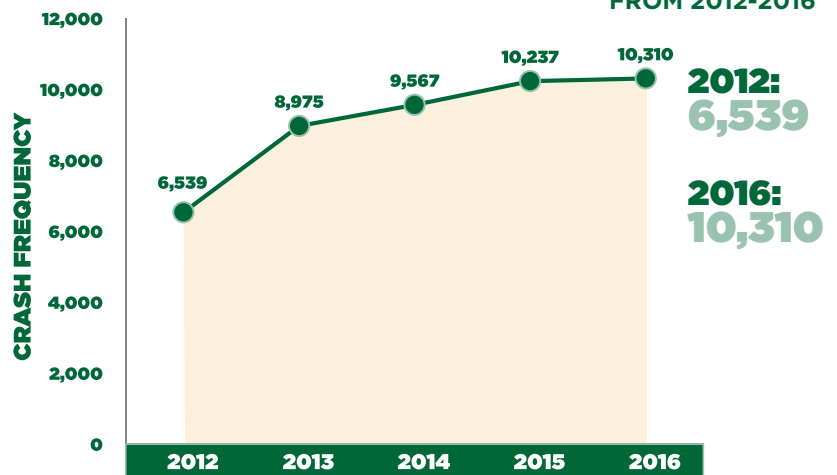


ABOUT

The Space Coast Transportation Planning Organization (TPO) annually evaluates the state of Brevard's transportation system. The results are summarized in the State of the System (SOS) report. The SOS considers usage and performance trends of various transportation modes -- highways, transit, seaport, airport and space. This summary highlights a few of the safety metrics reviewed as part of the SOS safety analysis: number of Countywide crashes, intersection and corridor crashes, fatal crashes, vulnerable road user crashes, lane departure crashes, impaired driving crashes, and distracted driving crashes.

COUNTYWIDE NUMBER OF CRASHES

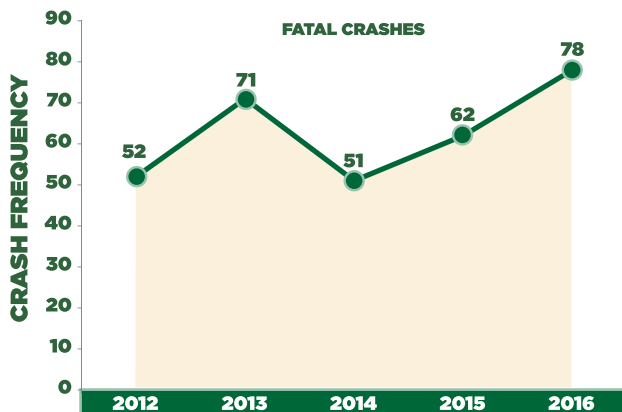
58%
INCREASE
FROM 2012-2016



FATAL CRASHES



20.5%
INCREASE
FROM 2015-2016

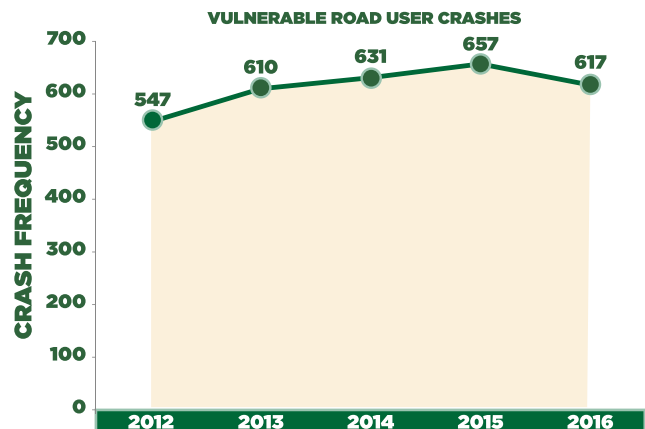


VULNERABLE ROAD USERS



PEDESTRIAN BICYCLE MOTORCYCLE

6.5%
DECREASE
FROM 2015-2016



INTERSECTION CRASHES

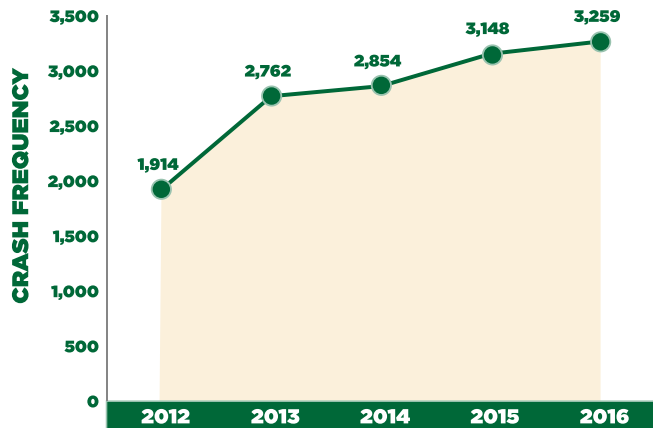


2012: 1,914
2016: 3,259



70%

INCREASE
FROM 2012-2016



CORRIDOR CRASHES

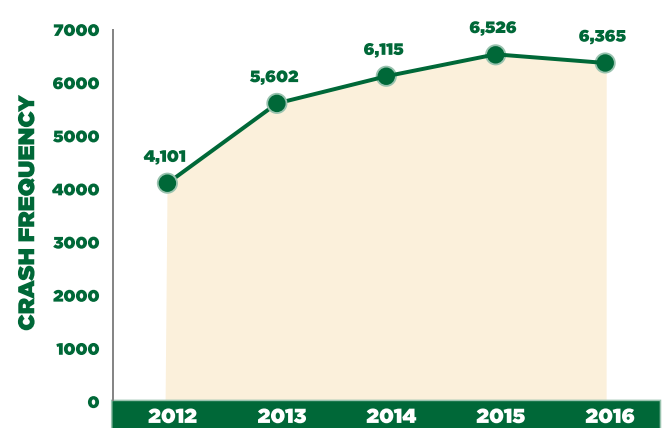


2012: 4,101
2016: 6,365



55%

INCREASE
FROM 2012-2016



IMPAIRED DRIVING CRASHES

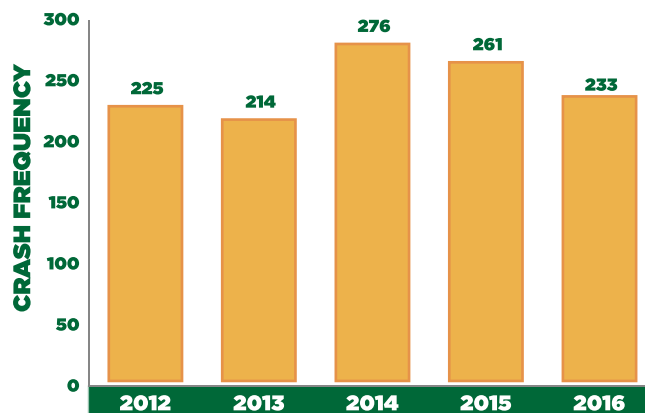


2012: 225
2016: 233



4%

INCREASE
FROM 2012-2016



DISTRACTED DRIVING CRASHES

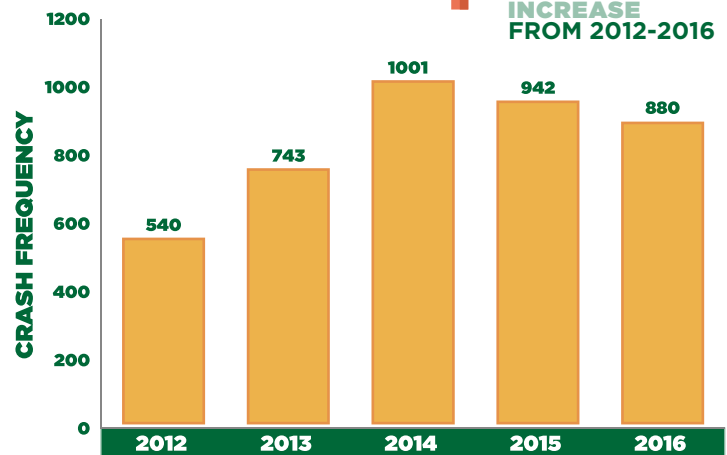


2012: 540
2016: 880



63%

INCREASE
FROM 2012-2016



HIGH CRASH INTERSECTIONS

Street 1	Street 2	Number of Crashes
Babcock Street	Palm Bay Road	79
Eau Gallie Boulevard	US 1	51
Wickham Road	Sarno Road	51
Malabar Road	San Fillippo Drive	50
Minton Road	Emerson Drive	49
Wickham Road	US 192	48
SR 520	N Courtenay Parkway	47
Babcock Street	Malabar Road	47
Lake Washington Road	Wickham Road	46
S. Patrick Drive	Eau Gallie Boulevard	43

HIGH CRASH CORRIDORS

Corridor	From	To	Number of Crashes
US 192	Wickham Road	Babcock Street	169
N Courtenay Parkway	SR 520	SR 528	165
Babcock Street	Palm Bay Road	US 192	139
SR A1A	Cocoa Isles Boulevard	SR 520	137
Babcock Street	Malabar Road	Palm Bay Road	125
Wickham Road	Sarno Road	Parkway Drive	118
US 1	SR 528	SR 405	110
US 1	Sarno Road	Pineda Causeway	106
US 1	Strawbridge Avenue	Sarno Road	104
SR A1A	SR 520	N Atlantic Avenue	100

For more information, please contact the Space Coast Transportation Planning Organization:

2725 Judge Fran Jamieson Way
Building B, Room 105, MS #82
Melbourne, FL 32940

321.690.6890
tpostaff@spacecoasttpo.com
www.spacecoasttpo.com



VIEW THE COMPLETE REPORT ONLINE AT WWW.SPACECOASTTPO.COM