



2016 STATE OF THE SYSTEM



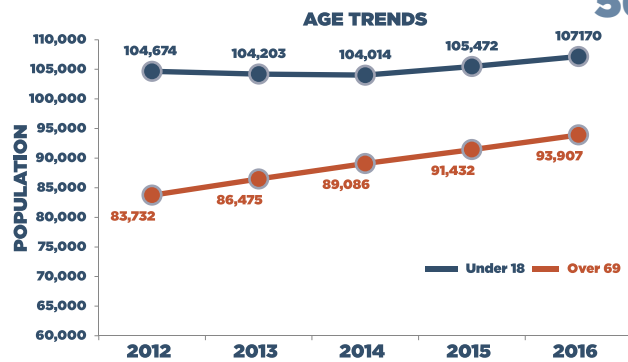
ABOUT

The Space Coast Transportation Planning Organization (TPO) annually evaluates the state of Brevard's transportation system. The results are summarized in the State of the System (SOS) report. The SOS considers usage and performance trends of various transportation modes -- highways, transit, seaport, airport and space. Safety, mobility and congestion levels are monitored. Long term trends and possible problem locations are identified. Thus, the SOS provides technical guidance to the TPO on where and how state and federal dollars can be programmed to enhance Brevard's transportation system.

POPULATION OVERALL GROWTH

4.1% INCREASE

2012: 545,625
2016: 568,919



TRAFFIC VOLUMES



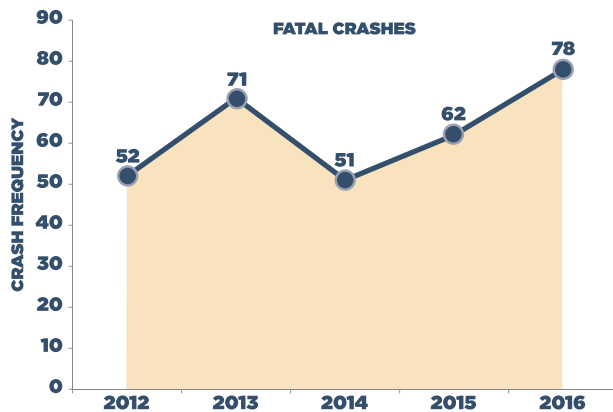
6.2% INCREASE
FROM 2012-2016

CRASH TRENDS

FATAL CRASHES



20.5% INCREASE
FROM 2015-2016



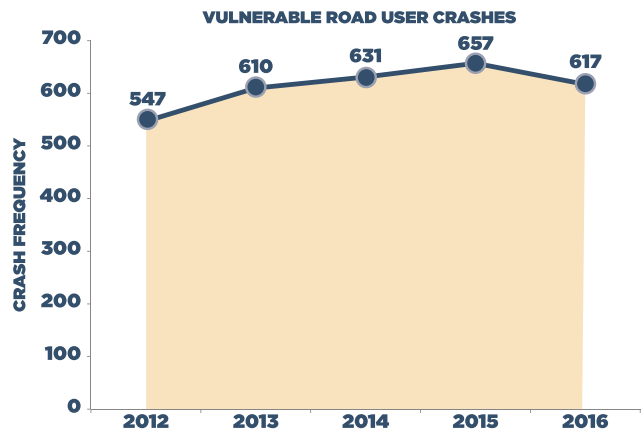
VULNERABLE ROAD USERS



PEDESTRIAN BICYCLE MOTORCYCLE



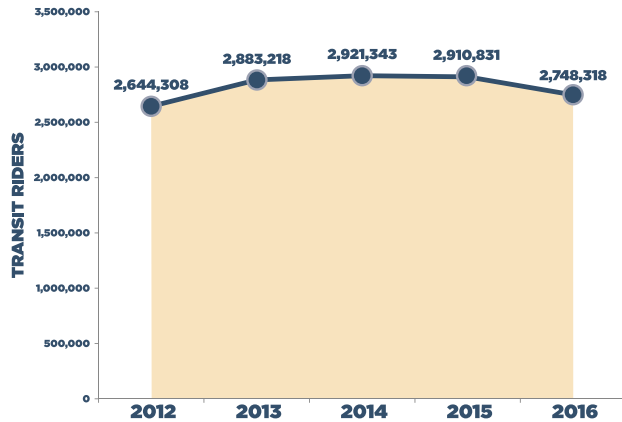
6.5% DECREASE
FROM 2015-2016



SPACE COAST AREA TRANSIT RIDERS PER YEAR



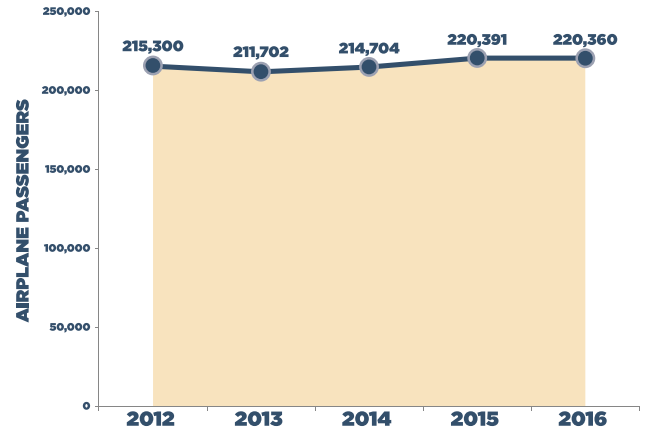
2012: 2,644,308
2016: 2,745,318 **3.9% INCREASE**



ORLANDO MELBOURNE INTERNATIONAL AIRPORT PASSENGERS



2012: 215,300
2016: 220,360 **2.4% INCREASE**



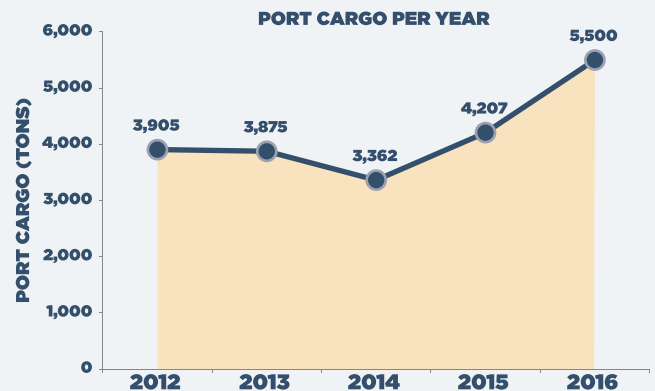
CRUISE PASSENGERS (MILLIONS)

2012: 3.8
2016: 4.2 **11.8% INCREASE**

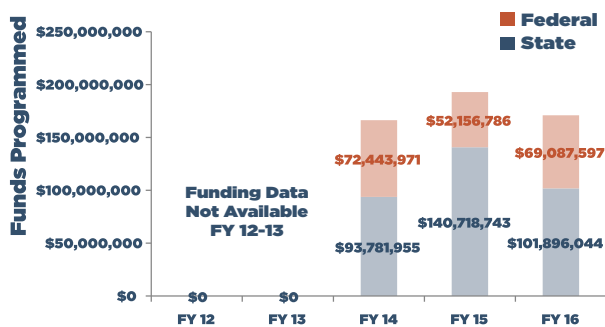


PORT CARGO (TONS)

2012: 3,905
2016: 5,500 **40.8% INCREASE**



FEDERAL AND STATE FUNDS PROGRAMMED



SPACE MISSIONS PER YEAR



2012: 10
2016: 18
2021: 56

460% INCREASE ANTICIPATED

For more information, please contact the Space Coast Transportation Planning Organization:

2725 Judge Fran Jamieson Way
Building B, Room 105, MS #82
Melbourne, FL 32940

321.690.6890
tpostaff@spacecoasttpo.com
www.spacecoasttpo.com



VIEW THE COMPLETE REPORT ONLINE AT WWW.SPACECOASTTPO.COM